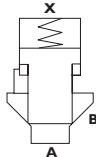
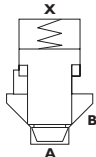


High Flow Cartridge Valves – 2/2 Way
Series NG16 – NG100



Table of Contents

Designation	Symbol	Page
General Description and Operating Principle		3
Sectional View Types of Cones and Sleeves		4
Specifications and Characteristic Parameters		5
Typical Characteristic Curves		6
2-way Cartridge for Direction and Flow Control without Damping Cone S		7
2-way Cartridge for Direction and Flow Control with Damping Cone T		8
Mounting Dimensions		9
Ordering Information/Spare Parts		10-11

This catalogue is for users with technical knowledge. To ensure that all necessary characteristics for function and safety of the system are given, the user has to check the suitability of the products described herein. In case of doubt please contact Moog Hydrolux.

General Description and Operating Principle

General Description

Cartridge valves, also known as 2/2-way valves or logic valves, conform to DIN 24342 and ISO 7368 standards. They have two operational ports A and B. The flow path between these two connections is controlled hydraulically by a pilot pressure applied to X.

Depending on the control input, cartridge valves can be used as:

- > Directional Control Valves
(start, stop, directional control)
- > Flow Control Valves

The preferred mode of mounting is the manifold block, which can be equipped with several valves depending on the hydraulic circuit for the specific application. Each valve is connected to each other in the manifold block.

The Moog Hydrolux product line contains valves of nominal bores 16, 25, 32, 40, 50, 63, 80 and 100 as per DIN 24342,

for flows up to 12,000 lpm. Moreover, Moog Hydrolux offers cover plates and pilot valves for a wide variety of functions.

In addition to this, our product offering also contains cartridge housings for a great number of applications for subplate, pipe and flange mounting.

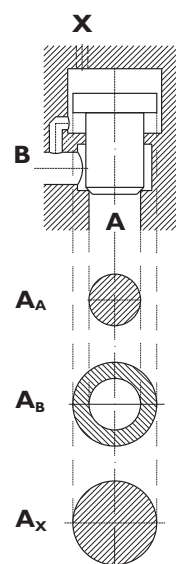
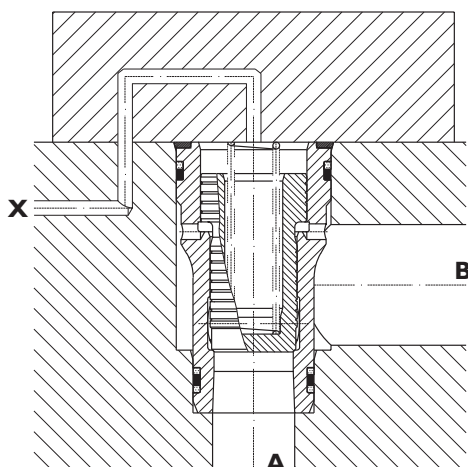
Operating Principle

Cartridge valves have two working connections A and B, where the main flow is hydraulically operated by a controlling pressure applied to the connection X. The basic cartridge valve includes a valve poppet and sleeve which is normally held in the closed position by a spring. The poppet valve has a seated cone, giving a leakage free (dependent upon pilot control) condition across the two ports. The closing spring is retained by the control cover which encloses the cartridge valve and provides pilot connections from the X port. Various types of pilot control can be mounted either to the control cover or to an adjacent manifold face to provide direct control of the cartridge valve.

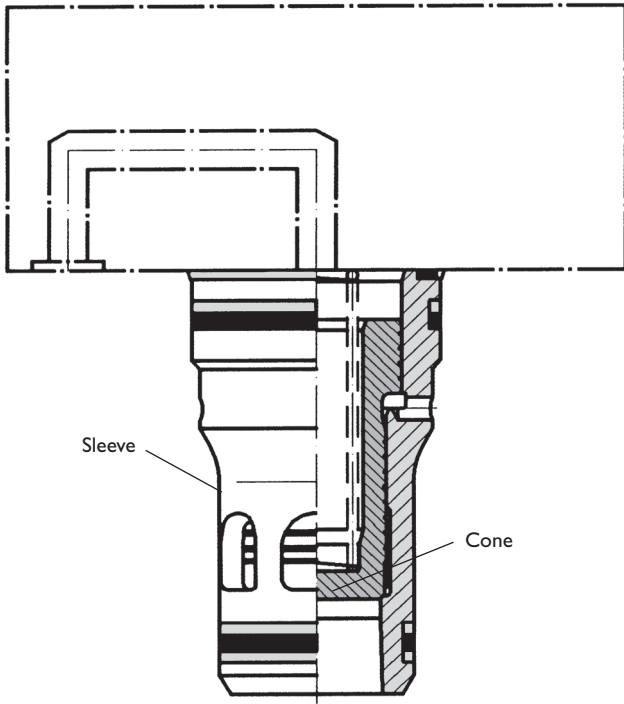
The effective areas of the basic element are A_A , A_B and A_X . Pilot oil can be taken from port A, B or both A and B (with a shuttle valve) or an external source. Hydraulic fluid can flow through the 2-way cartridge valve from A→B or B→A.

A pilot valve can be used to directly control the switching function of the cartridge valve, either between two extreme positions, open or closed, or in any number of intermediate positions. The exact position of the valve cone depends on the ratio of control surface A_X , to the pressures acting from the working connections A and B on the seating surface of A_A and the annular area of A_B .

If the valve cone is open, by reducing the pressure seen at X, then flow can move from A and B or vice-versa. By applying a control pressure at X, the working connections A to B are shut off as the valve cone is closed by the seat mounting. If there is a pressure difference between connection B and pilot connection X, as a result of clearance tolerance between the cone and sleeve, then leakage can be eliminated by using a leakproof seat valve and hooking up the pilot connection X to the working connection B. If the desired function does not permit such a switching operation, a cartridge valve with an additional sealing surface can be used to seal the connections A, B and X from each other.



Sectional View

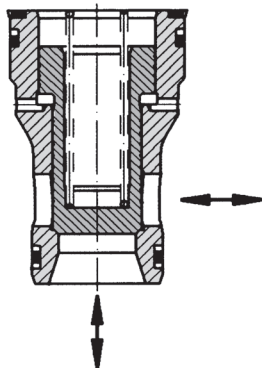


High Flow Cartridge Valve Advantages

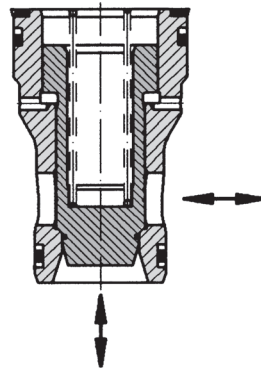
- 40% to 50% more flow with the same size of the DIN 24342 cartridge, relative to standard cartridge valves
- In many applications, the DIN 24342 cartridge can be reduced one size
- Fully interchangeable with DIN 24342 cavity; no manifold redesign required

Types of Cones and Sleeves

Directional Control and Flow Control Valves



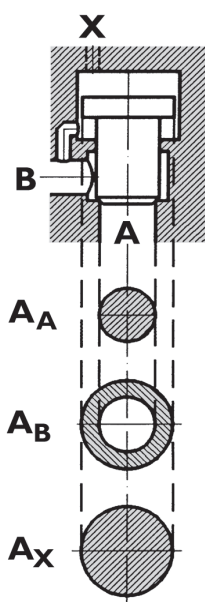
Sleeve-B, Cone-S



Sleeve-B, Cone-T

General Data	Value	Unit	Specifications
Mode of Construction	-	-	2-Way Cartridge seat valve (High Flow Cartridge)
Manner of Mounting	-	-	Manifold Cartridge Mounting
Mounting Dimensions	-	mm	see page 9
Mounting Position	-	-	any
Flow Direction	-	-	A <=> B
Ambient Temperature Range	min.	°C	-25
	max.	°C	+60
Working Pressure			
A-Port	min.	bar	0
	max.	bar	350
B-Port	min.	bar	0
	max.	bar	350
Temperature Range	min.	°C	-25
	max.	°C	+80
Viscosity Range	min.	mm ² · s ⁻¹	2,8
	max.	mm ² · s ⁻¹	380
Operational Viscosity	v	mm ² · s ⁻¹	35
Nominal Size	-	-	NG16 NG25 NG32 NG40 NG50 NG63 NG80 NG100
Weight	m	kg	0,2 0,4 0,9 1,8 3,2 6,9 12 24
Pilot Volume (Area A _X)			
S-Cone	V _X	cm ³	2,5 7,8 18,2 35,5 70,6 151,3 289,9 585
T-Cone			2,85 8,6 19,8 37,8 74 157,6 304,2 585

Characteristic Parameters



Reference Surface – A _A								
	NG16	NG25	NG32	NG40	NG50	NG63	NG80	NG100
Cone S								
Stroke (mm)	6.5	10	12	15	20	24	30.5	39
A _A (mm ²)	211	434	707	1075	2206	3318	5281	8825
A _A								
A _B	0.8	0.8	1.15	1.2	0.6	0.9	0.8	0.7
A _X	1.8	1.8	2.15	2.2	1.6	1.9	1.8	1.7
Cone T								
Stroke (mm)	7.5	11	13	16	21	25	32	39
A _A (mm ²)	211	434	707	1075	2206	3318	5281	8825
A _A								
A _B	0.8	0.8	1.15	1.2	0.6	0.9	0.8	0.7
A _X	1.8	1.8	2.15	2.2	1.6	1.9	1.8	1.7

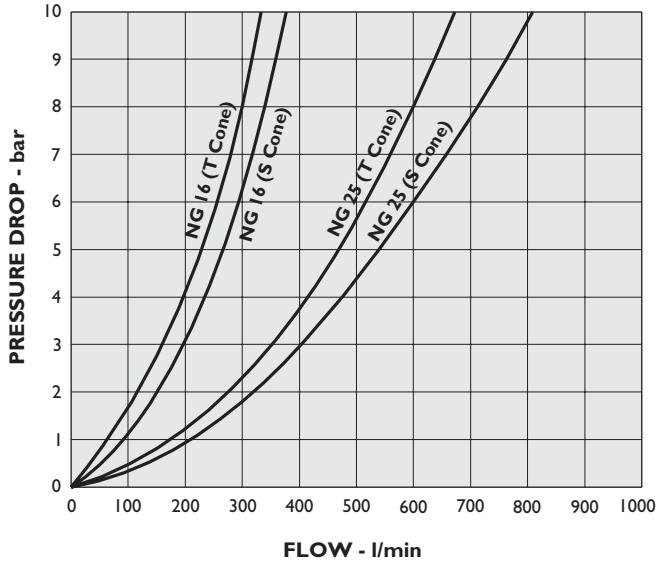
Typical Characteristic Curves

Flow and Direction Functions (S & T Cones)

NG16/NG25

Δp -Q-Curves

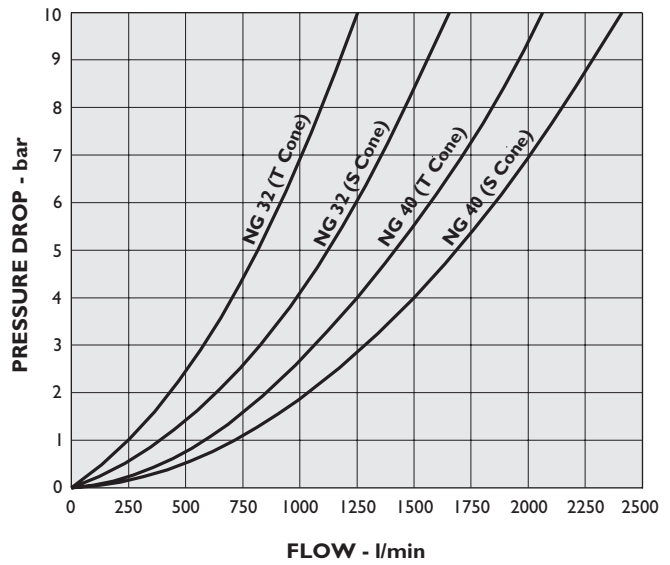
Flow direction: A \leftrightarrow B



NG32/NG40

Δp -Q-Curves

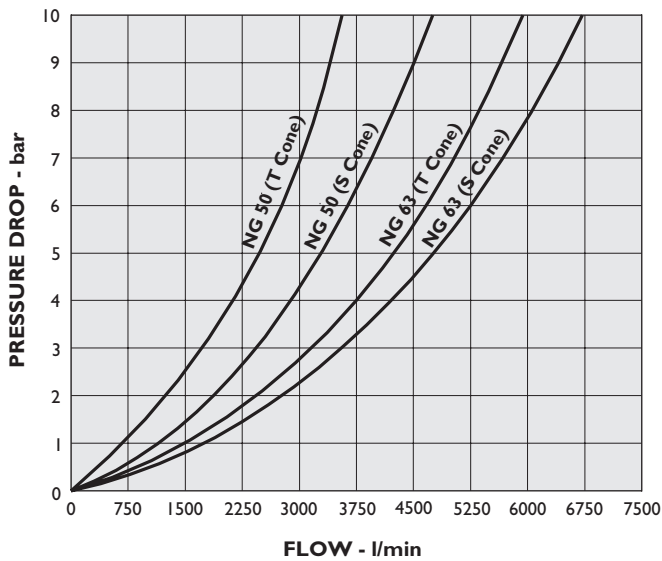
Flow direction: A \leftrightarrow B



NG50/NG63

Δp -Q-Curves

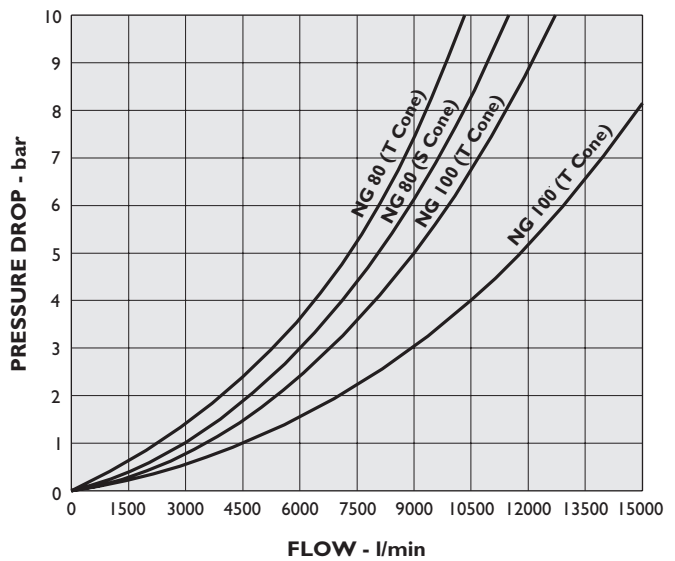
Flow direction: A \leftrightarrow B



NG80/NG100

Δp -Q-Curves

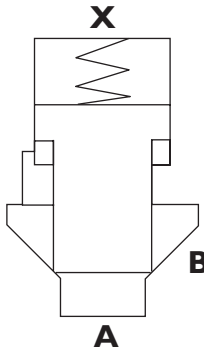
Flow direction: A \leftrightarrow B



Notes:

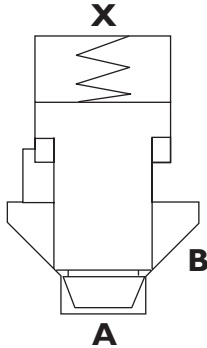
1. Performance characteristics are based on oil viscosity of 32 cSt.
2. Oil temperature – 40°C.
3. Pressure drop vs. flow data measured without spring.

Direction Control (without dampening nose); area ratio = (please refer to page 5 for ratios)

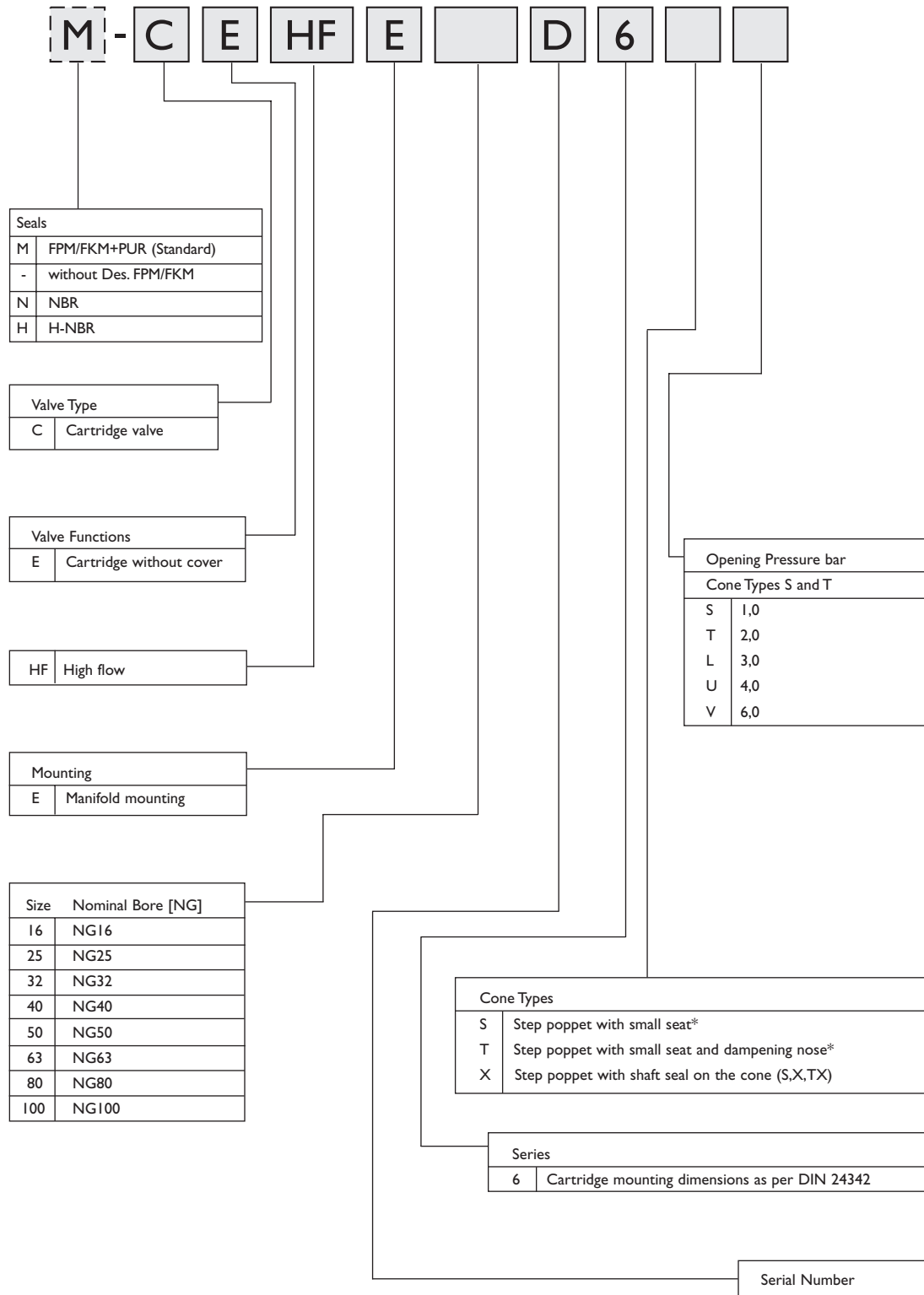
Symbol	Size NG [mm]	Weight kg	Spring Rating bar	Box Car Designation	Part Number
	16	0,2	1,0	M-CEHFE16D6SS	XCBI1056-000-00
			2,0	M-CEHFE16D6ST	XCBI1057-000-00
			4,0	M-CEHFE16D6SU	XCBI1058-000-00
			6,0	M-CEHFE25D6SV	XCBI1059-000-00
	25	0,4	1,0	M-CEHFE25D6SS	XCBI1066-000-00
			2,0	M-CEHFE25D6ST	XCBI1067-000-00
			4,0	M-CEHFE25D6SU	XCBI1068-000-00
			6,0	M-CEHFE25D6SV	XCBI1069-000-00
	32	0,9	1,0	M-CEHFE32D6SS	XCBI1016-000-00
			2,0	M-CEHFE32D6ST	XCBI1017-000-00
			4,0	M-CEHFE32D6SU	XCBI1019-000-00
	40	1,8	1,0	M-CEHFE40D6SS	XCBI1071-000-00
			2,0	M-CEHFE40D6ST	XCBI1072-000-00
			4,0	M-CEHFE40D6SU	XCBI1108-000-00
	50	3,2	1,0	M-CEHFE50D6SS	XCBI1123-000-00
			2,0	M-CEHFE50D6ST	XCBI1124-000-00
			4,0	M-CEHFE50D6SU	XCBI1125-000-00
	63	6,9	1,0	M-CEHFE63D6SS	XCBI1135-000-00
			2,0	M-CEHFE63D6ST	XCBI1136-000-00
			4,0	M-CEHFE63D6SU	XCBI1138-000-00
	80	12,0	1,0	M-CEHFE80D6SS	XCBI1205-000-00
			2,0	M-CEHFE80D6ST	XCBI1206-000-00
			4,0	M-CEHFE80D6SU	XCBI1208-000-00
	100	24,0	1,0	M-CEHFE100D6SS	XCBI1219-000-00
			2,0	M-CEHFE100D6ST	XCBI1220-000-00
			3,0	M-CEHFE100D6SL	XCBI1221-000-00

Standard Models

Direction Control (with dampening nose); area ratio = (please refer to page 5 for ratios)

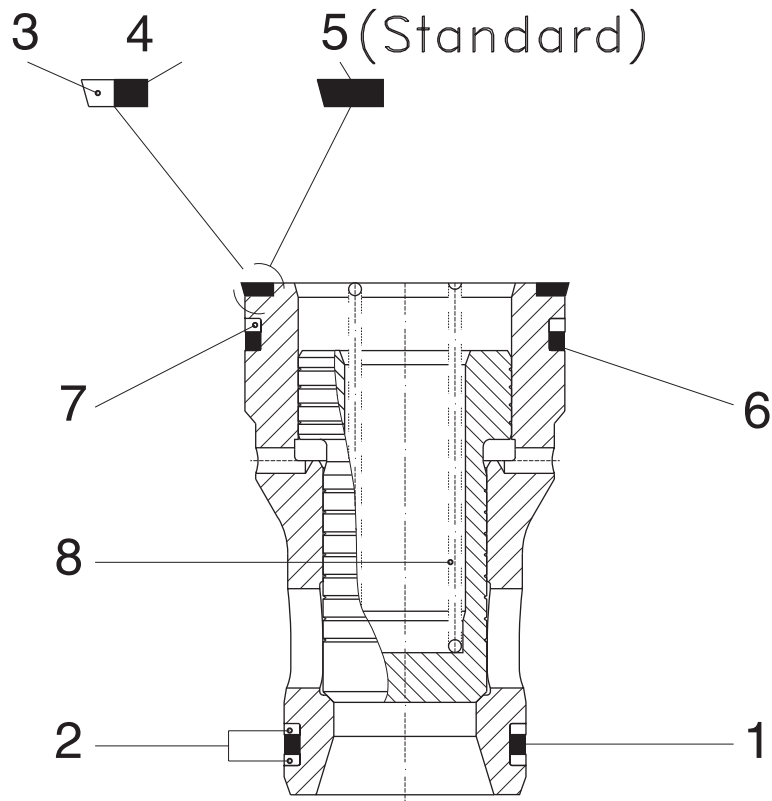
Symbol	Size NG [mm]	Weight kg	Spring Rating bar	Box Car Designation	Part Number
 <p>The diagram shows a cross-section of a solenoid valve. Label 'X' points to the spring mechanism at the top. Label 'A' points to the valve seat at the bottom. Label 'B' points to the side ports of the valve body.</p>	16	0,2	1,0	M-CEHFE16D6TS	XCB11188-000-00
			2,0	M-CEHFE16D6TT	XCB11189-000-00
			4,0	M-CEHFE16D6TU	XCB11190-000-00
			6,0	M-CEHFE25D6TV	XCB11191-000-00
	25	0,4	1,0	M-CEHFE25D6TS	XCB11183-000-00
			2,0	M-CEHFE25D6TT	XCB11184-000-00
			4,0	M-CEHFE25D6TU	XCB11185-000-00
			6,0	M-CEHFE25D6TV	XCB11186-000-00
	32	0,9	1,0	M-CEHFE32D6TS	XCB11149-000-00
			2,0	M-CEHFE32D6TT	XCB11150-000-00
			4,0	M-CEHFE32D6TU	XCB11151-000-00
	40	1,8	1,0	M-CEHFE40D6TS	XCB11118-000-00
			2,0	M-CEHFE40D6TT	XCB11119-000-00
			4,0	M-CEHFE40D6TU	XCB11217-000-00
	50	3,2	1,0	M-CEHFE50D6TS	XCB11099-000-00
			2,0	M-CEHFE50D6TT	XCB11100-000-00
			4,0	M-CEHFE50D6TU	XCB11101-000-00
	63	6,9	1,0	M-CEHFE63D6TS	XCB11141-000-00
			2,0	M-CEHFE63D6TT	XCB11142-000-00
			4,0	M-CEHFE63D6TU	XCB11144-000-00
	80	12,0	1,0	M-CEHFE80D6TS	XCB11211-000-00
			2,0	M-CEHFE80D6TT	XCB11212-000-00
			4,0	M-CEHFE80D6TU	XCB11214-000-00
	100	24,0	1,0	M-CEHFE100D6TS	XCB11224-000-00
			2,0	M-CEHFE100D6TT	XCB11225-000-00
			3,0	M-CEHFE100D6TL	XCB11226-000-00

Ordering Information



* Surfaces see Surface Area Ratios page 5.

Subject to technical changes.



Pos.	Description	Order Number								
			NG16	NG25	NG32	NG40	NG50	NG63	NG80	NG100
1	O-Ring Viton	X980-	02020	02122	02222	02225	02229	02338	02344	02427
2	Back-Up Ring	X780-	08020	18122	18222	18225	18229	18338	18344	18427
3	Axial Back-Up Ring	X783-	00018	00019	-*	00011	00012	00013	00014	00015
4	O-Ring Viton	X980-	02024	02129	-*	02231	02338	02347	02430	02439
5	Axial Seal (Standard PU)	C97	246-001	-		855-001				
5	Axial Seal (Standard PU)	CA	-	23029-001	23030-001		23032-001	23036-001	23037-001	23038-001
6	O-Ring Viton	X980-	02024	02129	02227	02231	02338	02347	02430	02439
7	Back-Up Ring	X780-	18024	18129	08227	18231	18338	08348	08431	18439
	Seal Kit (Pos. 1,2,5,6,7)	XEB	14413	14414	14373	14415	14420	14421	14422	14423
	Spring									
8	Spring S - 1,0 bar	XEf	10299	10286	10138	10292	10306	10045	10051	10059
8	Spring T - 2,0 bar	XEf	10300	10287	10140	10293	10307	10310	10323	10326
8	Spring L - 3,0 bar ⁽¹⁾	XEf	-	10297	10170	10294	10306 10308**	10172	10324	10326 10327**
8	Spring U - 4,0 bar ⁽²⁾	XEf	10301	10288	10171	10293 10295**	10307 10308**	10310 10311**	10323 10325**	-
8	Spring V - 6,0 bar ⁽²⁾	XEf	10302	10289	10171 10322**	-	-	-	-	-
	⁽¹⁾ with inner spring - 1,0 bar	XEf	-	-	-	-	-	-	-	10327
	⁽²⁾ with inner spring - 2,0 bar	XEf	-	-	10322	10295	10308	10311	10325	-

* not yet available

** not possible with stroke limiter 1H in the cover

Order example: O-Ring Viton Pos.6 NG32 => Order Number: X980-02227



Australia
Brazil
China

Denmark
England
Finland
France



Germany
India
Ireland
Italy

Japan
Korea
Luxembourg
Philippines
Singapore
Spain
Sweden
USA

MOOG
HYDROLUX

MOOG HYDROLUX S.à r.l.
1, rue de l'Acérie
L-1112 LUXEMBOURG
Tel: (+352) 40 46 40-1
Fax: (+352) 40 46 40-909
E-mail: administration@moog.lu