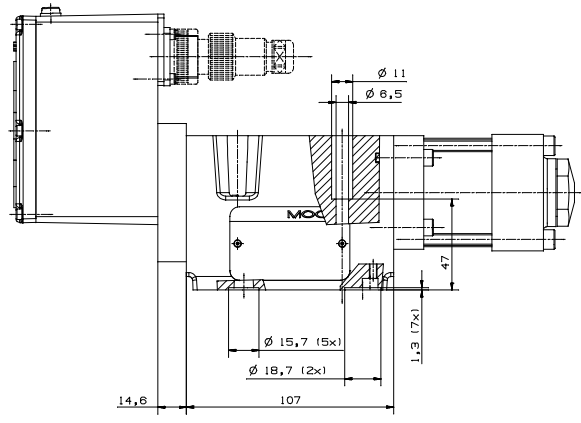
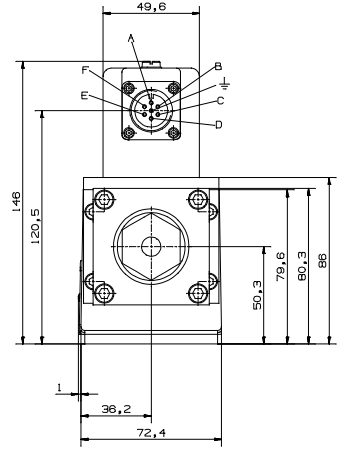


TECHNICAL DATA

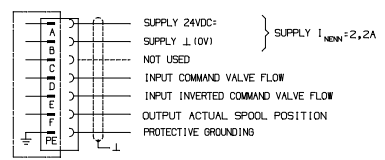
1. OPERATING PRESSURE
 MAIN STAGE MAX 350 BAR
 MAX. RETURN PRESSURE IN "T" PORT T WITHOUT USE OF PORT Y 50 BAR
2. OPERATING FLUID
 VISCOSITY RECOMMENDED MINERAL OIL BASED HYDRAULIC FLUID (DIN 51524, PART 1 TO 3) 15 TO 45 MM²/S
3. FILTER RATING
 FOR NORMAL OPERATION $\beta_{10} > 75$ (10µm ABSOLUTE)
 FOR LONGER LIFE $\beta_{10} > 75$ (1µm ABSOLUTE)
 RECOMMENDED CLEANLINESS CLASS FOR NORMAL OPERATION ISO 4408 <15/12 (NAS28/7)
 FOR LONGER LIFE ISO 4406 <14/11 (NAS28/5)
4. TEMPERATURE RANGE
 AMBIENT FLUID -20° C TO +80° C
 -20° C TO +80° C
5. SEAL MATERIAL NBR (OTHERS ON REQUEST)
6. O-RINGS MOOG P/N XXXXX-011 (ø15,8x1,78) (2x)
 MOOG P/N XXXXX-004 (ø12,42x1,78) (5x)
7. MOUNTING SURFACE FLAT WITHIN 0,02MM
 RA BETTER THAN 08µm
8. MOUNTING BOLTS REQUIRED TORQUE 13 Nm
9. RATED FLOW 60/100 L/MIN
 AT ΔP V = 70 BAR PER LAND
10. RATED SPOOL STROKE ± 1,0 MM
11. RATED SIGNAL ± 10VDC ± 10mA ± 4...20mA
12. HYDRAULIC POSITIVE DIRECTION FLOW P → A (IC2)
13. DEGREE OF PROTECTION IP 65
14. MATING CONNECTOR MOOG P/N B97007-081 DIN 43563
15. PORT Y REQUIRED IF PRESSURE P12 50 BAR IN PORT T
16. WEIGHT CA 6300 g

GENERAL REQUIREMENTS

ALL SIGNAL LINES, ALSO THOSE OF EXTERNAL TRANSDUCERS, SHIELDED, SHIELD CONNECTED RADIALLY TO L10V1, POWER SUPPLY SIDE, AND CONNECTED TO THE MATING CONNECTOR HOUSING (EMC).
 EMC1 MEETS THE REQUIREMENTS OF EN5011/03-91 CLASS B, EN50081-1/01-92 AND EN50082-2/03-95,
 PERFORMANCE CRITERION CLASS A. PROTECTIVE GROUNDING LEAD > 0,75 mm²
 NOTE: WHEN MAKING ELECTRICAL CONNECTIONS TO THE VALVE (SHIELD, PROTECTIVE GROUNDING) APPROPRIATE MEASURES MUST BE TAKEN TO ENSURE THAT LOCALLY DIFFERENT EARTH POTENTIALS DO NOT RESULT IN EXCESSIVE GROUND CURRENTS. SEE ALSO MOOG APPLICATION NOTE IM653 E.



CONNECTOR WIRING (6/8-PE TO DIN 43563)



Rev.	Description	Qty	Part-No.	Mat./ Rough dim/ Info
1	Change EXON 11272			BLAS (MAX)
2	Change EXN 1214			SLUM (SIC)
3	Change EXN 1280			SLUM (SIC)

Date	Name	Date	Name	Description
1999	SK1	98	0001	
2000	SK1	99	0001	
2001	SK1	99	0001	

Scale: 1:1
 Sheet: 2/2
MOOG
 8801 Ingersoll Drive, Lincoln, NE 68504, USA
 This is a CAD drawing and must not be edited by hand.

Installation Drawing
 DIRECT DRIVE VALVE
 D634...
 Drawing No.: C21503