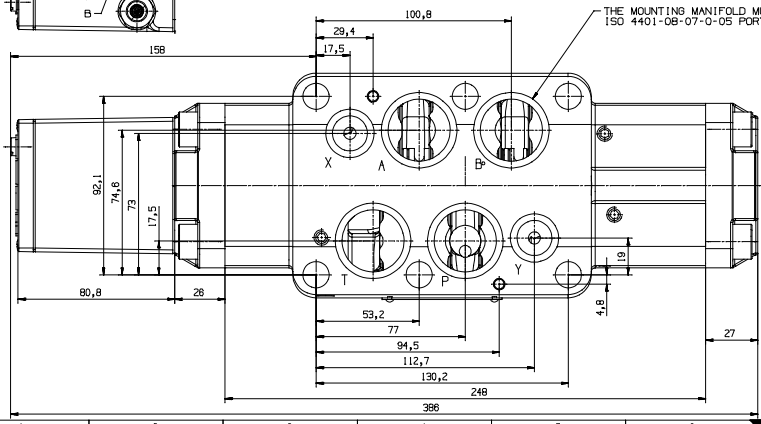
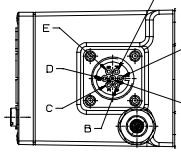
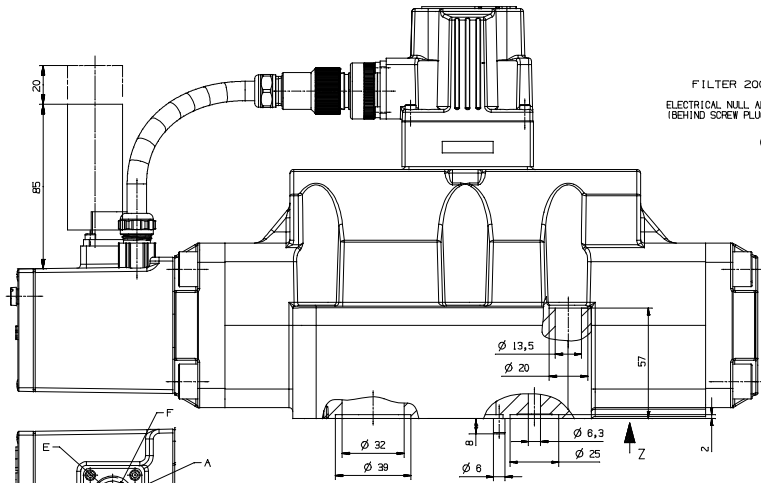


CONVERSION INSTRUCTION

PILOT FLOW SUPPLY	SET SCREW ① NPTF 1/16	PILOT FLOW RETURN	SET SCREW ② M 6 CONICAL
INTERNAL P	OPEN	INTERNAL T*	OPEN
EXTERNAL X	CLOSED	EXTERNAL	CLOSED



TECHNICAL DATA

OPERATING PRESSURE
 MAIN STAGE PORT P, A, B MAX 350 BAR
 PORT T 210 BAR (Y EXTERNAL 350 BAR)
 PILOT VALVE D081-8 15 TO 250 BAR ; WITH DROPPING ORIFICE MAX 350 BAR

OPERATING FLUID
 RECOMMENDED CLEANLINESS CLASS MINERAL OIL BASED HYDRAULIC FLUID (DIN 51524, PART 1 TO 3)
 VISCOSITY RECOMMENDED 15 TO 45 MM²/S
 ALLOWABLE 5 TO 400 MM²/S

TEMPERATURE RANGE
 AMBIENT -20° C TO +80° C
 FLUID -20° C TO +80° C

SEAL MATERIAL NBR (OTHERS ON REQUEST)

MOUNTING SURFACE
 ROUGHNESS MOOG P/N XXXXX-113 (1034,8 x ø2,8) (4x)
 MOOG P/N XXXXX-135 (1020,23xø2,8) (2x)
 FLATNESS 0,01MM OVER A DISTANCE OF 100MM
 RA BETTER THAN 0,8µm

MOUNTING BOLTS
 REQUIRED TORQUE M12x75 EN ISO 4762-10.9 (NOT INCLUDED IN DELIVERY)

RATED FLOW 94 Nm D083 550L/MIN AT ΔP V = 5 BAR PER LAND
 350L/MIN D084 550L/MIN AT ΔP V = 5 BAR PER LAND

MAIN SPOOL STROKE 1,6 MM ± 0,1 MM
 STROKE LIMIT ± 5 MM
 DEGREE OF PROTECTION EN5029 ; IP65 (WITH MATING CONNECTOR MOUNTED)
 SPOOL POSITION SEE TABLE

GENERAL REQUIREMENTS

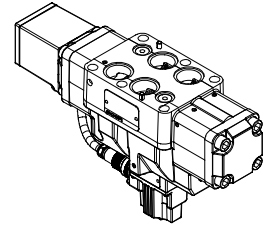
C41088

CONNECTOR S = 8-PE

SIGNAL TYPE Z.B. A = ±10V INPUT ±10V OUTPUT

SUPPLY VOLTAGE VALVE ELECTRONIC 015 = ±15V
 024 = 24V

FAILSAFE FUNCTION OF VALVE ELECTRONIC
 SEE CATALOGUE OR DATA SHEET AM350
 z.B. 0 = NO ENABLE INPUT



TYPE DESIGNATION

C21874

HYDRAULIC SCHEMATIC DWG-NO B90747

MAIN SPOOL TYPE

TYPE DESIGNATION	SYSTEM PRESSURE	PILOT PRESSURE AT INTERNAL PORT	SPOOL POSITION	VALVE ELECTRONICS
O	≥15 BAR	≥15 BAR	UNDEFINED	
F	≥15 BAR	≥15 BAR	P → B, A → T	ON OR OFF RETURN BY KEY RELEASE
D	>15 BAR	< 1 BAR	P → B, A → T	ON OR OFF RETURN BY KEY RELEASE
M	≥15 BAR	≥15 BAR	P → A, B → T	ON OR OFF RETURN BY KEY RELEASE
R	≥15 BAR	< 1 BAR	P → A, B → T	ON OR OFF RETURN BY KEY RELEASE
L	≥15 BAR	< 1 BAR	SPOOL POSITION "N"	
	≥15 BAR	< 1 BAR	SPOOL POSITION "Y"	
	>15 BAR	< 1 BAR	P → B, A → T	
	>15 BAR	< 1 BAR	P → A, B → T	

No.	Description	Qty.	Part-No.	Material / Group	Dimension / Unit
1	MOOG Valve	1	C21874	Steel	Ø 100 x 150 x 150
2	MOOG Connector	1	C41088	PE	Ø 100 x 150 x 150

MOOG
 886366 Germany
 C21874