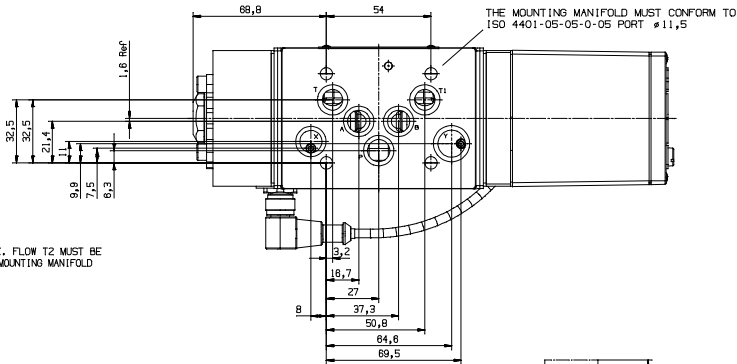


TYPE DESIGNATION
CA35965

HYDRAULIC SCHEMATIC
DWG-NO B90747

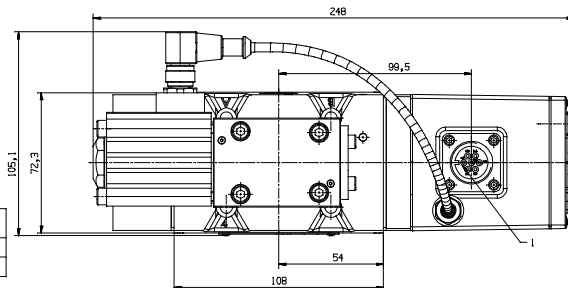
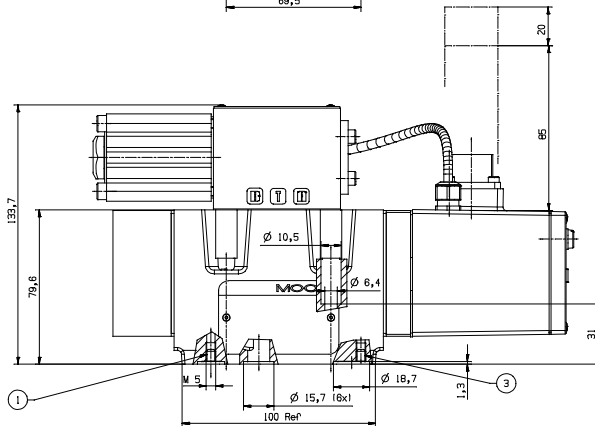
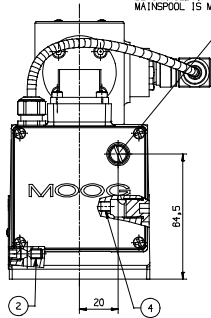
MAIN SPOOL TYPE



FOR MAX. FLOW T2 MUST BE
IN THE MOUNTING MANIFOLD

ELECTRICAL NULL ADJUST
(BEHIND SCREW PLUG)

WARNING!
THE ELECTRICAL NULL ADJUST MUST NOT
BE CHANGED IF THE POSITION OF THE
MANIFOLD IS MONITORED



TECHNICAL DATA

OPERATING PRESSURE
MAIN STAGE MAX 350 BAR
10 TO 280 BAR WITH DROPPING ORIFICE MAX 350 BAR
PILOT STAGE RETURN PRESSURE SPIES TO 210 BAR ** INTERNAL ** EXTERNAL 350 BAR/50 BAR
OPERATING FLUID MINERAL OIL BASED HYDRAULIC FLUID (DIN 51524, PART 1 TO 3)
VISCOSITY RECOMMENDED 15 TO 45 MM²/S ALLOWABLE 5 TO 400 MM²/S

FILTER RATING FOR NORMAL OPERATION $P_{10} > 75$ (15µm ABSOLUTE)
FOR LONGER LIFE $P_{10} > 75$ (10µm ABSOLUTE)
RECOMMENDED CLEANLINESS CLASS FOR NORMAL OPERATION ISO 4406 <18/15/12
FOR LONGER LIFE ISO 4406 <17/14/11

TEMPERATURE RANGE AMBIENT -20° C TO +80° C
FLUID -20° C TO +80° C

SEAL MATERIAL NBR (OTHERS ON REQUEST)
O-RINGS MOOG P/N XXXXX-004 (#12,4x1,81 16x)
MOOG P/N XXXXX-011 (#15,8x1,81 11x)

MOUNTING SURFACE ROUGHNESS FLATNESS 0,01mm OVER A DISTANCE OF 100MM
RA BETTER THAN 0,8µm

MOUNTING BOLTS M 8x40 EN ISO 4762-10.9 (NOT INCLUDED IN DELIVERY)
REQUIRED TORQUE 11 Nm

RATED FLOW MAX 80 L/MIN
AT $\Delta P_V = 5$ BAR PER LAND

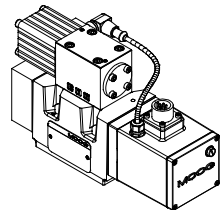
MAIN SPOOL STROKE ± 3,0 MM
STROKE LIMIT ± 3,8 MM

DEGREE OF PROTECTION EN60529: IP65 (WITH MATING CONNECTOR MOUNTED)
SPOOL POSITION SEE TABLE

GENERAL REQUIREMENTS

C41089

CONNECTOR Z.B. E = 11+PE
SIGNAL TYPE Z.B. A = ±10V INPUT ±10V OUTPUT
SUPPLY VOLTAGE VALVE ELECTRONIC O24 = 24V
FAILSAFE FUNCTION OF VALVE ELECTRONIC SEE CATALOGUE OR DATA SHEET AM350
Z.B. 0 = NO ENABLE INPUT



TYPE DESIGNATION	SYSTEM PRESSURE	PILOT PRESSURE (P1) (INTERNAL, p1)	SPOOL POSITION
F	≥18 BAR ≥15 BAR	≥15 BAR > 1 BAR	A → T

CONVERSION INSTRUCTION

PILLOT FLOW SUPPLY	SET SCREW M4x6	PILLOT FLOW RETURN	SET SCREW M4x6
INTERNAL P	① CLOSED ② OPEN	INTERNAL T	③ CLOSED ④ OPEN
EXTERNAL X	② CLOSED ① OPEN	EXTERNAL Y	④ CLOSED ③ OPEN

No.	Description	Qty.	Part-No.	Material / Group	Dimension / Info.
1	Mounting manifold	1	C41089	ALU	100 Ref
2	Connector	1	C41089	PE	11+PE
3	Valve electronic	1	O24	24V	±10V

INSTALLATION DRAWING
4-STAGE PROPORTIONAL VALVE
D681-PUP (4+PE)

MOOG
First used Drawing No: CA35965