

Description

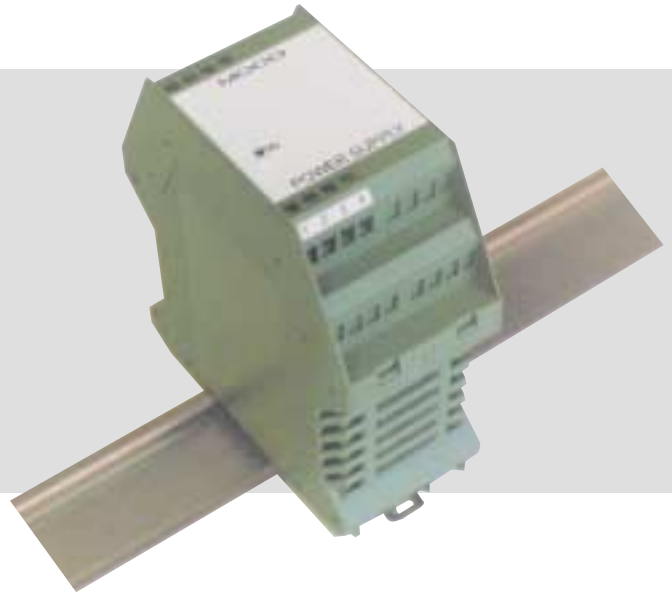
The G128-809 Power Supply provides a regulated 24VDC output from an AC or DC input supply. The G128-809 is suitable for powering devices with a combined continuous current of up to 2A.

The Power Supply uses a high reliability and efficient switching regulator design and is housed in a compact DIN rail mounting enclosure.

A 24VDC 650mA Power Supply is also available. For information refer to the data sheet G128-808.

Features

- Wide range AC or DC input.
- Regulated +24VDC low ripple output.
- Idle and short circuit protected.
- 4kV isolation from input supply.
- High efficiency, > 80%.
- High reliability, 500,000 hour MTBF.
- Parallel connectable for redundant operation.
- Compact DIN housing.
- CE marked.

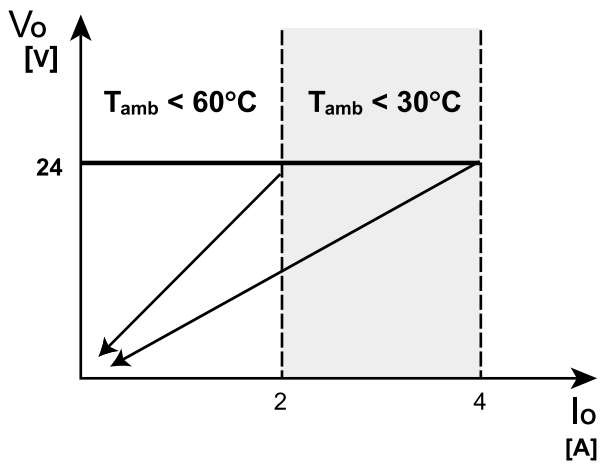
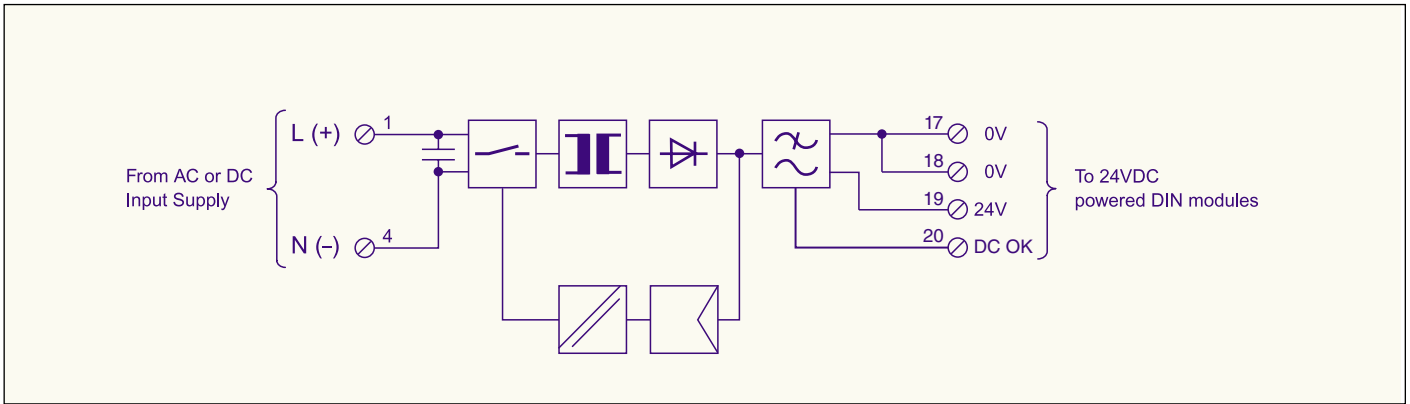


Specifications

Supply:	90 to 260VAC, 45 to 65Hz. 90 to 350VDC.
Inrush current:	< 35A for < 3mS @ 25°C.
Isolation:	4kV.
Mains buffering:	> 20mS @ 120VAC, > 100mS @ 230VAC.
Output – voltage:	24VDC fixed –0% / +3%.
– current:	4A max. @ 230VAC, $T_{amb} \leq 30^{\circ}C$. 2A max. @ all input voltages, $T_{amb} \leq 60^{\circ}C$.
Startup delay:	< 100mS.
Ripple:	100mV p-p typical at nominal load.
Load regulation:	< 1% static for 10% to 90% load change. < 3% dynamic for 10% to 90% load change.

Maximum power loss:	10W at nominal load.
Front Panel Indicator:	Vs: Green power LED.
Mounting:	DIN rail.
Protection type:	IP 20.
Temperature:	0 to +40°C.
Dimensions:	100W x 108H x 45D.
Weight:	250g.
Approvals:	CE mark: EN50081.2 emission. EN61000-6-2 immunity.

Operating Details



Ordering Information

Power Supply, 24VDC, 2A G128-809.

Internet Data

For a detailed Application Manual and the latest version of this Data Sheet please refer to the Moog website www.moog.com/dinmodules

MOOG

Industrial Controls Division. Moog Inc., East Aurora, NY 14052-0018. Telephone: 716/652-3000. Fax: 716/655-1803. Toll Free 1-800-272-MOOG.

Moog GmbH. Germany. Telephone: 07031-622-0. Fax: 07031-622-100.

Moog Sarl. France. Telephone: 01 45 60 70 00. Fax: 01 45 60 70 01.

Moog Australia Pty. Ltd. Telephone: 03 9561 6044. Fax: 03 9562 0246.

Moog pursues a policy of continuous development and reserves the right to alter designs and specifications without prior notice. Information contained herein is for guidance only and does not form part of a contract.

Australia: Melbourne, Sydney, Brisbane ■ Austria: Vienna ■ Brazil: São Paulo ■ Denmark: Birkerød ■ England: Tewkesbury ■ Finland: Espoo ■ France: Rungis ■ Germany: Böblingen, Dusseldorf ■ Hong Kong: Shatin ■ India: Bangalore
Ireland: Ringaskiddy ■ Italy: Malnate (VA) ■ Japan: Hiratsuka ■ Korea: Kwangju-Kun ■ Philippines: Baguio City ■ Singapore: Singapore ■ Sweden: Askim ■ USA: East Aurora (NY)