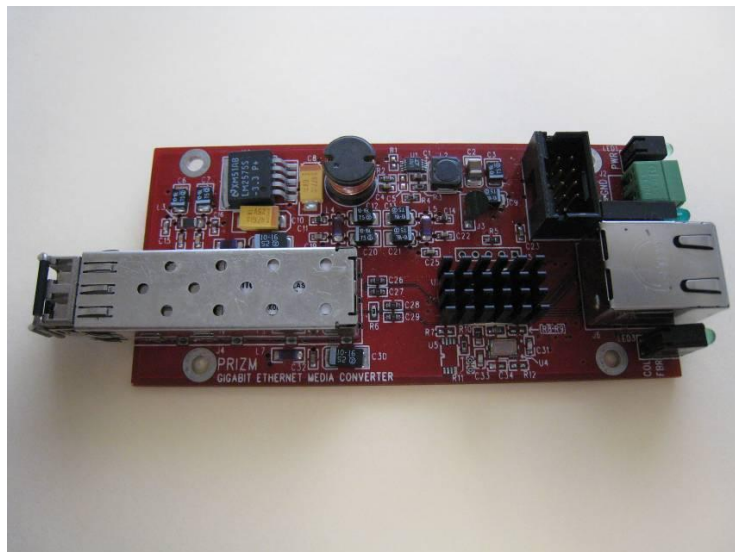




**Single Port Gigabit Ethernet
Media Converter Board
(P/N 201350-xxx)**

**User's Manual
And
Troubleshooting Guide**



August 12, 2009

Rev C

Moog Components Group
Springfield Operations
750 West Sproul Road
Springfield, PA 19064

E-Mail: mcg@moog.com URL: www.moog.com/components

Tel: 610-328-4000 Fax 610-605-6216

24/7 Technical Customer Support Hotline: 610-605-6101

MANUAL REVISION HISTORY

REVISION NUMBER	DATE	BY	REASON FOR REVISION
A	10/10/07	GSG	ORIGINAL
B	02/17/09	IB	Updated contact information to reflect Moog Components Group
C	08/12/09	GH	Corrected RJ45 pinout

TABLE OF CONTENTS

1 SINGLE PORT GIGABIT ETHERNET BOARD, P/N: 201350-XXX..... 3

1.1 SINGLE PORT GIGABIT ETHERNET BOARD REVISION HISTORY: 3

1.2 SINGLE PORT GIGABIT ETHERNET BOARD DASH (-) NUMBER DEFINITIONS 3

1.3 SINGLE PORT GIGABIT ETHERNET BOARD OPERATION: 4

1.3.1 *Gigabit Ethernet Board Indicators and Controls:*..... 4

1.3.2 *Single Port Gigabit Ethernet Board Specifications:*..... 6

1.3.3 *Gigabit Ethernet board Dimensions:*..... 6

1.3.4 *Gigabit Ethernet board Power Requirements:* 6

1.3.5 *Power Section Testing*..... 6

1.3.6 *Optical Section Testing*..... 7

1.3.7 *Ethernet Testing*..... 7

1 Single Port Gigabit Ethernet Board, P/N: 201350-xxx

The Prizm Single Port Gigabit Ethernet Media Converter board provides a fiber optic link to remote a Gigabit Ethernet. An industry standard pluggable small-form-factor (SFP) Gigabit Ethernet (GBE) fiber optic module is employed to allow easy customization of the fiber optic link characteristics. Single mode fiber is typically used with this board and optical links can easily exceed 10 kilometers. Multimode fiber can also be supported but with drastically reduced optical link distance – typically less than 1 kilometer depending on the fiber specifics.

This board has to be linked with another Gigabit Ethernet board to complete the Ethernet connection.

NOTE: The Gigabit Ethernet board will only work with Gigabit Ethernet devices. This board will not support 10 or 100 Mbps Ethernet.

The Gigabit Ethernet board will operate as either a subsea or surface interface board, so can be used as spare for either location. The optical modules used on the board are inherently bi-directional and care must be taken to ensure the correct optical port (either TX or RX) is connected, depending on the board configuration and system location. While the optical module's receiver will operate on all of the 16 CWDM (coarse wave division multiplexing) wavelengths (1270 to 1610nm), the module's transmitter only emits at a single wavelength so care must be taken to ensure the correct wavelength is used.

For non-CWDM applications, Moog Components Group can supply the board with SFP's that contain an internal bi-direction WDM (wave division multiplexers) for single-fiber operation.

1.1 Single Port Gigabit Ethernet Board Revision History:

The Gigabit Ethernet board has gone through the following printed circuit board (PCB) and Assembly revisions:

PCB Revision A/Assembly Revision A Original design

1.2 Single Port Gigabit Ethernet Board Dash (-) Number Definitions

The Gigabit Ethernet board has a Dash Number appended to the part number. This Dash Number identifies the specific board configurations:

-001A original configuration.

1.3 Single Port Gigabit Ethernet Board Operation:

The Gigabit Ethernet board has two main electrical connectors: the Ethernet RJ-45 and the 2-pin Phoenix DC power connector.

The RJ-45 connector (J6) is located at the lower right side of the board and is a standard 8-pin Ethernet connector with an integrated transformer. Depending on the ordering options, the RJ-45 connector may or may not have a pair of integrated Ethernet status LEDs. Whether or not the connector has the integrated LEDs, there is an additional 2-position LED for indicating Ethernet link status and link activity.

There is single green 2-pin Phoenix connector (J2) on the on the upper right side of the board for supplying the board with DC operating power. Pin 1 (at the lower right of the J2 connector) is the +DC input and pin 2 (at the upper right and labeled “GND”) is the ground. Depending on the ordering options for this board, various DC supply voltages can be accommodated from +5VDC to +24VDC.

The SFP optical module (J4) is located at the lower left of the board. Depending on the ordering options, the optical module may have one or two integral LC optical connectors. If there are two optical connectors then the upper left connector is the transmit (TX) optical port while the lower left connector is the receive (RX) optical port.

NOTE: On power-up of the board, both LEDs within LED3 will briefly flash on then off to indicate that the GBE chip (U3) is starting. Even if the two boards are optically connected, neither LED on LED3 will light until a valid GBE signal is present at BOTH RJ-45 connectors. Once valid GBE signals are seen at both ends of the link then the LEDs on LED3 will activate.

1.3.1 Gigabit Ethernet Board Indicators and Controls:

LEDS:

There are 3 through-hole right angle LED indicators on the top of the board. There are no LEDs on the bottom of the board.

LED	Indication
LED1 (Green)	Single LED, located at the top right of the board, labeled ‘PWR’, serves as an indicator that +VDC power is available to the board. Supply voltage range depends of ordering options.
LED2 (Green/Green)	Dual LED, located on the right center of the board, labeled ‘1.2/3.3VDC’. When ‘ON’, the upper LED provides an indication that the on-board 1.2VDC regulator is functioning. NOTE: THE UPPER LED (1.2V) DOES NOT FUNCTION ON THE REV A PCB VERSION. When ‘ON’, the lower LED provides an indication that the on-board 3.3VDC regulator is

	functioning.
LED3 (Green/Green)	<p>Dual LED, located on the right center of the board, labeled 'COL/FIBR'.</p> <p>When 'ON', the upper LED provides an indication that there is a GBE cable is attached to the RJ-45 connector and there is an Ethernet device on the cable.</p> <p>The lower LED will blink 'OFF' to indicate that there is Ethernet activity (traffic) on the cable.</p> <p>Refer to the note in Section 1.3 above.</p> <p>NOTE: THE 'COL/FIBR' LABEL IS INCORRECT ON THE REV A PCB VERSION.</p>

FUSES:

There is one fuse for this board. All fuses are the self-resetting PTC type and should require replacement by the user.

F1: 1.1 Amp PTC, DC input fuse at J2

SWITCHES:

There are no switches on this board.

TRIMPOTS:

There are no trimpots on this board.

CONNECTORS:

There are a total of 6 connectors on the board.

J1: 2x4 pin external LED header

J1	LED Header			
	+3.3VDC	1	o o	2 LINK1000
	GROUND	3	o o	4 LINK100
	FIBER MEDIA SELECT	5	o o	6 LINK10
	DUPLEX/COLLISION	7	o o	8 NO CONNECT

Note: these pins are not typically available to the user, contact Prizm

J2: 2-pin Phoenix connector for DC power entry

J2	DC Power 2-pin Phoenix Connector	
o 1		GROUND
o 2		+VDC INPUT

J3: No connector on the board

J4: SFP optical module

J5: 5-pin header for U3 programming – do not use

J6: 8-pin RJ-45 connector/transformer for Ethernet

J6	Gigabit Ethernet RJ-45 Connector	Left	o	o	o	o	o	o	o	o	o	o	Right
		Pin #	8	7	6	5	4	3	2	1			
Pin #	1000Mbps												
1	A+												
2	A-												
3	B+												
4	C+												
5	C-												
6	B-												
7	D+												
8	D-												

J7: Reset chip at this location

JUMPER POSTS:

There are no jumper posts on this board.

1.3.2 Single Port Gigabit Ethernet Board Specifications:

Number of Ethernet links: 1 per board
 Data rates supported: Gigabit Ethernet only

1.3.3 Gigabit Ethernet board Dimensions:

Printed circuit board (PCB): 1.90 inches x 4.00 inches
 (48.26mm x 101.6 mm)

1.3.4 Gigabit Ethernet board Power Requirements:

The Gigabit Ethernet board utilizes approximately 2.5 Watts of power.

- 5.0VDC input, approximately 500mA
- 10.0VDC input, approximately 250mA
- 12.5VDC input, approximately 200mA
- 20.0VDC input, approximately 125mA
- 25.0VDC input, approximately 100mA

1.3.5 Power Section Testing

NOTE: *The connectors and components on the bottom of the Gigabit Ethernet board have pins that are connected to internal supply voltages and ground. If these pins are inadvertently shorted together or to a common chassis ground, the board fuse (F1) will trip/reset.*

If both the “PWR” LED and the “1.2/3.3 VDC” LED is out:

- Check for continuity of PTC fuse F1 with an ohmmeter.
- Replace PTC fuse if open.

If only the “1.2/3.3 VDC” LED is out:

- Verify DC voltage is present at the source
- Replace the board with a spare, nothing repairable.

1.3.6 Optical Section Testing

1.3.7 Ethernet Testing

If the Ethernet link is out or has errors:

- As this board will only work with Gigabit Ethernet traffic, verify that the devices at both ends of the link are indeed Gigabit Ethernet devices.
- Verify that the Ethernet devices at both ends of the link are powered up.
- Verify that both of the dual LEDS at LED3 are lit to confirm Ethernet activity at the RJ-45 connector.
- Attempt to PING from one device to the other.
- If the channel is still not operating correctly, first check the field wiring. If the wiring appears correct, then first replace the subsea Gigabit Ethernet board with a spare and check the link again. If the problem is still there, replace the surface Gigabit Ethernet board, with a spare and check the link again.