

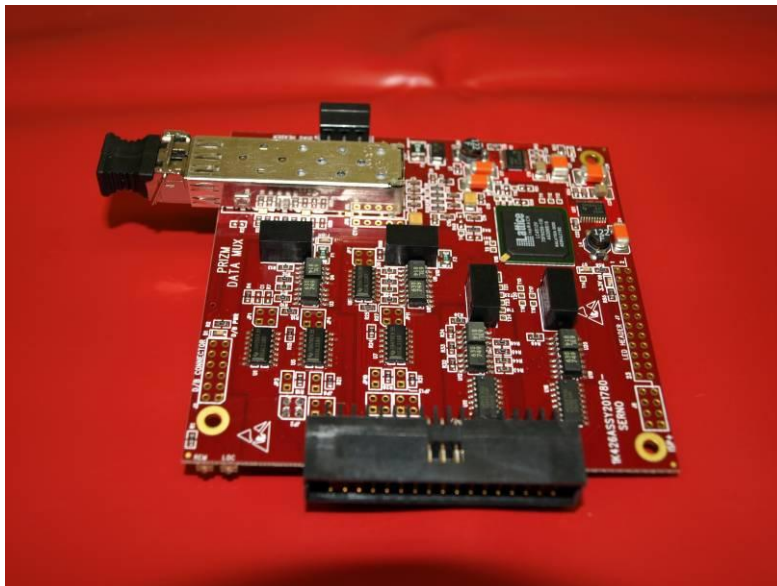


Mini4 Data Mux User's Manual

(201780-xxx)

And

Troubleshooting Guide



June 7, 2010

Rev B

Moog Components Group
750 West Sproul Road, Springfield, PA 19064

E-Mail: URL:

Tel: 610-328-4000 Fax:

TABLE OF CONTENTS

1 Mini4 Data Mux Board P/N – 201780-xxx3

2 Mini4 Revision History3

3 Mini4 Data Mux Board Dash (-) Number Definitions3

4 Mini4 Data Mux Board Operation3

 4.1 Mini4 Data Mux Board Indicator and Controls 4

 4.2 Mini4 RS-232/RS-485/RS-422 Data Operation..... 10

 4.2.1 Mini4 RS-232 Data Channel Selection and Operation 10

 4.2.2 Mini4 RS-485/RS-422 Data Channel Selection and Operation..... 10

 4.3 Mini4 Data Mux Board Specifications 10

 4.4 Mini4 Data Mux Board Dimensions 11

 4.5 Mini4 Data Mux Board Power Requirements 11

 4.6 Power Section Testing 11

 4.7 Optical Section Testing 12

 4.8 Data Section Testing 12

 4.9 Stack Mini4 System Installation Checkout Procedure 13

5 Diagnostics Overview 13

6 Communications Hardware 14

Manual Revisions:

August 7, 2008

Rev A - Preliminary manual

September 17, 2008

Rev A - corrected various sections

June 7, 2010

Rev B - corrected J6 connector pinout

1 Mini4 Data Mux Board P/N – 201780-xxx

The Mini4 Data Mux boards are typically used as a set. This board set provides for 4 channels of RS232 data and 4 channels of RS422/RS485 data. In addition, the Mini4 Data Mux boards provide for the use of one or more daughterboards for additional data channels.

NOTE: For details on a specific daughterboard, refer to the daughterboard manual. For a current list of available daughterboards, please contact the factory sales personnel.

2 Mini4 Revision History

The Mini4 Data Mux board (201780-xxx) has gone through the following printed circuit board (PCB) revisions:

<u>PCB Revision A</u>	Original design, not currently in production.
<u>PCB Revision 01</u>	Respin to correct routing.

3 Mini4 Data Mux Board Dash (-) Number Definitions

The Mini4 Data Mux boards have a Dash Number appended to the part number. This Dash Number identifies the specific board configurations:

- 01 Subsea Bottle custom version.
- 02 Surface custom version.
- 001 Standard version.

4 Mini4 Data Mux Board Operation

The Mini4 Data Mux boards include the fiber optic link interface, 4 channels of RS-232 data and 4 channels of RS-485 or RS-422 data. The boards interface to all of the on-board peripheral devices (such as the fiber optic link chips (SERDES) and the data interface chips) through a programmable logic device. The boards also provide the interface for a daughterboard connection. A block diagram of the basic Mini4 Data Mux Board I/O is shown on the following page and explained in the subsequent paragraphs.

The transmit portion (uplink from vehicle to surface) of the Mini4 Data Mux board takes in the 8 onboard serial data signals and the daughterboard data and clock signals and converts them to a single serial optical signal. The signal is transmitted to the Mini4 Data Mux board at the other end of the fiber optic link in the control/viewing area. The receive portion of the Mini4 Data Mux board accepts the optical signal, recovers the 8 serial data signals and routes them to the appropriate RS-232/RS-485/RS-422 driver chips, and recovers the daughterboard clock and data signals and routes them to the daughterboard connection. The downlink from the surface to the vehicle is identical to the uplink portion.

The Mini4 Data Mux boards require a +5VDC power source provided through the 2-pin Phoenix connector at J5. The boards have on-board 5V to 3.3V and 2.5V converters to provide power for the components that use these supply voltages.

4.1 *Mini4 Data Mux Board Indicator and Controls*

LEDS: There are 19 surface mount (SMD) LED indicators on the Mini4 Data Mux board to indicate different statuses that are covered by function below.

Top of Board

LED	Indication
D1 (Green)	Located at the top left of the board serves as an indicator that either +5V or 3.3V dc is available to the board connector, J2. Supply voltage (5V or 3.3V) to the daughter-board is selected via the placement of fuse F6 (3.3V) or F5 (5V)
D3 (Green)	Located on the top middle of the board, labeled 'FIBR', provides an indication that the transceiver module has detected the presence of an input signal on the fiber link. When 'ON' indicates that this board has a good level of received optical power from the remote unit.
D6 (Green)	Labeled '2.5V', located on the mid-right of the board. When 'ON' indicates the on-board 2.5V converter is operational
D7 (Green)	Not labeled, located on the bottom center of the board. When 'ON' indicates that 5V is available to the display LED ribbon header.
D8 (Green)	Labeled '5V', located on the lower right of the board. When 'ON' indicates +5V dc is available to the board.
D9 (Green)	Labeled '3.3V', located at bottom center of the board. When 'ON' indicates 3.3V is available on the board.

Bottom of Board

LED	Indication
D10 (Green)	Located on the upper right corner of the board, labeled "REM". 'ON' when the link is established with the remote Mini4 Data Mux board and the data stream is synchronized at the remote board's end.
D12 (Green)	Located on the upper left corner of the board, not labeled. When the RS-485 diagnostics processor has been accessed, this LED will toggle from "ON" to "OFF" with each successive access.

D13 (Green)	Located on the upper right corner of the board, labeled “LOC”. ‘ON’ when the link is established with the remote Mini4 Data Mux board and the data stream is synchronized at this board’s end.
D18 (Green)	Located on the upper left of the board, labeled “TD”. ‘ON’ when serial data is being transmitted out of the board by the RS-485 diagnostics processor.
D22 (Green)	Located on the upper left of the board. ‘ON’ when serial data is being received by the RS-485 diagnostics processor.
D24 (Red/Green)	Located on the upper right of the board. Green is ‘ON’ when serial data is being received into the board on channel 8, Red is ‘ON’ when serial data is being transmitted out of the board on channel 8.
D26 (Red/Green)	Located on the upper right of the board. Green is ‘ON’ when serial data is being received into the board on channel 7, Red is ‘ON’ when serial data is being transmitted out of the board on channel 7.
D30 (Red/Green)	Located on the upper right of the board. Green is ‘ON’ when serial data is being received into the board on channel 6, Red is ‘ON’ when serial data is being transmitted out of the board on channel 6.
D31 (Red/Green)	Located on the upper right of the board. Green is ‘ON’ when serial data is being received into the board on channel 5, Red is ‘ON’ when serial data is being transmitted out of the board on channel 5.
D32 (Red/Green)	Located on the upper right of the board. Green is ‘ON’ when serial data is being received into the board on channel 4, Red is ‘ON’ when serial data is being transmitted out of the board on channel 4.
D34 (Red/Green)	Located on the upper right of the board. Green is ‘ON’ when serial data is being received into the board on channel 3, Red is ‘ON’ when serial data is being transmitted out of the board on channel 3.
D35 (Red/Green)	Located on the upper right of the board. Green is ‘ON’ when serial data is being received into the board on channel 2, Red is ‘ON’ when serial data is being transmitted out of the board on channel 2.
D36 (Red/Green)	Located on the upper right of the board. Green is ‘ON’ when serial data is being received into the board on channel 1, Red is ‘ON’ when serial data is being transmitted out of the board on channel 1.

NOTE: the fuses are the positive temperature coefficient self-resetting type and do not require replacement

- FUSES:**
- F1, a 1.5A PTC fuse protects the isolated power supply for data channels 8 & 7.
 - F2, a 2.6A PTC fuse protects the +5VDC input to the board.
 - F3, a 1.5A PTC fuse protects the isolated power supply for data channels 6 & 5.
 - F4, a 1.5A PTC fuse protects the isolated power supply for data channels 4 & 3.
 - F5, a 1.5A PTC fuse protects and selects +5VDC for the daughterboard.
Note: this fuse is replaced with a 0 ohm resistor, typically.
 - F6, a 1.5A PTC fuse protects and selects +3.3VDC for the daughterboard.
Note: this fuse is not placed, typically.
 - F7, a 1.5A PTC fuse protects the isolated power supply for data channels 2 & 1.
 - F8, a 1.5A PTC fuse protects and selects +5VDC for the daughterboard
Note: this fuse is not placed, typically.

SWITCHES: There are no switches on the Data Mux board.

CONNECTORS: The connectors on the Data Mux board are as follows:

J2		Daughterboard Connector			
VDC Supply	1	o	o	2	VDC Supply
RXD_DB1	3	o	o	4	TXD_DB1
GND	5	o	o	6	GND
RXC_DB	7	o	o	8	TXC_DB
RCV LINK	9	o	o	10	Future
RXD_DB2	11	o	o	12	TXD_DB2

J3		Power /Diagnostics			
RT+	1	o	o	2	RT-
GND	3	o	o	4	GND
GND	5	o	o	6	GND
+5V	7	o	o	8	+5V
+5V	9	o	o	10	+5V

J5		+5DC Power entry			
-----------	--	------------------	--	--	--

J6		Serial Data			
(RS-232) R1	1	o o	2	T1 (RS-232)	
GND_ISO_A	3	o o	4	GND_ISO_A	
(RS-232) R2	5	o o	6	T2 (RS-232)	
(RS-232) R3	7	o o	8	T3 (RS-232)	
GND_ISO_B	9	o o	10	GND_ISO_B	
(RS-232) R4	11	o o	12	T4 (RS-232)	
(RS-485/422) R5+	13	o o	14	T5+ (RS-485/422)	
(RS-485/422) R5-	15	o o	16	T5- (RS-485/422)	
GND_ISO_C	17	o o	18	GND_ISO_C	
(RS-485/422) R6+	19	o o	20	T6+ (RS-485/422)	
(RS-485/422) R6-	21	o o	22	T6- (RS-485/422)	
(RS-485/422) R7+	23	o o	24	T7+ (RS-485/422)	
(RS-485/422) R7-	25	o o	26	T7- (RS-485/422)	
GND_ISO_D	27	o o	28	GND_ISO_D	
(RS-485/422) R8+	29	o o	30	T8+ (RS-485/422)	
(RS-485/422) R8-	31	o o	32	T8- (RS-485/422)	
No Connect	33	o o	34	No Connect	

**NOTE: J6 header is located at the center left side of the board.
Pin 1 is the bottom right pin – as identified by a square pad.**

J6 – Board header: Amp/Tyco 1-103167-4

Mating ribbon connector: Amp/Tyco 3414-6000

Mating crimp connector: Amp/Tyco 3-87631-0 or 2-87631-9

Mating Crimp pins: Amp/Tyco 5-102095-4

J7		Led Status			
GND	1	o o	2	PTC FUSE	
RLINK_LED	3	o o	4	TLINK_LED	
FIBER_LED	5	o o	6	FUTURE_LED	
VID1_LED	7	o o	8	VID2_LED	
VID3_LED	9	o o	10	VID4_LED	
R1_LED	11	o o	12	T1_LED	
R2_LED	13	o o	14	T2_LED	
R3_LED	15	o o	16	T3_LED	
R4_LED	17	o o	18	T4_LED	
R5_LED	19	o o	20	T5_LED	
R6_LED	21	o o	22	T6_LED	
RDIAG_LED	21	o o	22	TDIAG_LED	

**NOTE: J7 header is located at the bottom center side of the board.
Pin 1 is the upper right pin – as identified by a square pad.**

**NOTE: J7 header is to be with a PRIZM display board only.
Contact PRIZM, if details are required.**

J8		ISP Header			
	+3.3V	1	o o	2	TMS
	TCK	3	o o	4	TDI
	N/C	5	o o	6	TDO
	GND	7	o o	8	

NOTE: J8 to be used only by PRIZM.

JUMPERS:

There are 6 jumpers on the Mini4 Video Input with SPF Board:
(PIN 1 DENOTED BY SQUARE PCB PAD)

JP1: RS-485/RS-422 selection for channel 8

1 o==o 2	for RS-485	1 o o 2	for RS-422
3 o==o 4		3 o o 4	

JP2: RS-485/RS-422 Selection for channel 8

1 o o 2	for RS-485	1 o o 2	for RS-422
3 o o 4		3 o o 4	

JP3: RS-485 Receiver Termination Enable for channel 8

1 o o 2	Not terminated	1 o=o 2	Terminated
---------	----------------	---------	------------

JP4: RS-485/RS-422 selection for channel 7

1 o==o 2	for RS-485	1 o o 2	for RS-422
3 o==o 4		3 o o 4	

JP5: RS-485/RS-422 Selection for channel 7

1 o o 2	for RS-485	1 o o 2	for RS-422
3 o o 4		3 o o 4	

JP6: RS-485 Receiver Termination Enable for channel 7

1 o o 2 Not terminated 1 o= o 2 Terminated

JP7: RS-485/RS-422 selection for channel 6

1 o==o 2		1 o o 2	
	for RS-485		for RS-422
3 o==o 4		3 o o 4	

JP8: Cypress microprocessor programming header – do not use.**JP9:** RS-485/RS-422 Selection for channel 6

1 o o 2		1 o o 2	
	for RS-485		for RS-422
3 o o 4		3 o o 4	

JP10: RS-485 Receiver Termination Enable for channel 6

1 o o 2 Not terminated 1 o= o 2 Terminated

JP11: RS-485/RS-422 selection for channel 5

1 o==o 2		1 o o 2	
	for RS-485		for RS-422
3 o==o 4		3 o o 4	

JP12: RS-485/RS-422 Selection for channel 5

1 o o 2		1 o o 2	
	for RS-485		for RS-422
3 o o 4		3 o o 4	

JP13: RS-485 Receiver Termination Enable for channel 5

1 o o 2 Not terminated 1 o= o 2 Terminated

4.2 Mini4 RS-232/RS-485/RS-422 Data Operation

The Mini4 System provides 4 independent channels of RS-232 data and 4 channels of either RS-485 or RS-422 data (jumper selectable). All data channels support at least 115.2 Kbaud, with the RS422 channel capable of up to 2.5Mbps. Refer to the Jumper Configuration section for specific jumper definitions and settings for the Data Mux board.

4.2.1 Mini4 RS-232 Data Channel Selection and Operation

The 4 channels of RS-232 are optically isolated in pairs (i.e. channels 1 & 2 share a common isolated power as do channels 3 & 4). There are no baud rate jumpers to select for RS-232 operation. The channels are simply time sampled at 12.5 mega samples per second (MSPS). The maximum RS-232 data rate is governed by the slew rate limiting on the RS-232 driver chips themselves.

4.2.2 Mini4 RS-485/RS-422 Data Channel Selection and Operation

The 4 RS-485/RS-422 channels can have several possible configurations. The configurations are selected by placing jumper shunts on several jumper posts. The RS-485/RS-422 channels have optical isolation (i.e. channels 1 & 2 share a common isolated power as do channels 3 & 4). If the channel is selected for RS-485 or RS-422 operation, then the data rate does not matter. The board accommodates all data rates up to 2.5 mega band.

4.3 Mini4 Data Mux Board Specifications

Optical

Link Data Rate:	up to 1.4 Gbps, 1.0 Gbps typically on the uplink/downlink
System Frame Rate:	up to 70 Mega samples/sec (MSPS), 50MSPS typically on the uplink/downlink
Fiber Options:	Singlemode or multimode
Laser Wavelengths:	All 16 CWDM wavelengths, from 1270 through 1610nm
Optical Output Levels:	0dBm transmitter power output, typically
Receiver Sensitivity:	-35 dBm receiver sensitivity, typically
Receiver Saturation:	-6 dBm, typically
Optical Budget:	35 dB, typically
Optical Link Lengths:	up to 20 kilometers with singlemode up to 1 kilometers with multimode

Onboard Data Channels

Number of Data Channels:	4 x RS-232, 4 x RS-485/422
RS-232 Data Rates:	At least 115Kbaud
RS-485 Data Rate:	At least 115Kbaud
RS-422 Data Rate:	At least 2.5Mbaud

Off board Data Capability - Daughterboard

Power	+5 or 3.3 VDC supplied via daughterboard connector
-------	--

Number of Data Channels Depends on daughterboard, refer to daughterboard manual

Remote LED Status Display Capability

J7 ribbon header carries LED status
as TTL level signals to Mini4 Display board (201650-xxx)

Misc.

Operating Temperature: 0 degree C to 65 degree C
(Except high temp version, which is -20 deg C to 70 deg C)

4.4 Mini4 Data Mux Board Dimensions

Printed circuit board (PCB): 3.55 in x 3.775 in x 0.60 in board-to-board
90.17 mm x 95.88 mm x 15.24 mm

4.5 Mini4 Data Mux Board Power Requirements

+5 Volts at 0.75 Amps (3.5 Watts), maximum (Main board only)

4.6 Power Section Testing

NOTE: There are connectors on the bottom of the Data Mux board have pins that are connected to +5VDC and ground. If these pins are inadvertently shorted together or to a common chassis ground, the board fuse (F2) will blow/trip.

If the +5V Power LED, +3.3V Power LED and +2.5V Power LED are out:

- Check for continuity of fuse F2 with an ohmmeter.
- Replace fuse if damaged.

If only the +3.3V Power LED is out:

- Verify +5VDC across C21 on top of board
- Verify +3.3VDC across C24 on top of board
 - If +3.3V is not available replace the board with a spare.
 - If +3.3V is available check the display LED (D9).

If only the +2.5V Power LED is out:

- Verify +5VDC across C21 on top of board
- Verify +2.5VDC across C17 on back of board
 - If +2.5V is not available replace the board with a spare.
 - If +2.5V is available check the display LED (D6).

If D1 is out and daughterboard operation is required:

- Verify that either F6 (for +3.3VDC to D/B) or F5 (for +5VDC to D/B) is placed and is not blown
- Replace fuse if damaged (it is a surface mount)

- Verify proper voltage at connector J2
 - If voltage is available, check the display LED (D1).

4.7 Optical Section Testing

If the FIBER LED, RMT LINK LED and/or LOC LINK LED are off or flickering, one or more of the following conditions is likely:

- The fiber is broken or damaged.
- The optical transceiver module is defective.
- Excessive light loss (low received optical power) is being experienced.
- The Mini4 board (not the optical transceiver module) is malfunctioning.
- There is not enough attenuation in the optical link and the receiver is saturating.

If excessive optical loss is being experienced, the following conditions may be present:

- Check the optical level with an optical power meter and inspect all fiber optic connections including WDM/CWDMs and slip rings.

To determine if the fiber is broken, a laser module is out, or the board is malfunctioning, first:

- Verify that the optical transceiver is tight in its socket.
- Verify that shunts (jumpers) are placed per system jumper configuration.
- Check all fiber optic connections including WDM/CWDMs and slip rings to make sure that they are not causing the problem.
- Check that the optical fiber cable is straight at connectors on board for minimum optic loss.

4.8 Data Section Testing

If one or more RS-232 data channels are out or has errors:

- Run RS-232 data into appropriate pins of connector J6 of the channel being tested. The RS-232 data can be input into either the remote vehicle or surface Mini4 board.
- On the other end of the link, short the same pins of connector J6 of the Mini4 RS-232 channel being tested. This will allow the two Mini4 boards to talk to each other in loop back. Both RX and TX LEDs on both boards should be lit and/or flickering in response to the data traffic.
- If the RS-232 data channel is not operating correctly, first check the RS-232. If the wiring appears correct, then first replace the Data Mux board with a spare and check the RS-232 channel again. If the problem is still there, return the original Data Mux board, replace the other Data Mux board with a spare and check the RS-232 again.
- If any of the LEDs are not operating correctly check one of the other channels. If the LEDs operate on that channel, replace the Mini4 board with a spare board or use the working channels only.

If one or more RS-485 data channel is out or has errors:

- Run RS-485 data into appropriate pins of connector J6. The RS-485 data can be input into either the remote vehicle or surface Mini4 board.

- On the other end of the link, attach the other computer used for RS-485 testing to the same pins of connector J6 of the Mini4 RS-485 channel. This will allow the two RS-485 test computers to talk to each other through the Mini4 boards. Both RX and TX LEDs on both boards should be lit and/or flickering in response to the data traffic.
- If the RS-485 data channel is not operating correctly, first check the RS-485 wiring then the jumpers on both Mini4 boards. If the wiring and jumpers appear correct, then replace first the Data Mux board with a spare and check the RS-485 again. If the problem is still there, return the Data Mux board, replace the other Data Mux board with a spare and check the RS-485 again.
- If any of the LEDs are not operating correctly check one of the other channels. If the LEDs operate on that channel, replace the Mini4 board with a spare board or use the working channels only.

If one or more RS-422 data channel is out or has errors:

- Run RS-422 data into appropriate pins of connector J6. The RS-422 data can be input into either the remote vehicle or surface Mini4 board.
- On the other end of the link, short the TX3+ pin to the RX3+ pin and the TX3- to RX3- pins of connector J6 of the Mini4 RS-422 channel being tested. This will allow the two Mini4 boards to talk to each other in loop back. Both RX and TX LEDs on both boards should be lit and/or flickering in response to the data traffic.
- If the RS-422 data channel is not operating correctly, first check the RS-422 wiring then the jumpers on both Mini4 boards. If the wiring and jumpers appear correct, then replace first the Data Mux board with a spare and check the RS-422 again.
- If the problem is still there, return the original Data Mux board, replace the other Data Mux board with a spare and check the RS-422 again. If any of the LEDs are not operating correctly check one of the other channels. If the LEDs operate on that channel, replace the Mini4 board with a spare board.

4.9 Stack Mini4 System Installation Checkout Procedure

For this PC/104 stack Mini4 System installation checkout procedure, it is assumed that the Mini4 System is composed of a Data Mux board mounted in the vehicle and a Data Mux board on the surface. +5VDC power for the Mini Mux boards is supplied by the user's DC power supply. Power to be connected to the green 2-pin Phoenix connectors located on the right side of the board (J5). Note that these boards DO NOT have PC/104 connectors.

1. At the vehicle, mount the Mini4 Data Mux board at a convenient space within the existing PC/104 stack. The board does not use the PC/104 bus. +5VDC power must be applied to the green 2-pin Phoenix connector J5.
2. Repeat all of the previous steps to install the Mini4 Data Mux board at the surface.

5 Diagnostics Overview

The Mini4 Video Input and Output boards have been designed to include hardware and firmware for monitoring various real-time parameters of interest on the board. This capability is accessed via a black3-

pin Phoenix connector on the right side of the board that carries bi-directional RS-485 telemetry to/from the monitoring PC to the Mini4 boards. The diagnostics modem will typically be used in conjunction with a user-supplied PC on the surface, which has been loaded with PRIZM Modem Monitoring software – PMON II.

The Diagnostics feature does not require the use of an RS-485 channel in the multiplexer system for connectivity between the topside Diagnostic PC and the remote multiplexer. The Diagnostics for the Mini4 TRANSPARENTLY carries the local and remote diagnostics over the fiber optic link.

NOTE: The diagnostics feature in no way interferes with normal operation of the Mini4 boards – it is not necessary to be running the diagnostics software for the Mini4 boards to work.

6 Communications Hardware

The diagnostics capability is accessed via the 3-pin RT+/RT- connector on the black 3-pin connector, which provides the RS-485 connectivity to the on-board processor for diagnostics communications. The user is required to communicate with the modems of the system via RS-485. A typical installations is shown in the following drawing.

Figure 1- Typical Cabling/Wiring for Back plane Diagnostics Telemetry

