

Ethernet and High Definition Slip Ring Capsules

AC7195

Ethernet and High Definition (HD) video slip ring capsule

Description

A slip ring can be used in any electromechanical system that requires unrestrained, continuous rotation while transferring video, power and data from a stationary to a rotating structure.

The AC7195, a derivative of our very popular AC6355 series, provides Ethernet and HD-SDI video communication in combination with 2 amp, 5 amp and 10 amp power or data connections and analog coax connections. The Ethernet cable is supplied terminated with a RJ45 connector, and the HD-SDI cable is terminated with a BNC connector, ready to install.

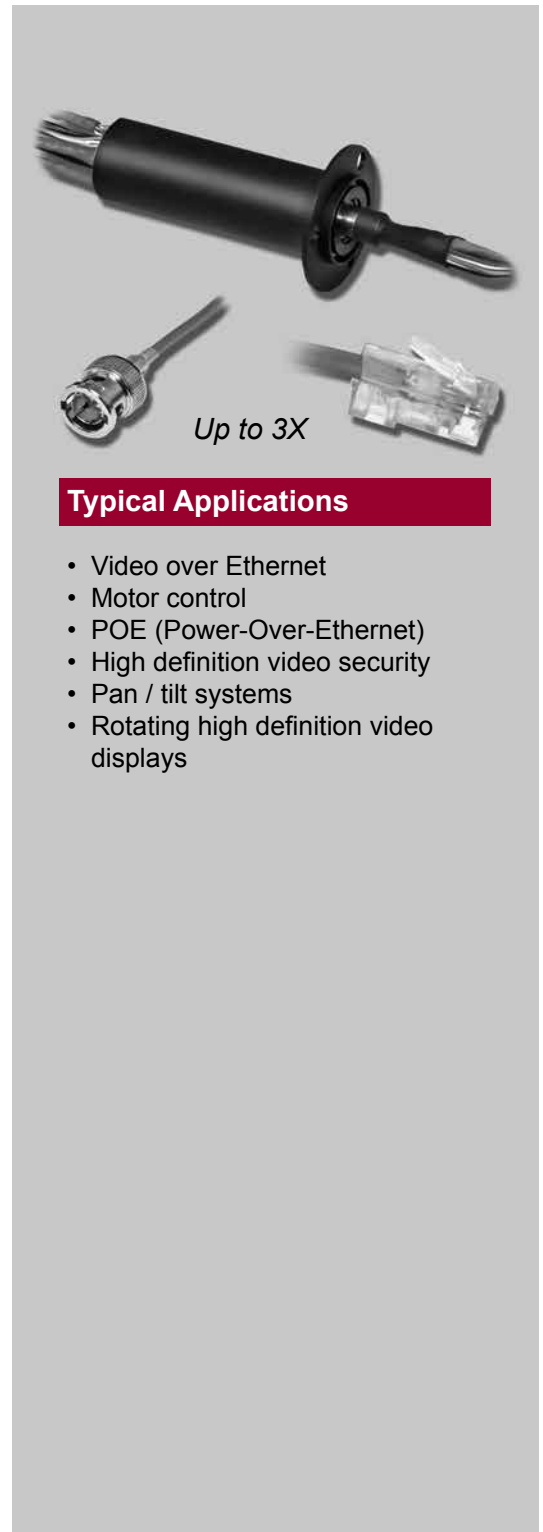
The AC7195 utilizes gold-on-gold contact technology with very low electrical noise for un-paralleled performance and provides functional life that exceeds any competitive slip ring.

Features

- Compliant with IEEE 802.3 formats
 - 10BaseT
 - 100BaseTx
 - 100BaseT2
 - 1000BaseT
- Compatible with HD-SDI
- Speeds up to 250 RPM
- 24 and 48 inch lead lengths
- Multiple circuit configurations available
- Sealing to dust and light fluid splash available

Benefits

- Compact
- Plug-and-play Ethernet and HD-SDI video connection



Typical Applications

- Video over Ethernet
- Motor control
- POE (Power-Over-Ethernet)
- High definition video security
- Pan / tilt systems
- Rotating high definition video displays

Ethernet and High Definition Slip Ring Capsules

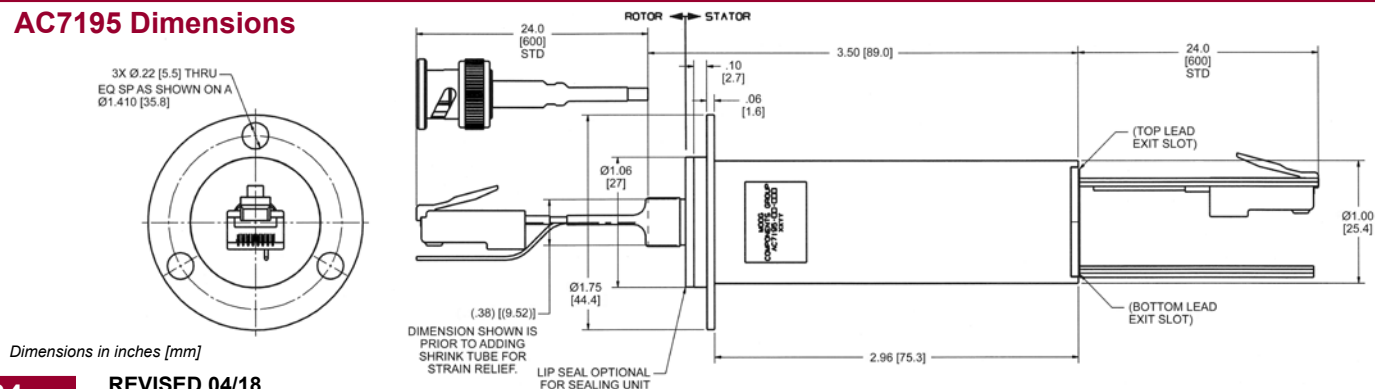
AC7195 Specifications		Options
Operating Speed	250 rpm*	<ul style="list-style-type: none"> Splash seals for dust and light fluid splash Standard 24 inch lead lengths, optional 48 inch available No flange Metal housing IP 65 rated slip ring available (see P/N AC7356 for dimensions)
Ethernet Connections	10 / 100BaseT and 1000BaseT	
video Connections	HD-SDI, 50 / 75 ohm coax	
Circuit Options	Ethernet plus coax, 2 amp, 5 amp and 10 amp	
Voltage	240 VAC on power circuits	
Temperature Range	-40°C to +80°C	
Contact Material	Gold	
Current Rating	2 to 10 amps	

*Please note that the operational life of the unit is dependent upon rotational speed, environment and temperature.

Circuit Table							
Part #	Continuous Current (amps)			Coaxial			Ethernet
	2	5	10	RG178	RG179	HD-SDI	1000BaseT (or 2 100BaseT)
AC7195-CC	23			4			1
AC7195-CG	20			2			2
AC7195-CH	23			2		1	1
AC7195-CK	23			2	2		1
AC7195-CN	33			2			1
AC7195-CV	25	4		2			1
AC7195-CX	25		2	2			1
AC7195-GG	17						3
AC7195-GH	20					1	2
AC7195-GK	20				2		2
AC7195-GN	30						2
AC7195-GV	22	4					2
AC7195-GX	22		2				2
AC7195-HH	23					2	1
AC7195-HK	23				2	1	1
AC7195-HN	33					1	1
AC7195-HV	25	4				1	1
AC7195-HX	25		2			1	1
AC7195-KK	23				4		1
AC7195-KN	33				2		1
AC7195-KV	25	4			2		1
AC7195-KX	25		2		2		1
AC7195-NN	43						1
AC7195-NV	35	4					1
AC7195-NX	35		2				1
AC7195-VV	27	8					1
AC7195-VX	27	4	2				1
AC7195-XX	27		4				1

NOTE: Contact factory for details on wire colors

AC7195 Dimensions



REVISED 04/18