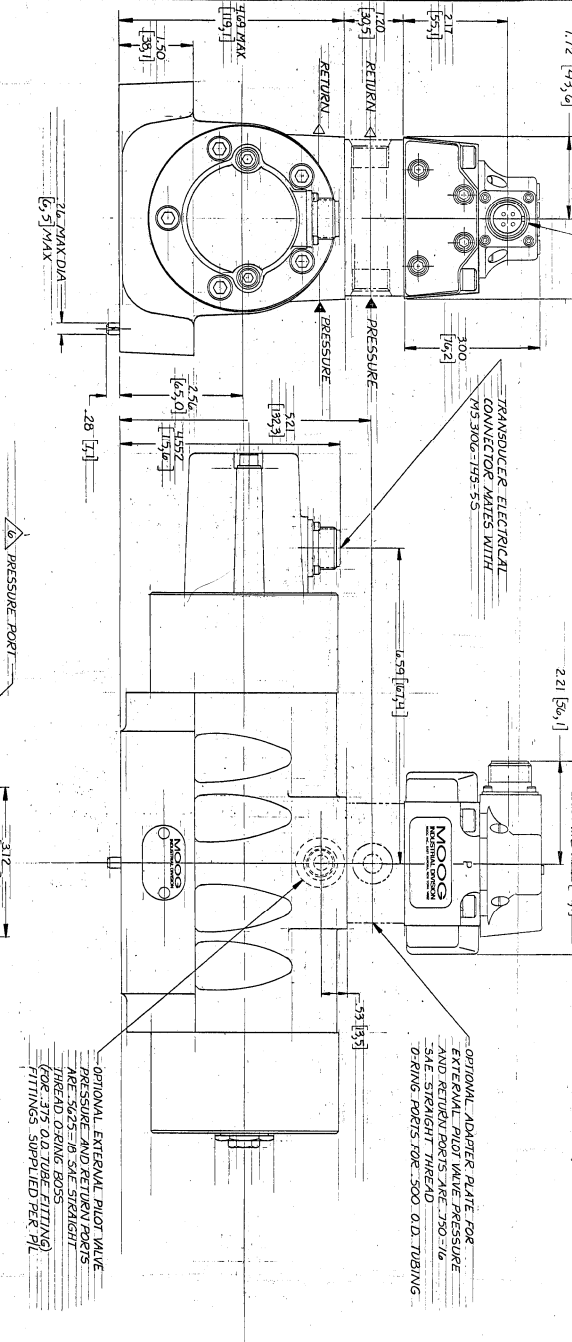
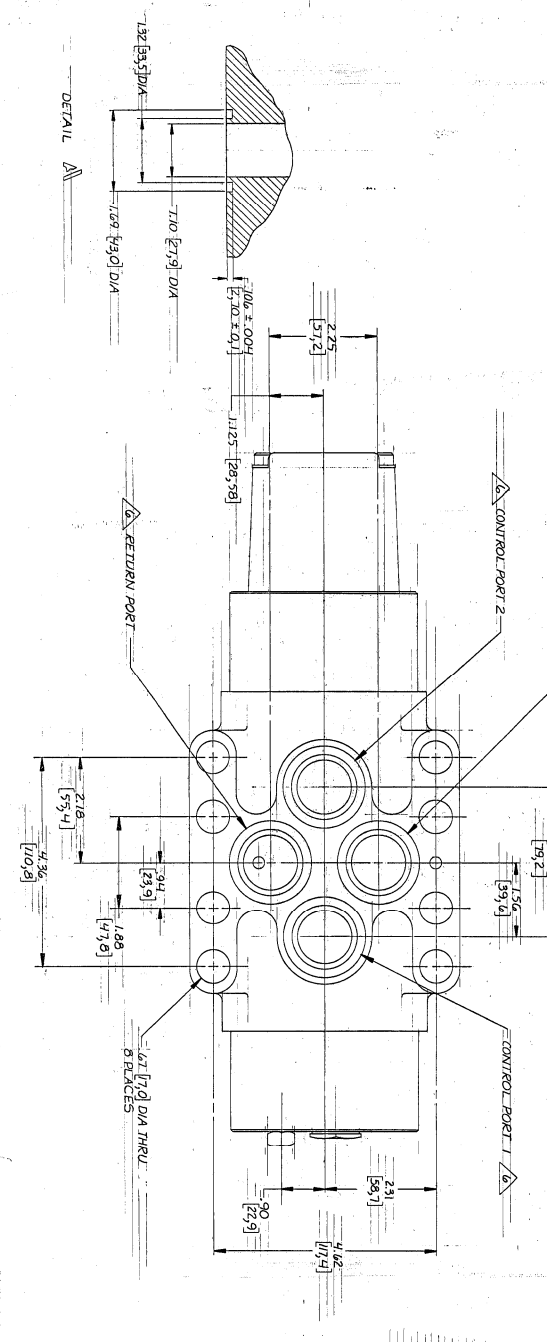


TWO STAGE PILOT VALVE
700 SERIES REMOVABLE
LTD SERIES REMOVABLE
WITH MS 3106-145-25

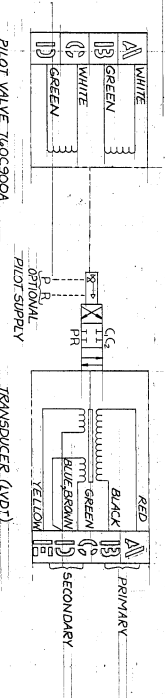


TRANSDUCER ELECTRICAL
CONNECTOR MATES WITH
MS 3106-145-55



LEAKAGE PORT
PORT PER SAE J1975-20 UNF-2B STR THD
(FOR .25 O.D. TUBING)
MAX PRESS = PILOT VALVE, RETURN PRESSURE

- NOTES:
- OPERATING PRESSURE: 3000 PSI MAX
 - PROOF PRESSURE: PRESSURE PORT (WITH RETURN OPEN) 4500 PSI
ALL PORTS: 3000 PSI
 - FLUID: INDUSTRIAL TYPE PETROLEUM BASE HYDRAULIC FLUID - 25
MICRON ABSOLUTE FILTRATION REQUIRED ON PILOT STAGE SUPPLY
 - OPERATING TEMPERATURE: -40°C (-40°F) TO +80°C (176°F)
 - PORT O-RINGS: POWER STAGE (BASE) MOOG PART NO. 280-45122-241 (MS28075-221)
PILOT STAGE (BASE) MOOG PART NO. 080-5112-22 (MS28075-015)
- BASE PORTS ARE PER DETAIL A
- DIMENSIONS IN BRACKETS ARE IN MILLIMETERS
 - FLOW RATINGS: 200 GPM AT 1000 PSI ± .100 INCH SPOOL TRAVEL
 - SPOOL TRAVEL: ± .13 INCHES TO MECHANICAL STOPS
 - SURFACE TO WHICH VALVE IS MOUNTED REQUIRES 1/32 FINISH & FLATNESS
WITHIN .002 TIR.



- PILOT VALVE 710C-900A
- NOTES: (PILOT VALVE)
1. PILOT VALVE MUST BE MOUNTED TO A RIGID SURFACE.
A. SERIES COILS: TEST INTERCONNECTED
B. PARALLEL COILS: 1/2 PLUS 1/2 PLUS 1/2
C. BATED FLOW: 20 MA
D. SENSITIVITY: 152Z (MIN)
- NOTES: (TRANSDUCER)
1. PHASE COMMON
2. EXCITATION: 15 VAC 60 HZ MAX AT 2 KHZ TO 70 HZ
3. SENSITIVITY: 0.85 VOLTS/INCH AT 6.5 KHZ ± 100K Ω

MOOG	3 STAGE SERVIVALVE	MODEL 19C211	94897	472868
INTERNET DRAWING	PER MIL-S15110-100	CONTROL NO.	MOOG INC. 1400 WILSON AVENUE	MOOG
DATE	REV	DESCRIPTION	DATE	REV
1/1/00	1	3 STAGE SERVIVALVE	1/1/00	1
1/1/00	2	REVISION	1/1/00	2
1/1/00	3	REVISION	1/1/00	3
1/1/00	4	REVISION	1/1/00	4
1/1/00	5	REVISION	1/1/00	5
1/1/00	6	REVISION	1/1/00	6
1/1/00	7	REVISION	1/1/00	7
1/1/00	8	REVISION	1/1/00	8
1/1/00	9	REVISION	1/1/00	9
1/1/00	10	REVISION	1/1/00	10