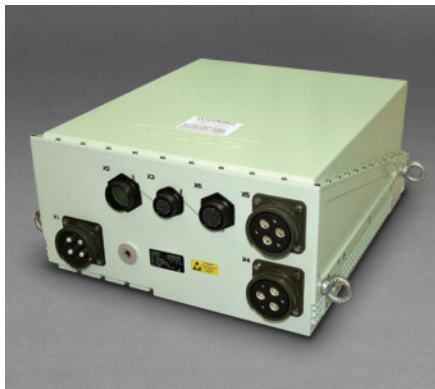


MC1000D SERIES 2-AXIS BRUSHLESS MOTOR CONTROLLER

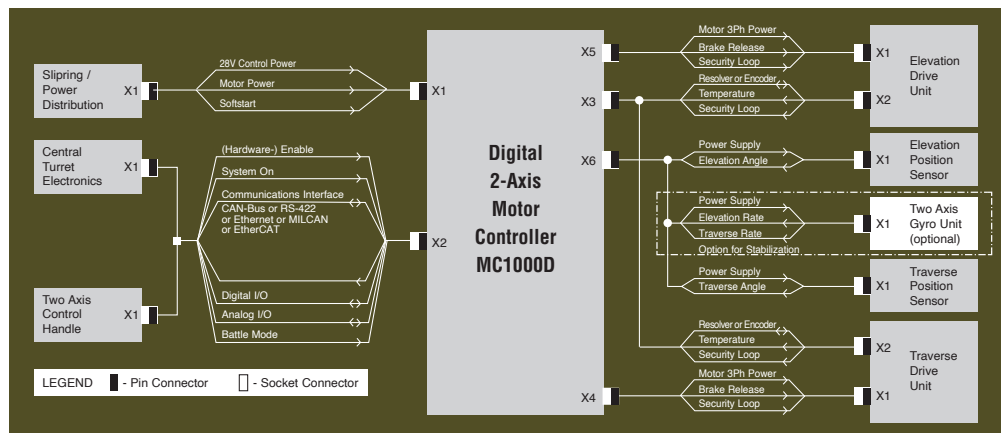


This series of digital militarized low voltage, 2-Axis, Brushless Motor Controllers is designed to provide torque, velocity and position loop closure. The controller accepts command signals from any fire control system (FCS) in either digital or analog format, and interfaces with a control handle. The advanced space vector algorithms provide optimum performance for new or existing motors to provide outstanding power densities. The sides of the controller have holes pre-drilled for use with mounting brackets. Lifting handles (2) can be added if required. See picture on page 2 of an

MC1000D model with lifting handles and shock mounts. Additionally, there are a wide range of end user programmable software features, as listed below.

PROGRAMMABLE SOFTWARE FEATURES

- Extensive built in test
- No-fire zones
- Obstacle avoidance zones
- End-damping limits
- HUMS (Health Usage Monitoring System)
- Acceleration limits
- Comprehensive loop tuning
- Tracking/Stabilization Modes
- Field weakening
- Joystick shaping function
- Analog and digital I/O
- Status and fault history
- Data logging



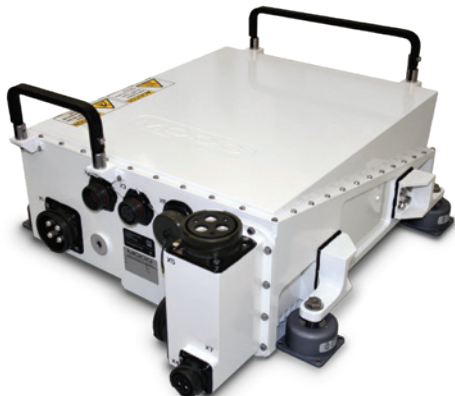
Note: All of our products are flexible and customizable to meet your specific needs. Please contact us for more information.



MC1000D SERIES 2-AXIS BRUSHLESS MOTOR CONTROLLER

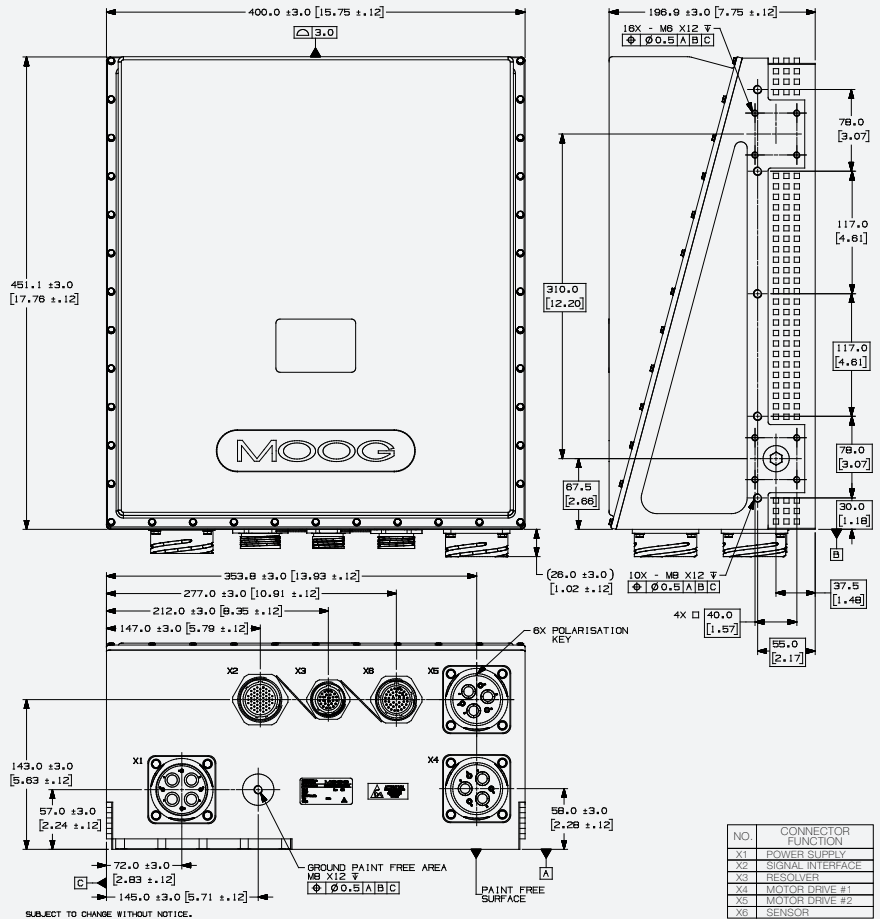
SPECIFICATIONS

| Parameter | Performance |
|------------------------------------|---|
| Power Supply (Control Electronics) | 18Vdc-32Vdc (per Mil-Std-1275) |
| Power Supply (Motors) | 18Vdc to 60Vdc Motor |
| Temperature (Ambient) | -40°C to 65°C |
| Environmental Specification | Complies with Mil-Std-810 |
| Command Communication Interface | CAN-Bus or RS-422 or Ethernet or MILCAN or EtherCAT |
| EMC Specification | Complies with Mil-Std-461 |
| Weight | 45kg (99lb) |
| Position Sensor Interface | SSI or EnDat Serial Interface |
| Motor Commutation Sensor | Resolver or Encoder |
| Envelope | 451 x 400 x 197mm (17.8 x 15.7 x 7.8in) |
| Self Protection | Over-Temperature and Over-Current |
| Output Current (for each axis) | 800A Peak |
| Option: Stabilization Kit | 2-Axis Gyro Interface |



MC1000D Model with Lifting Handles, Shock Mounts and Connector Doghouse

DIMENSIONS mm (in)



MOOG
SPACE AND DEFENSE GROUP

East Aurora, NY 14052 USA
+1.716.652.2000
www.moog.com



MoogSpace and Defense



@MoogSDG



@MoogSDG



@MoogSDG



@MoogInc