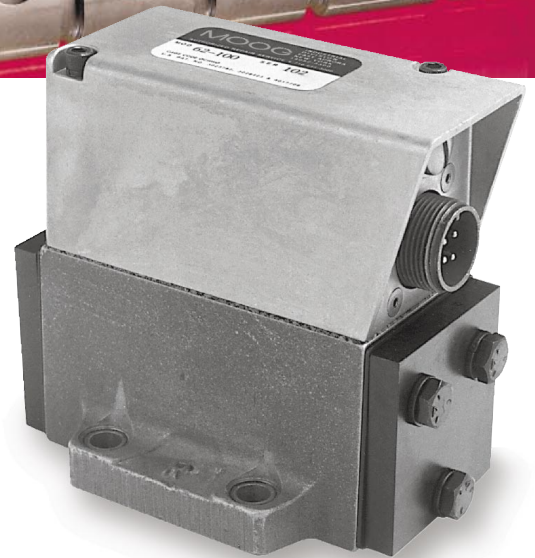


MOOG

62 Series Servovalves



62 SERIES TWO STAGE SERVOVALVES

62 SERIES SERVOVALVES

The 62 Series flow control servovalves are throttle valves for 3- and preferably 4-way applications. They are a standard performance, two-stage design that covers the range of rated flows from 2.5 to 20 gpm at 1000 psi valve drop. The output stage is a closed center, four-way sliding spool. The pilot stage is a symmetrical double-nozzle and flapper, driven by a double air gap, dry torque motor. Mechanical feedback of spool position is provided by a cantilever spring. The valve

design is simple and rugged for dependable, long life operation. These valves are suitable for electrohydraulic position, speed, pressure or force control systems with high dynamic response requirements.

Principle of operation

An electrical command signal (flow rate set point) is applied to the torque motor coils, and creates a magnetic force which acts on the ends of the pilot stage armature. This causes a deflection of the armature/flap

per assembly within the flexure tube. Deflection of the flapper restricts fluid flow through one nozzle which is carried through to one spool end, displacing the spool.

Movement of the spool opens the supply pressure port (P) to one control port, while simultaneously opening the tank port (T) to the other control port. The spool motion also applies a force to the cantilever spring, creating a restoring torque on the armature/flapper assembly.

Once the restoring torque becomes equal to the torque from the magnetic forces, the armature/flapper assembly moves back to the neutral position, and the spool is held open in a state of equilibrium until the command signal changes to a new level.

In summary, the spool position is proportional to the input current and with constant pressure drop across the valve, flow to the load is proportional to the spool position.

VALVE FEATURES

- > 2-stage design with dry torque motor
- > Low friction double nozzle pilot stage
- > High spool control forces
- > High dynamics
- > Low cost design
- > Rugged, long-life design
- > High resolution, low hysteresis
- > Completely set-up at the factory

The actual flow is dependent upon electrical command signal and valve pressure drop. The flow for a given valve pressure drop can be calculated using the square root function for sharp edge orifices:

$$Q = Q_N \sqrt{\frac{\Delta p}{\Delta p_N}}$$

- Q [gpm] = calculated flow
- Q_N [gpm] = rated flow
- Δp [psi] = actual valve pressure drop
- Δp_N [psi] = rated valve pressure drop



This catalog is for users with technical knowledge. To ensure that all necessary characteristics for function and safety of the system are given, the user has

to check the suitability of the products described here. In case of doubt, please contact Moog Inc.

62 SERIES
GENERAL TECHNICAL DATA

Operating Pressure

ports P,A and B up to 3,000 psi
port T up to 2,000 psi

Temperature Range

Fluid 0°F to 200°F
Ambient 0°F to 200°F

Seal Material

Viton, others on request

Operating Fluid

Compatible with common hydraulic fluids, other fluids on request.

Recommended viscosity 60-450 SUS @ 100°F

System Filtration: High pressure filter (without bypass, but with dirt alarm) mounted in the main flow and if possible, directly upstream of the valve.

Class of Cleanliness: The cleanliness of the hydraulic fluid greatly effects the performance (spool positioning, high resolution) and wear (metering edges, pressure gain, leakage) of the servovalve.

Recommended Cleanliness Class

For normal operation ISO 4406 < 14/11
For longer life ISO 4406 < 13/10

Filter Rating Recommended

For normal operation $\beta_{10} \geq 75$ (10 μm absolute)
For longer life $\beta_5 \geq 75$ (5 μm absolute)

Installation Operations

Any position, fixed or moveable.

Vibration

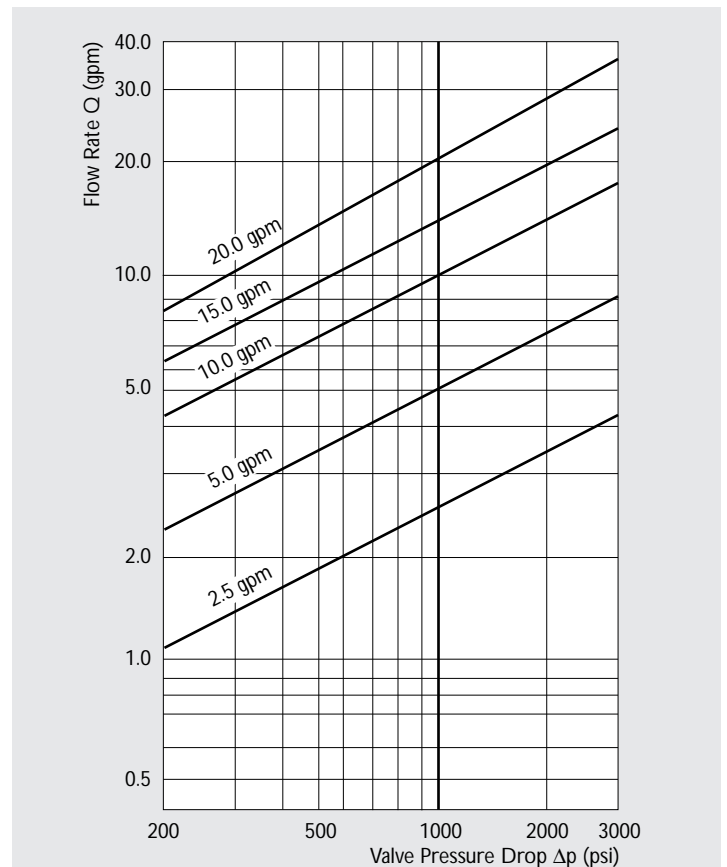
30 g, 3 axes

Weight

2.7 lb. (1.2 kg)

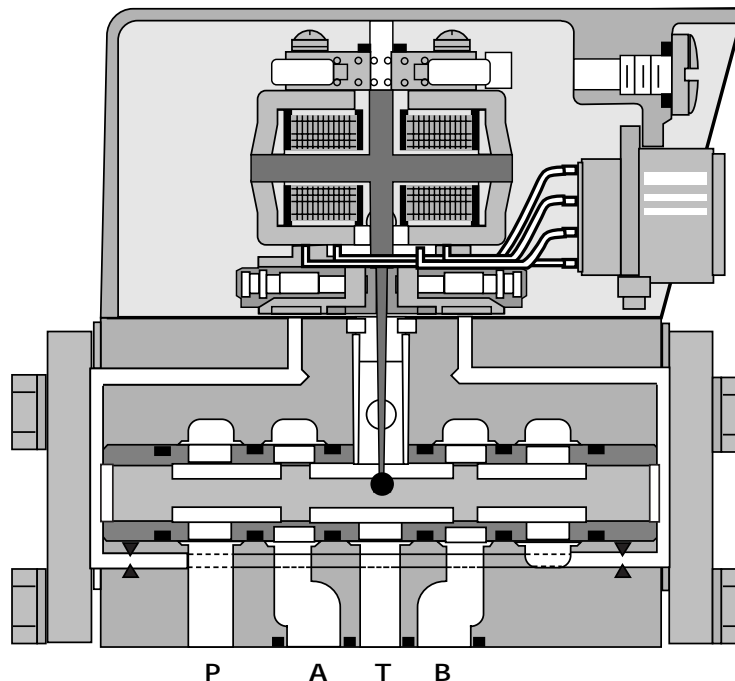
Shipping Plate

Delivered with an oil sealed shipping plate.



Valve Flow Diagram

Valve flow for maximum valve opening (100% command signal) as a function of the valve pressure drop.



62 SERIES
TECHNICAL DATA

Model ... Type
Mounting Pattern
Valve Body Version

Pilot Stage
Pilot Connection

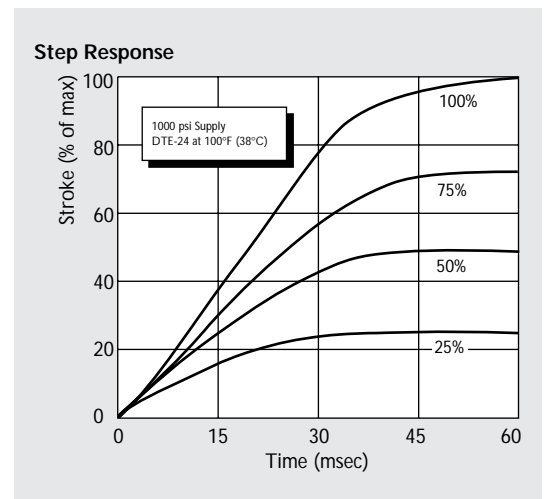
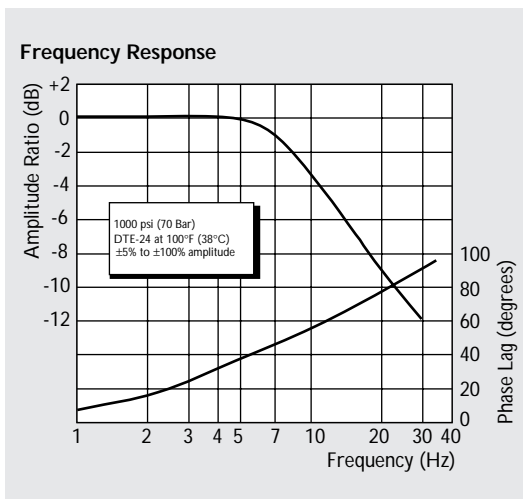
Rated Flow	(±10%) at $\Delta p_N = 1,000$ psi	[gpm]	2.5	5.0	10.0	15.0	20.0
Response Time*		[ms]	60	60	60	60	60
Threshold*		[%]			< 1%		
Hysteresis*		[%]			< 5%		
Null Shift	at $\Delta T = 100^\circ F$	[%]			< 5%		
Null Leakage Flow*	max.	[gpm]			0.35 to 0.55		

* Measured at 1,000 psi operating pressure

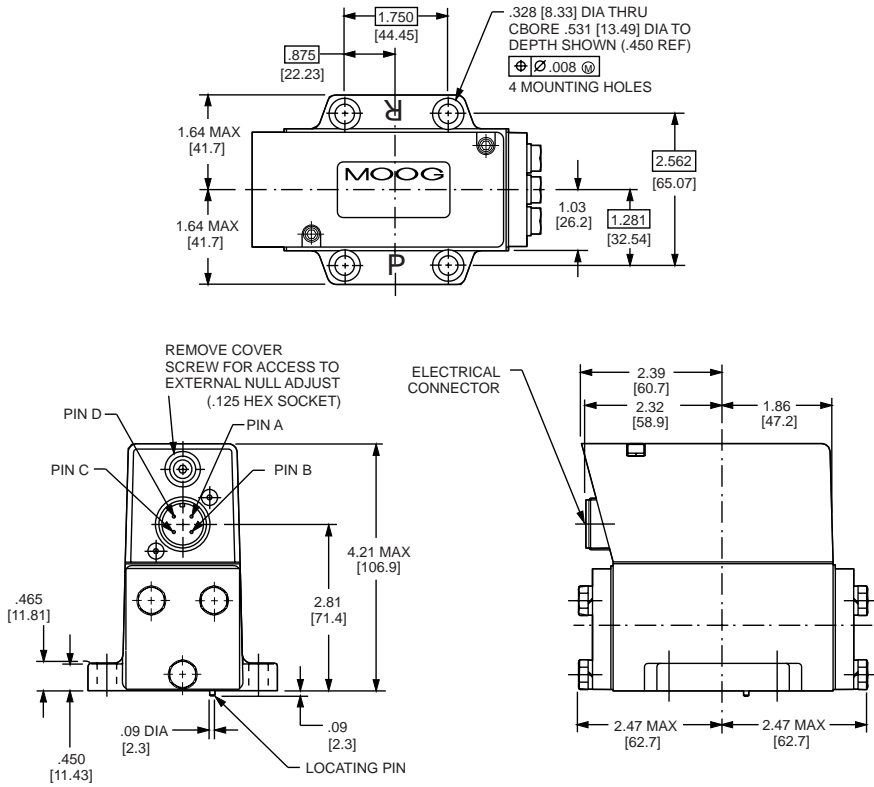
62

ISO 10372 - 04 - 04 - 0 - 92
4-way
2-stage with spool bushing design
Nozzle/Flapper, High flow
Internal only

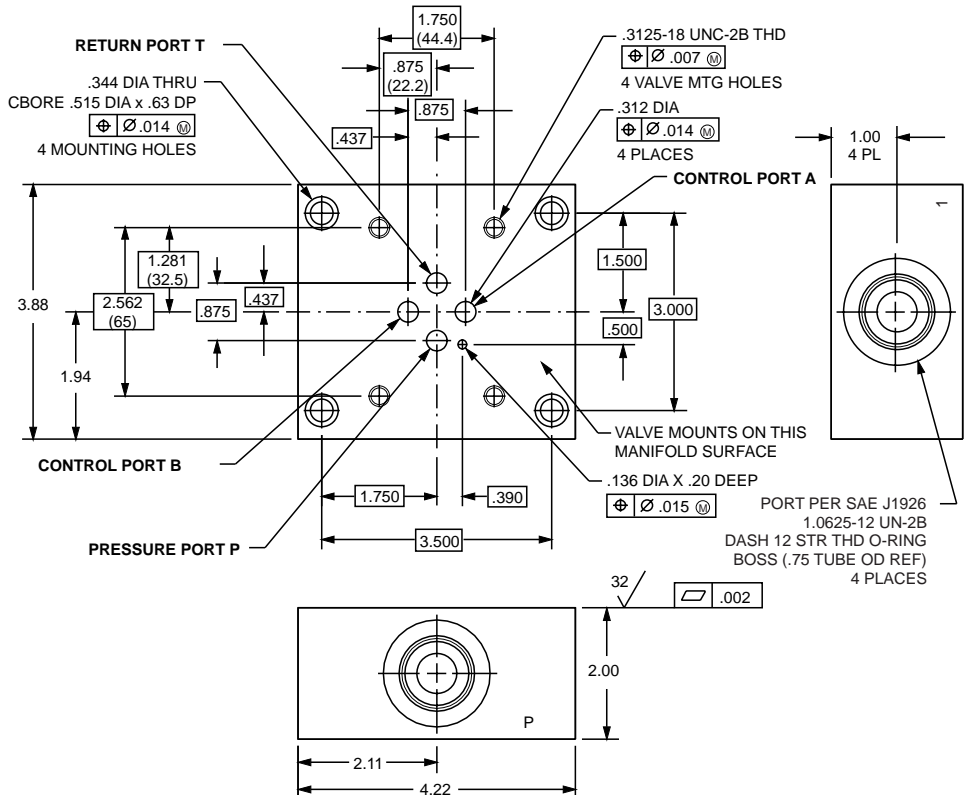
Typical characteristic curves with ±5% to ±100% input signal, measured at 1,000 psi operating pressure.



62 SERIES INSTALLATION DRAWINGS



TYPICAL SUBPLATE MANIFOLD



Null Adjust: Flow out of Control Port B will increase with clockwise rotation of null adjust screw (1/8 hex key).

The mounting manifold must conform to ISO 10372-04-04-0-92 Surface to which valve is mounted requires a $\sqrt{32}$ [ΔΔ] finish, flat within 0.002 [0.05] TIR.

62 SERIES ELECTRICAL CONNECTIONS

Rated current and coil resistance

Two different coil designs are available for 62 Series Servovalves. See Table 1.

Coil connections

A four-pin electrical connector (that mates with an MS3106R14S-2S) is standard. All four torque motor leads are available at the connector so external connections can be made for series, parallel or differential operation.

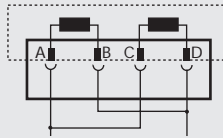
Servoamplifier

The servovalve responds to input current, therefore a servoamplifier that has high internal impedance (as obtained with current feedback) should be used. This will reduce the effects of coil inductance and will minimize changes due to coil resistance variations.

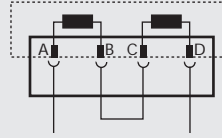
ELECTRICAL CONNECTIONS

(Example with typical 62 series coils)

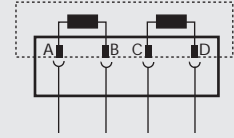
Parallel



Series



Single



Coil Resistance	[Ω]	14	56	28
Rated Current	[mA]	± 100	± 50	± 100
Electrical Power	[W]	.14	.14	.28
Connections for Valve Opening		A and C (+)	A (+), D (-)	A (+), B (-)
P \blacktriangleright B, A \blacktriangleright T		B and D (-)	B and C connected	or C (+), D (-)

Note: Before applying electrical signals, the pilot stage has to be pressured.

TABLE 1

Nominal Resistance Per Coil at 77°F (25°C) Ω	Recommended Rated Current—mA		Approximate Coil Inductance*—Henrys		
	Parallel, Differential or Single Coil Operation	Series Coils	Single Coils	Series Coils	Parallel Coils
28	100	50	0.2	0.8	0.2
300	30	15	2	7	2

* Measured at 50 Hz.

62 SERIES
ORDERING INFORMATION
SPARE PARTS AND ACCESSORIES

Model Number		Type Designation	
62	• • • • •	• • • • •	• • • • •
Optional Feature		Signals for 100% Spool Stroke	
	Series specification	Q	±15 mA Series (±30 mA parallel)
K	Intrinsically safe	R	±50 mA Series (±100 mA parallel)
		Y	Special signal (see spec sheet)*
Model Designation		Valve Connector	
	Assigned at the factory	A	Connector C1 (A) – side (RH)
		B	Connector C2 (B) – side (LH)
Factory Identification (Revision Level)		Seal Material	
		V	Viton
		N	NBR (Buna)
			Others on request*
Value Version		Pilot Connection and Pressure	
S	Standard response		Pressure [psi] Supply
		A	250 to 3,000 internal
Rated Flow		Spool Position without Electrical Signal	
	Q_N [gpm] at Δp_N = 1,000 psi	M	Mid position
10	2.5		
20	5.0		
40	10.0		
60	15.0		
75	20.0		
Maximum Operating Pressure P_P and Body Material		Pilot Stage	
F	3,000 psi aluminum	F	Standard dynamics
Main Spool Type			
O	4-way / axis cut / linear		
D	4-way / +/-10% overlap / linear		
X	Special*		

Preferred configurations highlighted.
 All combinations may not be available.
 Options may increase price and delivery.
 Technical changes are reserved.

* Optional designs are available with intrinsically safe coils (FM approved), and/or special spool bushing lap configuration. Available seal materials: VITON (Std.), BUNA or EPR.

SPARE PARTS AND ACCESSORIES

O-Rings (included in delivery) for P,T,A and B	FPM 85 Shore 1D 0.426 x .070	Moog P/N 42082-022
Mating Connector, waterproof IP 65 (not included in delivery)		49054F14S2S (MS3106F14S-2S)
Flushing Block		23718-1K1
Mounting Bolts (not included in delivery) 5/16 - 18 NC x 1.0 long (4 pieces)		A31324-216B
Orifice Assembly with Filter (2 required)		70714
Filter Replacement Kit		B52555RK36K1



Australia	Mulgrave
Brazil	São Paulo
China	Hong Kong
	Shanghai
Denmark	Copenhagen
England	Tewkesbury
Finland	Espoo
France	Rungis



Germany	Böblingen
India	Bangalore
Ireland	Ringaskiddy
Italy	Brescia
	Malnate
Japan	Hiratsuka
Korea	Seoul
Luxembourg	Luxembourg City
Philippines	Baguio
Singapore	Singapore
Spain	Orio
Sweden	Askim
USA	East Aurora

MOOG
Industrial Controls Division
Moog Inc., East Aurora, NY 14052-0018
Telephone: 716/655-3000
Fax: 716/655-1803
Toll Free: 1-800-272-MOOG
www.moog.com