

907-GBE

Fiber optic media converter

Description

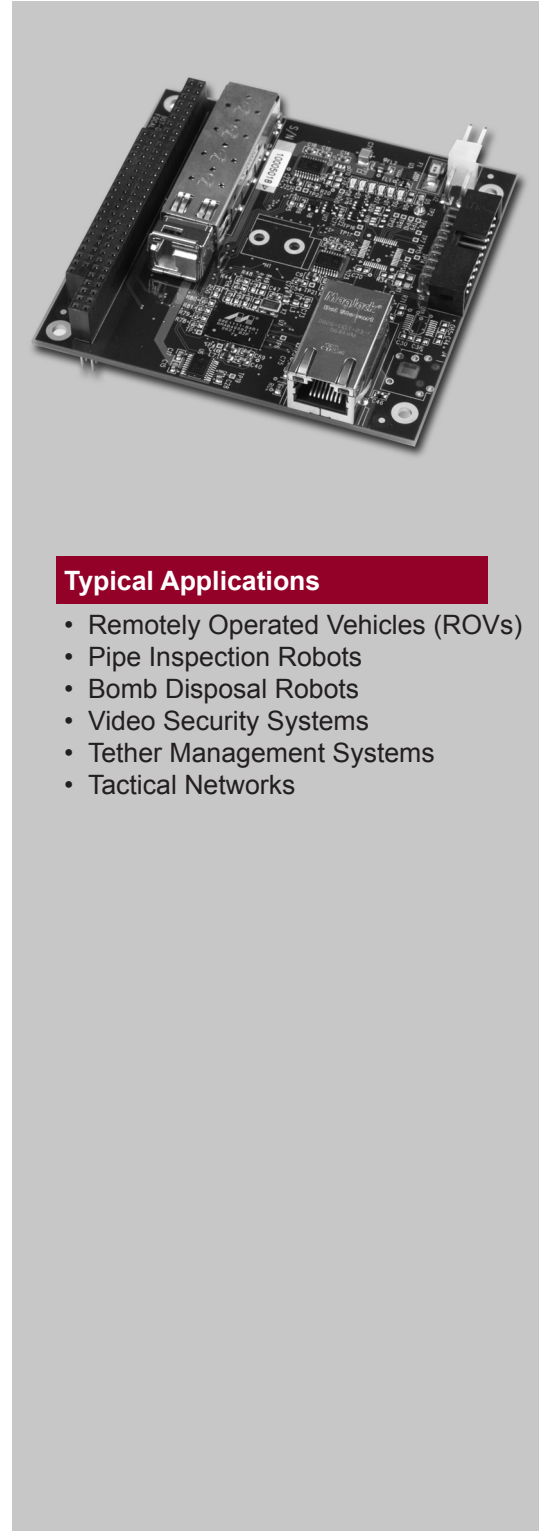
The Model 907 Gigabit Ethernet (GbE) Media Converter is a PC / 104 form-factor card that optically transfers Ethernet data at 1000 Mbps with low latency over a singlemode fiber. All three standard Ethernet rates (10 / 100 / 1000 Mbps) are compatible with the copper side RJ-45 input. As with other 907 media converters, the 907-GBE may be used as a standalone card or combined optically with other 907 cards. Optical power budgets are typically 20-26 dB with 10 km or more of singlemode fiber. Diagnostics are available as on-board LEDs for optical and data link status.

Features

- Lowest latency (no switch buffer delays)
- Compatible with 10 / 100 / 1000 Mbps copper links per IEEE 802.3
- Replaceable SFP transceivers

Benefits

- Provides fastest response for time-critical links
- Backwards compatible with older 10 / 100 Mbps links
- Supports a wide range of optical options including CWDM for combining up to 8 separate GbE links on a single fiber



Typical Applications

- Remotely Operated Vehicles (ROVs)
- Pipe Inspection Robots
- Bomb Disposal Robots
- Video Security Systems
- Tether Management Systems
- Tactical Networks

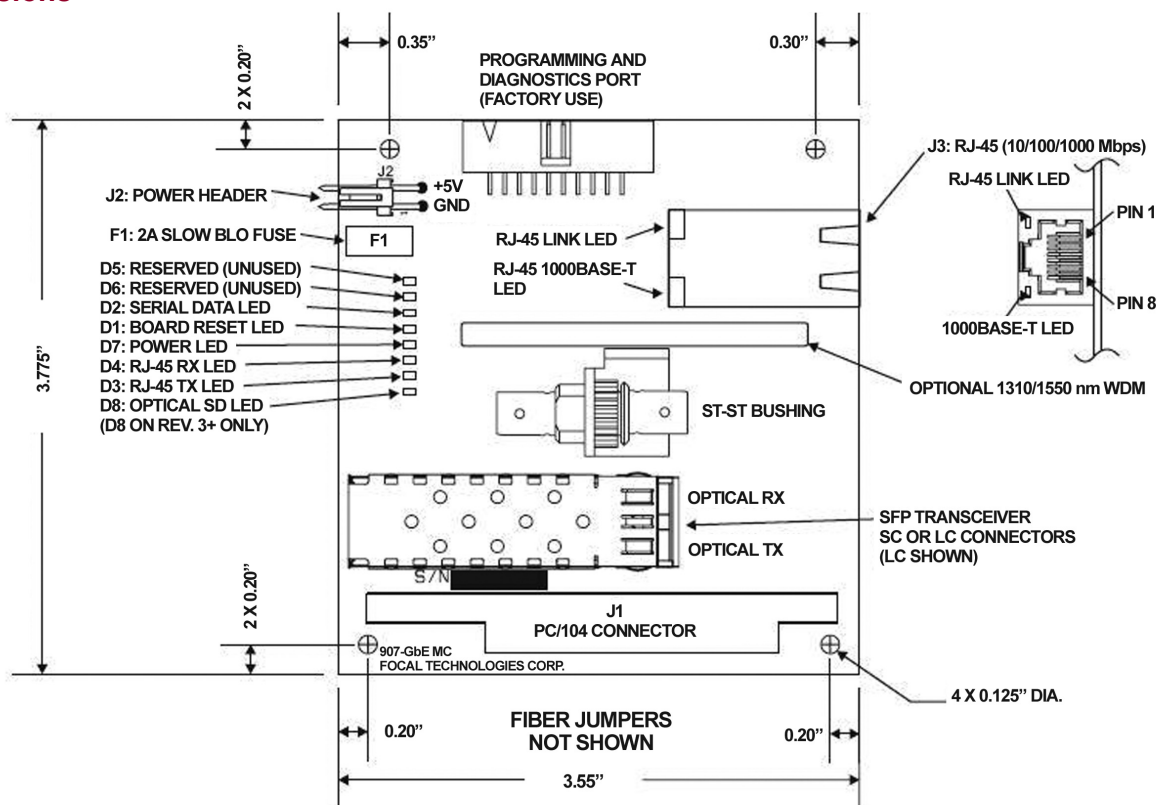


Fiber Optic Multiplexers

Data	
No. Channels	1
Format	10 / 100 / 1000 BASE-T / -TX Full Duplex
Options	Half Duplex 10 / 100 Mbps Ethernet is supported for < 2 km optical links.
Optical	
Optical Fiber	1 or 2 singlemode
Data Rate	1.25 Gbaud uplink and downlink
Format	SGMII
Wavelengths	1310, 1550 nm standard, CWDM optional
Flux Budget	20 dB min. (standard)
Options	1310 / 1550 nm WDM standard; CWDM options for combining multiple 907 systems on one singlemode fiber; bidirectional transceivers; extended temperature.

Electrical	
Power Supply	+5 VDC regulated input required
Power Used	4 W typical, each end
Options	Isolated power card (DC-DC)
Mechanical	
Dimensions	PC / 104 (form factor only)
Weight	120 g (0.25 lb) loaded with SFP
Enclosures	Standard and custom versions available
Options	Eurocard adapter for installation in a standard 3U Eurocard rack with front panel access to RJ-45
Connectors	
Optical	ST/PC (standard), LC CWDM options
Data	RJ-45
Power	2 pin Molex, 0.156" pin spacing
Environmental	
Temperature	-10 to +60 C (operating, ambient) -40 to +85 C (storage)
Humidity	85% relative, non-condensing
Vibration	MIL-STD-167-1 (ships), 3-axis
Shock	MIL-STD-810E

907 GbE Dimensions



Manufactured in an ISO 9000-2000 registered facility.

Specifications and information are subject to change without prior notice. Photo credit to Steve Kaiser 2007.
©2007 Moog Inc. MS1051, rev. 4 12/07