

## BN12 IP SPECIFICATIONS - Continuous Stall Torque 2.4 - 8.6 oz-in (0.0170 - 0.0607 Nm) Peak Torque 13 - 77 oz-in (0.0918 - 0.5437 Nm)

Part Number*		BN12-13IP- <input type="checkbox"/> <input type="checkbox"/> <input type="checkbox"/> <input type="checkbox"/>			BN12-18IP- <input type="checkbox"/> <input type="checkbox"/> <input type="checkbox"/> <input type="checkbox"/>			BN12-23IP- <input type="checkbox"/> <input type="checkbox"/> <input type="checkbox"/> <input type="checkbox"/>			BN12-28IP- <input type="checkbox"/> <input type="checkbox"/> <input type="checkbox"/> <input type="checkbox"/>		
Winding Code**		01	02	03	01	02	03	01	02	03	01	02	03
L = Length	inches	1.82			2.32			2.82			3.32		
	millimeters	46.2			58.9			71.6			84.3		
Terminal Voltage	volts DC	12.0	24.0	36.0	12.0	24.0	36.0	12.0	24.0	36.0	12.0	24.0	36.0
Peak Torque	oz-in	13.0	13.0	14.0	37.0	37.0	39.0	58.0	58.0	61.0	77.0	77.0	72.0
	Nm	0.0918	0.0918	0.0989	0.2613	0.2613	0.2754	0.4096	0.4096	0.4308	0.5437	0.5437	0.5084
Continuous Stall Torque	oz-in	2.4	2.4	2.4	4.9	5.0	5.0	6.9	6.9	6.9	8.3	8.6	8.6
	Nm	0.0169	0.0169	0.0169	0.0346	0.0353	0.0353	0.0487	0.0487	0.0487	0.0586	0.0607	0.0607
Rated Speed	RPM	13027.0	12736.0	13753.0	11928.0	11448.0	12320.0	10604.0	10601.0	11489.0	11036.0	10253.0	9529.0
	rad/sec	1364	1334	1440	1249	1199	1290	1110	1110	1203	1156	1074	998
Rated Torque	oz-in	1.8	1.8	1.8	3.5	3.6	3.5	5.0	5.0	4.7	5.4	5.9	6.2
	Nm	0.0127	0.0127	0.0127	0.0247	0.0254	0.0247	0.0353	0.0353	0.0332	0.0381	0.0417	0.0438
Rated Current	Amps	2.26	1.13	0.77	3.49	1.76	1.20	4.32	2.16	1.46	4.81	2.46	1.61
Rated Power	watts	17.3	17.0	18.3	30.9	30.5	31.9	39.2	39.2	39.9	44.1	44.7	43.7
Torque Sensitivity	oz-in/amp	1.02	2.06	2.95	1.24	2.56	3.64	1.42	2.84	4.01	1.41	2.99	4.75
	Nm/amp	0.0072	0.0145	0.0208	0.0088	0.0181	0.0257	0.0100	0.0201	0.0283	0.0100	0.0211	0.0335
Back EMF	volts/KRPM	0.75	1.53	2.18	0.92	1.89	2.69	1.05	2.10	2.96	1.04	2.21	3.51
	volts/rad/sec	0.0072	0.0145	0.0208	0.0088	0.0181	0.0257	0.0100	0.0201	0.0283	0.0100	0.0211	0.0335
Terminal Resistance	ohms	0.953	3.89	7.85	0.403	1.67	3.36	0.294	1.18	2.36	0.219	0.934	2.36
Terminal Inductance	mH	0.254	1.100	2.210	0.181	0.742	1.460	0.172	0.692	1.374	0.128	0.447	1.220
Motor Constant	oz-in/sq.rt.watt	1.04	1.04	1.05	1.95	1.98	1.99	2.62	2.61	2.61	3.01	3.09	3.09
	Nm/sq.rt.watt	0.00738	0.00738	0.00744	0.01379	0.01399	0.01402	0.01849	0.01846	0.01843	0.02128	0.02185	0.02183
Rotor Inertia	oz-in-sec <sup>2</sup> x10 <sup>-3</sup>	0.040	0.040	0.040	0.080	0.080	0.080	0.120	0.120	0.120	0.16	0.16	0.16
	g-cm <sup>2</sup>	2.82	2.82	2.82	5.65	5.65	5.65	8.47	8.47	8.47	11.3	11.3	11.3
Weight	oz	3.6	3.6	3.6	5.5	5.5	5.5	7.3	7.3	7.3	9.1	9.2	9.2
	g	102.2	102.2	102.2	156.2	156.2	156.2	207.3	207.3	207.3	258.4	261.3	261.3
# of Poles		8.0	8.0	8.0	8.0	8.0	8.0	8.0	8.0	8.0	8.0	8.0	8.0
Timing		120°	120°	120°	120°	120°	120°	120°	120°	120°	120°	120°	120°
Mech. Time Constant	ms	5.2	5.2	5.1	3.0	2.9	2.9	2.5	2.5	2.5	2.5	2.4	2.4
Electrical Time Constant	ms	0.14	0.14	0.14	0.24	0.25	0.25	0.29	0.29	0.29	0.29	0.31	0.31
Thermal Resistivity	deg. C/watt	10.7	10.3	11.2	9.5	8.9	9.3	8.3	8.3	8.3	7.7	7.3	7.4
Speed/Torque Gradient	rpm/oz-in	1245.8	1234.2	1220.6	353.3	345.2	343.2	197.2	197.9	198.8	149.3	141.3	141.6

**Notes:**

- Motor mounted to a 4" x 4" x 1/4" aluminum plate, still air.
- Maximum winding temperature of 155°C.
- Typical electrical specifications at 25°C.
- Motor Terminal Voltages are representative only; motors may be operated at voltages other than those listed in the table. For assistance please contact our applications engineer.
- Calculated (theoretical) speed/torque gradient.
- For MS (military style) connector, please specify connector housing and terminal.
- Data for informational purposes only. Should not be considered a binding performance agreement. For specific applications, please contact the factory.

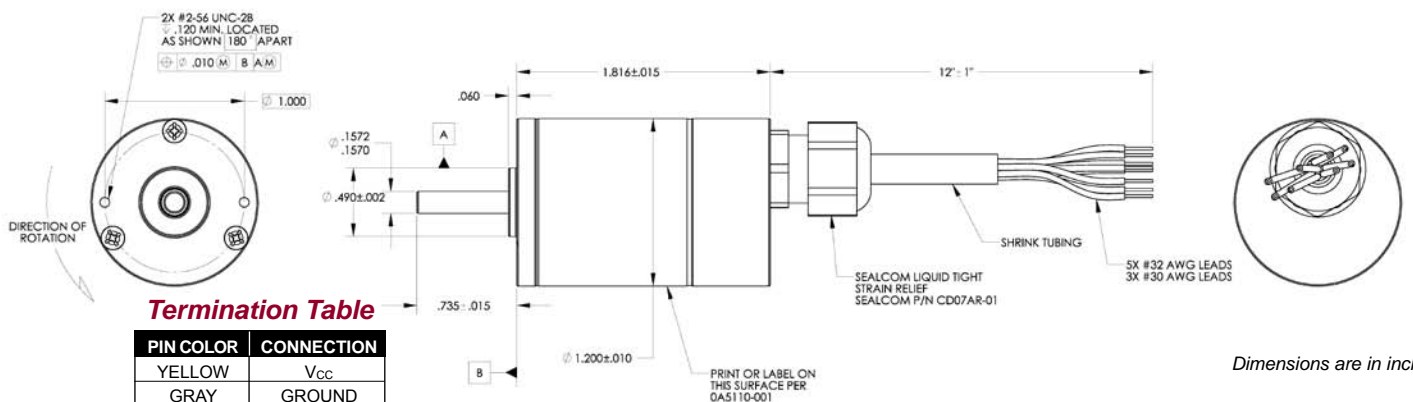
\*Many other custom mechanical options are available – consult factory.

\*\*Many other winding options are available – consult factory.

Select your options below and place their code in its corresponding block as shown on page 6.

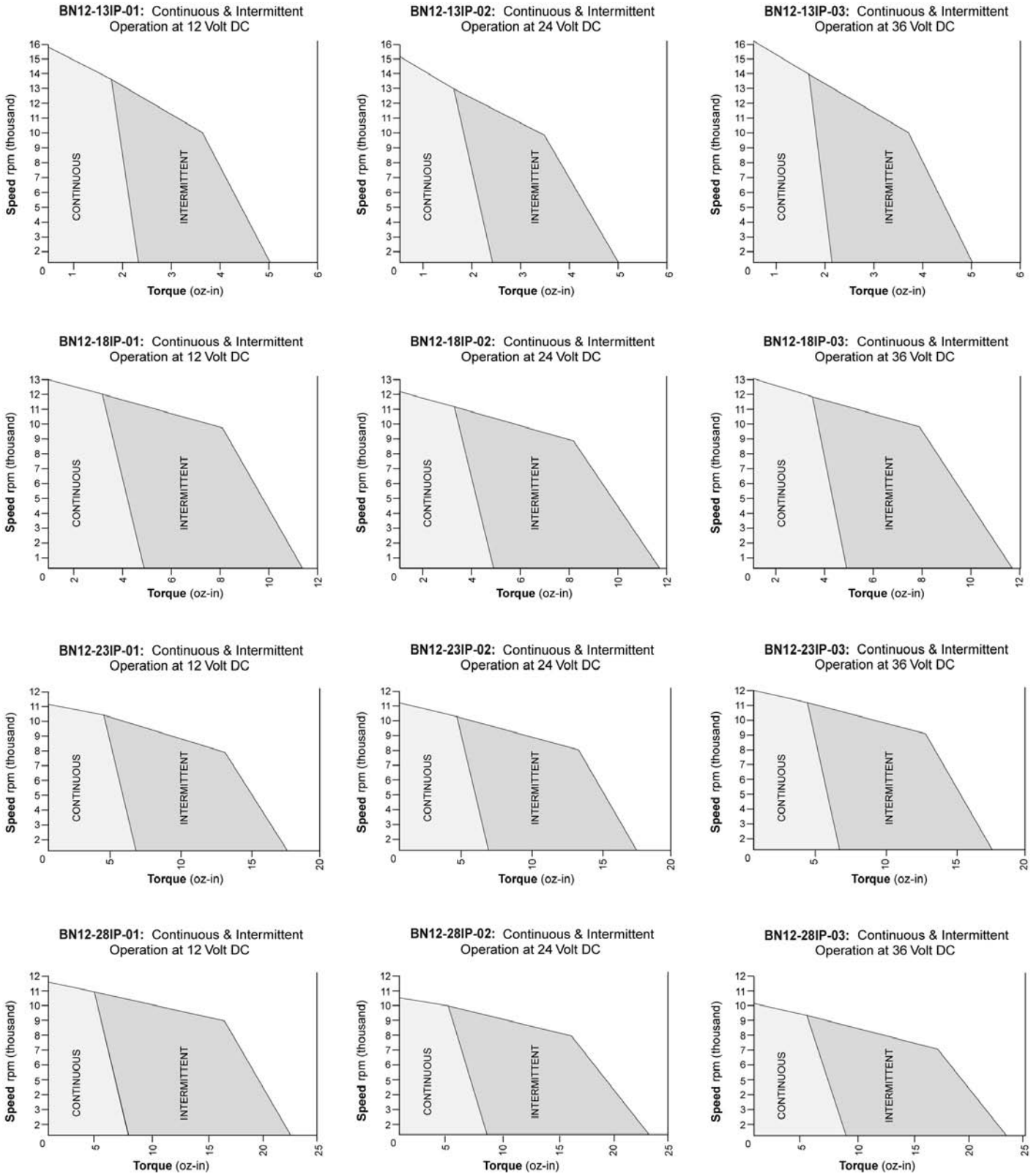
- |  |   |  |
|--|---|--|
| <input checked="" type="checkbox"/> <b>TERMINATION</b> | <input checked="" type="checkbox"/> <b>FEEDBACK OPTIONS</b> | <input checked="" type="checkbox"/> <b>OTHER OPTIONS</b> |
| L – Leads (std)  | H – Hall Effect (std)                                       | D – Drive  |
| C – Connector  |   | G – Gearhead   |
| M – MS connector                                       |   |  |

### BN12 IP Typical Outline



# Brushless Motors

## BN12 IP Performance Curves



**Note:** Intermittent operation is based on a 20% duty cycle of one minute on, four minutes off. Please contact the factory regarding the duty cycle of your application.