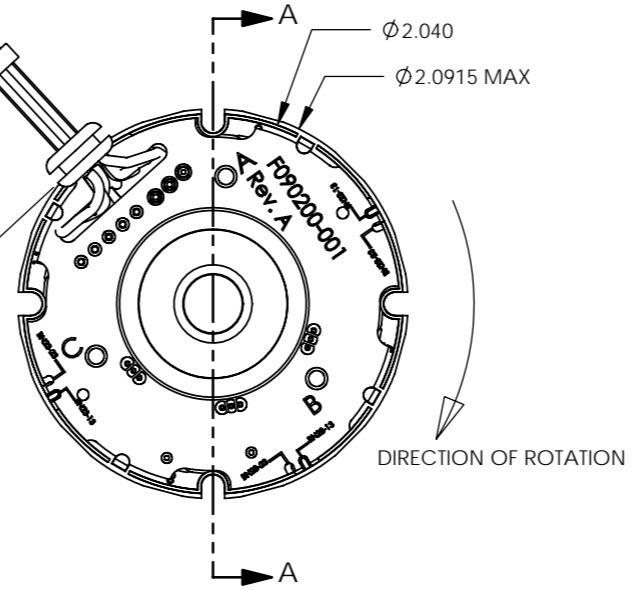
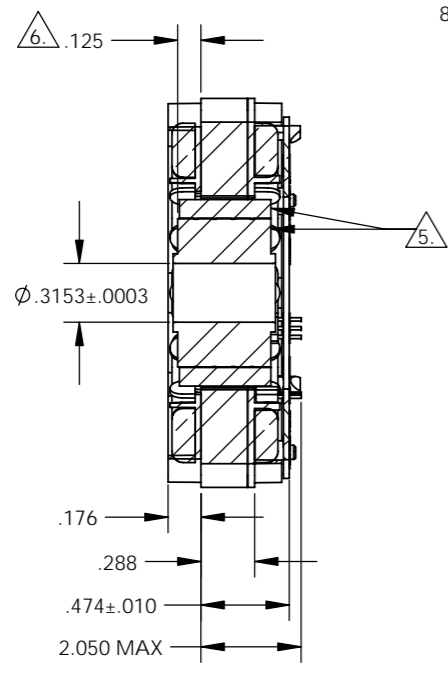
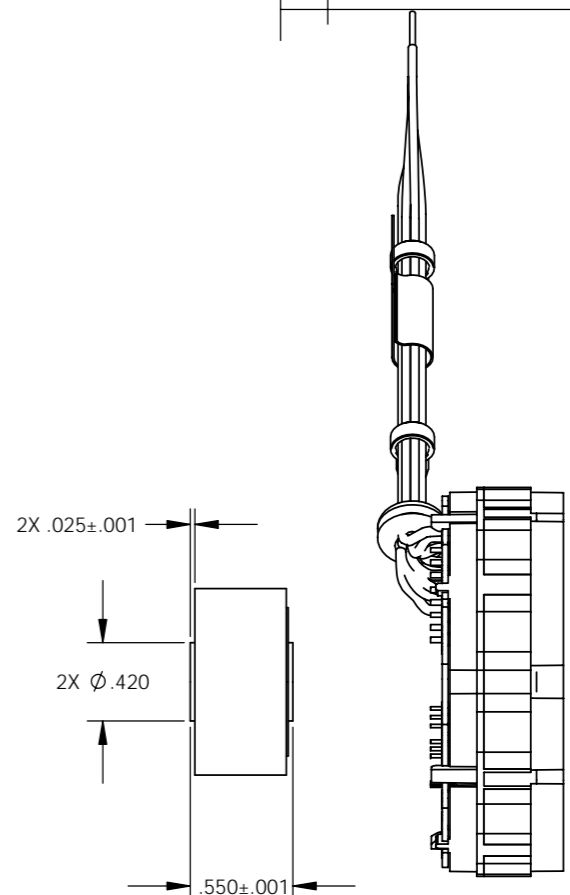
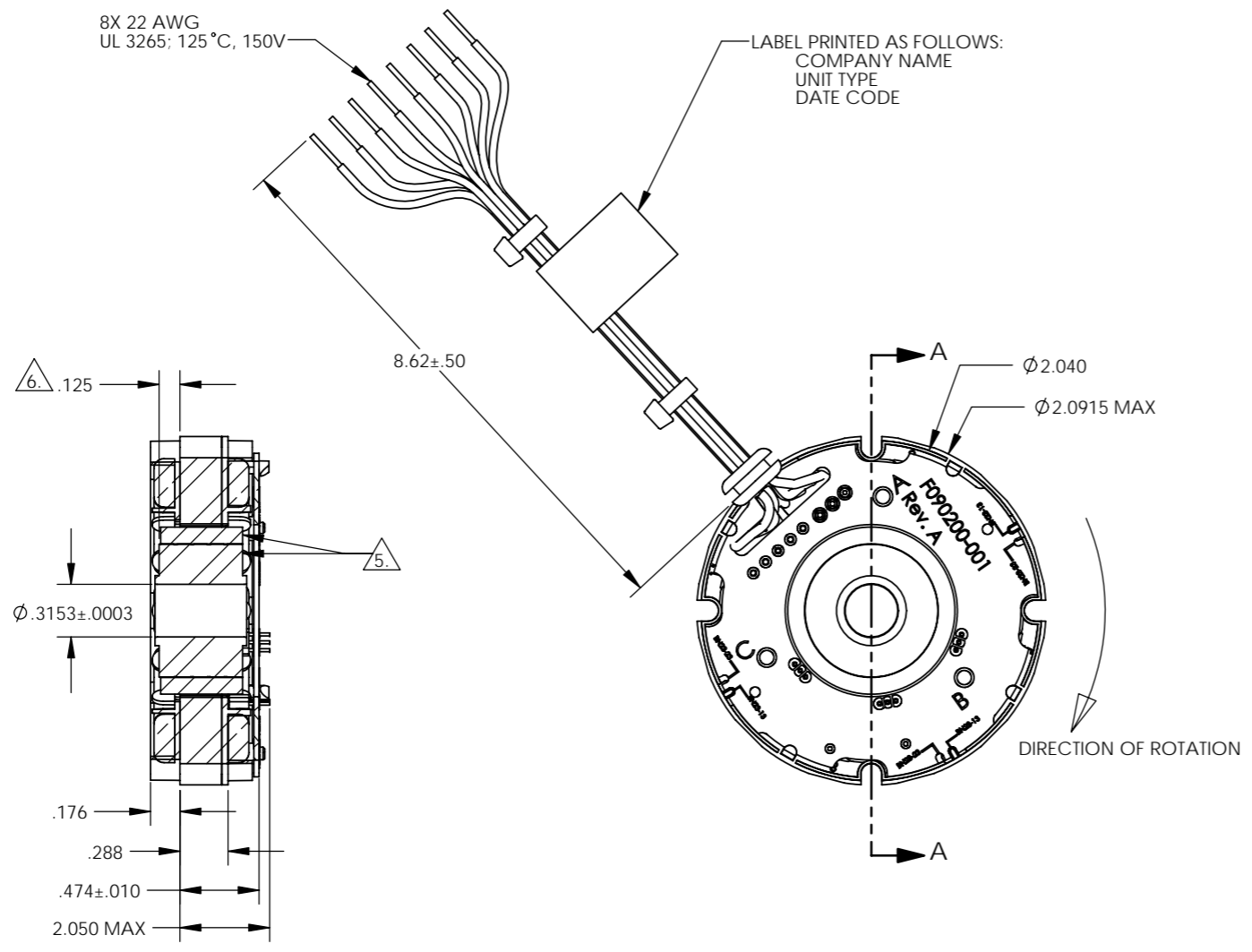


REVISIONS				
ZONE	REV.	DESCRIPTION	DATE	APPROVED
	A	NEW DRAWING/NTD 10174		



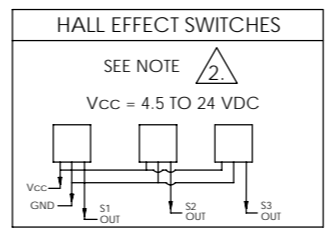
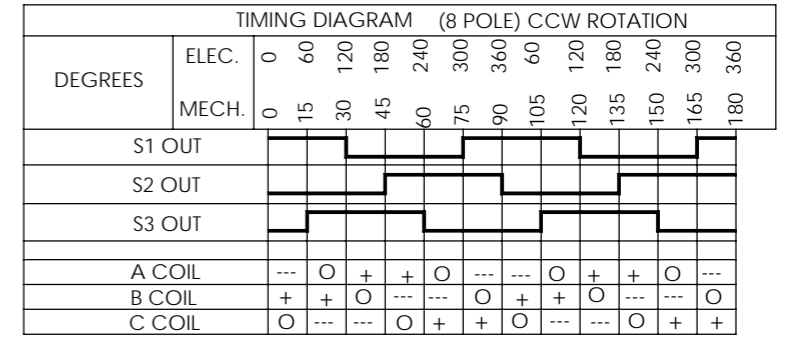
NOTES UNLESS OTHERWISE SPECIFIED:

1. INTERPRET DRAWING PER ASME Y14.100.
2. OPEN COLLECTOR OUTPUTS, USE PULL UP RESISTORS BETWEEN V_{CC} AND OUTPUTS.
3. TESTED AS A MOTOR ASSEMBLY MOUNTED TO 6" X 6" X 1/4" ALUMINUM PLATE, STILL AIR.
4. MAXIMUM WINDING TEMPERATURE OF 155°C.
5. MAGNET RING AND ROTOR CORE: FLUSH ±.002 ON THIS SIDE.
6. RECOMENDED ROTOR CORE TO STACK MOUNTING DIMENSION.

PERFORMANCE AT 25°C

PARAMETER	SYMBOL	UNITS	TOLERANCE	VALUE
TERMINAL VOLTAGE	V	VOLTS DC	NOMINAL	48
PEAK TORQUE	T _P	OZ-IN	MAXIMUM	35
CONTINUOUS STALL TORQUE	T _C ¹	OZ-IN	MAXIMUM	14.2
NO LOAD SPEED	S _{NL}	RPM	NOMINAL	12300
RATED SPEED	S _R	RPM		9190
RATED TORQUE		OZ-IN	MAXIMUM	12.1
RATED CURRENT		AMPS		2.38
RATED POWER		WATTS		82
TORQUE SENSITIVITY	K _T	OZ-IN/AMP	±10%	5.18
BEMF CONSTANT	K _E	VOLTS/KRPM	±10%	3.83
TERMINAL RESISTANCE	R _M	OHMS	±12%	1.890
TERMINAL INDUCTANCE	L _M	mH	±30%	1.530
MOTOR CONSTANT	K _M	OZ-IN/√ WATTS	NOMINAL	3.77
SPEED TORQUE GRADIENT		RPM/OZ-IN		257
MECHANICAL TIME CONSTANT		msec		5.10
ELECTRICAL TIME CONSTANT		msec		0.81
THERMAL RESISTIVITY		°C/WATT		3.44

TERMINATION TABLE	
COLOR	CONNECTION
VIOLET	A COIL
BLACK	B COIL
GREEN	C COIL
YELLOW	V _{CC}
GREY	GROUND
BROWN	S1 OUT
BLUE	S2 OUT
WHITE	S3 OUT



APPROVALS		DATE
DRAWN	R. PACE	1/31/06
CHECKED	R. MARTIN	2/10/06
ENGR	D. THOMPSON	2/10/06
RELEASED	R. MARTIN	2/14/06
MFG ENGR	L. FORRISTER	2/13/06
SHOP ENGR		
QA	B. LITTLE	2/10/06

MOOG
COMPONENTS GROUP

TITLE
BRUSHLESS D.C. MOTOR
OUTLINE

SIZE C CAGE CODE 4H618 DWG. NO. BN23-13ZMG-03LH

SCALE 1.5:1 CAD FILE BN23-13ZMG-03LH SHEET 1 OF 1