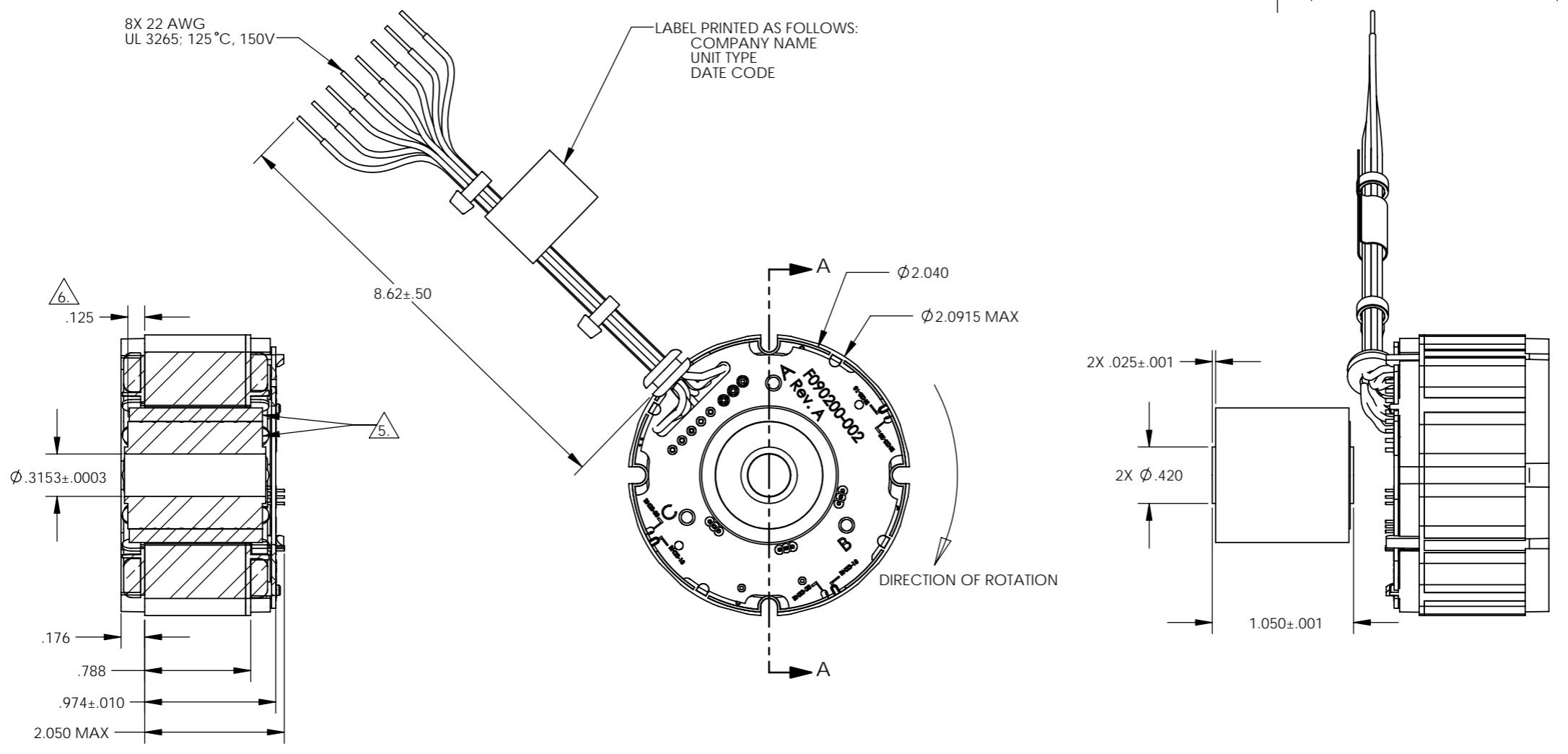


REVISIONS				
ZONE	REV.	DESCRIPTION	DATE	APPROVED
	A	NEW DRAWING/NTD 10176		

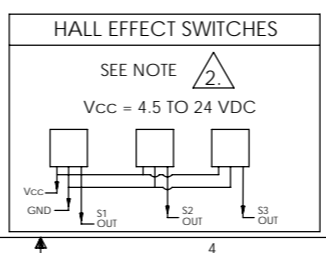
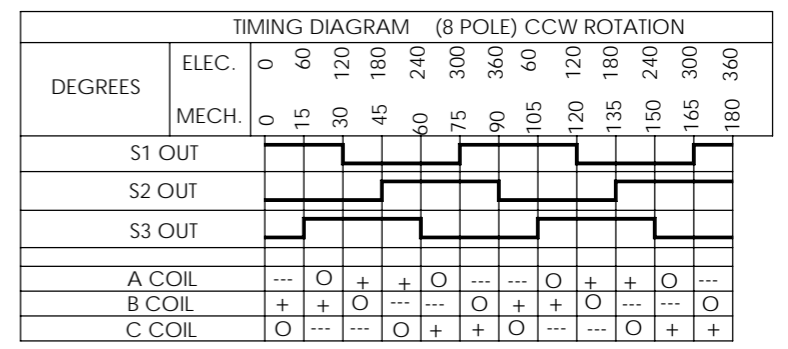


NOTES UNLESS OTHERWISE SPECIFIED:

1. INTERPRET DRAWING PER ASME Y14.100.
2. OPEN COLLECTOR OUTPUTS, USE PULL UP RESISTORS BETWEEN V<sub>CC</sub> AND OUTPUTS.
3. TESTED AS A MOTOR ASSEMBLY MOUNTED TO 6" X 6" X 1/4" ALUMINUM PLATE, STILL AIR.
4. MAXIMUM WINDING TEMPERATURE OF 155 °C.
5. MAGNET RING AND ROTOR CORE: FLUSH ±.002 ON THIS SIDE.
6. RECOMENDED ROTOR CORE TO STACK MOUNTING DIMENSION.

PERFORMANCE AT 25°C				
PARAMETER	SYMBOL	UNITS	TOLERANCE	VALUE
TERMINAL VOLTAGE	V	VOLTS DC	NOMINAL	36
PEAK TORQUE	T <sub>P</sub>	OZ-IN	MAXIMUM	88
CONTINUOUS STALL TORQUE	T <sub>C</sub> <sup>1</sup>	OZ-IN	MAXIMUM	31.4
NO LOAD SPEED	S <sub>NL</sub>	RPM	NOMINAL	9700
RATED SPEED	S <sub>R</sub>	RPM		7000
RATED TORQUE		OZ-IN	MAXIMUM	29.8
RATED CURRENT		AMPS		5.43
RATED POWER		WATTS		154
TORQUE SENSITIVITY	K <sub>T</sub>	OZ-IN/AMP	±10%	4.90
BEMF CONSTANT	K <sub>E</sub>	VOLTS/KRPM	±10%	3.62
TERMINAL RESISTANCE	R <sub>M</sub>	OHMS	±12%	0.507
TERMINAL INDUCTANCE	L <sub>M</sub>	mH	±30%	0.580
MOTOR CONSTANT	K <sub>M</sub>	OZ-IN/? WATTS	NOMINAL	6.88
SPEED TORQUE GRADIENT		RPM/OZ-IN		90.6
MECHANICAL TIME CONSTANT		msec		3.00
ELECTRICAL TIME CONSTANT		msec		1.14
THERMAL RESISTIVITY		°C/WATT		2.67

TERMINATION TABLE	
COLOR	CONNECTION
VIOLET	A COIL
BLACK	B COIL
GREEN	C COIL
YELLOW	V <sub>CC</sub>
GREY	GROUND
BROWN	S1 OUT
BLUE	S2 OUT
WHITE	S3 OUT



UNLESS OTHERWISE SPECIFIED DIMENSIONS ARE IN INCHES		CAD GENERATED DRAWING, DO NOT MANUALLY UPDATE	
TOLERANCES ARE:		APPROVALS	
DECIMALS ±.010	ANGLES ±0°30'	DRAWN R. PACE	DATE 1/31/06
XXX ±.005	FRACTIONS ±1/64	CHECKED R. MARTIN	DATE 2/10/06
XXXX ±.0005		ENGR D. THOMPSON	DATE 2/10/06
DO NOT SCALE DRAWING		RELEASED R. MARTIN	DATE 2/14/06
MATERIAL		MFG ENGR L. FORRISTER	DATE 2/13/06
FINISH		SHOP ENGR	
		QA B. LITTLE	DATE 2/10/06

**MOOG**  
COMPONENTS GROUP

TITLE  
**BRUSHLESS D.C. MOTOR**  
**OUTLINE**

SIZE C	CAGE CODE 4H618	DWG NO. BN23-18ZMG-02LH
SCALE 1.5:1	CAD FILE BN23-18ZMG-02LH	SHEET 1 OF 1