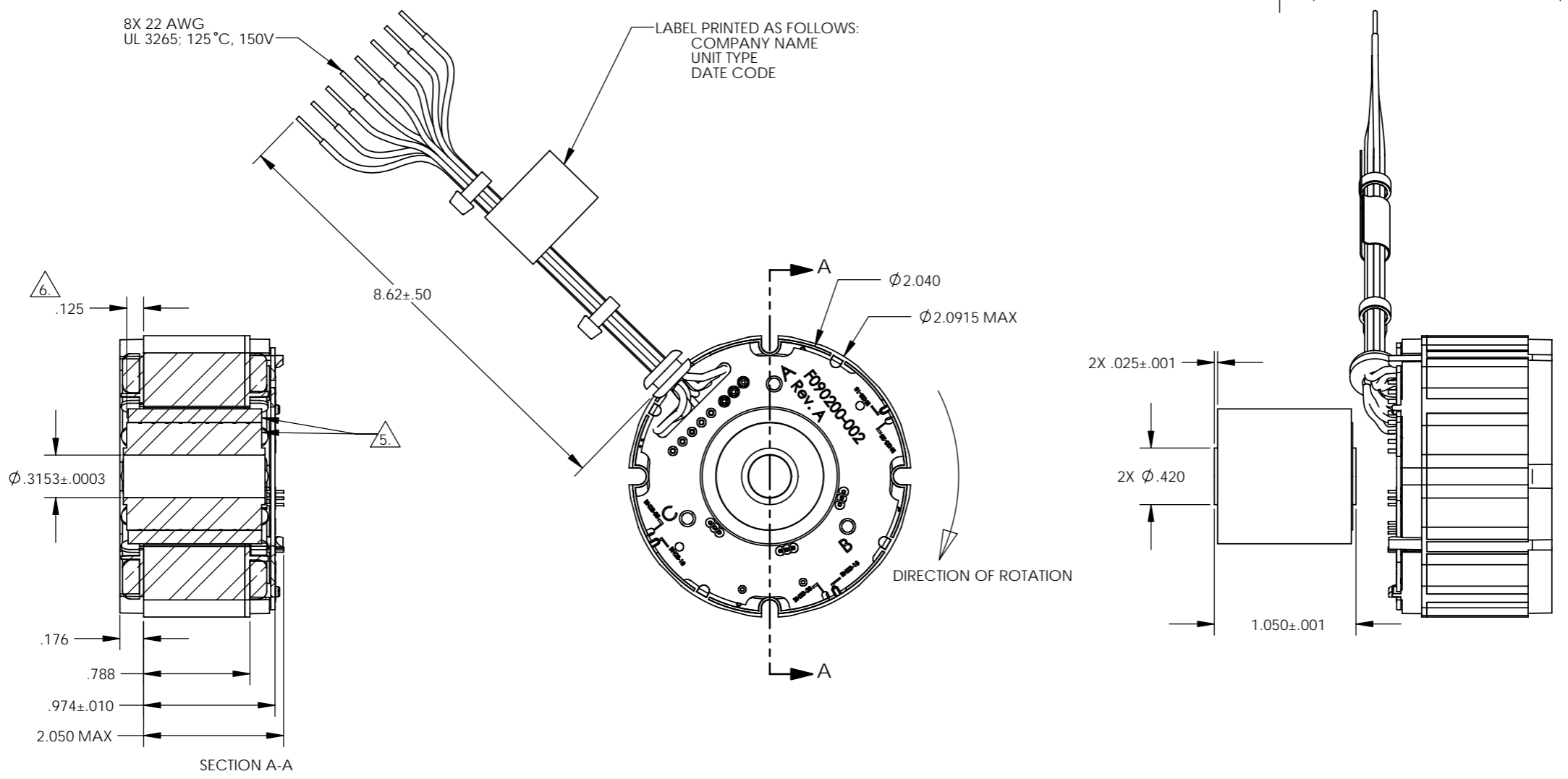


REVISIONS				
ZONE	REV.	DESCRIPTION	DATE	APPROVED
	A	NEW DRAWING/NTD 10177		

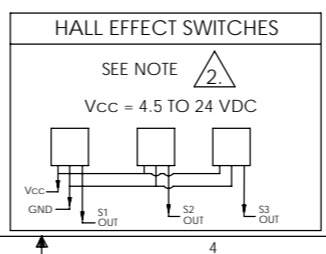
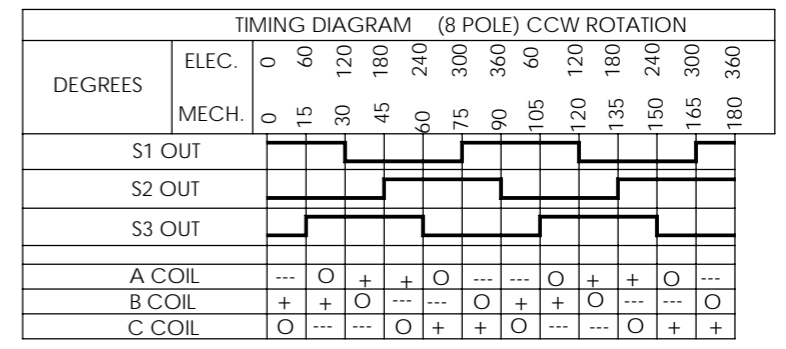


NOTES UNLESS OTHERWISE SPECIFIED:

1. INTERPRET DRAWING PER ASME Y14.100.
2. OPEN COLLECTOR OUTPUTS, USE PULL UP RESISTORS BETWEEN V_{CC} AND OUTPUTS.
3. TESTED AS A MOTOR ASSEMBLY MOUNTED TO 6" X 6" X 1/4" ALUMINUM PLATE, STILL AIR.
4. MAXIMUM WINDING TEMPERATURE OF 155°C.
5. MAGNET RING AND ROTOR CORE: FLUSH ±.002 ON THIS SIDE.
6. RECOMENDED ROTOR CORE TO STACK MOUNTING DIMENSION.

PERFORMANCE AT 25°C				
PARAMETER	SYMBOL	UNITS	TOLERANCE	VALUE
TERMINAL VOLTAGE	V	VOLTS DC	NOMINAL	48
PEAK TORQUE	T _P	OZ-IN	MAXIMUM	88
CONTINUOUS STALL TORQUE	T _C ¹	OZ-IN	MAXIMUM	35.2
NO LOAD SPEED	S _{NL}	RPM	NOMINAL	10200
RATED SPEED	S _R	RPM		7130
RATED TORQUE		OZ-IN	MAXIMUM	32.9
RATED CURRENT		AMPS		4.88
RATED POWER		WATTS		174
TORQUE SENSITIVITY	K _T	OZ-IN/AMP	±10%	6.25
BEMF CONSTANT	K _E	VOLTS/KRPM	±10%	4.62
TERMINAL RESISTANCE	R _M	OHMS	±12%	0.800
TERMINAL INDUCTANCE	L _M	mH	±30%	0.930
MOTOR CONSTANT	K _M	OZ-IN/? WATTS	NOMINAL	6.99
SPEED TORQUE GRADIENT		RPM/OZ-IN		93.30
MECHANICAL TIME CONSTANT		msec		2.90
ELECTRICAL TIME CONSTANT		msec		1.16
THERMAL RESISTIVITY		°C/WATT		1.81

TERMINATION TABLE	
COLOR	CONNECTION
VIOLET	A COIL
BLACK	B COIL
GREEN	C COIL
YELLOW	V _{CC}
GREY	GROUND
BROWN	S1 OUT
BLUE	S2 OUT
WHITE	S3 OUT



UNLESS OTHERWISE SPECIFIED DIMENSIONS ARE IN INCHES TOLERANCES ARE: DECIMALS .XX ±.010 .XXX ±.005 .XXXX ±.0005 ANGLES ±0°30' FRACTIONS ±1/64		CAD GENERATED DRAWING, DO NOT MANUALLY UPDATE			
DO NOT SCALE DRAWING		APPROVALS			
MATERIAL		DRAWN R. PACE 1/31/06		BRUSHLESS D.C. MOTOR	
FINISH		CHECKED R. MARTIN 2/10/06		OUTLINE	
		ENGR D. THOMPSON 2/10/06		SIZE C CAGE CODE 4H618 DWG. NO. BN23-18ZMG-03LH	
		RELEASED R. MARTIN 2/14/06		SCALE 1.5:1 CAB. FILE BN23-18ZMG-03LH SHEET 1 OF 1	
		MFG ENGR L. FORRISTER 2/13/06			
		SHOP ENGR			
		QA B. LITTLE 2/10/06			