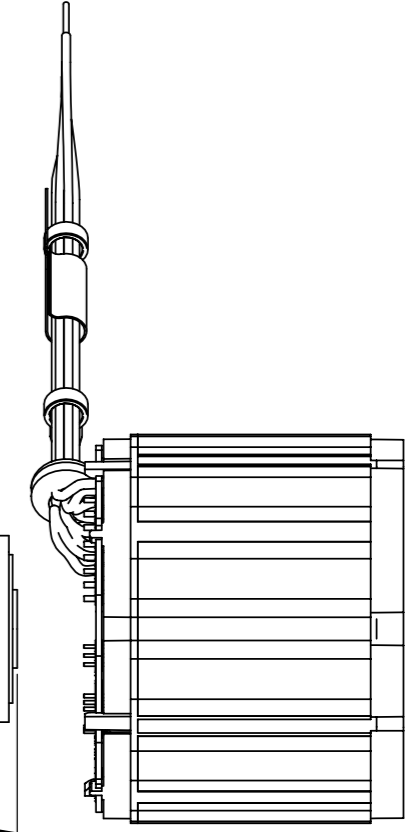
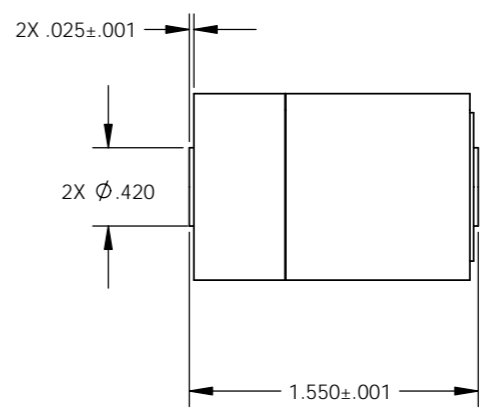
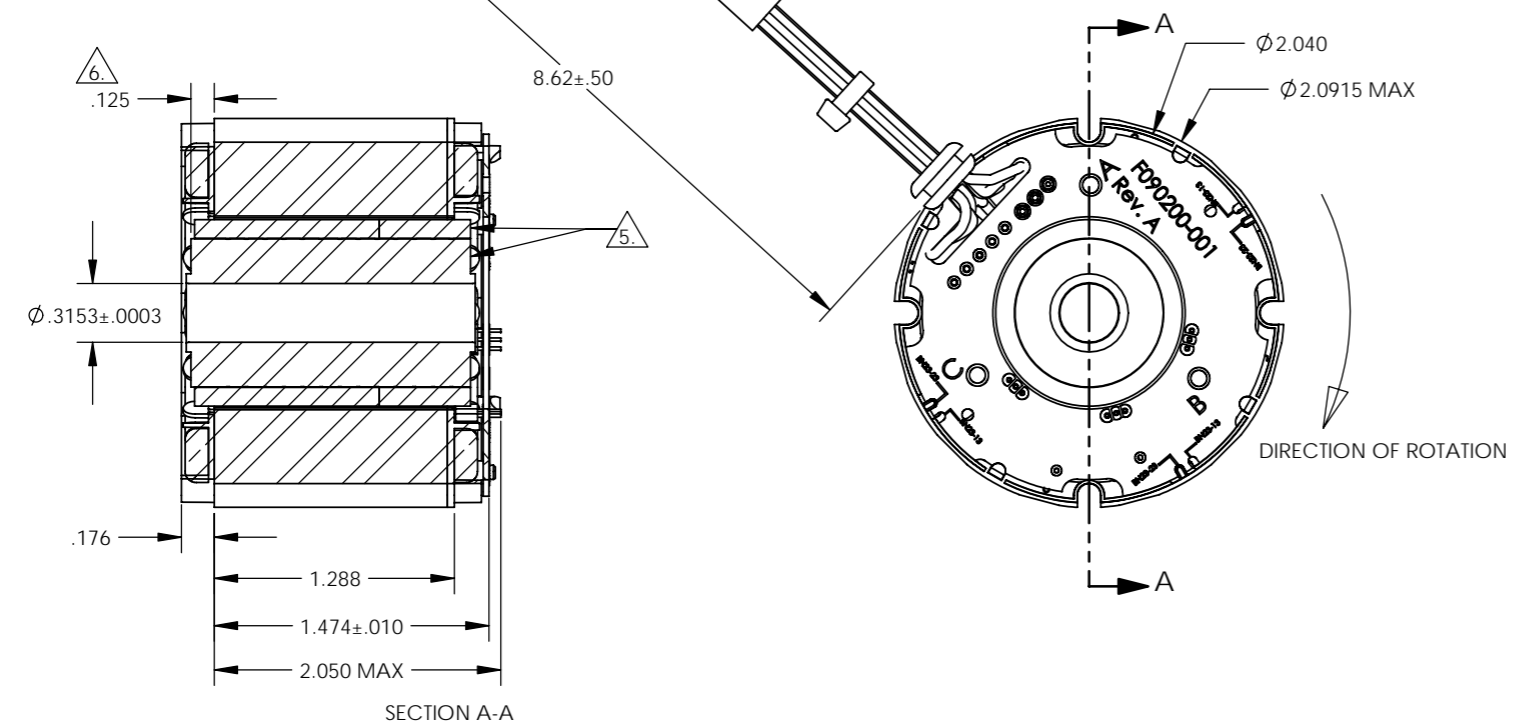


REVISIONS				
ZONE	REV.	DESCRIPTION	DATE	APPROVED
	A	NEW DRAWING/NTD 10180		

8X 22 AWG
UL 3265; 125°C, 150V

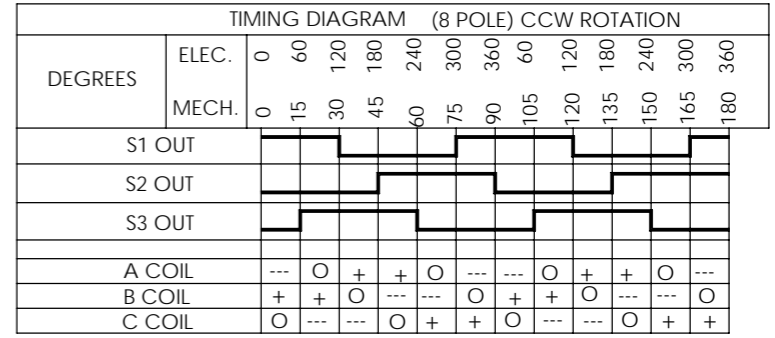
LABEL PRINTED AS FOLLOWS:
COMPANY NAME
UNIT TYPE
DATE CODE



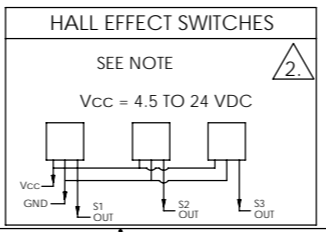
NOTES UNLESS OTHERWISE SPECIFIED:

1. INTERPRET DRAWING PER ASME Y14.100.
2. OPEN COLLECTOR OUTPUTS, USE PULL UP RESISTORS BETWEEN V_{CC} AND OUTPUTS.
3. TESTED AS A MOTOR ASSEMBLY MOUNTED TO 6" X 6" X 1/4" ALUMINUM PLATE, STILL AIR.
4. MAXIMUM WINDING TEMPERATURE OF 155°C.
5. MAGNET RING AND ROTOR CORE: FLUSH ±.002 ON THIS SIDE.
6. RECOMENDED ROTOR CORE TO STACK MOUNTING DIMENSION.

TERMINATION TABLE	
COLOR	CONNECTION
VIOLET	A COIL
BLACK	B COIL
GREEN	C COIL
YELLOW	V _{CC}
GREY	GROUND
BROWN	S1 OUT
BLUE	S2 OUT
WHITE	S3 OUT



PERFORMANCE AT 25°C				
PARAMETER	SYMBOL	UNITS	TOLERANCE	VALUE
TERMINAL VOLTAGE	V	VOLTS DC	NOMINAL	48
PEAK TORQUE	T _P	OZ-IN	MAXIMUM	143
CONTINUOUS STALL TORQUE	T _C ¹	OZ-IN	MAXIMUM	42.9
NO LOAD SPEED	S _{NL}	RPM	NOMINAL	8200
RATED SPEED	S _R	RPM		6250
RATED TORQUE		OZ-IN	MAXIMUM	41.8
RATED CURRENT		AMPS		5.00
RATED POWER		WATTS		193
TORQUE SENSITIVITY	K _T	OZ-IN/AMP	±10%	7.79
BEMF CONSTANT	K _E	VOLTS/KRPM	±10%	5.76
TERMINAL RESISTANCE	R _M	OHMS	±12%	0.715
TERMINAL INDUCTANCE	L _M	mH	±30%	0.900
MOTOR CONSTANT	K _M	OZ-IN/? WATTS	NOMINAL	9.21
SPEED TORQUE GRADIENT		RPM/OZ-IN		46.70
MECHANICAL TIME CONSTANT		msec		2.50
ELECTRICAL TIME CONSTANT		msec		1.26
THERMAL RESISTIVITY		°C/WATT		2.35



UNLESS OTHERWISE SPECIFIED DIMENSIONS ARE IN INCHES	CAD GENERATED DRAWING, DO NOT MANUALLY UPDATE	
	APPROVALS	DATE
DECIMALS .XXX ±.010	DRAWN R. PACE	1/31/06
ANGLES ±30°	CHECKED R. MARTIN	2/10/06
XXX ±.005 FRACTIONS ±1/64	ENGR D. THOMPSON	2/10/06
DO NOT SCALE DRAWING	RELEASED R. MARTIN	2/14/06
MATERIAL	MFG ENGR L. FORRISTER	2/13/06
FINISH	SHOP ENGR	
	QA B. LITTLE	2/10/06

MOOG COMPONENTS GROUP

TITLE: BRUSHLESS D.C. MOTOR OUTLINE

SIZE: C CAGE CODE: 4H618 DWG. NO.: BN23-23ZMG-03LH

SCALE: 1.5:1 CAD FILE: BN23-23ZMG-03LH SHEET 1 OF 1