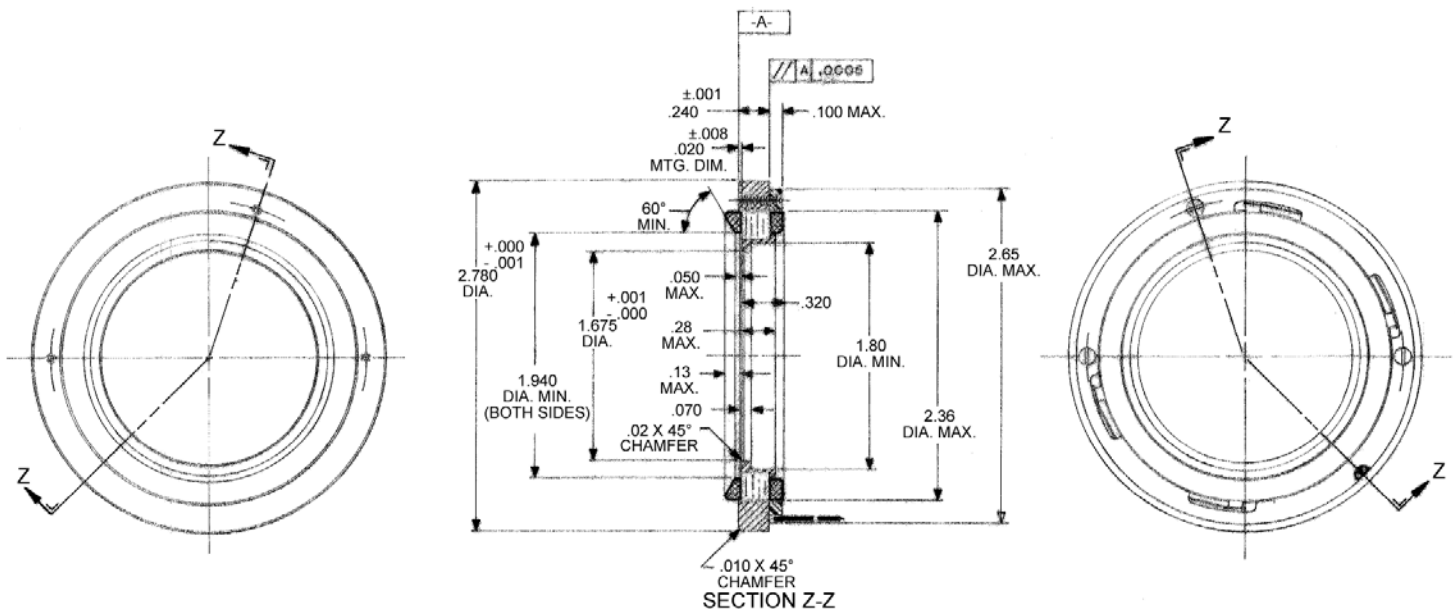


D-2780-B-1AEN SPECIFICATIONS @ 25°C

Size Constants	Value	Units
Peak Torque, T_P	14	oz-in
Motor Constant, K_M	4.05	oz-in/ \sqrt{W}
Number of Poles	10	
Weight	4	oz (nom)
Motor Inertia, J_M	5.00E-03	oz-in-s ²
Friction Torque, T_F	1.2	oz-in
Electrical Time Constant, τ_E	0.123	ms
Mechanical Time Constant, τ_M	43.12	ms
Temperature Rise, Housed TPR'	5.7	° C/W
Ripple Torque, T_R	6	max. avg. to peak (%)
Winding Constants	Value	Units
Torque Sensitivity, K_T	30.6	oz-in/amp
Back EMF, K_E	0.216	V per rad/s
Terminal Resistance, R_M	57	ohms (nom)
Terminal Inductance, L_M	7	mH (nom)
Voltage, Stalled at Peak Torque, V_P	26	volts
Amps at Peak Torque, I_P	0.46	amps

D-2780-B-1AEN Typical Outline Drawing



Dimensions are in inches