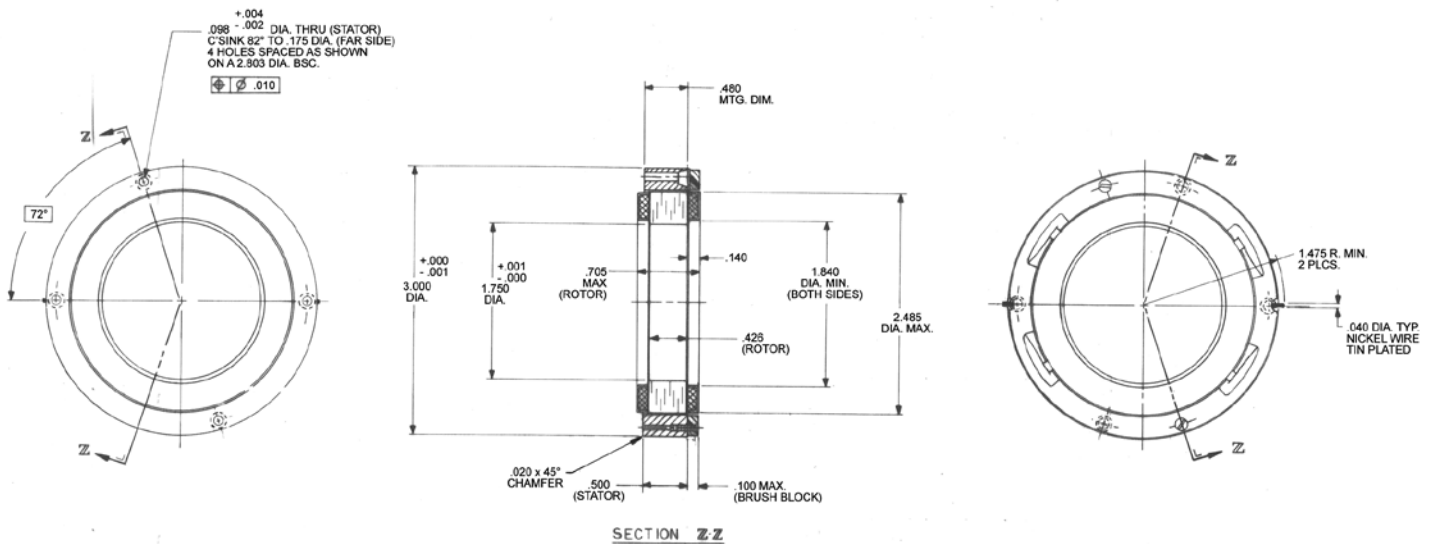


Brush Motors

D-3000-F-3T SPECIFICATIONS @ 25°C

Size Constants	Value	Units
Peak Torque, T_P	95	oz-in
Motor Constant, K_M	12.2	oz-in/ \sqrt{W}
Number of Poles	10	
Weight	9.7	oz (nom)
Motor Inertia, J_M	1.60E-02	oz-in-s ²
Friction Torque, T_F	2.5	oz-in
Electrical Time Constant, τ_E	0.622	ms
Mechanical Time Constant, τ_M	15.34	ms
Temperature Rise, Housed TPR'	6.5	° C/W
Ripple Torque, T_R	5	max. avg. to peak (%)
Winding Constants	Value	Units
Torque Sensitivity, K_T	28	oz-in/amp
Back EMF, K_E	0.198	V per rad/s
Terminal Resistance, R_M	5.3	ohms (nom)
Terminal Inductance, L_M	3.3	mH (nom)
Voltage, Stalled at Peak Torque, V_P	18	volts
Amps at Peak Torque, I_P	3.40	amps

D-3000-F-3T Typical Outline Drawing



Dimensions are in inches