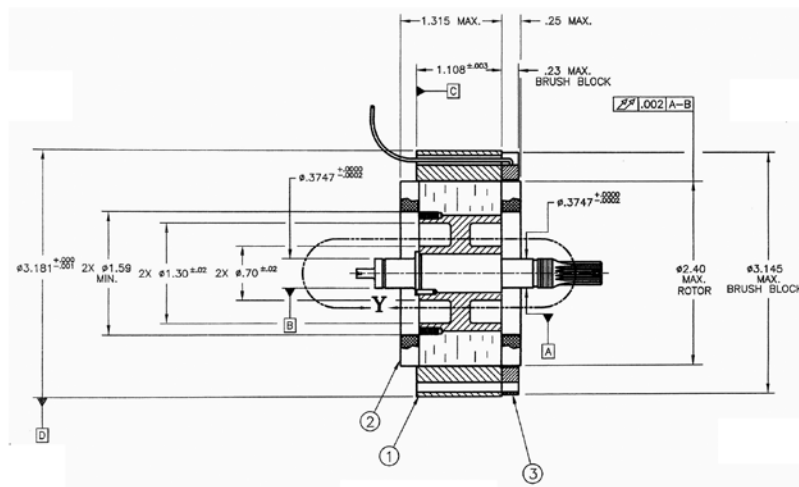
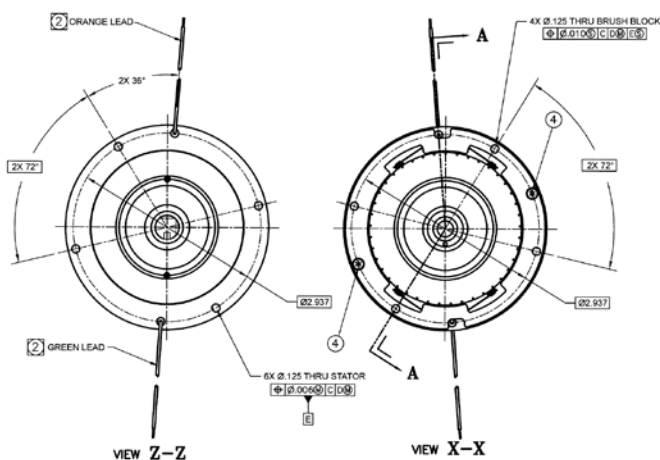


Brush Motors

D-3180-C-2A SPECIFICATIONS @ 25°C

Size Constants	Value	Units
Peak Torque, T_P	480	oz-in
Motor Constant, K_M	29.8	oz-in/ \sqrt{W}
Number of Poles	10	
Weight	36	oz (nom)
Motor Inertia, J_M	3.50E-02	oz-in-s ²
Friction Torque, T_F	10	oz-in
Electrical Time Constant, τ_E	0.923	ms
Mechanical Time Constant, τ_M	5.59	ms
Temperature Rise, Housed TPR'	5	° C/W
Ripple Torque, T_R	7	max. avg. to peak (%)
Winding Constants	Value	Units
Torque Sensitivity, K_T	48	oz-in/amp
Back EMF, K_E	0.339	V per rad/s
Terminal Resistance, R_M	2.60	ohms (nom)
Terminal Inductance, L_M	2.4	mH (nom)
Voltage, Stalled at Peak Torque, V_P	26	volts
Amps at Peak Torque, I_P	10	amps

D-3180-C-2A Typical Outline Drawing



Dimensions are in inches