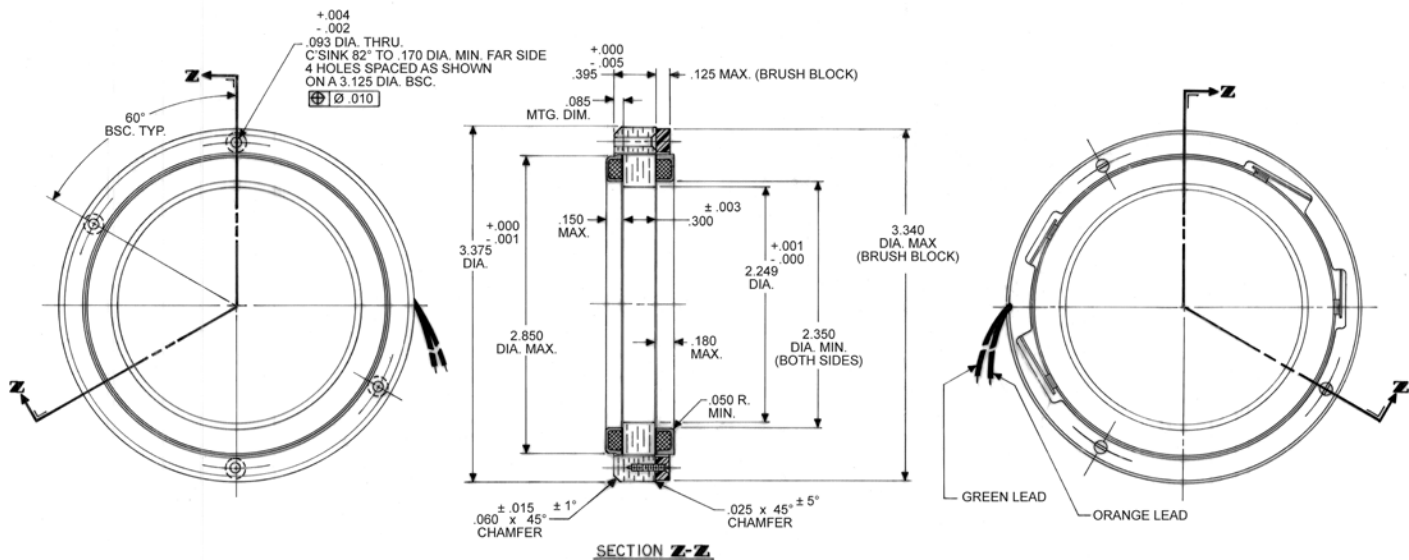


Brush Motors

D-3375-A-1 SPECIFICATIONS @ 25°C

Size Constants	Value	Units
Peak Torque, T_P	33	oz-in
Motor Constant, K_M	9.03	oz-in/ \sqrt{W}
Number of Poles	12	
Weight	8.5	oz (nom)
Motor Inertia, J_M	1.60E-02	oz-in-s ²
Friction Torque, T_F	2	oz-in
Electrical Time Constant, τ_E	0.243	ms
Mechanical Time Constant, τ_M	27.72	ms
Temperature Rise, Housed TPR'	6.2	° C/W
Ripple Torque, T_R	5	max. avg. to peak (%)
Winding Constants	Value	Units
Torque Sensitivity, K_T	41	oz-in/amp
Back EMF, K_E	0.290	V per rad/s
Terminal Resistance, R_M	20.6	ohms (nom)
Terminal Inductance, L_M	5	mH (nom)
Voltage, Stalled at Peak Torque, V_P	16.5	volts
Amps at Peak Torque, I_P	0.80	amps

D-3375-A-1 Typical Outline Drawing



Dimensions are in inches