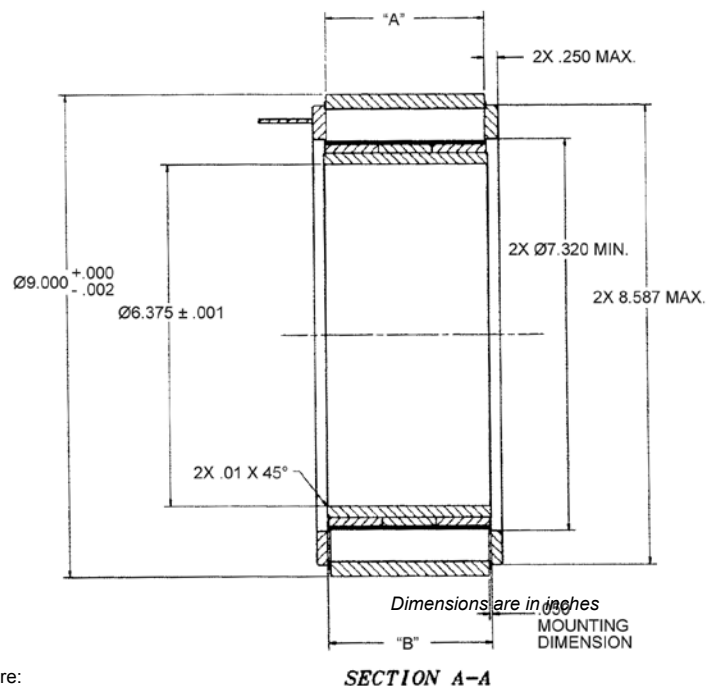
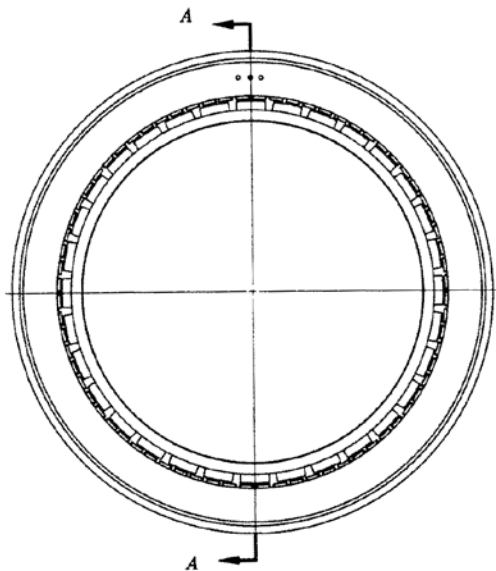


Brushless Torque Motors

DB-9000 SERIES SPECIFICATIONS @ 25°C

Part Number		DB-9000-G-2ES	DB-9000-H-2ES	DB-9000-I-2ES	DB-9000-J-2ES	DB-9000-K-2ES
Size Constants						
Peak Torque, T_p	oz-in	5102	10232	15338	25560	30665
Motor Constant, K_M	oz-in/ \sqrt{W}	176	304	405	568	636
Number of Poles		32	32	32	32	32
Number of Phases		3"Y"	3"Y"	3"Y"	3"Y"	3"Y"
Weight	oz (nom)	75	131	192	304	357
Motor Inertia, J_M	oz-in-s ²	0.518	1.01	1.50	2.47	2.96
Friction Torque, T_f	oz-in	53	112	171	289	348
Electrical Time Constant, τ_E	ms	1.24	1.94	2.35	2.76	2.93
Mechanical Time Constant, τ_M	ms	2.36	1.55	1.29	1.09	1.04
Temperature Rise, Housed TPR'	°C/W	1.3	0.99	0.79	0.57	0.50
Sensors		No	No	No	No	No
Winding Constants						
Torque Sensitivity, K_T	oz-in/amp	255	512	767	1278	1533
Back EMF, K_E	V per rad/s	1.80	3.61	5.42	9.03	10.8
Terminal Resistance, R_M	ohms (nom)	2.09	2.83	3.58	5.07	5.81
Terminal Inductance, L_M	mH (nom)	2.6	5.5	8.4	14	17
Voltage, Stalled at Peak Torque, V_p	volts	41.8	56.6	71.6	101	116
Amps at Peak Torque, I_p	amps	20	20	20	20	20

DB-9000 Series Typical Outline Drawing



Modular	"A"	"B"
	inches	inches
DB-9000-G-2ES	0.450	0.550
DB-9000-H-2ES	0.950	1.050
DB-9000-I-2ES	1.450	1.550
DB-9000-J-2ES	2.450	2.550
DB-9000-K-2ES	2.950	3.050

Tolerances are:
 Angles ± 0.5
 .XXX $\pm .005$
 .XX $\pm .01$
 .X $\pm .03$

Dimensions and tolerances are in accordance with ASME Y14.5 - 1994

Unless otherwise Specified
 Finish: E.S. 411
 For machined surfaces

Dimensions are in inches