

## Flange Adaptors

By: John Purdy  
Halifax Operations

### Definition:

Flange adaptors, also referred to as flange and cable covers, are machined parts which are used to adapt the ends of a Model 176 slip ring assembly to a hose or conduit within which the slip ring pigtails are contained.

Typically, the wire (and fiber) pigtails exiting each end of the Model 176 slip ring are not sealed at the exit point. To effectively seal the slip ring ends, the pigtail must be run in a sealed hose or conduit from the slip ring housing to another dry location, typically a sealed junction box. The flange adaptors facilitate the sealing of this hose to the slip ring ends, Figure 1.

### Options:

There are several common designs of flange adaptors. Both straight and angle flange are available in a variety of sizes. The flange adaptor designs are intended to adapt to a flexible hose, such as a Tygon tube, requiring a "hose barb" type fitting or a semi rigid conduit requiring a pipe thread (NPT) type fitting. Both of these designs have various diameters to accommodate pigtail bundles of various sizes. The most common configurations are shown in Figure 2.

Typically, a Model 176 slip ring is mounted in a LARS or TMS such that the outer housing of the slip ring rotates with the cable drum. To facilitate the mounting of the slip ring and sealing of the pigtails in this configuration, a straight flange adaptor is mounted to the can end (rotating side, brush side) of the slip ring

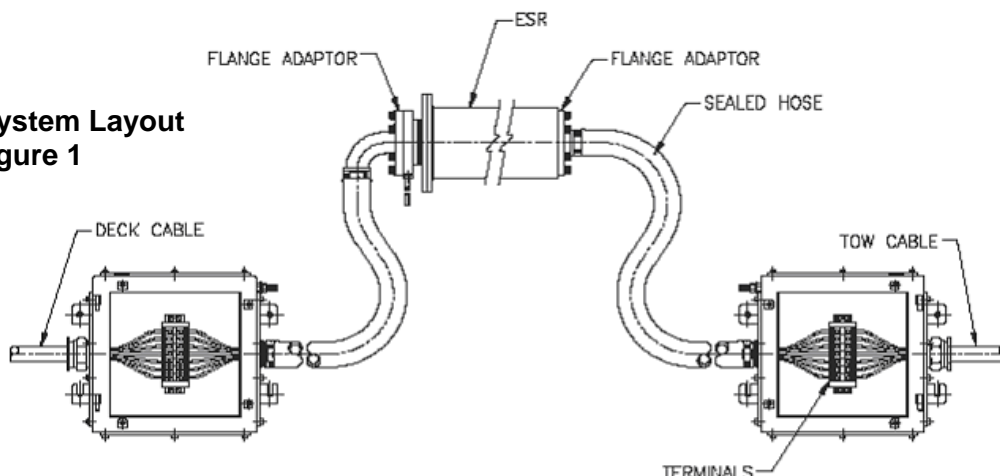
and a right angle flange adaptor is mounted to the shaft end (stationary end, ring side) of the slip ring. Figure 1 shows a typical installation configuration. (The interfaces are identical allowing the flange adaptors to be attached to either end of the slip ring as necessary to accommodate alternate slip ring mounting configurations.)

Typically, a Model 176 slip ring is mounted in a LARS or TMS such that the outer housing of the slip ring rotates with the cable drum. To facilitate the mounting of the slip ring and sealing of the pigtails in this configuration, a straight flange adaptor is mounted to the can end (rotating side, brush side) of the slip ring and a right angle flange adaptor is mounted to the shaft end (stationary end, ring side) of the slip ring. Figure 1 shows a typical installation configuration. (The interfaces are identical allowing the flange adaptors to be attached to either end of the slip ring as necessary to accommodate alternate slip ring mounting configurations.)

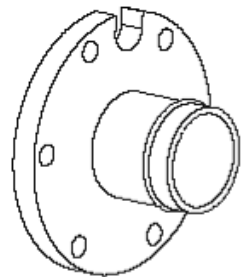
### Specification / Default:

When ordering a Model 176 slip ring configuration which has not been previously configured, it is necessary to specify the type of flange adaptors required on each end. In the event the type is not specified, the most common types will be provided, P / N 119-0601 on the can end and P / N 119-0606 on the shaft end. The size (diameter) of the flange adaptor will be the minimum diameter necessary to properly accommodate the wire bundle exiting the slip ring.

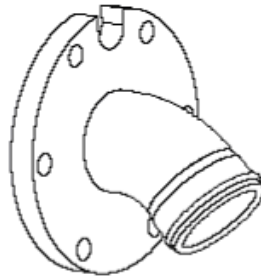
**Typical System Layout**  
**Figure 1**



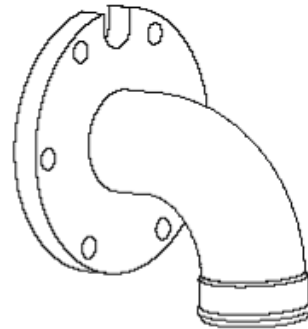
**Typical Flange Adaptor Types**  
**Figure 2**



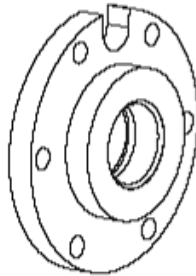
119-0601-XX  
STRAIGHT, HOSE BARB



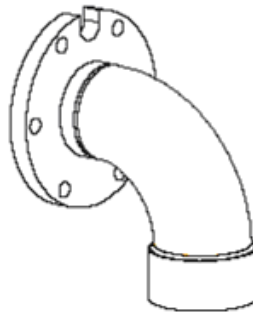
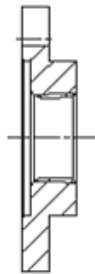
119-0616-XX  
45°, HOSE BARB



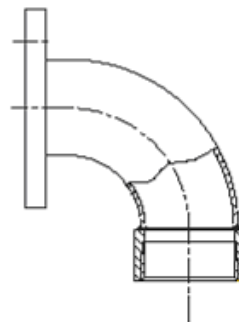
119-0606-XX  
RIGHT ANGLE, HOSE BARB



119-0605-XX  
STRAIGHT, NPT FEMALE



119-0612-XX  
RIGHT ANGLE, NPT FEMALE



**Notes:**

Flange adaptor shown pictorially only.  
For complete interface dimensions, contact factory.  
Other types and sizes are available, contact factory with requirements.

Specifications and information are subject  
to change without prior notice.

©2008 Moog Inc. 03/08