

MOOG

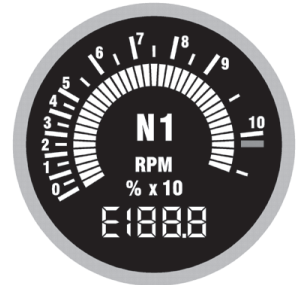
# *Solid State Display Technology For Raytheon King Air*

## *High-Tech Presentation Plus Improved Reliability*

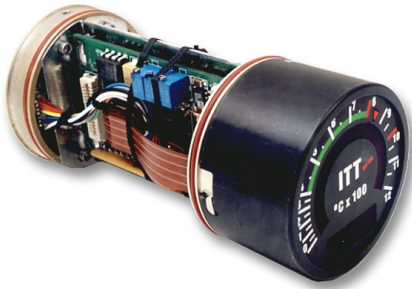
*Engine ITT, Torque, Prop Tach,  
Engine Turbine Tach, Fuel Flow,  
Oil Temp/Oil Pressure.*

### **Features and Options:**

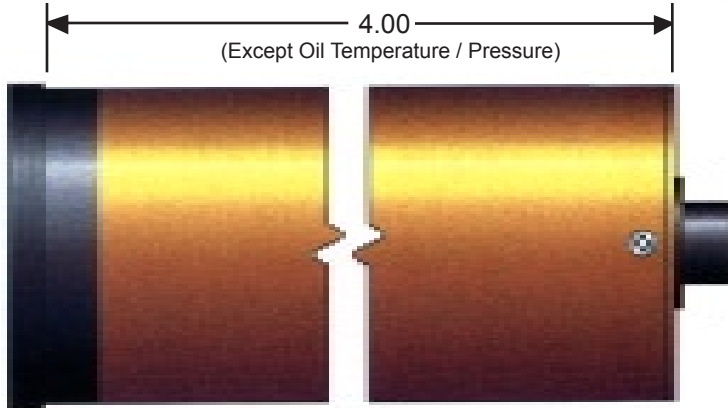
- **No Moving Parts** to wear out - advanced microprocessor circuitry and liquid crystal technologies for extremely low maintenance and long life.
- **Easy Replacement** of electromechanical indicators - new solid state design uses the same envelope of your old, unreliable unit.
- **Exceptional Design Flexibility** for interface and dial format adaptability - easily matched to the current configuration.
- **Outstanding Performance** in all conditions - readable, light-weight, and reliable across temperature ranges and other tough environments.
- **Built-in Test (BIT)** All segments of the digital display and bargraph are readable for the first three seconds during power-up.
- **Exceedance Monitoring** of engine conditions. Instruments record magnitude and duration of exceedance of engine ratings.



MOOG  
COMPONENTS GROUP



Maintaining the electromechanical engine indicators in your aircraft may be costing you time and money and causing you aggravation. You can now take advantage of solid state reliability by installing EASI™ indicators. Our indicators provide an economical upgrade of your instrument panel to today's digital look. The LCD indicators are designed, developed and produced by Moog Components Group. With over 35 years of experience in avionics, you can be confident of the highest quality product, service and support.



### Typical Parameters\*

Indicator	Engine ITT	Torque	Engine Prop	Engine Tach	Fuel Flow	Oil Temp/ Pressure
Model Number	942	942	942	942	942	942
Input Power	28 VDC	26 VDC	28 VDC	28 VDC	26 VDC	26 VDC
Input Signal**	K Thermocouple	Synchro	Tach Generator	Tach Generator	Synchro	Resistive Bulb
Lighting (Florescent)	5 or 28 VDC	5 or 28 VDC	5 or 28 VDC	5 or 28 VDC	5 or 28 VDC	5 or 28 VDC
Weight	0.60 Lbs	0.60 Lbs	0.60 Lbs	0.60 Lbs	0.60 Lbs	0.90 Lbs
Bezel Color	Black	Black	Black	Black	Black	Black
Dimensions	2" Dia x 4"	2" Dia x 4"	2" Dia x 4"	2" Dia x 4"	2" Dia x 4"	2" Dia x 7"
Mating Conn.**	MS3126F12-10S	MS3126F12-10SZ	MS3126F12-10SX	MS3126F12-10SW	MS3126F12-10SY	MS3126F14-15S
Viewing Angle	±60°	±60°	±60°	±60°	±60°	±60°
Temp. Range	-40° to +55° C	-40° to +55° C	-40° to +55° C	-40° to +55° C	-40° to +55° C	-40° to +55° C
Reliability***	50,000 Hrs.	50,000 Hrs.	50,000 Hrs.	50,000 Hrs.	50,000 Hrs.	50,000 Hrs.

\*Dial appearance may vary per aircraft model  
 \*\* Adaptable per aircraft type  
 \*\*\* Demonstrated on similar models  
 Specifications and information are subject to change without prior notice.  
 ©Copyright 2005, Moog Components Group MSG20001 10/05

For more information, please visit our web site at [www.moog.com/components](http://www.moog.com/components) or email us at: [mcg@moog.com](mailto:mcg@moog.com)

