

# Fiber Optic Multiplexer Modules

## Mini 4 Video / Data Multiplexer

*Mini 4 Fiber Optic Multiplexer, Input or Output*

### Description

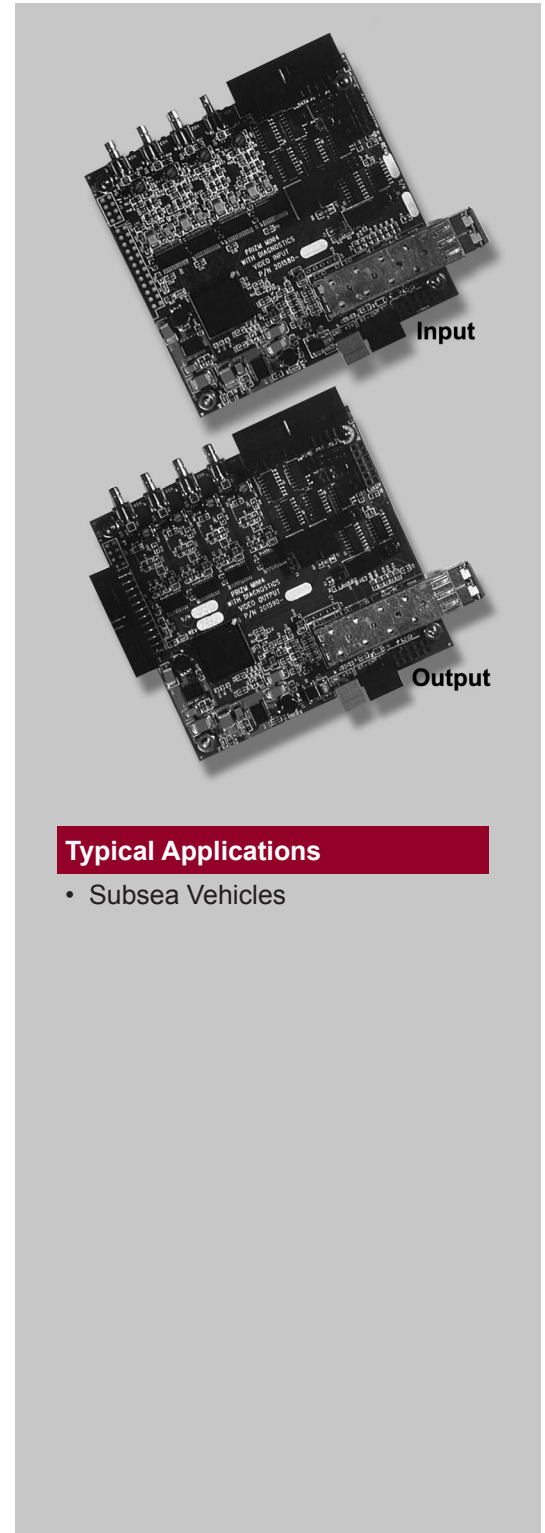
The Prizm™ Mini 4 combines the best of our proven MiniMux 2 and Video 3 technologies to provide an elegant solution for high density applications. The unit is a fully integrated fiber optic digital multiplexer / modem.

### Features

- Fully transparent video and data link
- Four 10 bit video channel
- Two isolated RS-485 / 422 channels
- Four isolated RS-232 / digital I / O channels
- Full system diagnostics with GUI output
- Designed for operation in harsh environments (-20° to +65° Celsius)
- Custom configurations available
- Daughterboard expansion available including 4-port gigabit ethernet

### Benefits

- This small lightweight form factor is based on automated surface mount technology. Our highest I / O density multiplexer yet.
- Custom daughtercards provide maximum interface flexibility and scalability.
- The Mini 4 is available in single and dual fiber solutions, with singlemode or multimode fiber. Daughter cards add Ethernet and additional data and sonar channels.



### Typical Applications

- Subsea Vehicles

**PRIZM™**

**MOOG**  
COMPONENTS GROUP

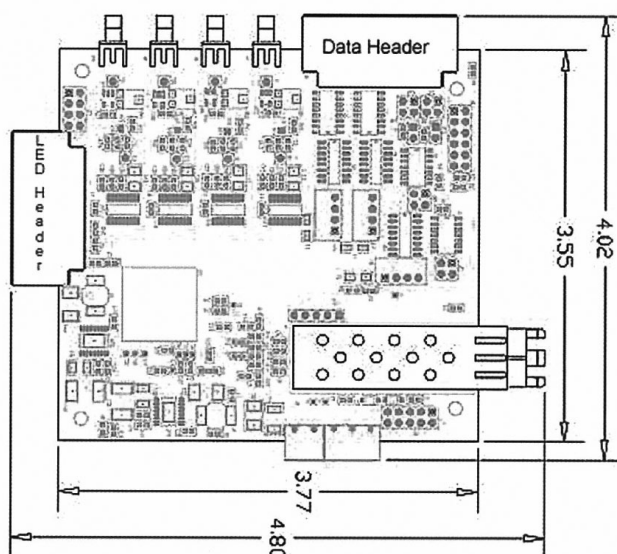
# Fiber Optic Multiplexer Module

## Specifications

Power Supply	
Voltage	+5 VDC
Power	3.75 watts
Optical	
Fiber	Singlemode or multimode
Link Rate	1.25 Gbps
Optical Budget	1550 nm - 26 db typical
Video / Data (Four Input Channels)	
Format	NTSC / PAL compliant
Quantization	10 bits @ 16.67 Mhz sampling
Four Output Channels	
Format	NTSC / PAL compliant
Quantization	10 bits @ 16.67 Mhz sampling

Interface Connectors	
Optical	LC or ST
Video	Mini SMB
Data	24 - pin data header
Environmental	
Operating Temperature	-20° to +65° Celsius
Storage Temperature	-40° to +85° Celsius
Relative Humidity	Up to 90% non-condensing
Daughterboards	
	Ethernet 10 /100 / 1000 Mbps
	Serial data
	Custom configurations available
Ordering	
Part Number	201580 Input Board
	201590 Output Board

## Mechanical Information



Dimensions in inches.

**24 / 7 Technical Customer Support**  
**Hotline: 610-605-6101**

Specifications and information are subject to change without prior notice.  
©2009 Moog Inc. MS3005 07/09