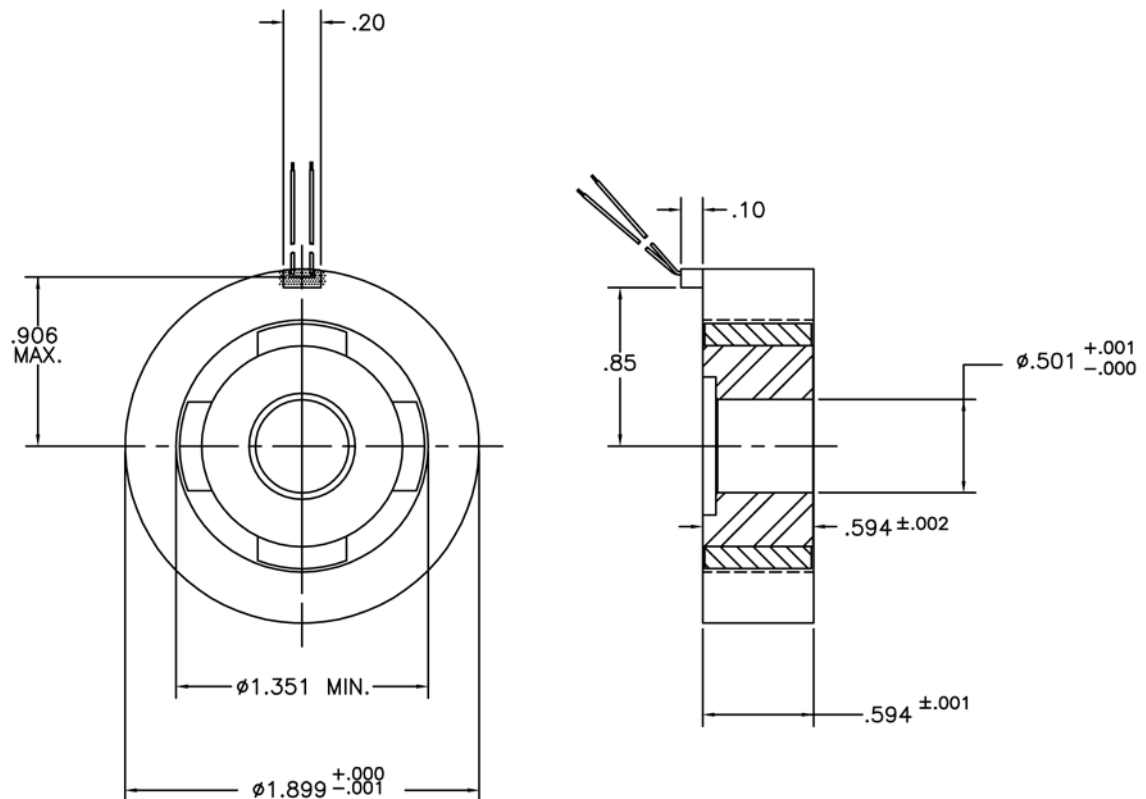


Brushless Limited Angle Torodial Motors

TD-1900-B-1 SPECIFICATIONS @ 25°C

Size Constants	Value	Units
Peak Torque, T_P	27	oz-in
Motor Constant, K_M	3.53	oz-in/ \sqrt{W}
Excursion Angle	± 15	degrees
Number of Poles	4	
Weight	5.5	oz (nom)
Motor Inertia, J_M	2.00E-03	oz-in-s ²
Friction Torque, T_F	0.34	oz-in
Electrical Time Constant, τ_E	0.615	ms
Mechanical Time Constant, τ_M	22.93	ms
Winding Constants	Value	Units
Torque Sensitivity, K_T	9	oz-in/amp
Back EMF, K_E	0.063	V per rad/s
Terminal Resistance, R_M	6.5	ohms (nom)
Terminal Inductance, L_M	4	mH (nom)
Voltage, Stalled at Peak Torque, V_P	22	volts
Amps at Peak Torque, I_P	3	amps

TD-1900-B-1 Typical Outline Drawing



Dimensions are in inches