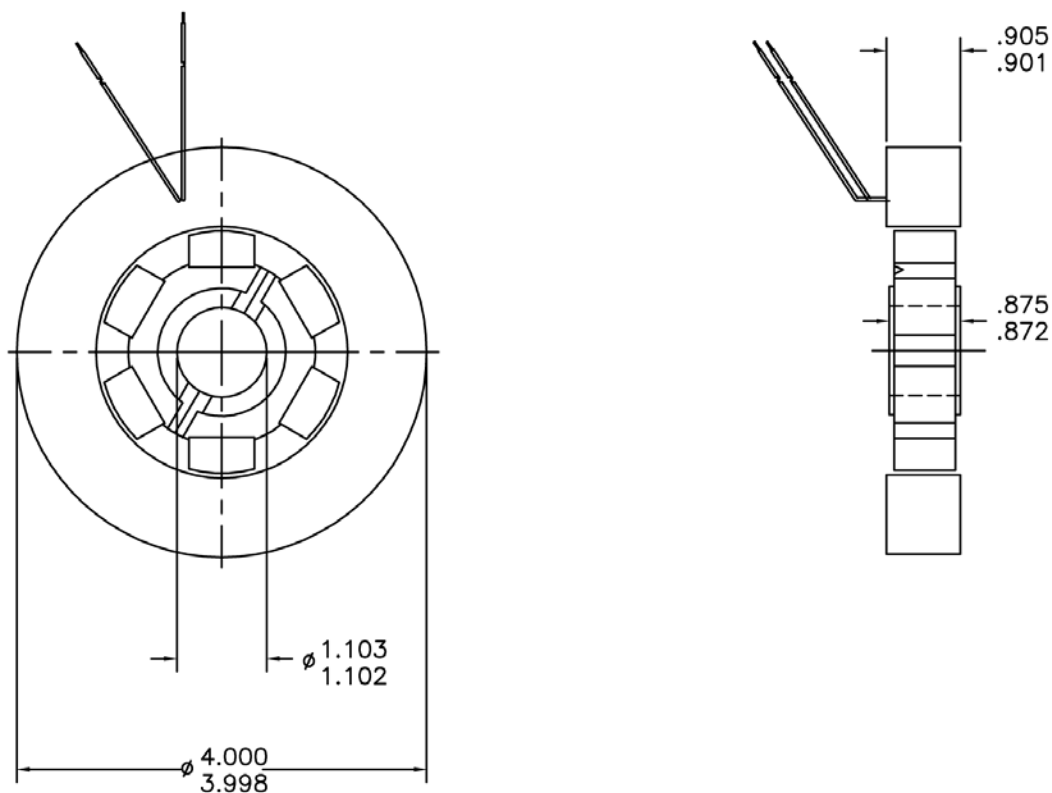


Brushless Limited Angle Torodial Motors

TD-4882-A SPECIFICATIONS @ 25°C

Size Constants	Value	Units
Peak Torque, T_P	350	oz-in
Motor Constant, K_M	23.3	oz-in/ \sqrt{W}
Excursion Angle	± 15	degrees
Number of Poles	6	
Weight	41.3	oz (nom)
Motor Inertia, J_M	8.30E-02	oz-in-s ²
Friction Torque, T_F	0.75	oz-in
Electrical Time Constant, τ_E	2.300	ms
Mechanical Time Constant, τ_M	21.69	ms
Winding Constants	Value	Units
Torque Sensitivity, K_T	52	oz-in/amp
Back EMF, K_E	0.368	V per rad/s
Terminal Resistance, R_M	5	ohms (nom)
Terminal Inductance, L_M	11.5	mH (nom)
Voltage, Stalled at Peak Torque, V_P	34	volts
Amps at Peak Torque, I_P	6.73	amps

TD-4882-A Typical Outline Drawing



Dimensions are in inches