

NOTES:

- 1. **SUPPLY VOLTAGE:** 2.7 - 5.0 Vdc
- 2. **SUPPLY CURRENT:** 4.5 - 7.5 mA (FOR HIGH IMPEDANCE OUTPUT LOAD)

3. **OUTPUT:** CMOS LOGIC, 50mA MAX AT 5Vdc.
 HIGH LOGIC = FLUID
 LOW LOGIC = AIR

4. **SELF TEST:** PROVIDES CHECK FOR FALSE FLUID OUTPUT.
 DURING FLUID MEASUREMENTS, PULSE SELF TEST LINE FROM SUPPLY VOLTAGE TO 0 VOLTS FOR A MINIMUM OF 500µS. OUTPUT SHOULD TOGGLE FROM HIGH TO LOW WITHIN 500µS. TOTAL TEST DURATION WILL NOT EXCEED 1mS (FOR A 500µS INPUT).

5. **RESERVOIR MATERIAL & WALL THICKNESS:** THE FOLLOWING RECOMMENDED WALL THICKNESSES ARE BASED ON POLYCARBONATE MATERIAL. ADDITIONAL MATERIALS WILL REQUIRE VERIFICATION SPECIFIC TO THE APPLICATION.
 WALL THICKNESS ≤ 0.05 [1.3] FOR RANGES 0.3 - 0.8 [7.6 - 20.3]
 WALL THICKNESS ≤ 0.10 [2.5] FOR RANGES 0.8 - 5.0 [20.3 - 127.0]

6. **OPERATING TEMPERATURE:** 50 - 122 °F [10 - 50 C]

7. **STORAGE TEMPERATURE:** -4 - 140 °F [-20 - 60 C]

PART HISTORY COMES FROM DOCUMENT #:					
PART REV	ECN#/CHANGE DESCRIPTION	CHANGES BY:	DATE:	APPROVED BY:	DATE:
01	INITIAL ENGINEERING RELEASE	---	---	---	---
02	ADDED NOTE 5 & INSTALLATION CLARIFICATION	CBH	5/28/2008		
A	RELEASE TO PRODUCTION PER ECN 40894	CBH	11/4/2008		

D

C

B

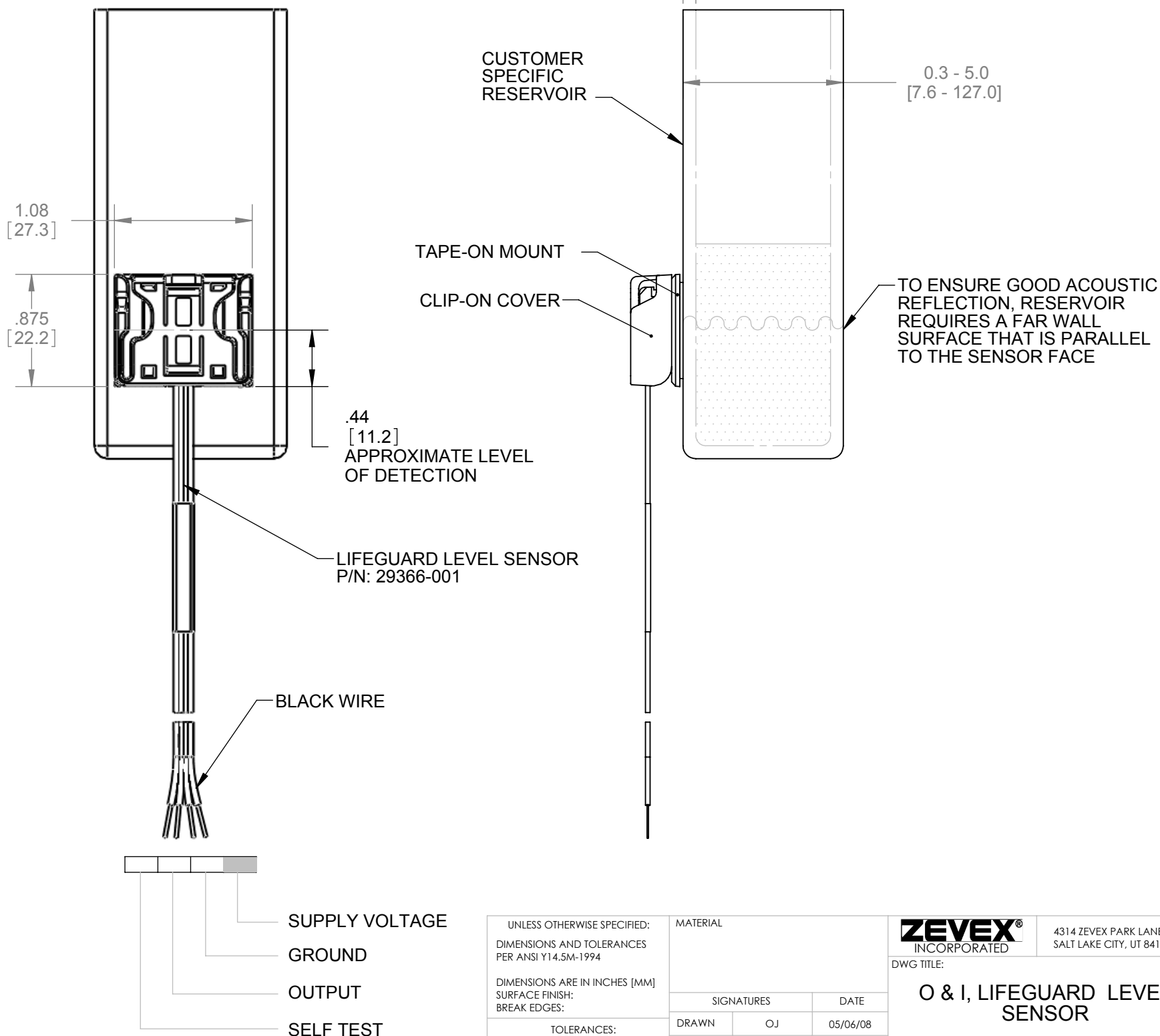
A

D

C

B

A



UNLESS OTHERWISE SPECIFIED: DIMENSIONS AND TOLERANCES PER ANSI Y14.5M-1994		MATERIAL		ZEVEEX INCORPORATED 4314 ZEVEEX PARK LANE SALT LAKE CITY, UT 84123	
DIMENSIONS ARE IN INCHES [MM] SURFACE FINISH: BREAK EDGES:		SIGNATURES		DWG TITLE:	
TOLERANCES: X.X° : ± 0.5° X.X : ± 0.1 X.XX : ± 0.01 X.XXX : ± 0.005		DATE		O & I, LIFEGUARD LEVEL SENSOR	
		DRAWN OJ		05/06/08	
		CHECKED MS		05/06/08	
		ENG APPR. CH		05/06/08	
		CUST APPR.			
SIZE	CAGE CODE	DOC TYPE	DWG. NO.	REV	
B	OHP21	AS	40218	A	
DO NOT SCALE DRAWING			SCALE: NONE	SHEET 1 OF 2	

SOLIDWORKS DOCUMENT

COMPANY CONFIDENTIAL © COPYRIGHT, ZEVEEX, INC.
 THIS DOCUMENT CONTAINS ZEVEEX, INC. CONFIDENTIAL INFORMATION. DO NOT REPRODUCE, USE, OR DISCLOSE WITHOUT ZEVEEX'S EXPRESS APPROVAL. ZEVEEX'S RIGHTS OVER THIS DOCUMENT ARE SET FORTH BY THE COPYRIGHT LAWS OF THE UNITED STATES.

8

7

6

5

4

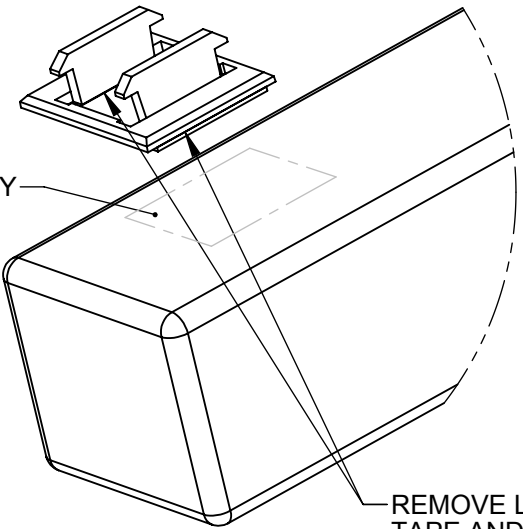
3

2

1

1

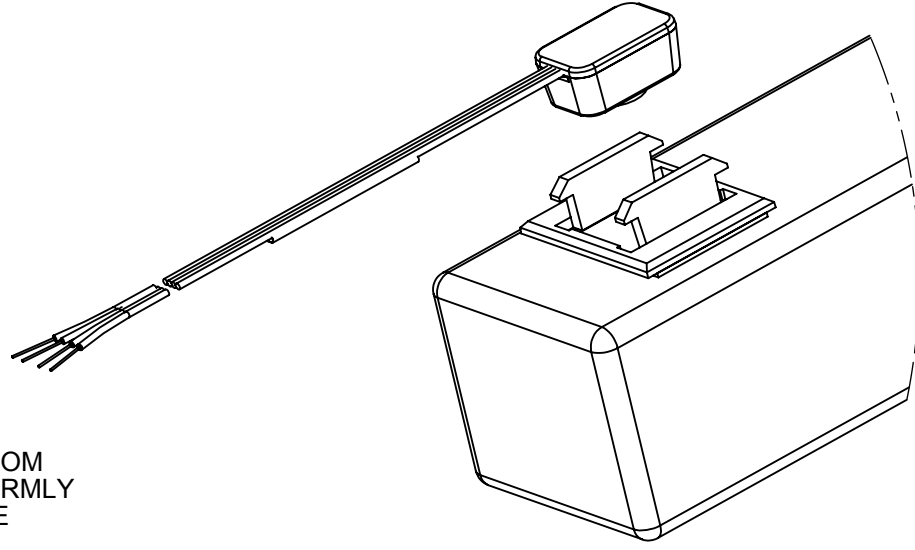
CLEAN SURFACE USING ALCOHOL AND ALLOW TO DRY



REMOVE LINERS FROM TAPE AND PRESS FIRMLY ON CLEAN SURFACE

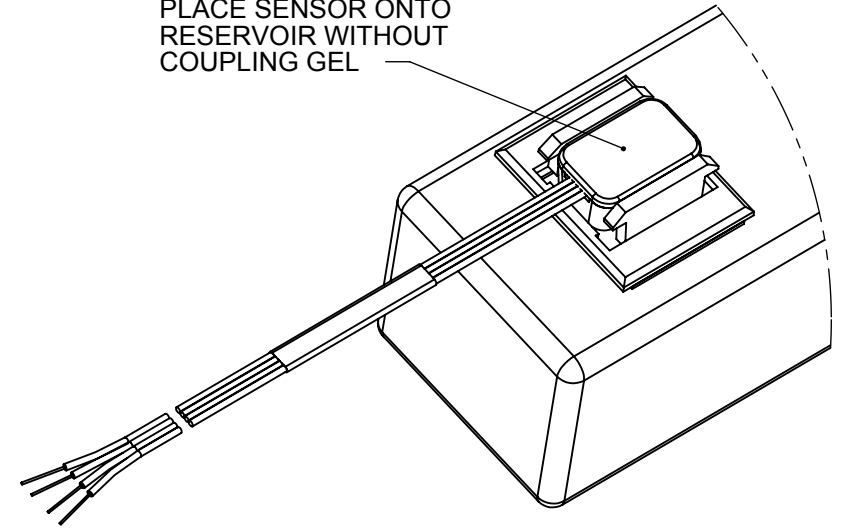
2

WAIT A MINIMUM OF 1 MINUTE BEFORE INSTALLING SENSOR



3

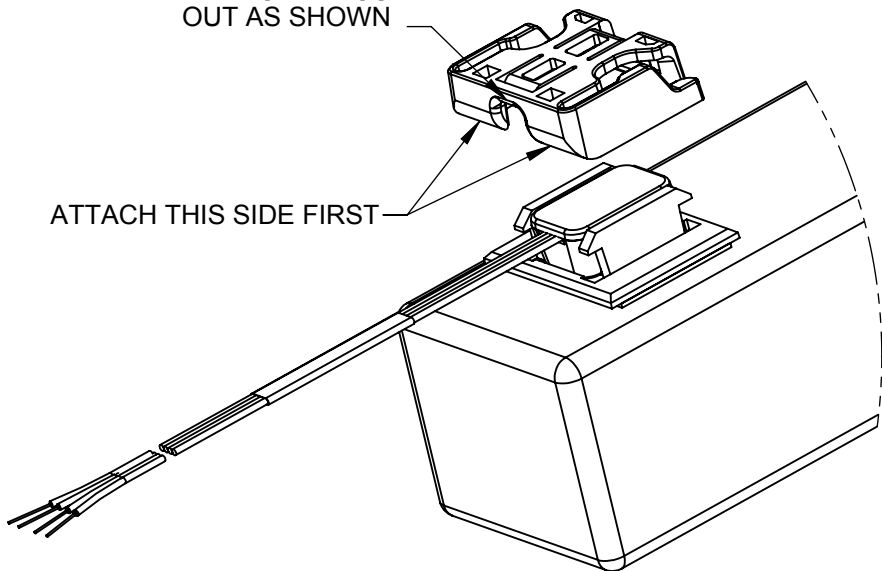
PLACE SENSOR ONTO RESERVOIR WITHOUT COUPLING GEL



4

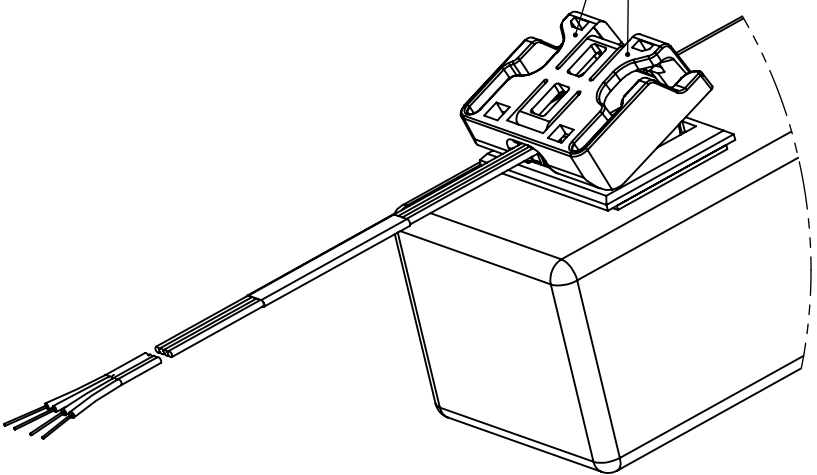
ORIENT PART WITH CABLE CUT-OUT AS SHOWN

ATTACH THIS SIDE FIRST



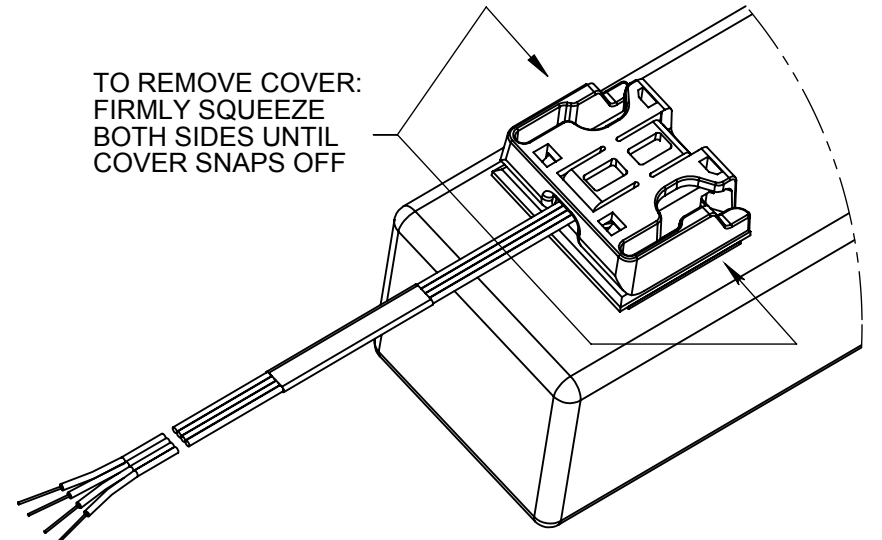
5

PRESS HERE UNTIL COVER CLICKS INTO PLACE



6

TO REMOVE COVER: FIRMLY SQUEEZE BOTH SIDES UNTIL COVER SNAPS OFF



COMPANY CONFIDENTIAL © COPYRIGHT, ZEVEV, INC.

THIS DOCUMENT CONTAINS ZEVEV, INC. CONFIDENTIAL INFORMATION. DO NOT REPRODUCE, USE, OR DISCLOSE WITHOUT ZEVEV'S EXPRESS APPROVAL. ZEVEV'S RIGHTS OVER THIS DOCUMENT ARE SET FORTH BY THE COPYRIGHT LAWS OF THE UNITED STATES.

ZEVEV [®] INCORPORATED		4314 ZEVEV PARK LANE SALT LAKE CITY, UT 84123		
SIZE	CAGE CODE	DOC TYPE	DWG. NO.	REV
B	OHP21	AS	40218	A
DO NOT SCALE DRAWING		SCALE: NONE		SHEET 2 OF 2