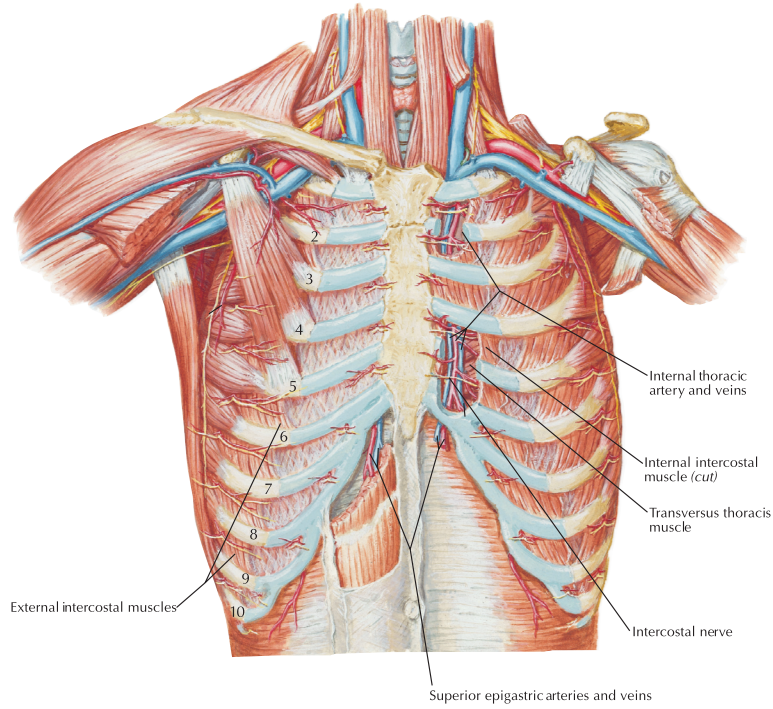


Sternotomy

Catheter Placement Guide

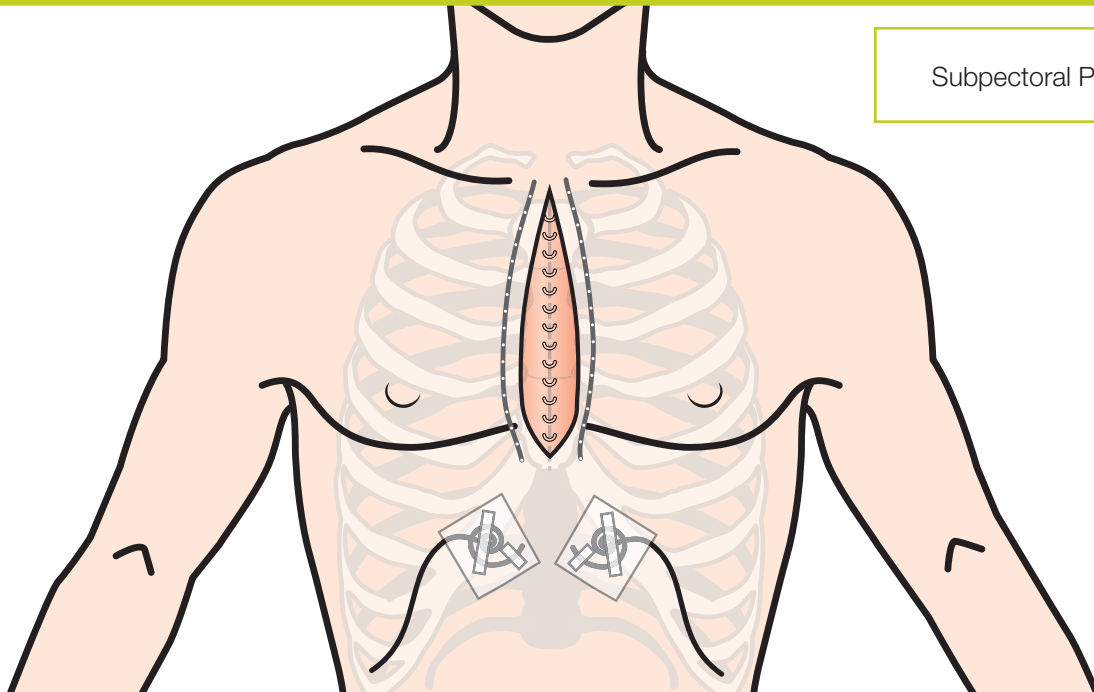


Anatomy



Tunneler Placement

Subpectoral Placement



| Labeled Pump Fill Volume | Flow Rate | Continuous-only or with bolus option (dose & lockout) | Delivery Time (approximate) | Catheter Pack |
|--------------------------|-----------|---|-----------------------------|---------------|
| 275 mL | 2 mL/hr | Continuous-only | 3 days | Dual 5 in. |
| 275 mL | 4 mL/hr | 2 mL, 60 minutes | 2 to 3 days | Dual 5 in. |
| 275 mL | 5 mL/hr | Continuous-only | 2 days | Dual 5 in. |
| 275 mL | 5 mL/hr | 2 mL, 60 minutes | 1 to 2 days | Dual 5 in. |

Tunneler Subpectoral Placement:

- ▶ Following closure of the sternal incision, make a puncture wound, utilizing a #11 blade, inferior to the sub-costal margin of the 7th rib on each side of the incision.
- ▶ Insert the tunneler with peel away introducer and advance until the ribs are encountered.
- ▶ Pass the tunneler anterior to the chest wall beneath the pectoralis lateral to the medial incision. Stay just lateral to the wire penetration sites around the sternum. Advance the tunneler the length of the sternum, leaving infusion segment inferior enough to cover the mediastinal drain sites.
- ▶ Remove the tunneler from the peel away introducer.
- ▶ Insert the saturation catheter into the peel away introducer, advancing the desired length.
- ▶ Remove the peel away introducer.
- ▶ Secure saturation catheter with steri-strip. Coil catheter and secure with additional steri-strips and transparent dressing.



Moog Medical Devices Group
 4314 Zevex Park Lane
 Salt Lake City, UT 84123 USA
 tf 800.970.2337
 ph 801.264.1001
 fx 801.264.1051
www.moog.com/medical

Note: This information is provided for your reference only, based on the experience of other surgeons. Make your decisions on placement, technique, and product selection based on the requirements of your own surgical case.

CAUTION: Federal (USA) law restricts this device to sale by or on the order of a physician.