

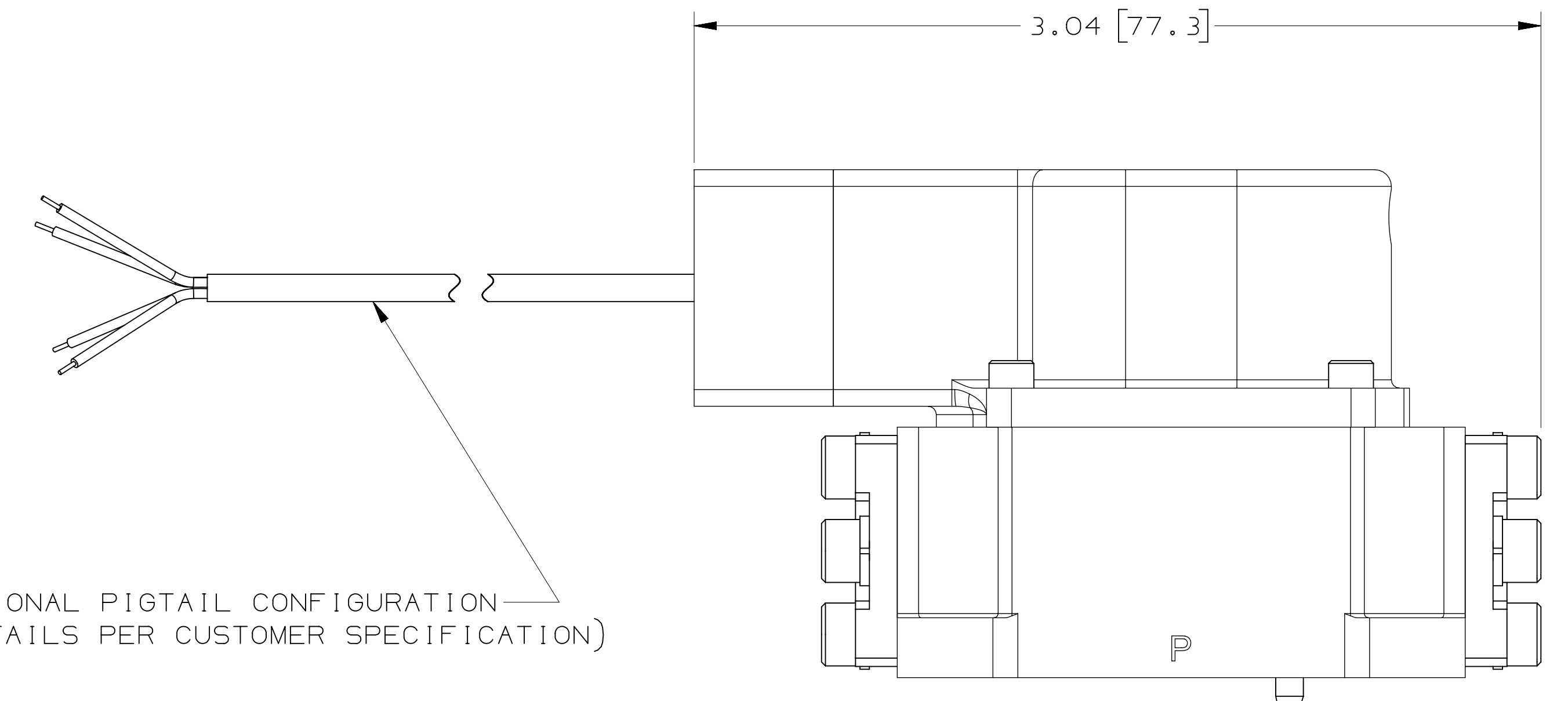
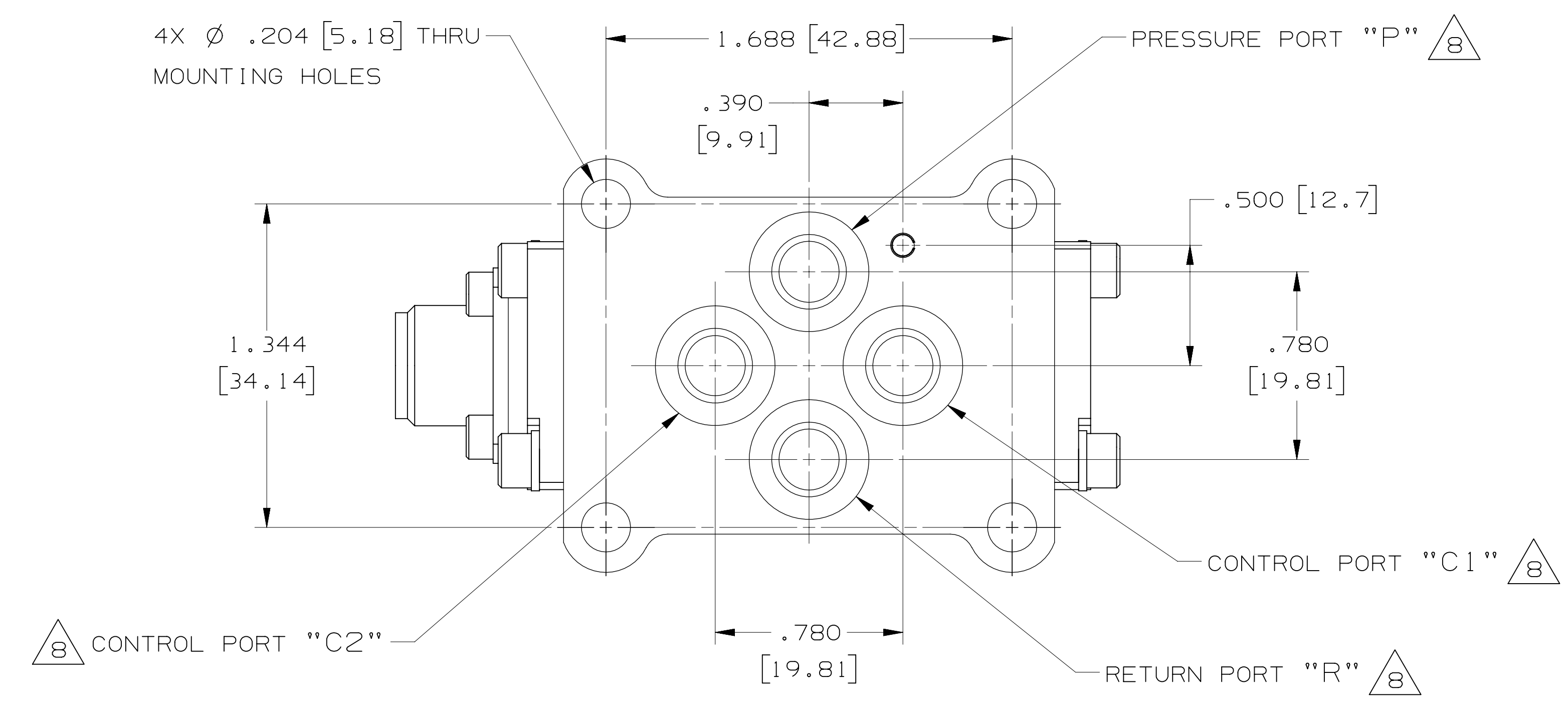
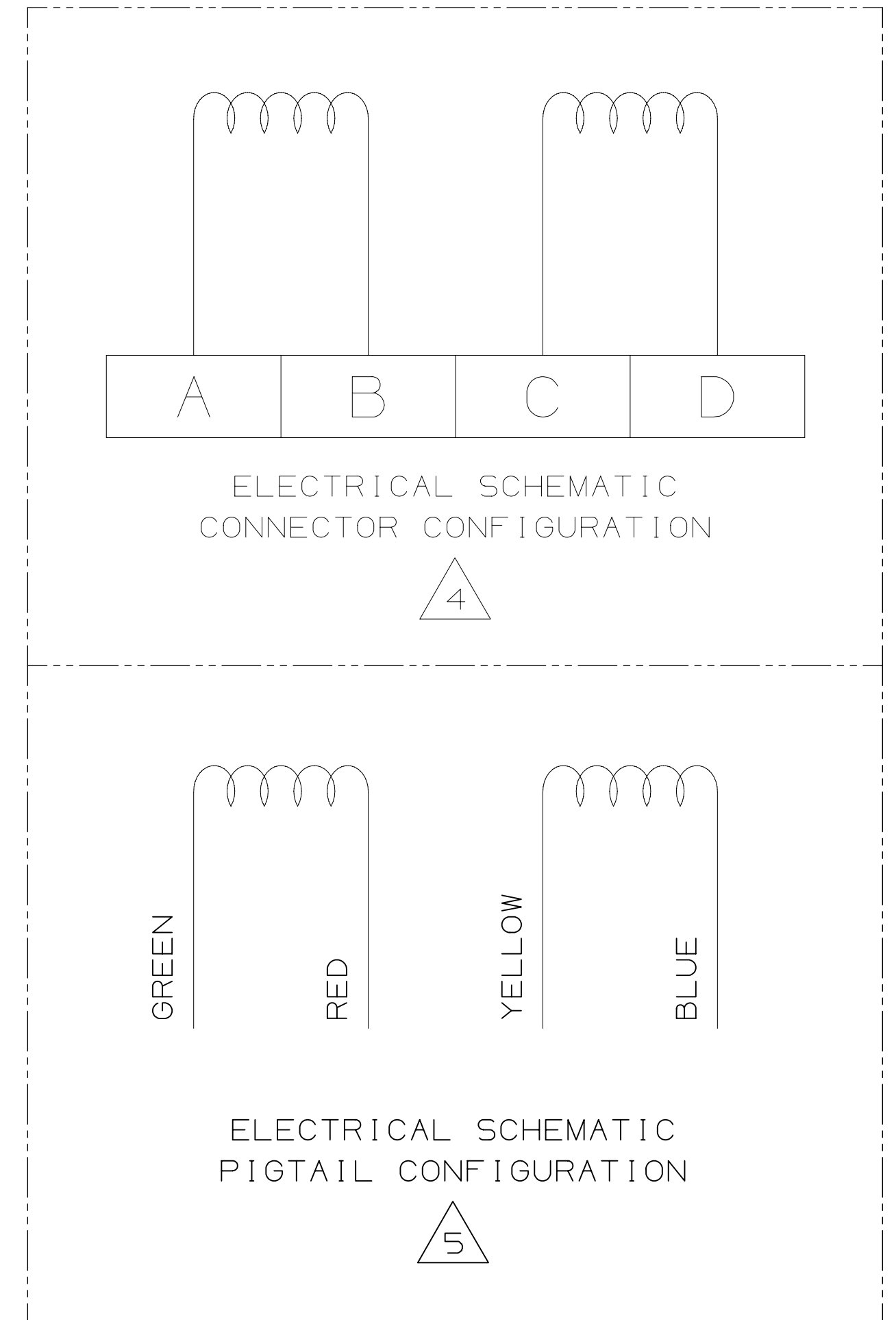
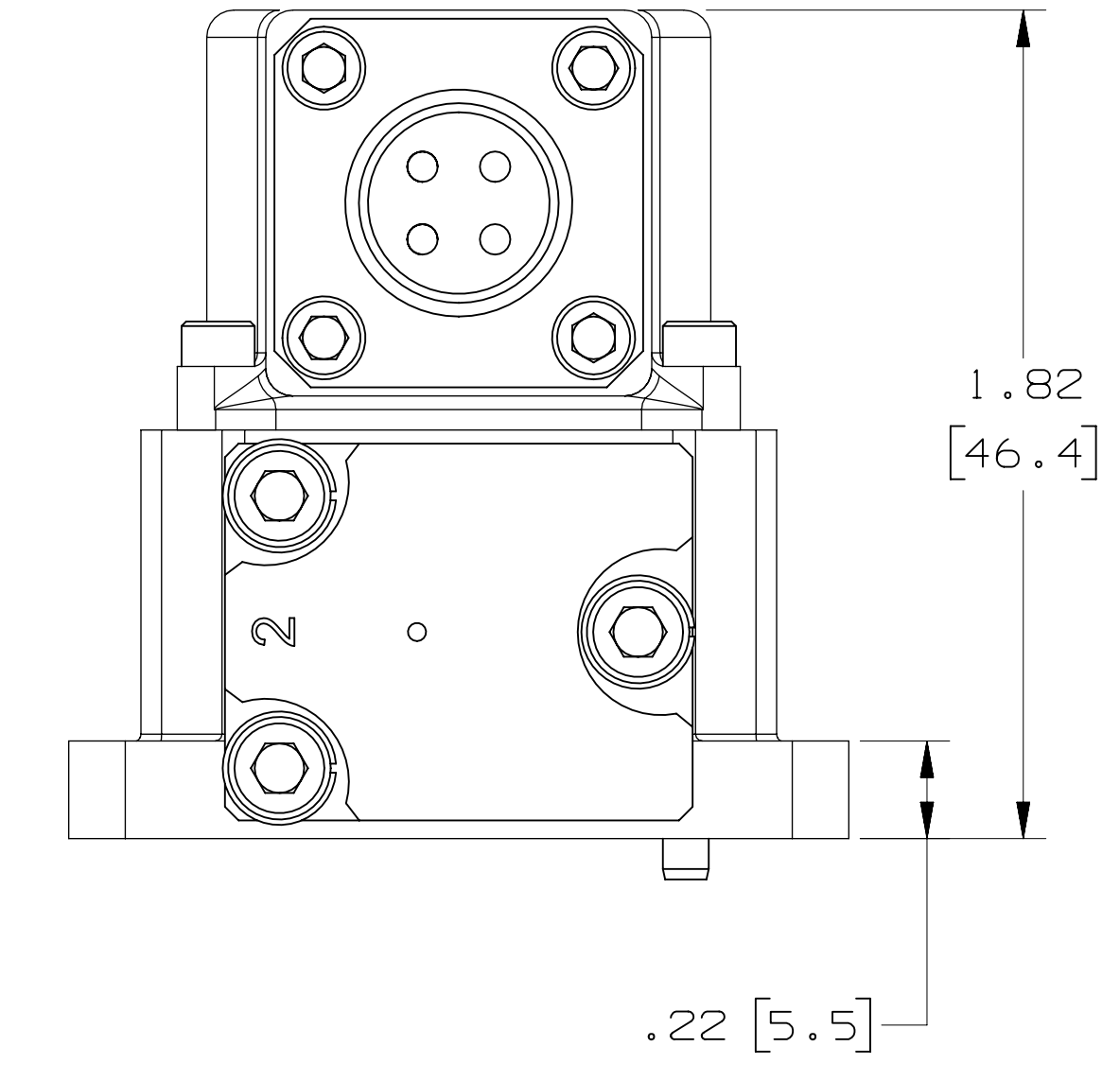
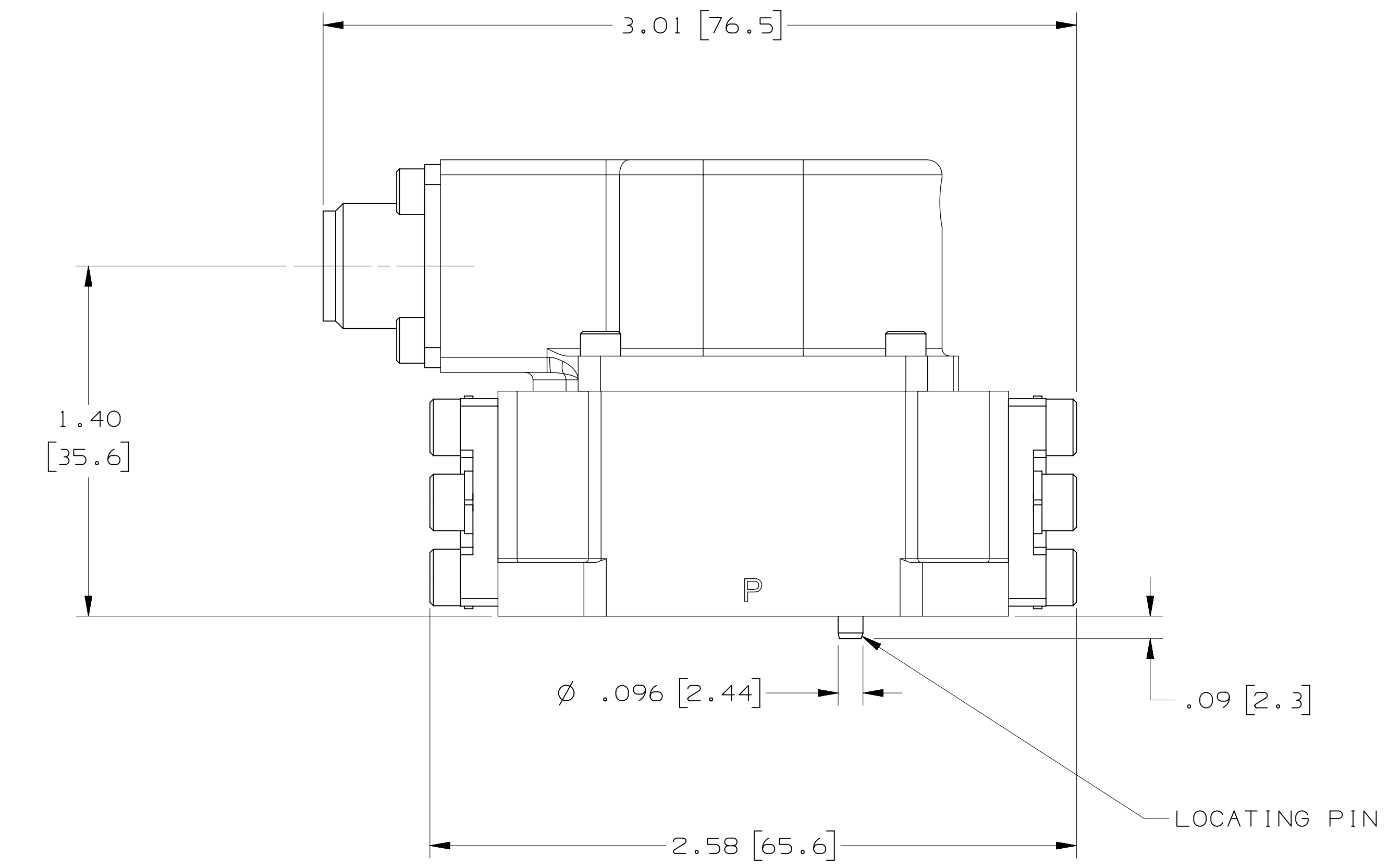
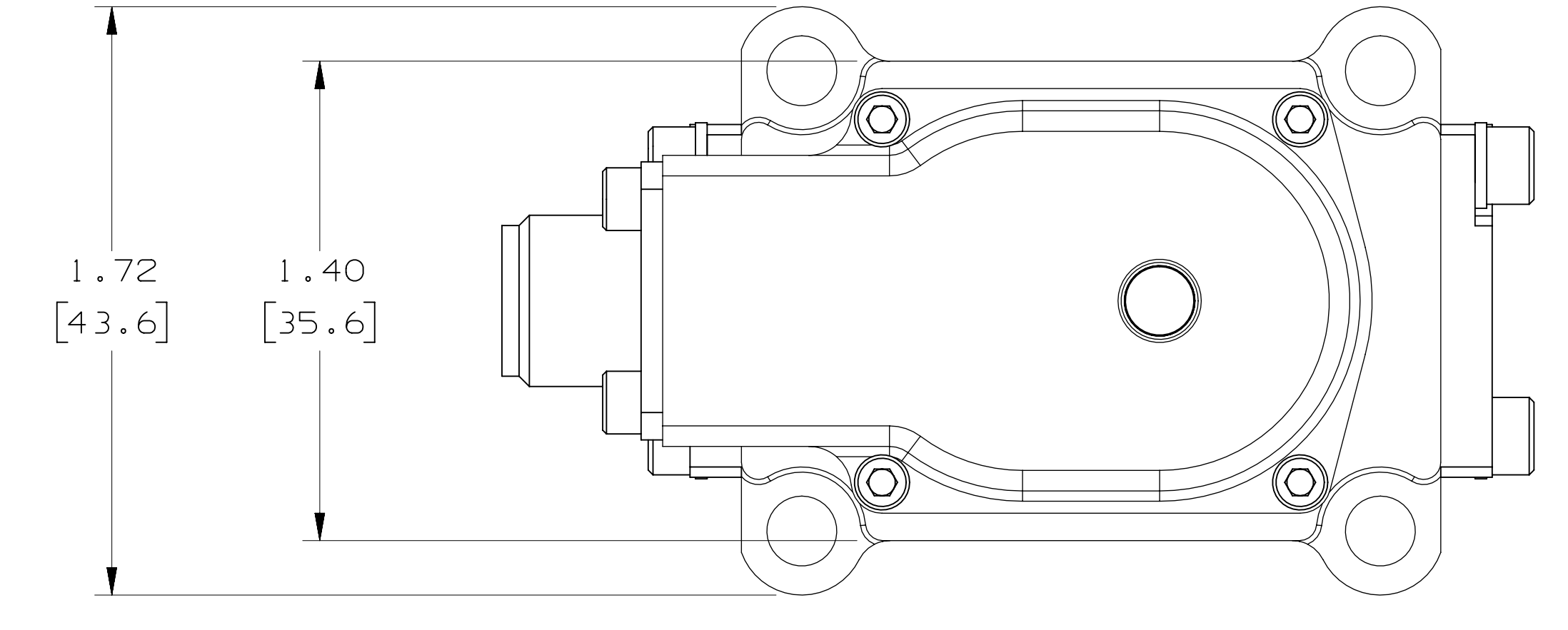
ZONE		REV	DESCRIPTION	DATE	APPROVED
		-	EO UE1066070: RELEASE	20180604	MJN/RJM
		A	SEE EO UE1066588	20181101	MJN/RJM
		B	SEE EO UE1068373	20190618	MJN/RJM

THIS TECHNICAL DATA/DRAWING/DOCUMENT CONTAINS MOOG PROPRIETARY AND CONFIDENTIAL INFORMATION. SUBSIDIARIES EXCEPT AS EXPRESSLY GRANTED BY CONTRACT OR BY OPERATION OF LAW AND IS RESTRICTED TO USE BY ONLY MOOG EMPLOYEES AND OTHER PERSONS AUTHORIZED IN WRITING BY MOOG OR AS EXPRESSLY GRANTED BY CONTRACT OR BY OPERATION OF LAW. NO PORTION OF THIS DATA/DRAWING/DOCUMENT SHALL BE REPRODUCED OR DISCLOSED OR FURNISHED IN WHOLE OR IN PART TO OTHERS OR USED BY OTHERS FOR ANY PURPOSE WHATSOEVER EXCEPT AS SPECIFICALLY AUTHORIZED IN WRITING BY MOOG INC. OR MOOG INC. SUBSIDIARY.

THIS DOCUMENT CONTAINS TECHNOLOGY SUBJECT TO THE U.S. EXPORT ADMINISTRATION REGULATIONS (EAR) AND MAY NOT BE EXPORTED OR TRANSFERRED TO ANY UNLICENSED PERSON, ENTITY, OR COMPANY, BY ANY MEANS, OR FOR ANY PURPOSES REQUIRING A LICENSE, WITHOUT PRIOR WRITTEN APPROVAL FROM THE U.S. DEPARTMENT OF COMMERCE, BUREAU OF INDUSTRY AND SECURITY (BIS). DIVERSION CONTRARY TO U.S. LAW IS PROHIBITED.

NOTES:

- FLUID:  
PETROLEUM BASE, OR SELECTED PHOSPHATE ESTER FLUID,  
60 TO 450 SSU AT 100°F (10 TO 97 CENTISTOKES AT 38°C).  
CLEANLINESS LEVEL PER NAS 1638: CLASS 6.
- OPERATING TEMPERATURE RANGE: -20°F TO +275°F (-29°C TO +135°C).
- MAXIMUM OPERATING PRESSURE: 4000 PSI (275 BAR).
- STANDARD POLARITY OPERATION:  
FLOW OUT CONTROL PORT "C2" WHEN:  
SERIES: A+, B & C TIED, D-  
PARALLEL: A & C TIED +, B & D TIED -  
SINGLE: A+, B- OR C+, D-
- STANDARD POLARITY OPERATION:  
FLOW OUT CONTROL PORT "C2" WHEN:  
SERIES: GREEN +, RED & YELLOW TIED, BLUE -  
PARALLEL: GREEN & YELLOW TIED +, RED & BLUE TIED -  
SINGLE: GREEN +, RED - OR YELLOW +, BLUE -
- ELECTRICAL CONNECTOR MATES WITH PC-06E-8-45 OR EQUIVALENT.
- DIMENSIONS ARE FOR REFERENCE ONLY.  
DIMENSIONS IN BRACKETS ( ) ARE IN MILLIMETERS.
- PORTS P, R, C1, C2:  
□  $\phi$  .498 [12.65] O.D. X  $\phi$  .312 [7.92] I.D.  $\nabla$  .054 [1.37]  
O-RINGS: .364 [9.25] I.D. X .070 [1.78] CROSS SECTION (UNIVERSAL SIZE -012).
- SURFACE TO WHICH VALVE IS MOUNTED REQUIRES  $\sqrt{32}$  [  $\sqrt{0.8}$  ],  $\square$  .001 [0.025].
- SUGGESTED MOUNTING SCREWS: #10-32 X .50 LONG SOCKET HEAD CAP SCREWS.



LAST SECTION/DATUM		NEXT ASSEMBLY		USED ON		UNLESS OTHERWISE SPECIFIED: SURFACE FINISH: .01 .xxx ± .005 ANGULAR: 0° 30' FILLETS: .015 RAD EDGES: .010 RAD OR CHAM SURFACE ROUGHNESS: PER ANSI Y14.26 & B46.1: 125 CONCENTRIC DIAMETERS: $\nabla$ [1.00] BALL POINTS: 115° TAP ALL DIMENSIONS ARE IN INCHES PART TO BE FREE OF BURRS		INTERPRET DRAWING PER MIL-STD-100 DIMENSIONING AND TOLERANCING PER ASME Y14.5M-1994		CONTRACT NO. PREPARED: M. NEUREUTHER 20180509 CHECKED: R. MILITTO 20180509 MDR ENGR: DES ENGR: PRD ENGR: R. MILITTO 20180509 APL ENGR: MFG: T. WEISKORFF 20180509 DUAL: C. WENRICH 20180509		MOOG INC. MOOG INC., EAST AURORA, NY 14052 TITLE: INSTALLATION, SERVO VALVE, -032 SERIES, STANDARD SIZE: E 94697 SCALE: 5/2 SHEET 1 OF 1	
--------------------	--	---------------	--	---------	--	-----------------------------------------------------------------------------------------------------------------------------------------------------------------------------------------------------------------------------------------------------------------------------------------------------------------------	--	-------------------------------------------------------------------------------------	--	---------------------------------------------------------------------------------------------------------------------------------------------------------------------------------------------------------------------	--	---------------------------------------------------------------------------------------------------------------------------------------------------------	--

INTERNATIONAL PART