

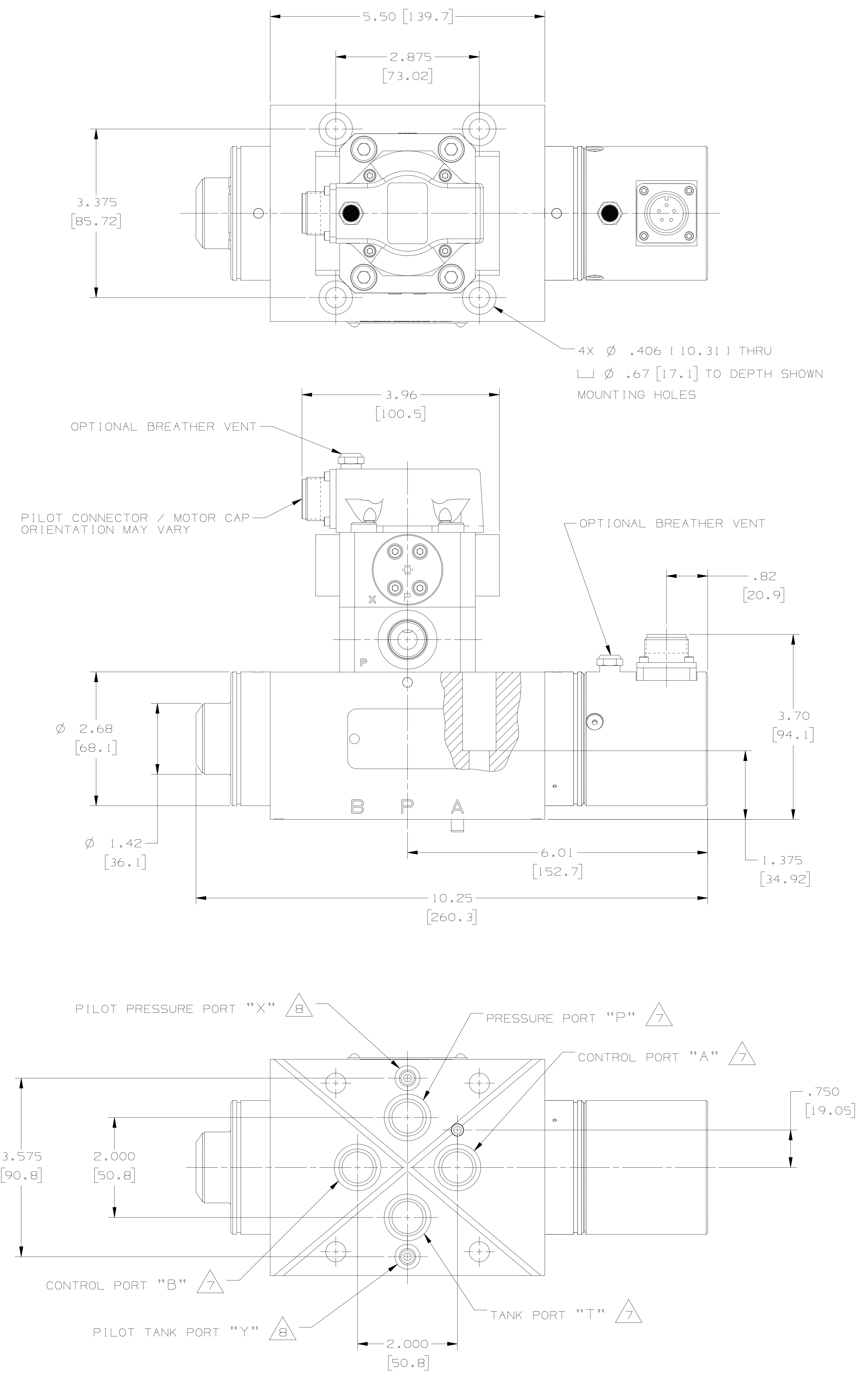
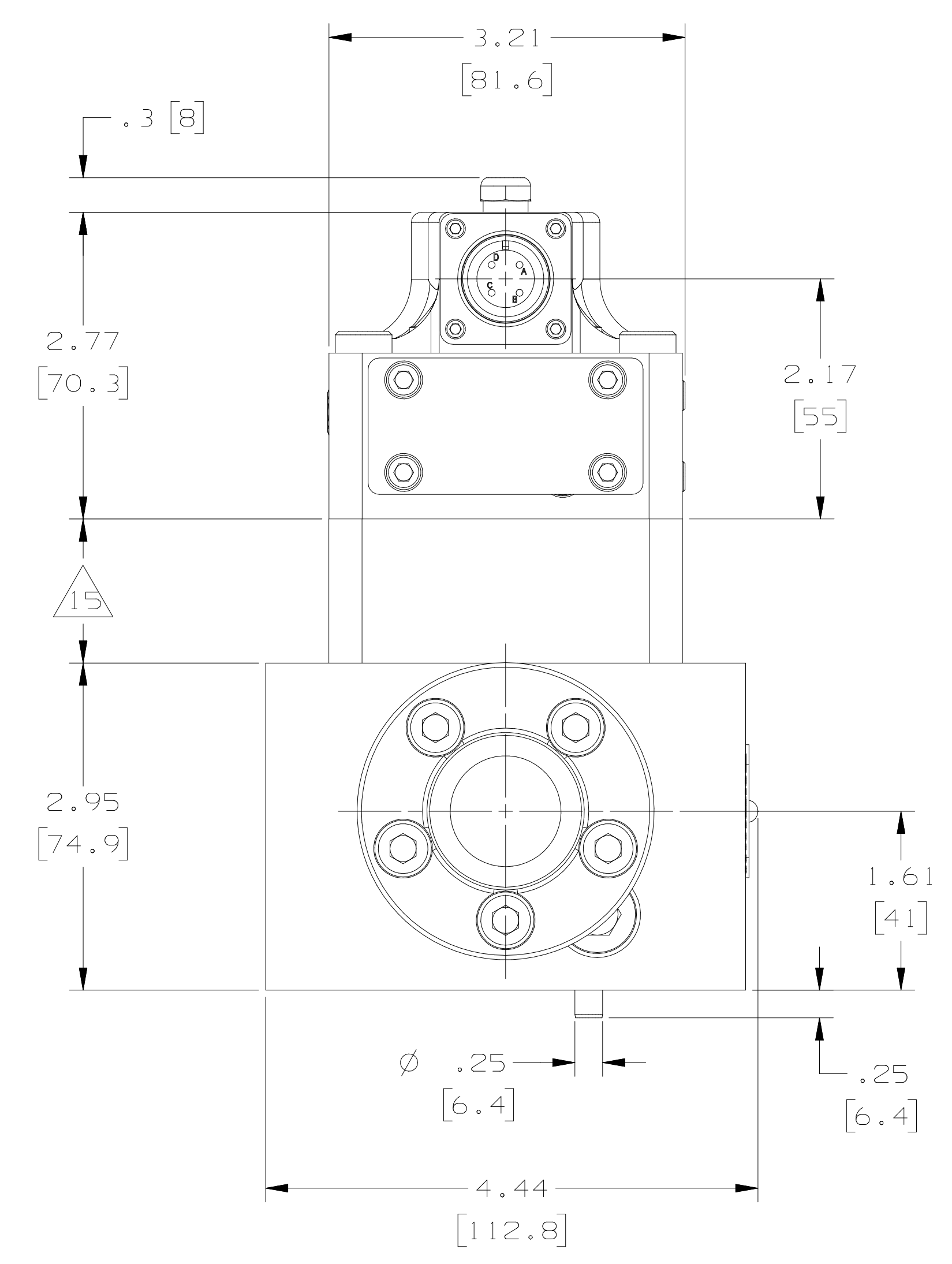
THIS TECHNICAL DATA/DRAWING/DOCUMENT CONTAINS MOOG PROPRIETARY AND CONFIDENTIAL INFORMATION. SUBSIDIARIES EXCEPT AS EXPRESSLY GRANTED BY CONTRACT OR BY OPERATION OF LAW AND IS RESTRICTED TO USE BY ONLY MOOG EMPLOYEES AND OTHER PERSONS AUTHORIZED IN WRITING BY MOOG OR ITS SUBSIDIARIES. GRANTED BY CONTRACT OR BY OPERATION OF LAW. NO PORTION OF THIS DATA/DRAWING/DOCUMENT BE REPRODUCED OR DISCLOSED BY OR FOR THE BENEFIT OF OTHERS OR USED BY OTHERS FOR ANY PURPOSE WHATSOEVER EXCEPT AS SPECIFICALLY AUTHORIZED IN WRITING BY MOOG INC. OR MOOG INC. SUBSIDIARY.

THIS DOCUMENT CONTAINS TECHNOLOGY SUBJECT TO THE U.S. EXPORT ADMINISTRATION REGULATIONS (EAR) AND MAY NOT BE EXPORTED OR TRANSFERRED TO ANY UNLICENSED PERSON, ENTITY, OR COMPANY, BY ANY MEANS, OR FOR END USES INCLUDING A LICENSE, WITHOUT PRIOR WRITTEN APPROVAL FROM THE U.S. DEPARTMENT OF COMMERCE, BUREAU OF INDUSTRY AND SECURITY (BIS). DIVERSION CONTRARY TO U.S. LAW IS PROHIBITED.

ZONE		REV	DESCRIPTION	DATE	APPROVED
-	SEE	EO UE1063422	RELEASE	20170320	MJN/TKP/MEL

NOTES:

- FLUID:  
TYPE: DEPENDENT ON SEAL MATERIAL; SEE TYPE CODE POSITION "8" ON SHEET 2.  
RECOMMENDED VISCOSITY RANGE AT 38°C [100°F]: 10 TO 97 mm<sup>2</sup>/s (cSt).  
CLEANLINESS LEVEL PER ISO 4406:  
NORMAL LIFE: 17/14/11  
LONG LIFE: 15/13/10
- STANDARD TEMPERATURE RANGE: -14°F TO +176°F [-10°C TO +80°C].
- MAXIMUM OPERATING PRESSURE: SEE TYPE CODE POSITION "3" ON SHEET 2.
- REFERENCE STANDARD VALVE SCHEMATIC ON SHEET 2.
- ELECTRICAL CONNECTOR: SEE TYPE CODE POSITION "9" ON SHEET 2.
- DIMENSIONS ARE FOR REFERENCE ONLY.  
DIMENSIONS IN BRACKETS [ ] ARE IN MILLIMETERS.
- POWER STAGE PORTS (BASE) P, T, A, B:  
□ ∅ .937 [23.8] ∇ .052 [1.32].  
O-RINGS: .801 [20.35] I.D. X .070 [1.78] CROSS SECTION (UNIVERSAL SIZE -019).
- POWER STAGE PORTS (BASE) X, Y:  
□ ∅ .501 [12.73] ∇ .052 [1.32].  
O-RINGS: .364 [9.25] I.D. X .070 [1.78] CROSS SECTION (UNIVERSAL SIZE -012).
- PILOT STAGE PORTS (BASE) P, T, A, B:  
□ ∅ .563 [14.3] ∇ .055 [1.4].  
O-RINGS: .426 [10.82] I.D. X .070 [1.78] CROSS SECTION (UNIVERSAL SIZE -013).
- PILOT STAGE PORT (BASE) X:  
□ ∅ .501 [12.73] ∇ .052 [1.32].  
O-RING: .364 [9.25] I.D. X .070 [1.78] CROSS SECTION (UNIVERSAL SIZE -012).
- FOR INFORMATION/INSTRUCTION ON THE FOLLOWING, REFER TO:  
"79-100 SERIES INSTALLATION AND OPERATION INSTRUCTION" (CDS6581), AVAILABLE ON [www.moog.com/installation](http://www.moog.com/installation).  
A.) NULL ADJUSTMENT.  
B.) PILOT OIL SUPPLY (INTERNAL VS EXTERNAL).
- SURFACE TO WHICH VALVE IS MOUNTED REQUIRES  $\sqrt[32]{\frac{0.8}{1}}$ ,  $\sqrt[4]{.001 [0.025]}$ .
- SUGGESTED MOUNTING SCREWS:  
.375-16 X 2.25 LONG [M10 X 50 LONG] SOCKET HEAD CAP SCREWS.
- FOR ACCESSORIES AND SPARE PARTS SEE 79 SERIES CATALOG (CDL6198), AVAILABLE ON [www.moog.com](http://www.moog.com).
- ADAPTER PLATE USED ON LEGACY VALVES ONLY, FOR EXTERNAL PILOT VALVE PRESSURE AND RETURN.  
PORTS PER SAE J1926/1 .750-16 UNF-2B DASH 8 STRAIGHT THREAD O-RING BOSS (.50 IN O.D. TUBE).  
ADAPTER PLATE HEIGHT VARIES DEPENDENT ON PART NUMBER USED.  
A01273-001 = 1.30  
A07021-003 = 1.20  
CA59273-001 = 1.30  
NEW DESIGN WILL USE "X" AND/OR "Y" PORTS IN POWER STAGE BASE, WITHOUT ADAPTER PLATE.



REFERENCE MOUNTING PATTERN SPECIFICATION  
ISO 10372-06-05-0-92  
(EXCEPT FOR PORT "X" AND "Y" LOCATION)

INTERNATIONAL PART

LAST SECTION/DATUM		NEXT ASSEMBLY		USED ON		UNLESS OTHERWISE SPECIFIED XXX.XX.XXX.XX ANGULAR ± 0° 30' FILLETS ± 0.15 RAD EDGES ± 0.10 RAD OR CHAM SURFACE ROUGHNESS PER ANSI Y14.36 & B46.1 CONCENTRIC DIAMETERS: [1.028] DRILL POINTS: 118° ± 14° ALL DIMENSIONS ARE IN INCHES PART TO BE FREE OF BURRS		INTERPRET DRAWING PER MIL-STD-100 DIMENSIONING AND TOLERANCING PER ASME Y14.5M-1994 MATERIAL		CONTRACT NO.		MOOG INC.	
THIRD ANGLE PROJECTION										PREPARED M. NEUREUTHER [20170316]		MOOG INC., EAST AURORA, NY 14052	
										CHECKED T. PEDERSEN [20170316]		TITLE	
										MGR ENGR		INSTALLATION,	
										DES ENGR M. LUDLOW [20170316]		3 STAGE SERVO VALVE,	
										PRD ENGR		-079-1XXF	
										APL ENGR		SIZE	
										MFG R. BONETTO [20170316]		E 94697	
										DUAL C. WENRICH [20170316]		SCALE 1/1	
										DWG NO.		CC 32519	
										SHEET		1 OF 2	

CC 32519

TYPE CODE DESIGNATION - AS SHOWN ON NAMEPLATE OF ELECTROHYDRAULIC SERVO VALVE.  
(EXAMPLE: S25J0006V5M7)

POSITION	1	2	3	4	5	6	7	8	9	10	11	
CODE	S	2	5	J	0	0	0	6	V	5	M	7

POSITION "3" (PRESSURE RATINGS, DEPENDENT ON PILOT VALVE BODY MATERIAL):

CODE	MAXIMUM DESIGN (OPERATING)			NORMAL TEST			PROOF		
	MPA	BAR	PSI	MPA	BAR	PSI	MPA	BAR	PSI
F (ALUMINUM BODY)	21.0	210	3000	21.0	210	3000	21.0	210	3000
J (ALUMINUM BODY)	31.5	315	4500	21.0	210	3000	31.5	315	4500
K (STEEL BODY)	35.0	350	5000	28.0	280	4000	51.5	515	7500

POSITION "8" (SEAL MATERIAL):

CODE	MATERIAL
N	NBR (BUNA)
V	FKM (VITON)

POSITION "9" (PILOT VALVE CONNECTOR, TYPE AND ORIENTATION OVER PORT; REFER TO TYPE CODE ON PILOT VALVE NAMEPLATE).

CODE	TYPE	ORIENTATION	MATES WITH
A	4 PIN MS THREADED	CONNECTOR OVER PORT A (C1)	MS3106-14S-2S OR EQUIVALENT
B	4 PIN MS THREADED	CONNECTOR OVER PORT B (C2)	MS3106-14S-2S OR EQUIVALENT
P	4 PIN MS THREADED	CONNECTOR OVER PORT P	MS3106-14S-2S OR EQUIVALENT
V	PYGMY CONNECTOR	8-SHELL CONNECTOR ANY ORIENTATION	PT06-8-4S OR EQUIVALENT
X	SPECIAL VERSIONS		
3	4 LEAD PIGTAIL	CONNECTOR OVER PORT P	N/A

POSITION "9" (LVDT CONNECTOR, TYPE AND ORIENTATION):

CODE	TYPE	ORIENTATION	MATES WITH
5	5 PIN MS THREADED	CONNECTOR OVER ANY ORIENTATION	MS3106-14S-5S OR EQUIVALENT
X	SPECIAL VERSIONS		

POSITION "11" (EFB SUPPLY VOLTAGE):

CODE	VALVE ELECTRONICS	VALVE VERSION
7	CUSTOMER SUPPLIED ELECTRONICS	EFB - WITHOUT MANUAL OVERRIDE
X	SPECIAL VERSION	

