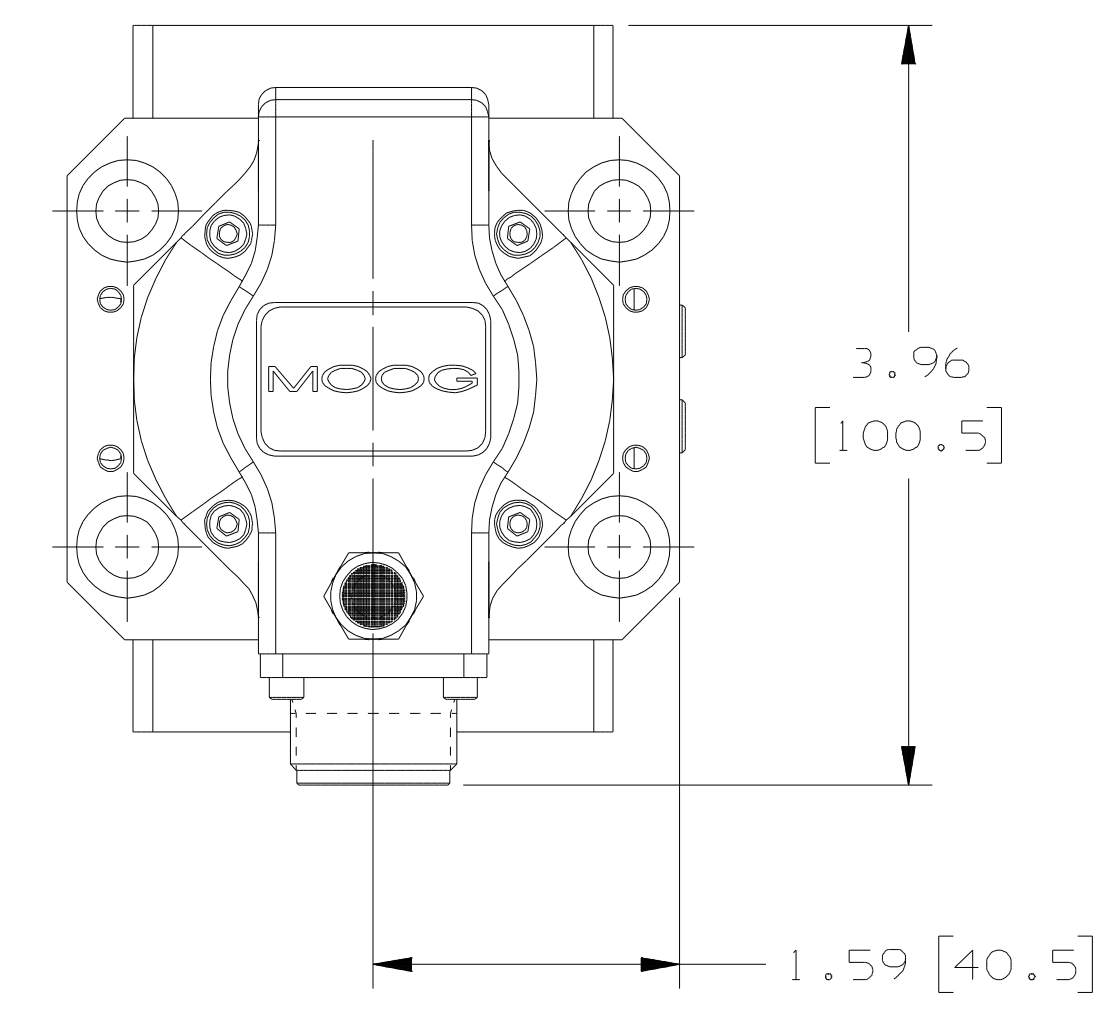
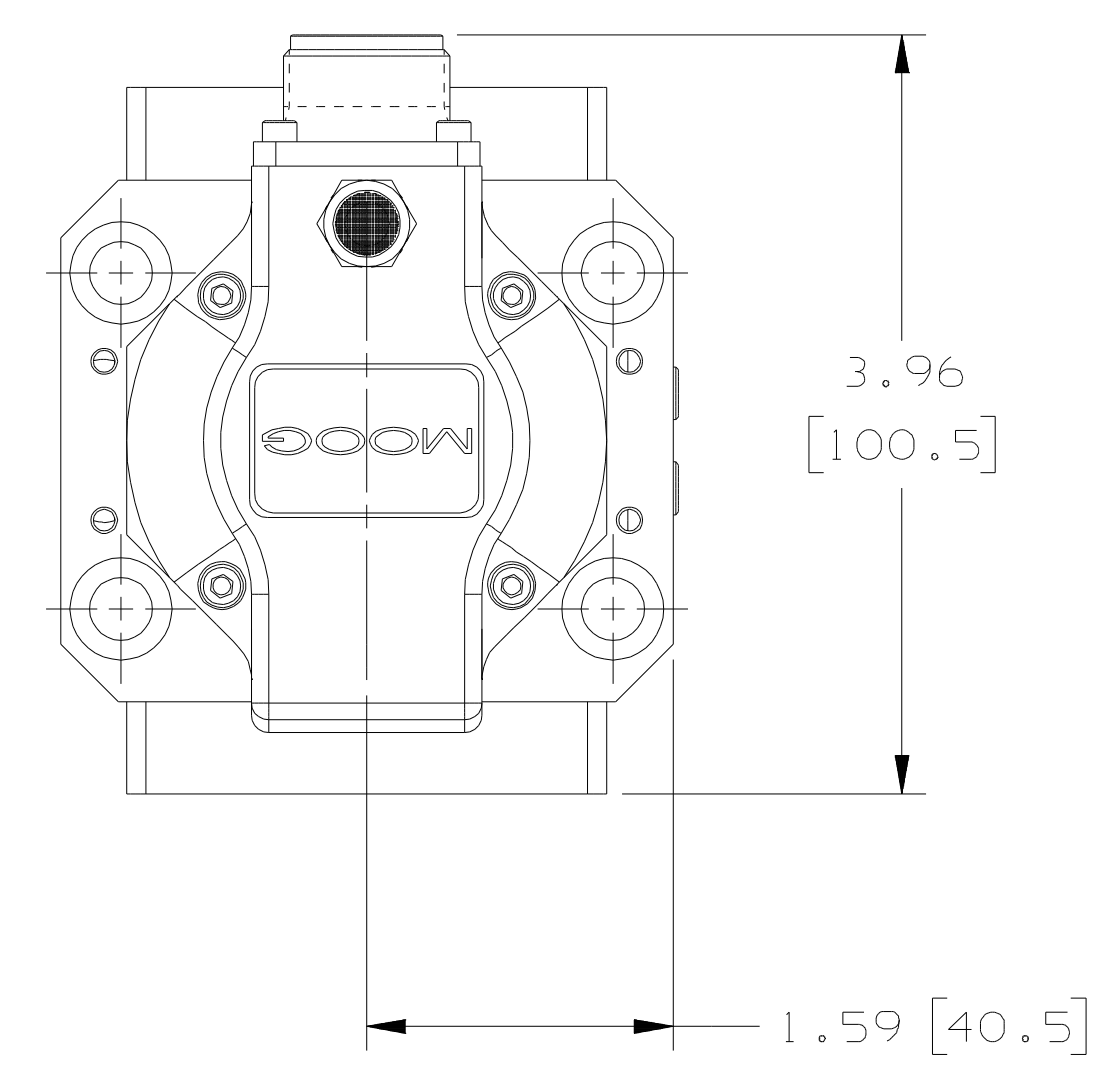
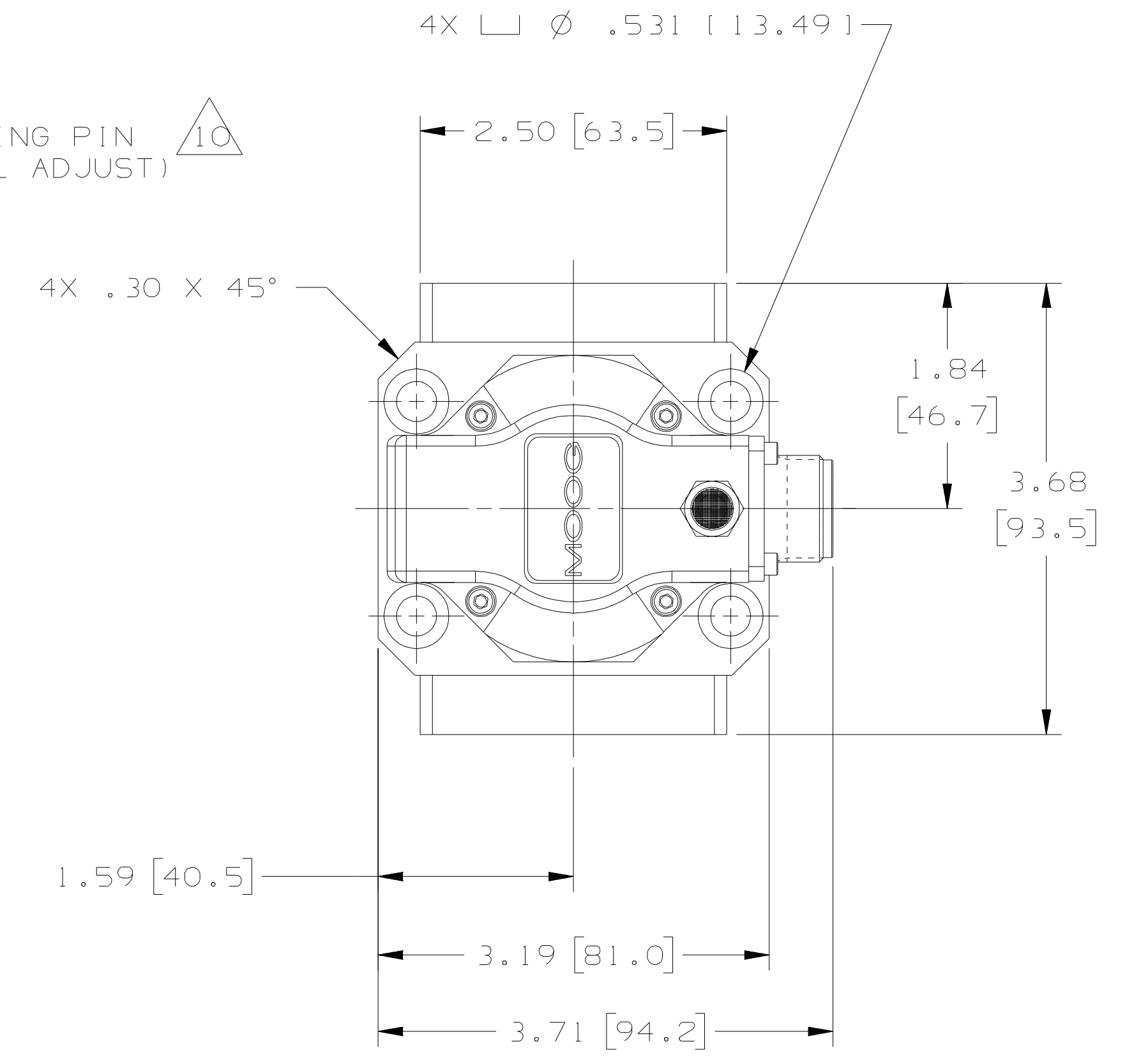
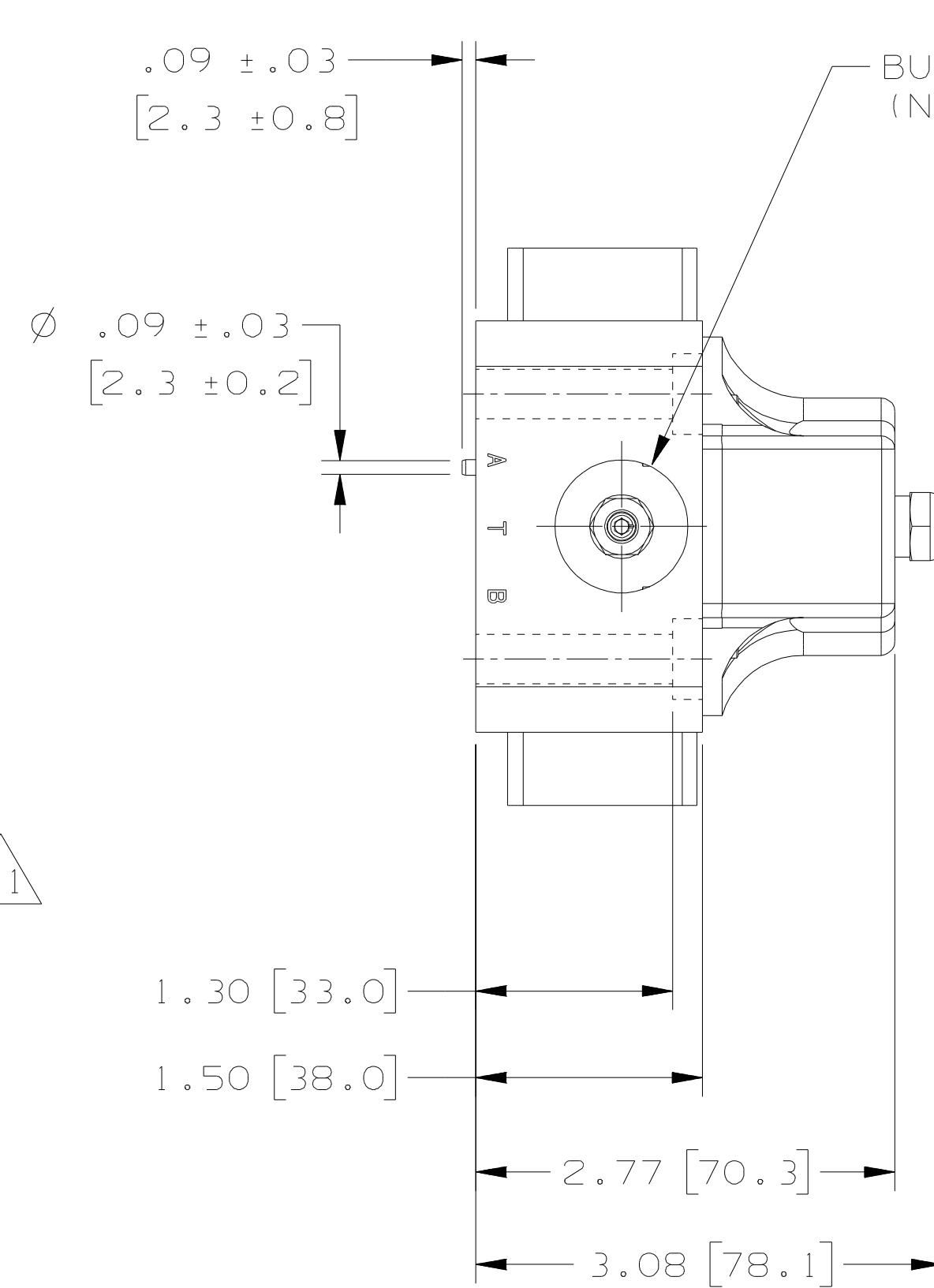
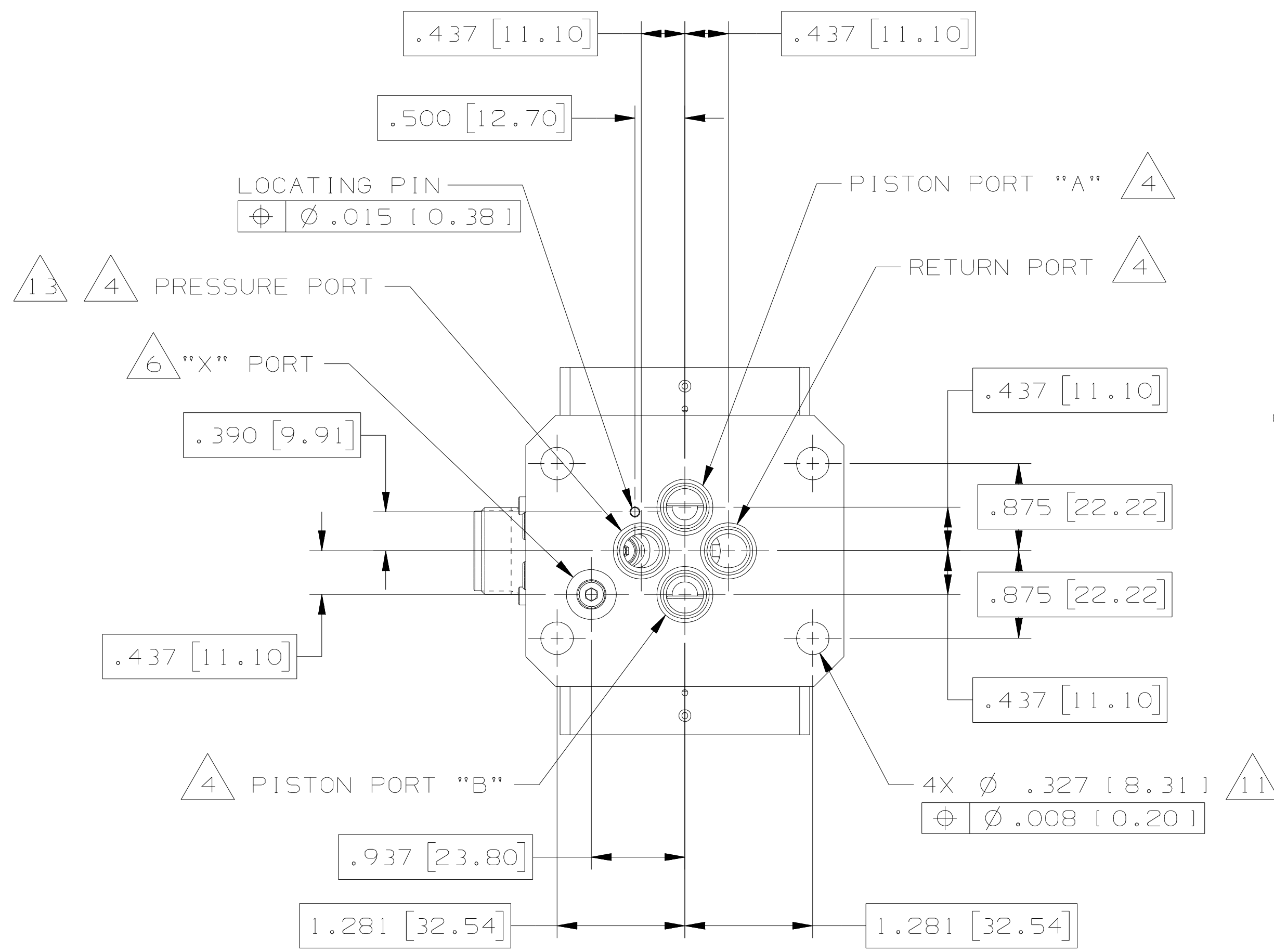
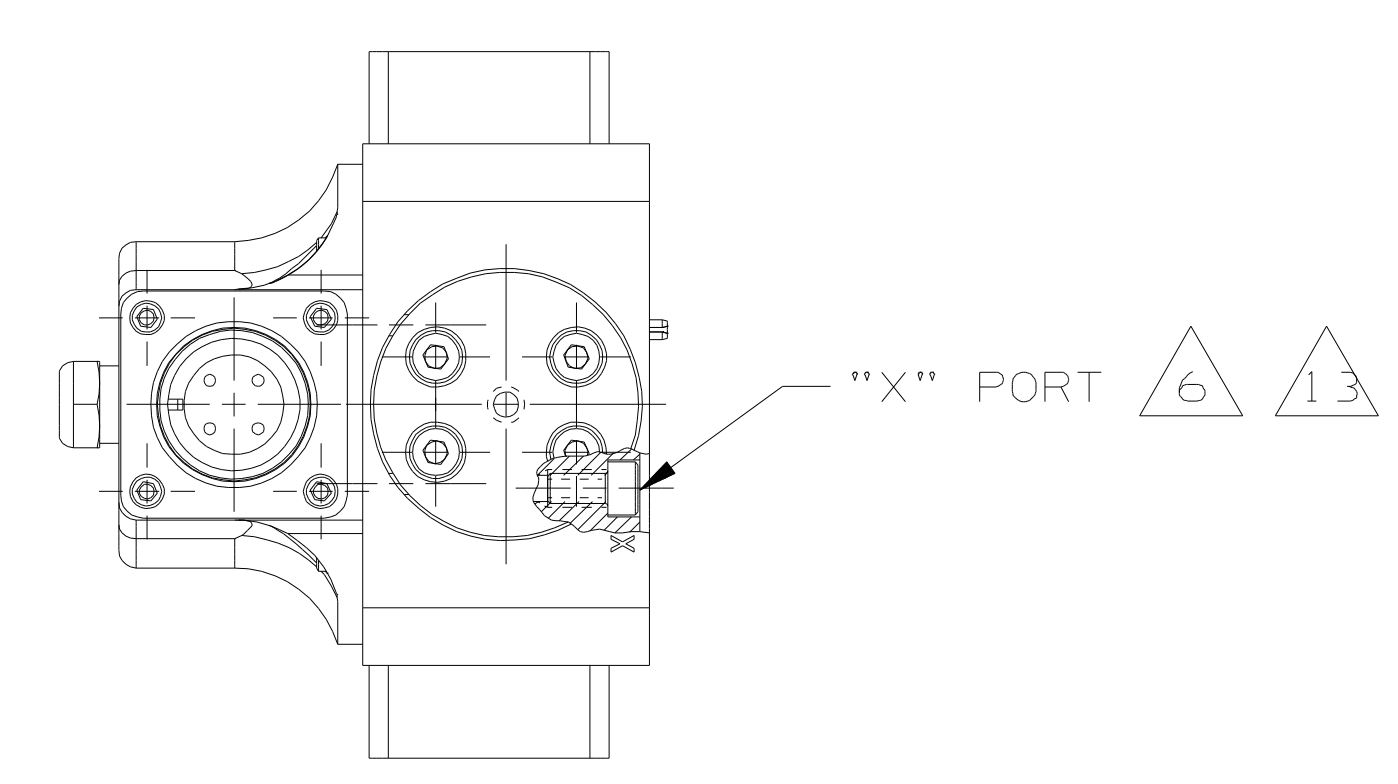
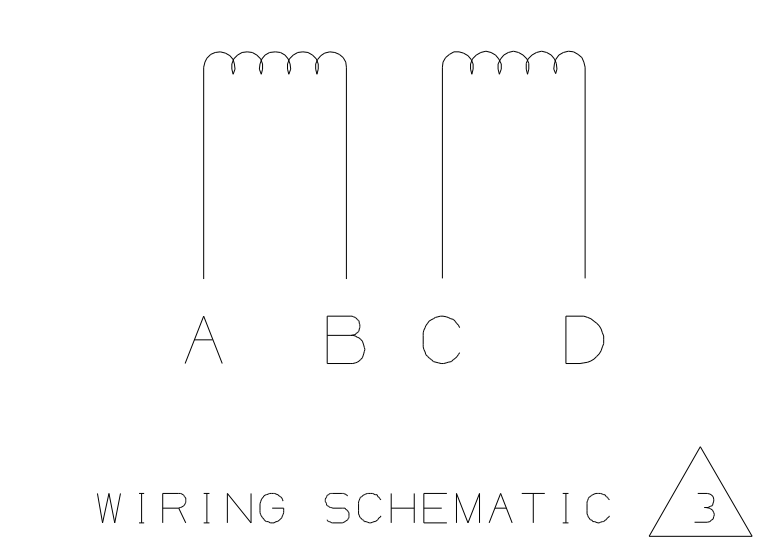
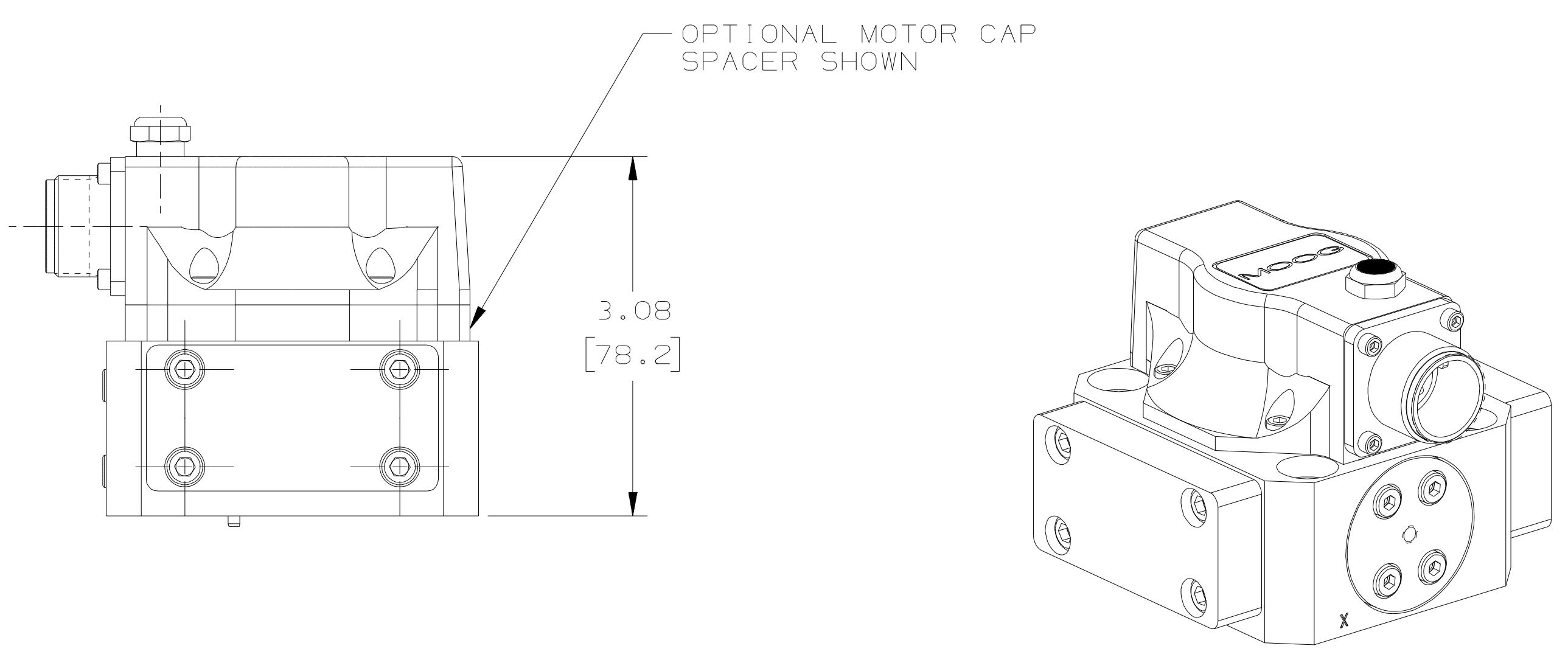
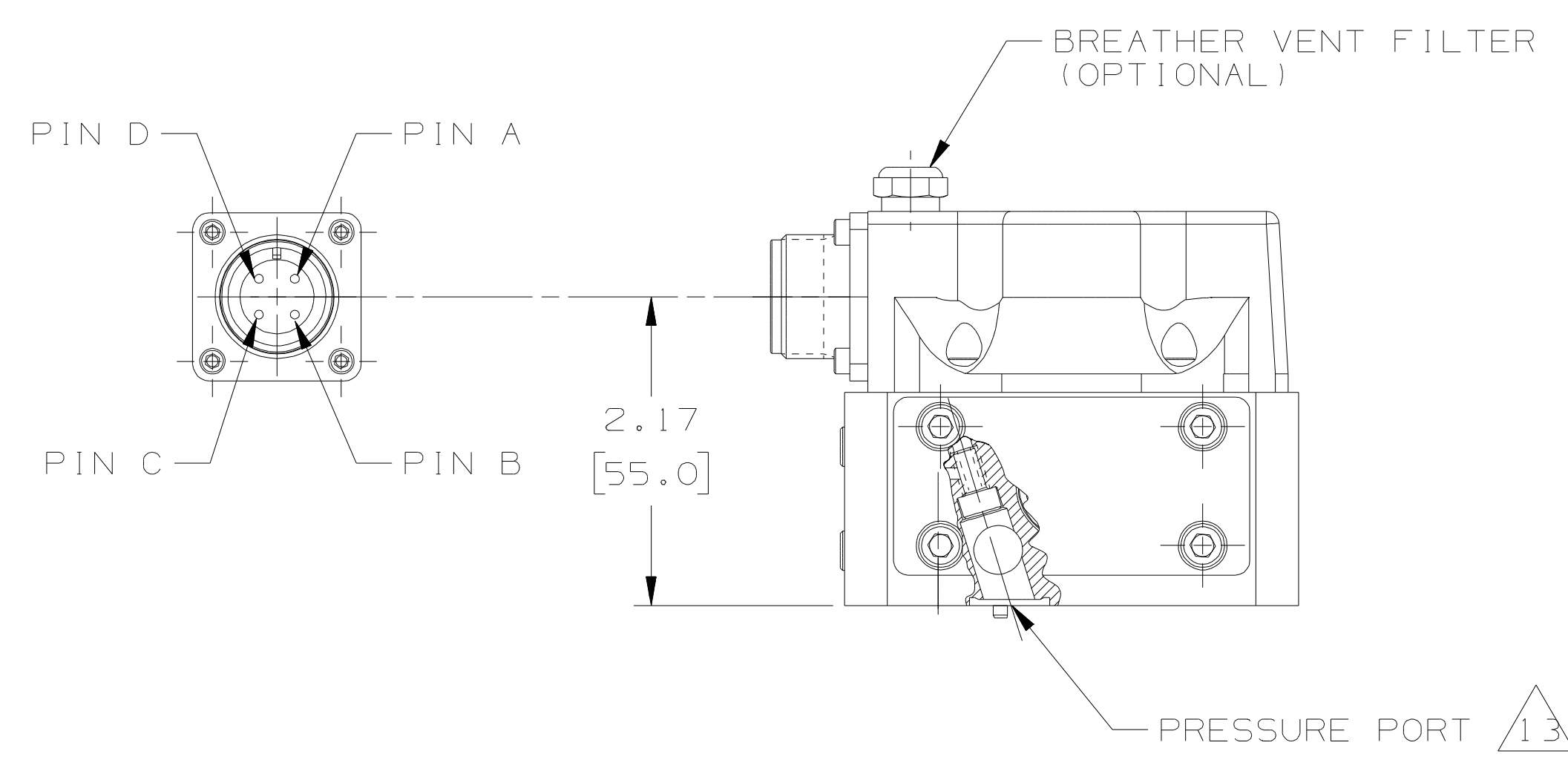


THIS TECHNICAL DATA/DRAWING/DOCUMENT CONTAINS MOOG PROPRIETARY AND CONFIDENTIAL INFORMATION. SUBSIDIARIES EXCEPT AS EXPRESSLY GRANTED BY CONTRACT OR BY OPERATION OF LAW AND IS RESTRICTED TO USE BY ONLY MOOG EMPLOYEES AND OTHER PERSONS AUTHORIZED IN WRITING BY MOOG OR AS EXPRESSLY GRANTED BY CONTRACT OR BY OPERATION OF LAW. NO PORTION OF THIS DATA/DRAWING/DOCUMENT BE REPRODUCED OR TRANSMITTED IN ANY FORM OR BY ANY MEANS, ELECTRONIC OR MECHANICAL, INCLUDING PHOTOCOPYING, RECORDING, OR BY ANY INFORMATION STORAGE AND RETRIEVAL SYSTEM, WITHOUT THE WRITTEN PERMISSION OF MOOG INC. OR MOOG INC. SUBSIDIARY.

ZONE	REV	DESCRIPTION	DATE	APPROVED
H	SEE	EO UE1022246	20080527	JGM/MEL
J	SEE	EO UE1023219	20080814	KJY/MEL
K	SEE	EO UE1026217	20090127	KJY/MEL
L	SEE	EO UE1038220	20110630	KJY/DRK
M	SEE	EO UE1038645	20110729	KJY/DRK

- NOTES:
- FLUID: INDUSTRIAL TYPE PETROLEUM BASE HYDRAULIC FLUID. RECOMMENDED CLEANLINESS:
FOR NORMAL LIFE - ISO 4406 < 16/14/11
FOR LONGER LIFE - ISO 4406 < 15/13/10
 - OPERATING TEMPERATURE RANGE: -20°F TO +275°F
[-29°C TO +135°C].
 - VALVE PHASING: FLOW OUT OF PORT NO."B" WILL RESULT WHEN:
SERIES OPERATION: B & C TIED, A PLUS, D MINUS.
PARALLEL OPERATION: A & C PLUS, B & D MINUS.
SINGLE OPERATION: A PLUS, B MINUS OR C PLUS, D MINUS
 - PORTS: C'BORED NOMINAL .563 [14.30] O.D. X .055 [1.40] DEEP
[ϕ .008 [0.203]].
 - 4 PORT O-RINGS ARE .070 [1.78] SECTION X .426 [10.82] I.D. HAVING COMPATIBLE O-RING COMPOUND (REF UNIVERSAL SIZE -013).
"X" PORT O-RING IS .070 X .364 I.D. HAVING COMPATIBLE ORING COMPOUND (REF. UNIVERSAL SIZE -012).
 - "X" PORT .295 [7.49] DIA, C'BORE NOMINAL .500 [12.70] O.D. X .052 [1.32] DEEP [ϕ .008 [0.203]].
 - SURFACE TO WHICH VALVE IS MOUNTED REQUIRES $\sqrt{.32 / 1.6}$, FLAT WITHIN .001 [0.025] TIR.
 - DIMENSIONS WITHOUT TOLERANCE ARE FOR REFERENCE ONLY.
 - ELECTRICAL CONNECTOR MATES WITH MS3106-14S-2S OR EQUIVALENT.
 - NULL ADJUST: FLOW OUT OF PORT "B" IS OBTAINED WITH CLOCKWISE ROTATION OF NULL ADJUST PIN.
 - SUGGESTED MOUNTING SCREWS: .312-18 X 1.750 LONG (M8 X 45) SOCKET HEAD SCREWS (4 REQUIRED).
 - DIMENSIONS IN BRACKETS () ARE IN MILLIMETERS.
 - ACTIVATE "X" PORT: REMOVE PLUG (M4 SOCKET HEAD SCREW) AND SEAL WASHER IN "X" PORT AND MOVE TO "PRESSURE PORT".
DEACTIVATE "X" PORT: REVERSE ABOVE OPERATION.



INTERNATIONAL PART

QTY	REGD	6761 SERIES	INSTALLATION, GLOBAL BODY	BALLOON NO.
		PART OR IDENTIFYING NO.	NOMENCLATURE OR DESCRIPTION	
PARTS LIST				
INTERPRET DRAWING PER MIL-STD-103 DIMENSIONING AND TOLERANCING PER ASME Y14.5M-1994		CONTRACT NO.	MOOG INC.	
UNLESS OTHERWISE SPECIFIED: DIMENSIONS: .01 .xxx ± .005 ANGULAR: 0° 30' FILLETS: 0.15 EDGES: 0.10 RAD OR CHAM SURFACE ROUGHNESS: PER ANSI Y14.36 & 44.1 1.25 CONCENTRIC DIAMETERS: [1.00] DRILL POINTS: 115° - 140° ALL DIMENSIONS ARE IN INCHES PART TO BE FREE OF BURRS		PREPARED: B.FLYNN 19980612	MOOG INC. EAST AURORA, NY 14052	
THIRD ANGLE PROJECTION		CHECKED:	TITLE: INSTALLATION, 6761 SERIES VALVE (GLOBAL BODY)	
NEXT ASSEMBLY		DES ENGR: X.Z.	SIZE: E 94697	
USED ON		PRD ENGR:	CAGE CODE: C39132	
		APL ENGR:	SCALE: 1/1	
		MFG:	SHEET 1 OF 1	
		QUAL:	GRAPHICS DATA BASE	