

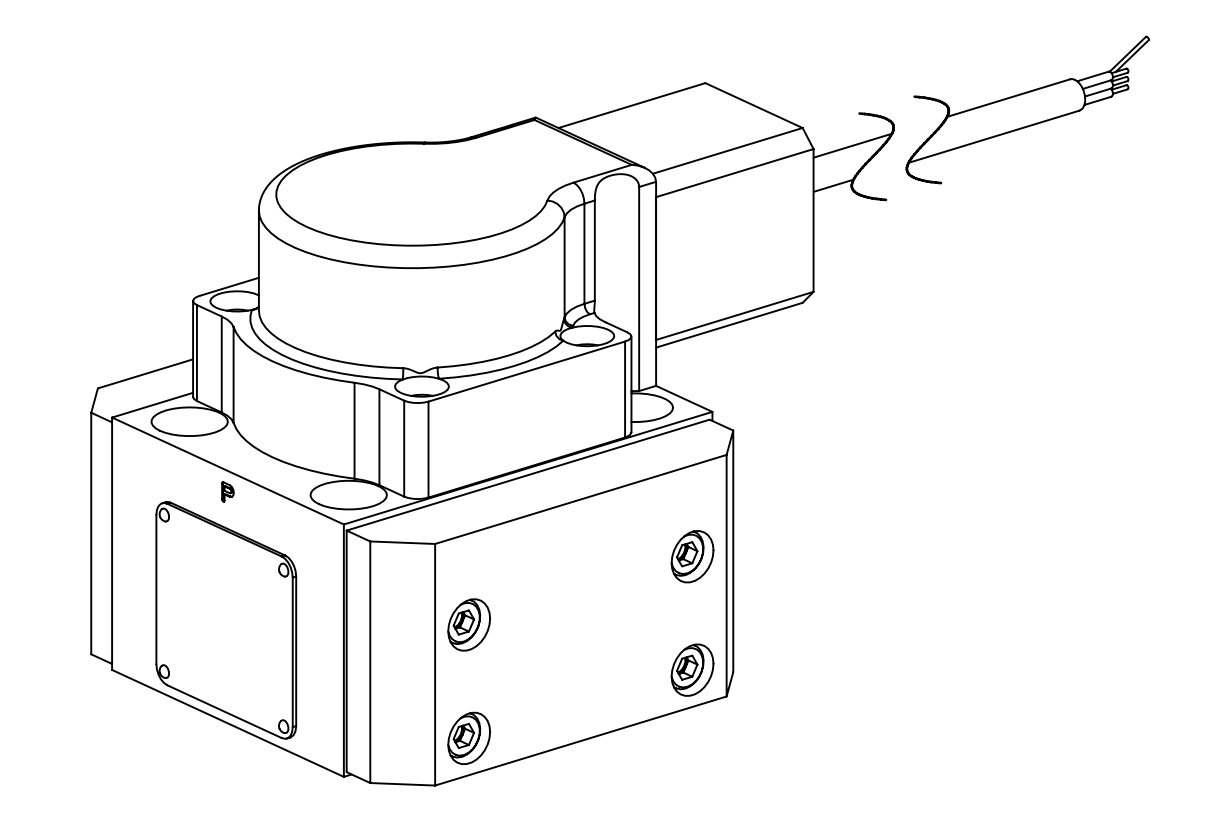
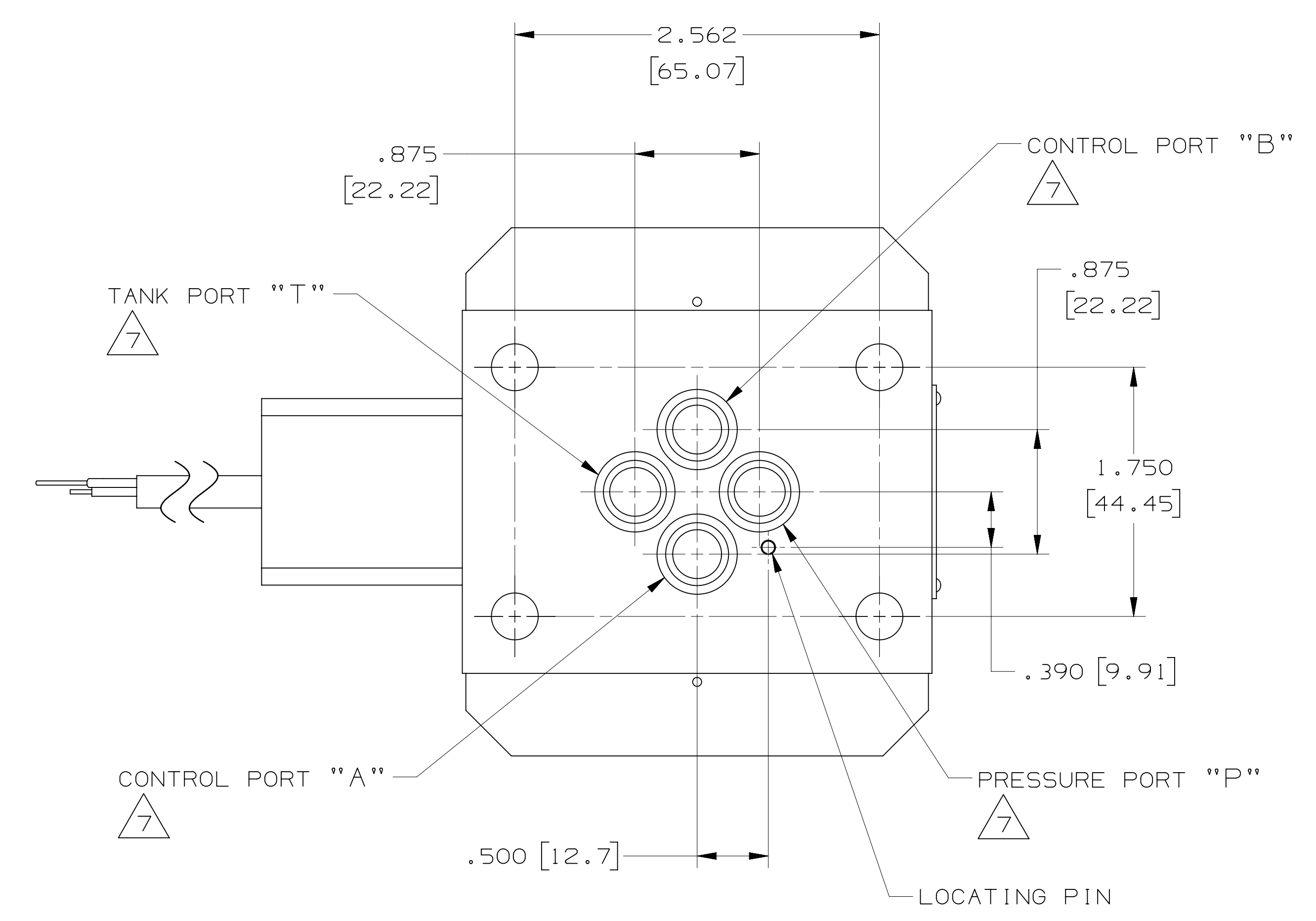
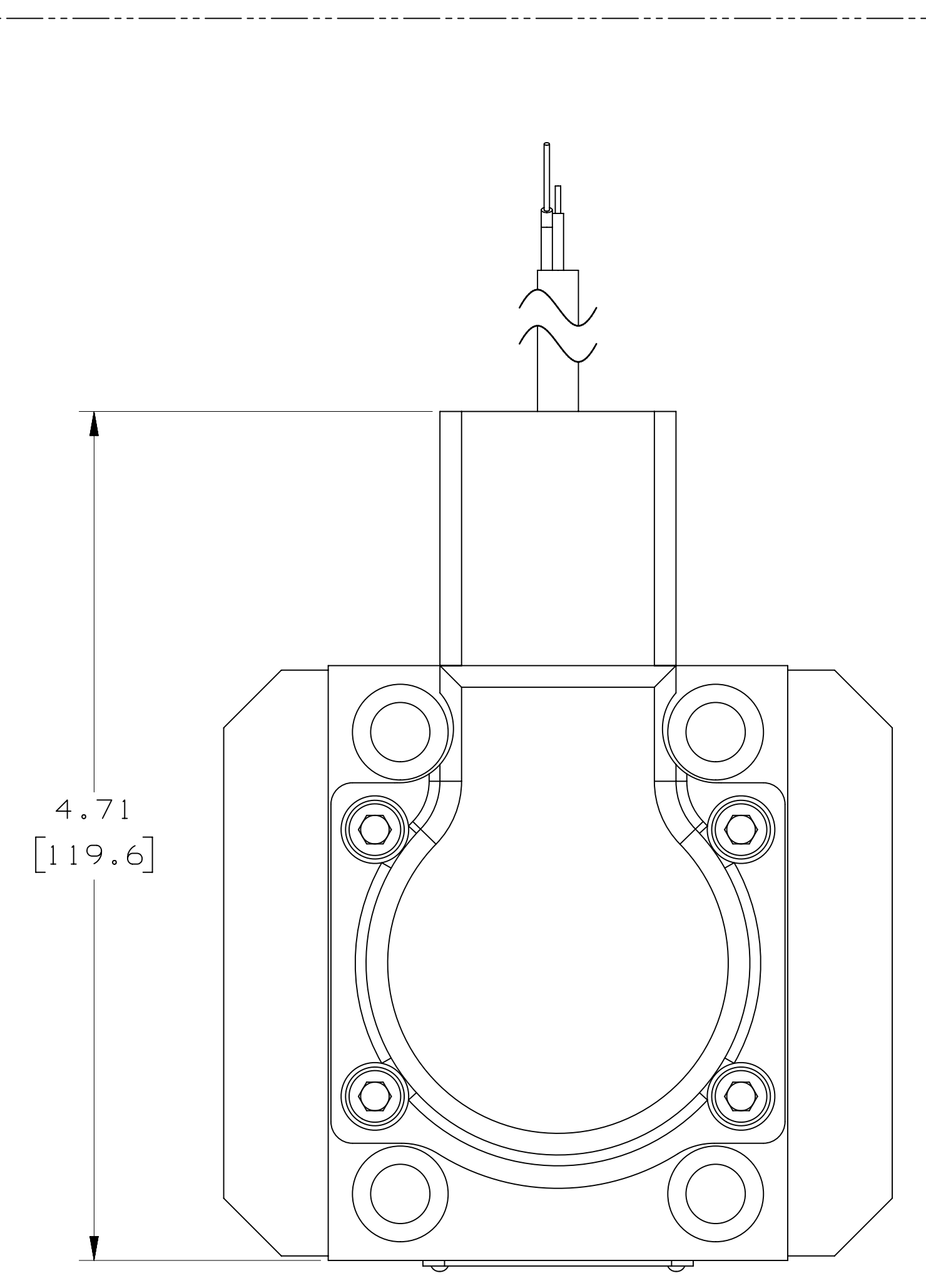
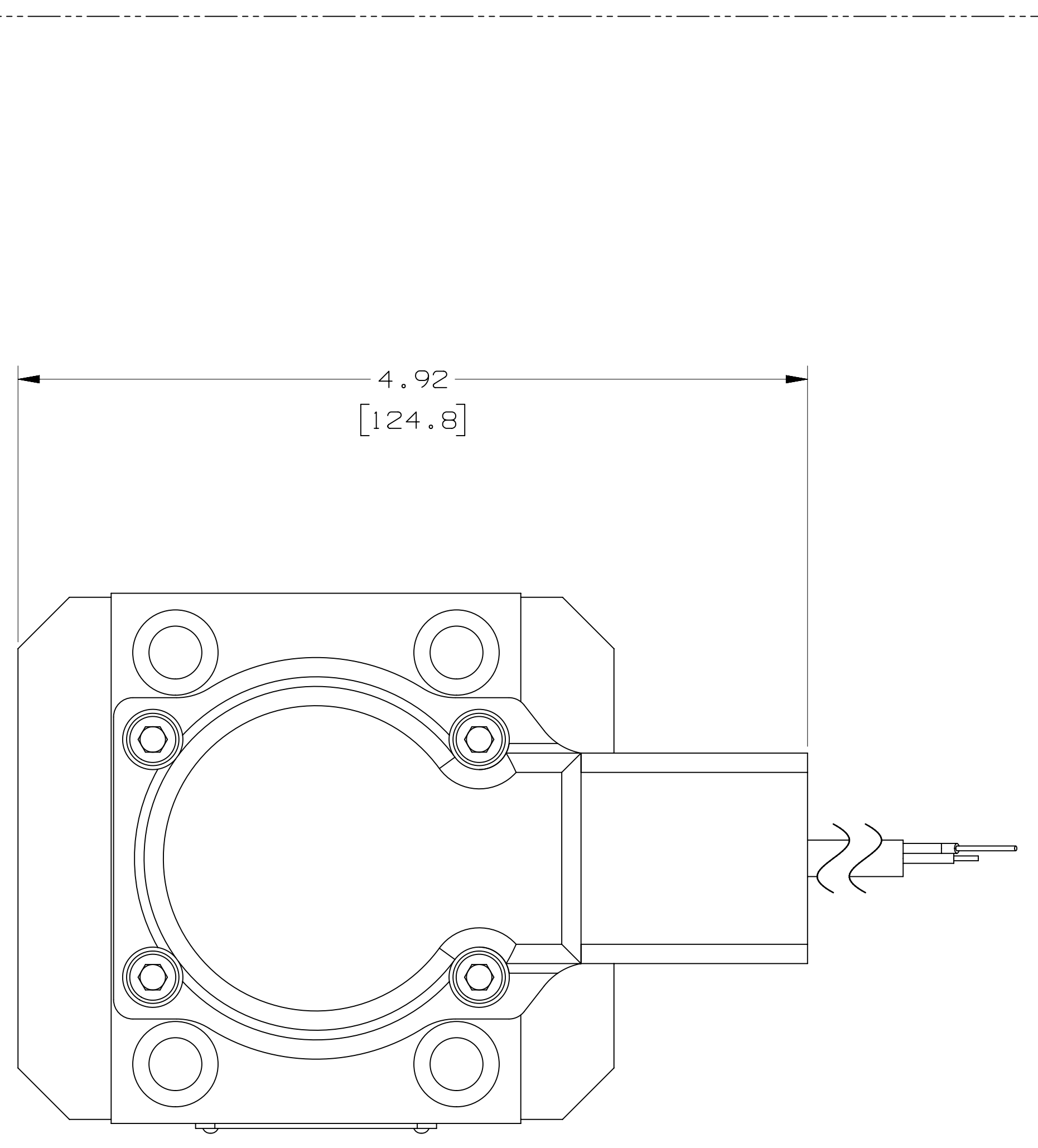
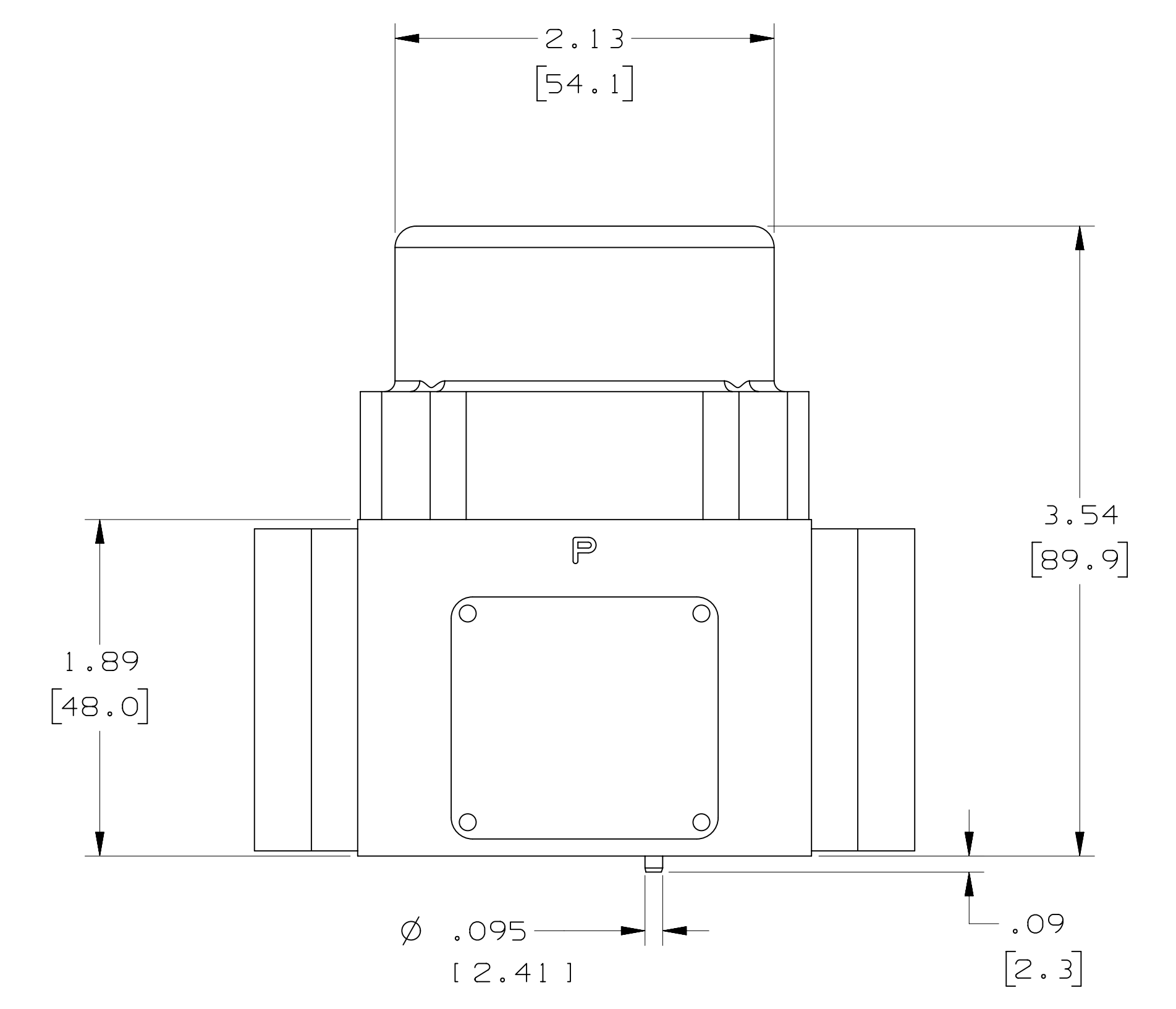
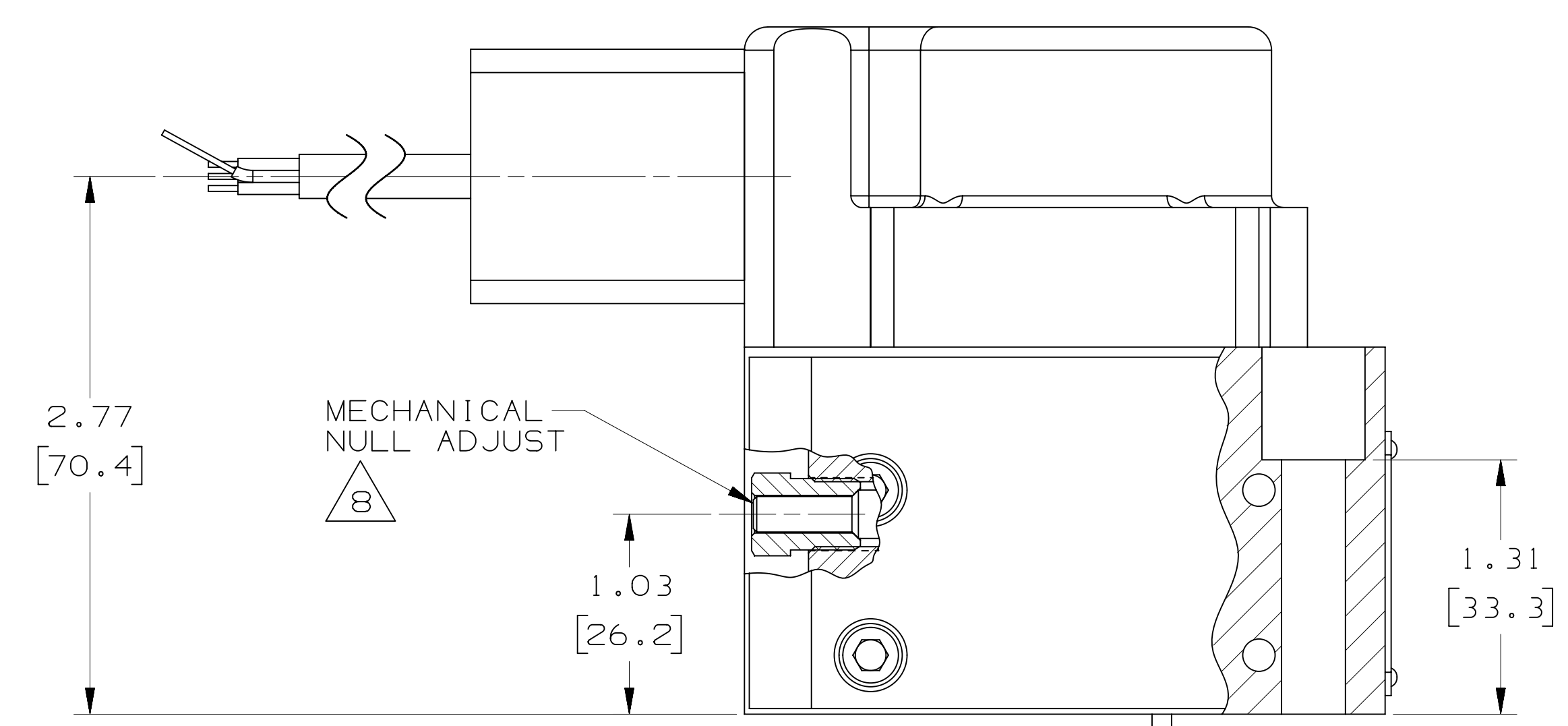
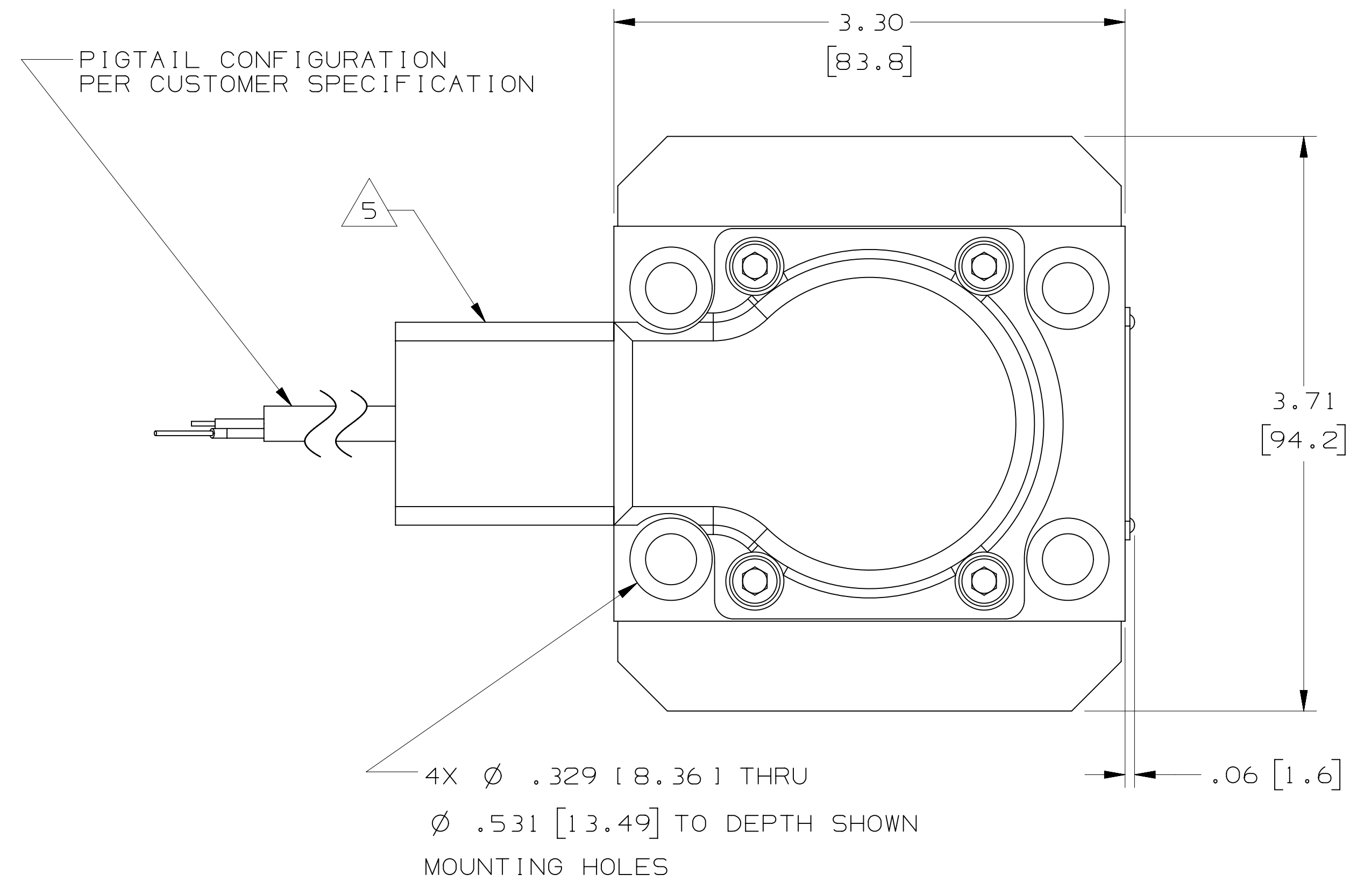
ZONE		REV	DESCRIPTION	DATE	APPROVED
		-	EO UE1063707: RELEASE	20170510	MJN/MEL

THIS TECHNICAL DATA DRAWING/DOCUMENT CONTAINS MOOG PROPRIETARY AND CONFIDENTIAL INFORMATION. SUBSIDIARIES EXCEPT AS EXPRESSLY GRANTED BY CONTRACT OR BY OPERATION OF LAW AND IS RESTRICTED TO USE BY ONLY MOOG EMPLOYEES AND OTHER PERSONS AUTHORIZED IN WRITING BY MOOG OR AS EXPRESSLY GRANTED BY CONTRACT OR BY OPERATION OF LAW. NO PORTION OF THIS DATA DRAWING/DOCUMENT SHALL BE REPRODUCED OR COPIED OR FURNISHED IN WHOLE OR IN PART TO OTHERS OR USED BY OTHERS FOR ANY PURPOSE WHATSOEVER EXCEPT AS SPECIFICALLY AUTHORIZED IN WRITING BY MOOG INC. OR MOOG INC. SUBSIDIARY.

THIS DOCUMENT CONTAINS TECHNOLOGY SUBJECT TO THE U.S. EXPORT ADMINISTRATION REGULATIONS (EAR) AND MAY NOT BE EXPORTED OR TRANSFERRED TO ANY UNLICENSED PERSON, ENTITY, OR COMPANY, BY ANY MEANS, OR FOR END USES REQUIRING A LICENSE, WITHOUT PRIOR WRITTEN APPROVAL FROM THE U.S. DEPARTMENT OF COMMERCE, BUREAU OF INDUSTRY AND SECURITY (BIS). DIVERSION CONTRARY TO U.S. LAW IS PROHIBITED.

NOTES:

- FLUID:
TYPE: DEPENDENT ON SEAL MATERIAL: SEE TYPE CODE POSITION "8" ON SHEET 2.
RECOMMENDED VISCOSITY RANGE AT 38°C [100°F]: 10 TO 97 mm²/s (cSt).
CLEANLINESS LEVEL PER ISO 4406:
NORMAL LIFE: 17/14/11
LONG LIFE: 15/13/10
- STANDARD TEMPERATURE RANGE:
AMBIENT: -40°F TO +176°F [-40°C TO +80°C].
PROCESS: 248°F [+120°C] MAX
- MAXIMUM OPERATING PRESSURE: SEE TYPE CODE POSITION "3" ON SHEET 2.
- STANDARD POLARITY OPERATION: (REFERENCE ELECTRICAL SCHEMATIC ON SHEET 2)
FLOWOUT PORT "B" WILL RESULT WHEN:
SERIES: GREEN & YELLOW TIED, BROWN +, VIOLET -
PARALLEL: BROWN & YELLOW TIED +, GREEN & VIOLET TIED -
SINGLE: BROWN+, GREEN- OR YELLOW+, VIOLET-
- POTTED ELECTRICAL CONNECTOR: SEE TYPE CODE POSITION "9" ON SHEET 2.
- DIMENSIONS ARE FOR REFERENCE ONLY.
DIMENSIONS IN BRACKETS [] ARE IN MILLIMETERS.
- PORTS P, T, A, B:
□ ∅ .563 [14.30] ± .052 [1.32].
O-RINGS: .426 [10.82] I.D. X .070 [1.78] CROSS SECTION (UNIVERSAL SIZE -013).
- FOR INFORMATION/INSTRUCTION ON THE FOLLOWING, REFER TO:
"78N/760N SERIES INSTALLATION AND OPERATION INSTRUCTION" (CDS6857),
AVAILABLE ON www.moog.com/installation.
A.) NULL ADJUSTMENT.
9. SURFACE TO WHICH VALVE IS MOUNTED REQUIRES $\sqrt{.32 / 0.8}$ [1.001 [0.025]].
10. SUGGESTED MOUNTING SCREWS: .312-18 X 2.00 LONG [M8 X 50 LONG] SOCKET HEAD CAP SCREWS.
11. FOR ACCESSORIES AND SPARE PARTS SEE 760 SERIES CATALOG (CDL6335) ON www.moog.com.



REFERENCE VIEW
SCALE: 3/4

REFERENCE MOUNTING PATTERN SPECIFICATION
ISO 10372-04-04-0-92

CONNECTOR ORIENTATION OVER CONTROL PORT "A"
OPTIONAL CONNECTOR ORIENTATION OVER CONTROL PORT "B" (180°) WOULD YIELD THE SAME DIMENSIONS
SEE TYPE CODE POSITION "9" ON SHEET 2

CONNECTOR ORIENTATION OVER TANK PORT "T"
OPTIONAL CONNECTOR ORIENTATION OVER PRESSURE PORT "P" (180°) WOULD YIELD THE SAME DIMENSIONS
SEE TYPE CODE POSITION "9" ON SHEET 2

INTERNATIONAL PART

LAST SECTION/DATUM	USED ON	UNLESS OTHERWISE SPECIFIED: DIMENSIONS: .01 .xxx ± .005 ANGULAR: 0° 30' FILLETS: R.15 EDGES: .010 SURFACE FINISH: 125 CONCENTRIC DIAMETERS: [1.00] DRAUGHT POINTS: 1:1 ALL DIMENSIONS ARE IN INCHES PART TO BE FREE OF BURRS	INTERPRET DRAWING PER MIL-STD-100 DIMENSIONING AND TOLERANCING PER ASME Y14.5M-1994	CONTRACT NO.	MOOG INC.
THIRD ANGLE PROJECTION	NEXT ASSEMBLY			PREPARED: M. NELREUTER 20170417	MOOG INC., EAST AURORA, NY 14052
				CHECKED:	TITLE: INSTALLATION, SERVO VALVE, -760N SERIES
				DES ENGR: M. LUDLOW 20170509	SIZE: E 94697
				PRD ENGR:	CAGE CODE: CC 35862
				APL ENGR:	DWG NO. CC 35862
				MFG:	SCALE: 3/2
				DUAL:	SHEET 1 OF 2

PART NO. CC 35862

TYPE CODE DESIGNATION - AS SHOWN ON NAMEPLATE OF SERVO VALVE.
(EXAMPLE: H19F0FB4V3L)

POSITION	1	2	3	4	5	6	7	8	9	10	11
CODE	H	1	9	F	0	F	B	4	V	3	L

POSITION "3" (PRESSURE RATINGS):

CODE	MAXIMUM DESIGN (OPERATING)			NORMAL TEST			PROOF		
	MPA	BAR	PSI	MPA	BAR	PSI	MPA	BAR	PSI
F (ALUMINUM BODY)	21.0	210	3000	21.0	210	3000	31.5	315	4500

POSITION "8" (SEAL MATERIAL):

CODE	MATERIAL
N	NBR (BUNA)
V	FKM (VITON)

POSITION "9" (VALVE CONNECTOR, TYPE AND ORIENTATION OVER PORT):

CODE	TYPE	ORIENTATION	MATES WITH
X	SPECIAL VERSIONS		
1	4 LEAD PIGTAIL	CONNECTOR OVER PORT B (C2)	1/2-14 NPT CONDUIT
2	4 LEAD PIGTAIL	CONNECTOR OVER PORT A (C1)	1/2-14 NPT CONDUIT
3	4 LEAD PIGTAIL	CONNECTOR OVER PORT P	1/2-14 NPT CONDUIT
4	4 LEAD PIGTAIL	CONNECTOR OVER PORT T	1/2-14 NPT CONDUIT

POSITION "11" (SPECIAL VERSIONS):

CODE	VALVE VERSION
X	SPECIAL VERSION

