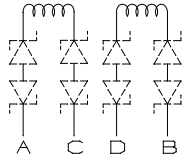
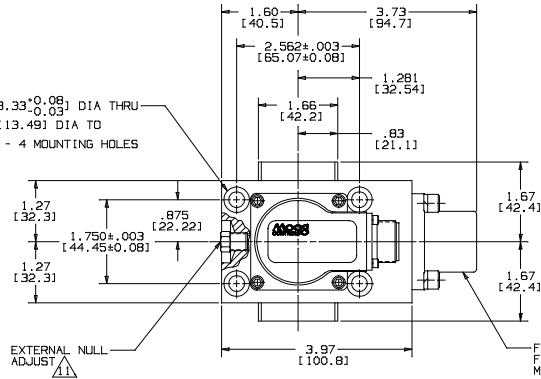


DRW. NO. B52692		REV. 1	
ZONE REV.		REVISIONS	
1	ECONOMIS15: RELEASED	DATE	APPROVED
		12-11-89	RJC/RDM



WIRING SCHEMATIC  $\Delta$

.329<sup>+0.003</sup><sub>-.001</sub> [8.33<sup>+0.08</sup><sub>-0.03</sub>] DIA THRU  
 CBORE .531 [13.49] DIA TO  
 DEPTH SHOWN - 4 MOUNTING HOLES

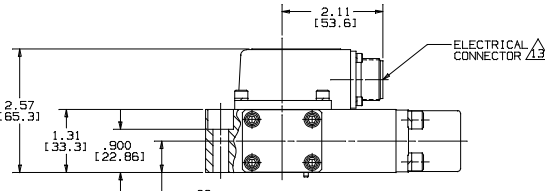


EXTERNAL NULL ADJUST  $\Delta$

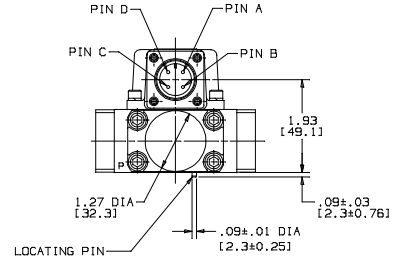
FIELD REPLACEABLE FIRST STAGE FILTER MOOG PART NO. 22050

NOTES:

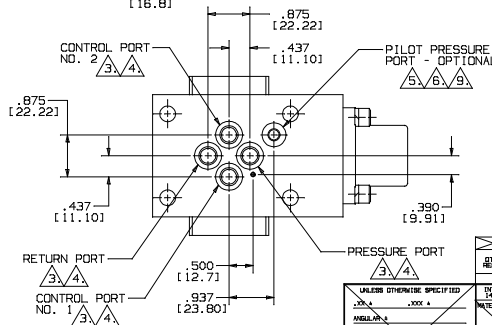
- FLUID: MIL-H-5606A OR INDUSTRIAL TYPE PETROLEUM BASE HYDRAULIC FLUID. VISCOSITY: 60-450 SUS AT 100°F [10-97 cStk AT 38°C]. FLUID CLEANLINESS: ISO 4406 CODE 16/13 MAX.
- OPERATING TEMPERATURE RANGE: -40°F TO +275°F [-40°C TO +135°C].
- P.R.C1 & C2 PORTS: .312 [7.92] DIA CBORED NOMINALLY .562 [14.27] OD x .055 [1.40] DEEP.
- P.R.C1 & C2 PORT O-RINGS: .070 [1.78] SECT. x .426 [10.82] ID (UNIVERSAL DASH NO. 013).
- PILOT PRESSURE PORT: .213 [5.41] DIA CBORED NOMINALLY .500 [12.70] OD x .055 [1.40] DEEP.
- PILOT PRESSURE PORT O-RING: .070 [1.78] SECT. x .364 [9.25] ID (UNIVERSAL DASH NO. 012).
- SURFACE TO WHICH VALVE IS MOUNTED REQUIRES  $32\sqrt{10.8}$  FINISH. FLAT WITHIN .001 [0.03] TIR.
- VALVE PHASING: FLOW OUT PORT NO. 2 WILL RESULT WHEN: SERIES COIL: C & D TIED; A+, B-; PARALLEL COILS: A & D TIED; B & C TIED; A & D+, B & C-
- VALVES ARE SUPPLIED WITH PROVISIONS FOR EITHER INTERNAL OR EXTERNAL PORTING OF FIRST STAGE PILOT PRESSURE.
- COMPRESSED OIL VOLUME FOR ONE PISTON PORT = .117 IN<sup>3</sup>.
- FLOW OUT C2 PORT: INCREASE WITH CLOCKWISE ROTATION.
- SUGGESTED MOUNTING SCREWS: .312-18 UNC X 1.62 [M8 X 40] LG. SOCKET HEAD CAP SCREWS - 4 REQUIRED.
- ELECTRICAL CONNECTOR MATES WITH MOOG CONTROLS P/N 49054F-145-2S (MS3106-145-2S) OR EQUIVALENT.
- DIMENSIONS IN BRACKETS [ ] ARE IN MILLIMETERS.
- DIMENSIONS WITHOUT TOLERANCE ARE FOR REFERENCE ONLY.



ELECTRICAL CONNECTOR  $\Delta$



LOCATING PIN



B52692		INSTALLATION, SERVOVALVE																									
REV. NO.	REV. DATE	IDENTIFYING NO.	NOMENCLATURE OR DESCRIPTION																								
			FROM NO. FROM NO.																								
PARTS LIST																											
<table border="1"> <tr> <td>PREPARED</td> <td>R. CLARKE</td> <td>11/18/88</td> </tr> <tr> <td>CHECKED</td> <td>NM</td> <td>11/18/88</td> </tr> <tr> <td>MOD ENGR</td> <td>TFP</td> <td>11/18/88</td> </tr> <tr> <td>DESIGN ENGR</td> <td></td> <td></td> </tr> <tr> <td>PROD ENGR</td> <td>MF</td> <td>11/21/88</td> </tr> <tr> <td>APPL ENGR</td> <td></td> <td></td> </tr> <tr> <td>MFG</td> <td></td> <td></td> </tr> <tr> <td>QUAL</td> <td></td> <td></td> </tr> </table>				PREPARED	R. CLARKE	11/18/88	CHECKED	NM	11/18/88	MOD ENGR	TFP	11/18/88	DESIGN ENGR			PROD ENGR	MF	11/21/88	APPL ENGR			MFG			QUAL		
PREPARED	R. CLARKE	11/18/88																									
CHECKED	NM	11/18/88																									
MOD ENGR	TFP	11/18/88																									
DESIGN ENGR																											
PROD ENGR	MF	11/21/88																									
APPL ENGR																											
MFG																											
QUAL																											
UNLESS OTHERWISE SPECIFIED DIMENSIONS ARE IN INCHES FINISHES: .0008 EDGES: R20 OR CHAM SURFACE TOLERANCES: .0008 DRILL POINTS: 118°-140° PARTS TO BE FREE OF BURRS		MOOG MOOG INC., EAST AURORA, NY 14052 INSTALLATION, MODEL 730 SERIES SERVOVALVE SIZE: D CASE CODE: 94697 DRAWING NO: B52692 SCALE: 1/1 HTS SHEET																									