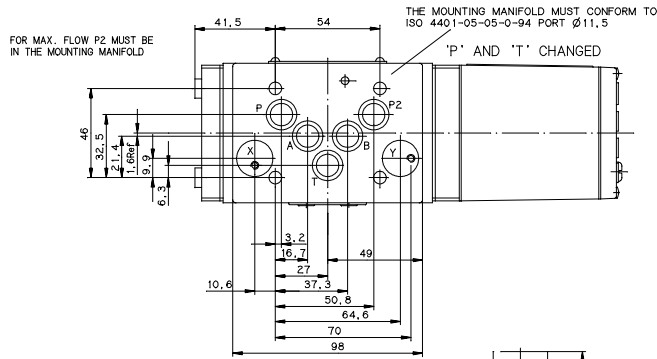


TYPE DESIGNATION  
C55372

HYDRAULIC SCHEMATIC  
DWG-NO B90747

MAIN SPOOL TYPE



TECHNICAL DATA

OPERATING PRESSURE  
MAX 350 BAR  
15 TO 280 BAR : WITH DROPPING ORIFICE MAX 350 BAR

PILOT STAGE  
350 BAR

RETURN PRESSURE MAX. IN 'T'  
210 BAR

EXTERNAL RETURN  
INTERNAL RETURN  
MINERAL OIL BASED HYDRAULIC FLUID (DIN 51524, PART 1 TO 3)

OPERATING FLUID  
RECOMMENDED  
15 TO 45 MM<sup>2</sup>/S  
5 TO 400 MM<sup>2</sup>/S

VISCOSITY ALLOWABLE

FILTER RATING  
FOR NORMAL OPERATION  
B<sub>15</sub> ≥ 75 (15µm ABSOLUTE)  
FOR LONGER LIFE  
P<sub>10</sub> ≥ 75 (10µm ABSOLUTE)

RECOMMENDED CLEANLINESS CLASS  
FOR NORMAL OP  
ISO 4406 <16/13  
FOR LONGER LIFE  
ISO 4406 <14/11

TEMPERATURE RANGE  
AMBIENT  
-20°C TO +60°C  
FLUID  
-20°C TO +80°C

SEAL MATERIAL  
NBR (OTHERS ON REQUEST)

O-RINGS  
MOOG P/N XXXXX-004 (Ø12, 4x1, 8) (5x)  
MOOG P/N XXXXX-011 (Ø15, 6x1, 8) (2x)

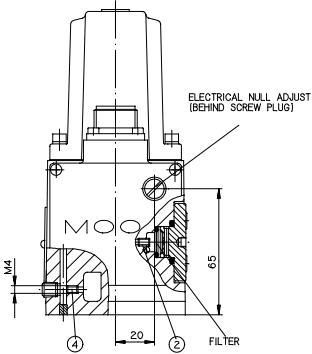
MOUNTING SURFACE  
ROUGHNESS  
FLATNESS 0,01MM OVER A DISTANCE OF 100MM  
RA BETTER THAN 0,8µm

MOUNTING BOLTS  
REQUIRED TORQUE  
M 6X60 EN ISO 4762-10.9 (NOT INCLUDED IN DELIVERY)

RATED FLOW  
MAX 80 L/MIN  
AT ΔP<sub>V</sub> = 5 BAR PER LAND  
± 3,0 MM  
± 3,6 MM

MAIN SPOOL STROKE, MAX  
STROKE LIMIT  
EN60529: IP65 (WITH MATING CONNECTOR MOUNTED)

DEGREE OF PROTECTION  
SPOOL POSITION  
SEE TABLE



TYPE DESIGNATION	SYSTEM PRESSURE	PILOT PRESSURE OR INTERNAL USE	SPOOL POSITION	VALVE ELECTRONICS
O	≥15 BAR	≥15 BAR	UNDEFINED	
A	≥15 BAR	≥15 BAR	P → B A → T	ON OR OFF
	>15 BAR	< 1 BAR	P → B A → T	WIPER RESIZE
B	≥15 BAR	≥15 BAR	P → A B → T	ON OR OFF
	>15 BAR	< 1 BAR	P → A B → T	WIPER RESIZE

GENERAL REQUIREMENTS

C41088

CONNECTOR  
Z. B. S = 6+PE

SIGNAL TYPE  
Z. B. A = ±10V INPUT ±10V OUTPUT

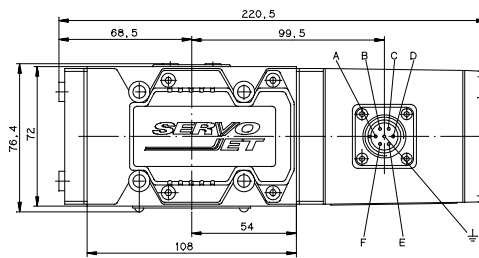
SUPPLY VOLTAGE VALVE ELECTRONIC  
015 = ±15V  
024 = 24V

FAILSAFE FUNCTION OF VALVE ELECTRONIC  
SEE CATALOGUE OR DATA SHEET AM350

Z. B. O = NO ENABLE INPUT

CONVERSION INSTRUCTION

PILOT FLOW SUPPLY	SET SCREW M4x6	PILOT FLOW RETURN	SET SCREW M4x6
INTERNAL P	① CLOSED ② OPEN	INTERNAL T	③ CLOSED ④ OPEN
EXTERNAL X	⑤ CLOSED ⑥ OPEN	EXTERNAL Y	⑦ CLOSED ⑧ OPEN



Item No.	Description	Qty.	Part-No.	Mat. / Rough dim/ Info
	Release alternative specified		M	Zone
	Tolerating principle to DIN ISO 2768-Ⓜ			REVISION
	Dimensions: ± 0,024			DATE
	Surface treatment:			BY
	Process:			
	Layer thickness:			
	Surface quality to ISO 1302			
	Non dimensioned sharp edges			
	Surface texture			
	Size			
	Scale			
	Sheet			
2000	Site	Name	Date	Name
Prep.	Dr.	Flaker	Qual.	
Checked	Dr.	REP	Rev.	21.10.02
Mfg.		Norm		BEK
Mount.		Ext.		

INSTALLATION DRAWING  
5-WAY PROPORTIONAL VALVE  
SERIES D66 I-P 'P' AND 'T' CHANGED

MOOG  
First use  
Drawing-No.: C55372

B&B/Ingenieur/Deutschland  
B&B/Ingenieur/Deutschland  
This is a CAD drawing and must not be edited by hand!