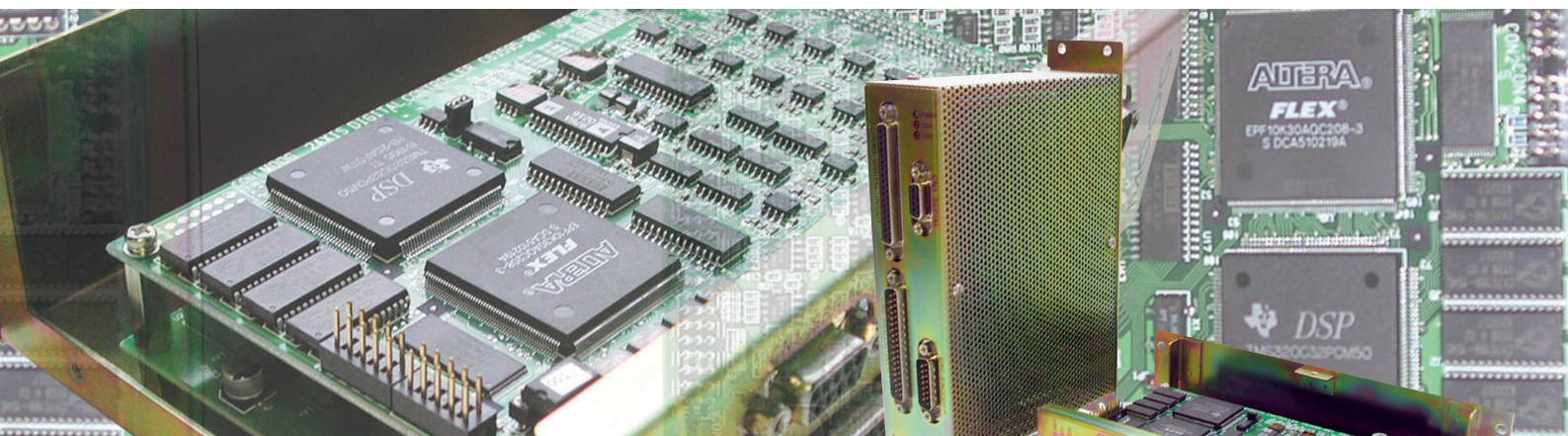


J124-046 Series MMC-Moog Motion Controller For Clamp and V/P Control in Injection Molding



DESCRIPTION:

The MOOG Motion Controller (MMC) J124-046 series is a two axes DSP based control card configured for injection molding machines. The implemented control algorithms allow a tailored closed loop control of all phases of injection process and clamp motion. MMC control package consists of:

1. Control card, equipped with RS422c serial communication
2. Control software
3. GOUI screen files for parameter setups.

For tuning of control parameters GOUI, a Windows based HMI tool is applied. When GOUI software has been installed in the PC and the serial port (RS232c) of PC is connected with MMC control parameters can be adjusted via PC. Final parameter settings can be stored in the integrated flash memory. MMC will work as a standalone controller. Furthermore GOUI offers an oscilloscope function for diagnostic purposes.

FEATURES:

- Standalone controller for:
 - Two injection axes
 - One injection axis and one clamp axis
- Injection process control:
 - Closed loop velocity, pack and hold, backpressure control
- Clamp motion control:
 - Position, velocity, pressure build up, mold protect force control
- Interfaces with either analog or digital type feedback devices
- Real time oscilloscope function for diagnostics purposes
- Up- and downloading of parameters possible:
 - Parameter settings saved in a file and applicable on other machines
 - Parameter settings saved in a file and uploadable for diagnostics purposes

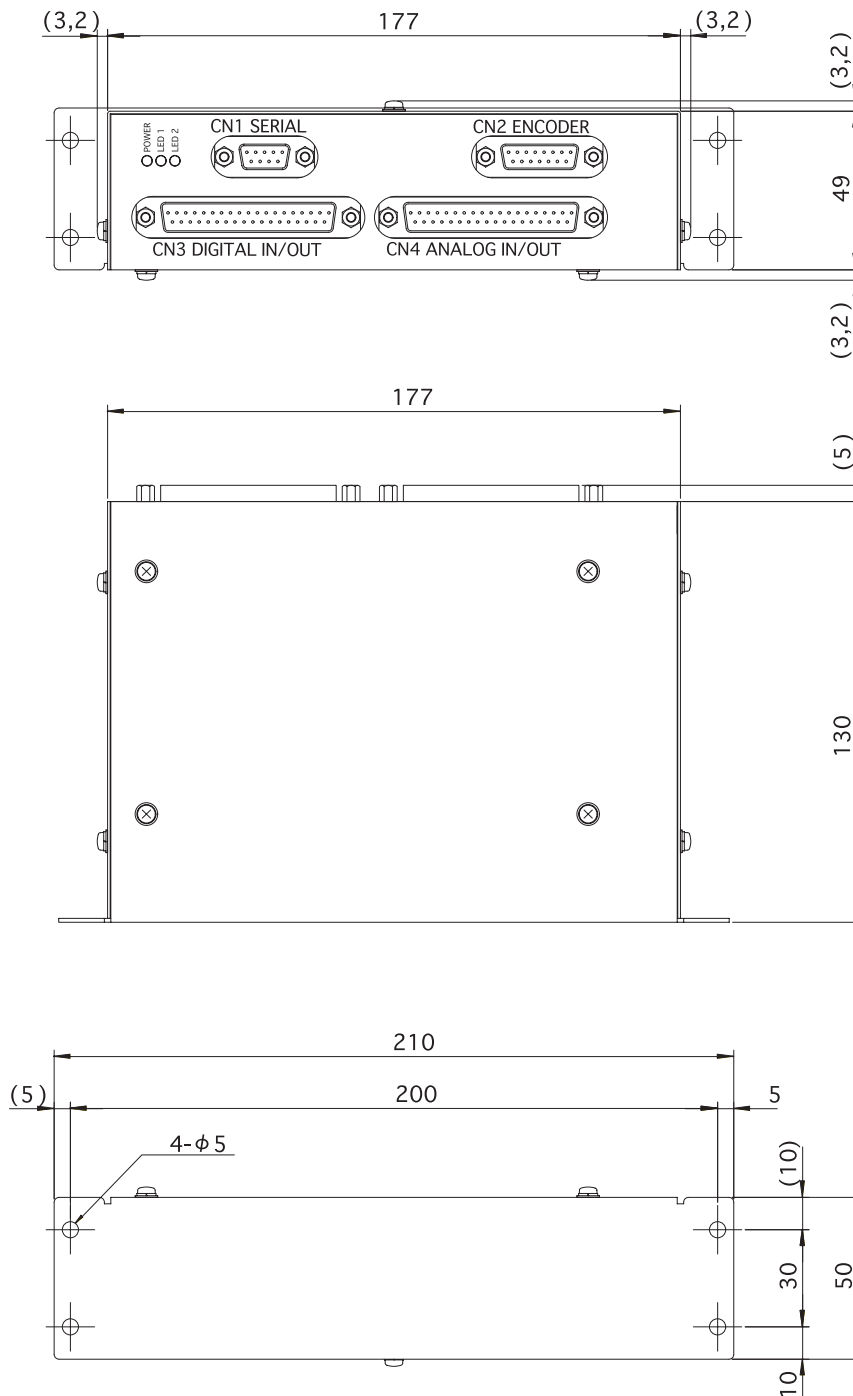
SPECIFICATIONS:

Supply:	24Vdc/0.5A
Analog input:	Differential, 0..+/-10V 100kOhm input resistance 10 ch
Analog output:	+/-10V 1mA @ 10kOhm min. output capacity 4 ch
Analog output for servovalve:	+/-10V or +/-10mA 1mA voltage output capacity 2 ch
Digital input:	15..24Vdc input voltage 2mA min./ch input current 16 ch, sink/source type
Digital output:	15..24V external power 20mA max. output current 16 ch, source type
Encoder input:	Incremental encoder type (A,B,Z) Line driver input type 2 ch, 24bit counter range
Flash memory:	256kByte
Vibration:	10 to 50 Hz/1G
Temperature:	0 to 45 °C
Dimensions:	177W x 130D x 49H
Weight:	0.9kg

TECHNICAL DATA

J124-046

Installation



ORDERING INFORMATION:

MMC for 2 axes injection control: J124-046-001
MMC for 1 axis injection and 1 axis clamp control: J124-046-002
Special configurations can be provided.
Consult your MOOG Sales office to discuss details.