

# Ethernet and High Definition Slip Ring Capsules

## AC7217

### *Ethernet and High Definition (HD) video slip ring capsule*

#### Description

A slip ring can be used in any electromechanical system that requires unrestrained, continuous rotation while transferring video, power and data from a stationary to a rotating structure.

The AC7217, a derivative of our very popular AC6355 series, provides Ethernet and HD-SDI video communication in combination with 2 amp, 5 amp and 10 amp power or data connections and analog coax connections. The Ethernet cable is supplied terminated with a RJ45 connector, and the HD-SDI cable is terminated with a BNC connector, ready to install.

The AC7217 utilizes gold-on-gold contact technology with very low electrical noise for unparalleled performance and provides functional life that exceeds any competitive slip ring.

#### Features

- Compliant with IEEE 802.3 formats:
  - 10BaseT
  - 100BaseTx
  - 100BaseT2
  - 1000BaseT
- Compatible with HD-SDI
- Speeds up to 250 RPM
- 24 and 48 inch lead lengths
- Multiple circuit configurations available
- Sealing to dust and light fluid splash available

#### Benefits

- Compact
- Plug-and-play Ethernet and HD-SDI video connection



#### Typical Applications

- Video over Ethernet
- Motor control
- POE (Power-Over-Ethernet)
- High definition video security
- Pan / tilt systems
- Rotating high definition video displays

# Ethernet and High Definition Slip Ring Capsules

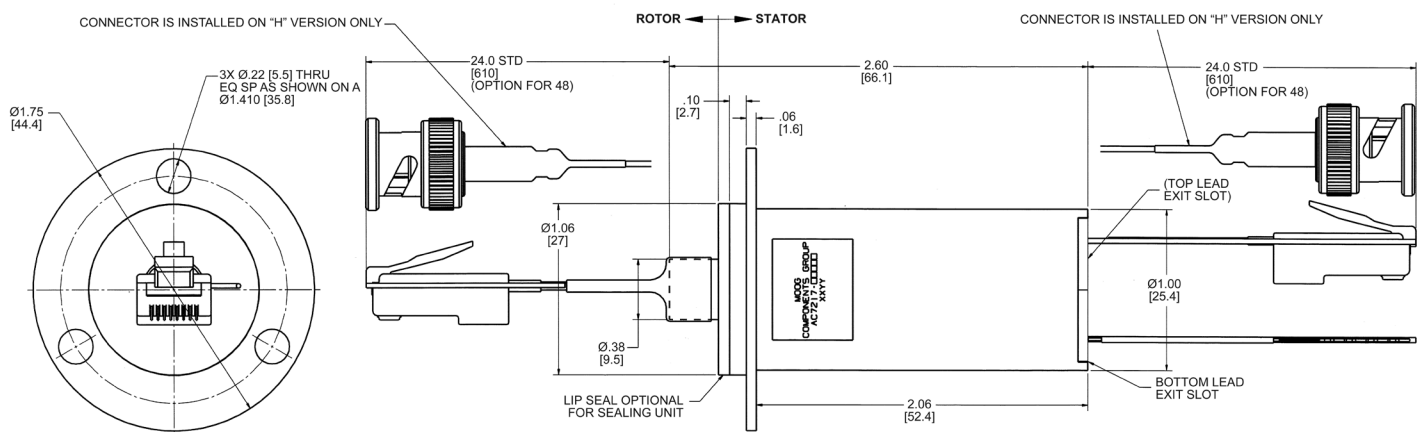
AC7217 Specifications		Options
Operating Speed	250 rpm*	<ul style="list-style-type: none"> <li>• Seals for dust and light fluid splash</li> <li>• Standard 24 inch leads, optional 48 inch</li> <li>• No flange</li> <li>• Metal housing</li> <li>• IP 65 rated slip ring available (see P/N AC7356 for dimensions)</li> </ul>
Ethernet Connections	10 / 100BaseT and 1000BaseT	
Video Connections	HD-SDI, 50 / 75 ohm coax	
Circuit Options	Ethernet plus, coax, 2 amp, 5 amp and 10 amp	
Voltage	240 VAC on power circuits	
Temperature Range	-40°C to +80°C	
Contact Material	Gold	
Current Rating	2 to 10 amps	

\*Please note that the operational life of the unit is dependent upon rotational speed, environment and temperature.

Circuit Table							
Part #	Continuous Current (amps)			Coaxial			Ethernet
	2	5	10	RG178	RG179	HD-SDI	1000BaseT (or 2 100BaseT)
AC7217-C	13			2			1
AC7217-H	13					1	1
AC7217-N	23						1
AC7217-G	10						2
AC7217-K	13				2		1
AC7217-V	15	4					1
AC7217-X	15		2				1

**NOTE:** Contact factory for details on wire colors

## AC7217 Dimensions



Dimensions in inches [mm]