

## AC7257

### Siemens® S120M Hybrid Cable Slip Ring

#### Description

A slip ring can be used in any electromechanical system that requires unrestrained, continuous rotation while transferring power and data from a stationary to a rotating structure.

The AC7257 is a derivative of our popular AC6275 series, and provides power and signal communications via the Siemens® SINAMICS S120M hybrid cable. Additionally, the slip ring can be configured to provide additional power and signal connections as the specific application may require.

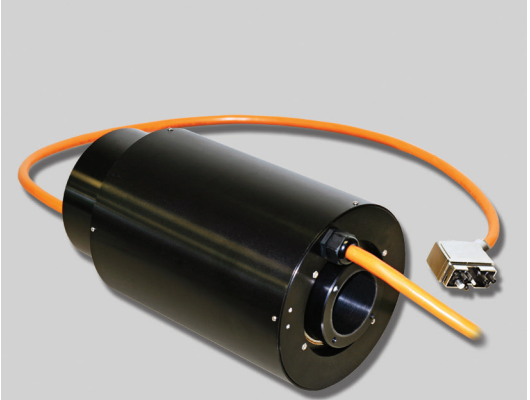
The AC7257 utilizes Moog's unique fiber brush technology for long life, no maintenance operation. The unit has been tested and verified compatible with the SINAMICS S120M decentralized servo system, logging over 100,000 rotations with no loss of information. The ring and brush contacts can operate in excess of 100,000,000 rotations.

#### Features

- Compatible with Siemens® DRIVE-CLiQ protocol
- Speeds up to 1000 rpm continuous
- Cable lengths as required
- In addition to the S120M hybrid cable, additional signal and power connections are available
- Sealing to dust and light fluid splash
- IP65 available
- Stainless steel housing available

#### Benefits

- Plug-and-play Siemens® DRIVE-CLiQ
- Through-bore for flexibility in mounting or routing of fluid and / or air lines



#### Typical Applications

- Packaging systems
- Machine tools
- Work centers

#### Americas

1213 North Main Street  
Blacksburg, VA 24060  
United States

Tel: +1 540-552-3011  
Fax: +1 540-557-6400

#### Asia-Pacific

Yokohama Nishiguchi KN Bldg. 10F  
2-8-4 Kitasaiwai, Nishi-ku  
Yokohama, Kanagawa 220-0004  
Japan

Tel: +81 45-328-1803  
Fax: +81 45-328-1801

#### Europe

30 Suttons Business Park  
Reading, Berkshire RG6 1AW  
United Kingdom

Tel: +44 (0) 118-966-6044  
Fax: +44 (0) 118-966-6524

# MOOG

[www.moog.com](http://www.moog.com)

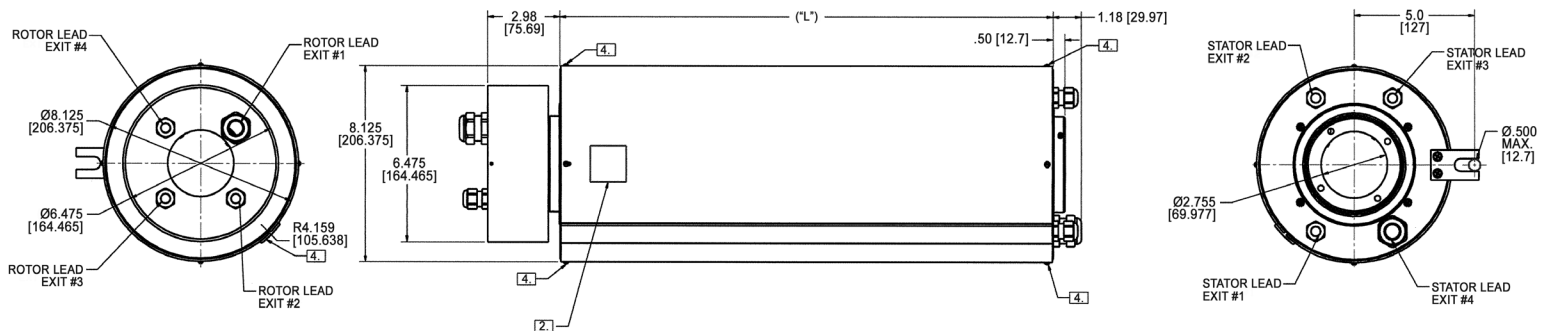
Email: [mcg@moog.com](mailto:mcg@moog.com)

# Ethernet Slip Ring Through-Bore

AC7257 Specifications		Options
Operating Speed	1000 rpm*	<ul style="list-style-type: none"> <li>• Longer lead lengths available</li> <li>• Various communication, signal and power combinations</li> <li>• Gold plated rings</li> <li>• Stainless steel housing</li> <li>• IP65 sealing</li> </ul>
Communication	DRIVE-CLiQ	
Voltage	24 VDC to 5 A, 720 VDC for 10 A, 30 A and 50 A	
Current Rating	5 to 50 amps	
Temperature Range	-40°C to +80°C	
Contact Material	Precious metal	
Circuit Options	Ethernet, signal, power	

\*Please note that the operational life of the unit is dependent upon rotational speed, environment and temperature.

## AC7257 Dimensions



Dimensions in inches [mm]

Part Number	Length "L"
AC7257-6	6.6 inch (167.64 mm)
AC7257-12	11.2 inch (284.48 mm)
AC7257-18	15.7 inch (398.78 mm)
AC7257-24	20.5 inch (520.7 mm)

Siemens, DRIVE-CLiQ and SINAMICS are registered trademarks of Siemens AG.

Specifications and information are subject to change without prior notice.  
 © 2014 Moog Inc. MS3122, rev. 1 08/18