

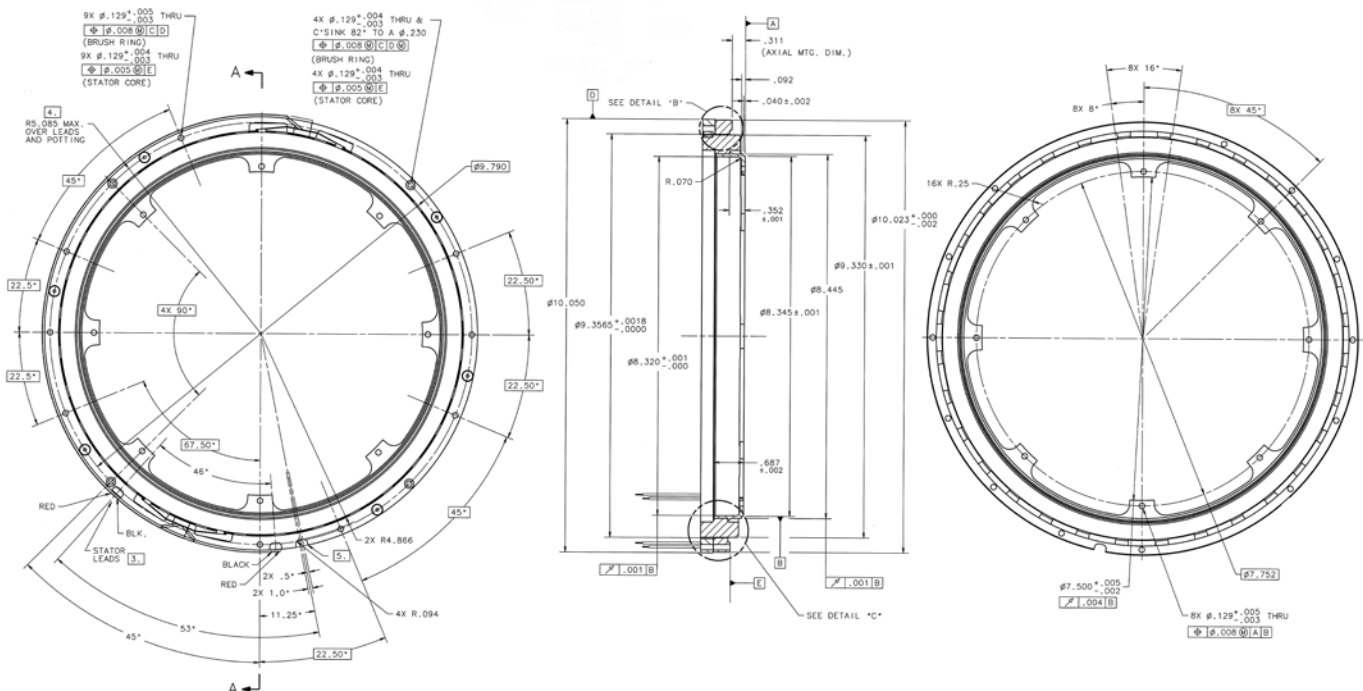
D-10020-C-1ANS Specifications

D-10020-C-1ANS SPECIFICATIONS @ 25°C

Brush Motors

Size Constants	Value	Units
Peak Torque, T_P	2222.3	oz-in
Motor Constant, K_M	98.31	oz-in/ \sqrt{W}
Number of Poles	32	
Weight	7.0	oz (max)
Motor Inertia, J_M	1.335E+00	oz-in-s ²
Friction Torque, T_F	50.00	oz-in
Electrical Time Constant, τ_E	0.443	ms
Mechanical Time Constant, τ_M	19.561	ms
Temperature Rise, Housed TPR ¹	1.96	°C/W
Ripple Torque, T_R	7	max. avg. to peak (%)
Winding Constants	Value	Units
Torque Sensitivity, K_T	156.5	lb-ft/amp
Back EMF, K_E	1.105	V per rad/s
Terminal Resistance, R_M	2.71	ohms (nom)
Terminal Inductance, L_M	1.200	mH (nom)
Voltage, Stalled at Peak Torque, V_P	38.5	volts
Amps at Peak Torque, I_P	14.20	amps

D-10020-C-1ANS Typical Outline Drawing



Dimensions are in inches