

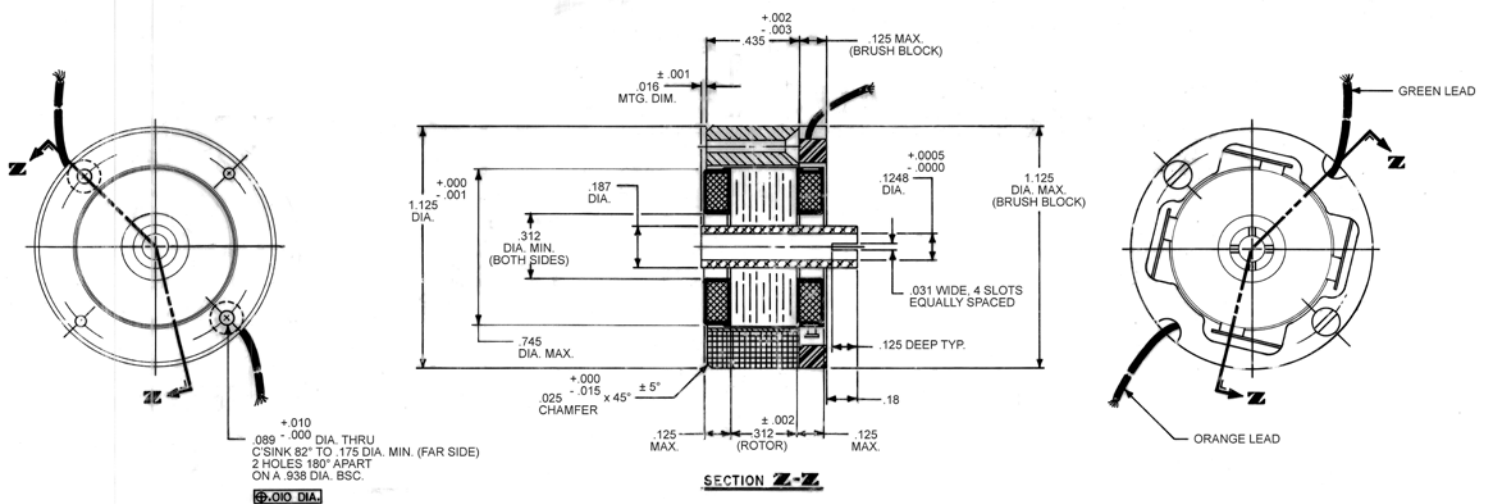
D-1125-N-1 Specifications

D-1125-N-1 SPECIFICATIONS @ 25°C

Size Constants	Value	Units
Peak Torque, T_P	6.6	oz-in
Motor Constant, K_M	0.899	oz-in/ \sqrt{W}
Number of Poles	4	
Weight	1.8	oz (nom)
Motor Inertia, J_M	1.50E-04	oz-in-s ²
Friction Torque, T_F	0.20	oz-in
Electrical Time Constant, τ_E	0.216	ms
Mechanical Time Constant, τ_M	26.24	ms
Temperature Rise, Housed TPR ¹	33	° C/W
Ripple Torque, T_R	7	max. avg. to peak (%)
Winding Constants	Value	Units
Torque Sensitivity, K_T	4.10	oz-in/amp
Back EMF, K_E	0.029	V per rad/s
Terminal Resistance, R_M	20.8	ohms (nom)
Terminal Inductance, L_M	4.5	mH (nom)
Voltage, Stalled at Peak Torque, V_P	33.3	volts
Amps at Peak Torque, I_P	1.60	amps

Brush Motors

D-1125-N-1 Typical Outline Drawing



Dimensions are in inches