

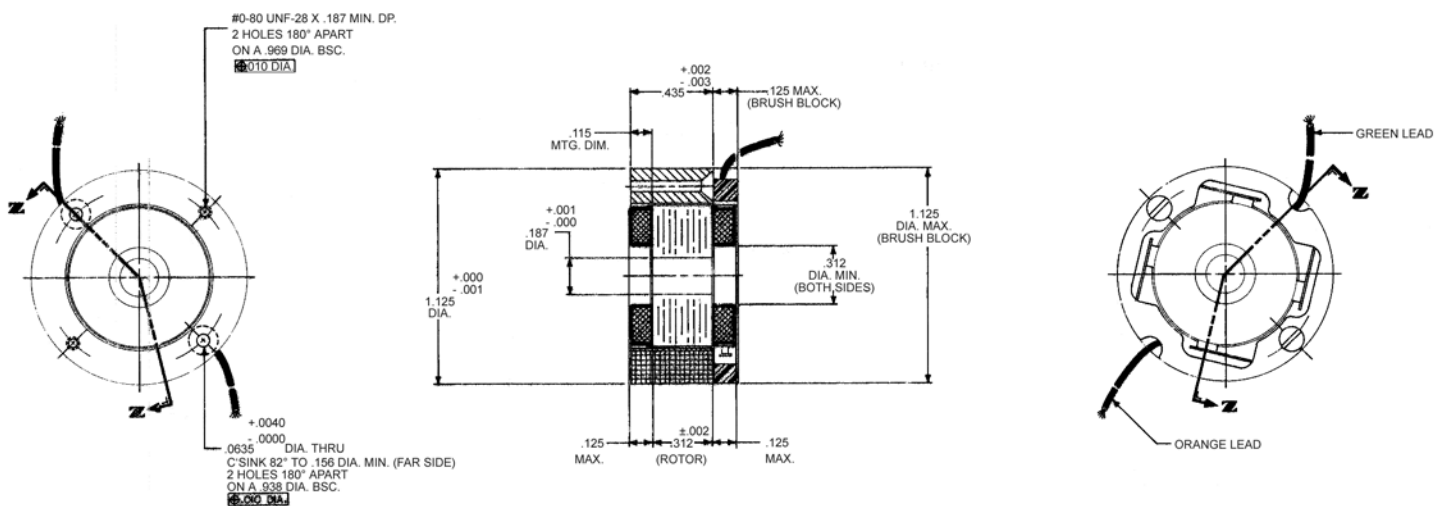
# D-1125-P-10 Specifications

## D-1125-P-10 SPECIFICATIONS @ 25°C

Size Constants	Value	Units
Peak Torque, $T_P$	6.6	oz-in
Motor Constant, $K_M$	0.87	oz-in/ $\sqrt{W}$
Number of Poles	4	
Weight	1.8	oz (nom)
Motor Inertia, $J_M$	1.50E-04	oz-in-s <sup>2</sup>
Friction Torque, $T_F$	0.20	oz-in
Electrical Time Constant, $\tau_E$	0.246	ms
Mechanical Time Constant, $\tau_M$	28.4	ms
Temperature Rise, Housed TPR'	34	° C/W
Ripple Torque, $T_R$	7	max. avg. to peak (%)
Winding Constants	Value	Units
Torque Sensitivity, $K_T$	3.12	oz-in/amp
Back EMF, $K_E$	0.022	V per rad/s
Terminal Resistance, $R_M$	13	ohms (nom)
Terminal Inductance, $L_M$	3.2	mH (nom)
Voltage, Stalled at Peak Torque, $V_P$	27.6	volts
Amps at Peak Torque, $I_P$	2.12	amps

Brush Motors

### D-1125-P-10 Typical Outline Drawing



Dimensions are in inches