

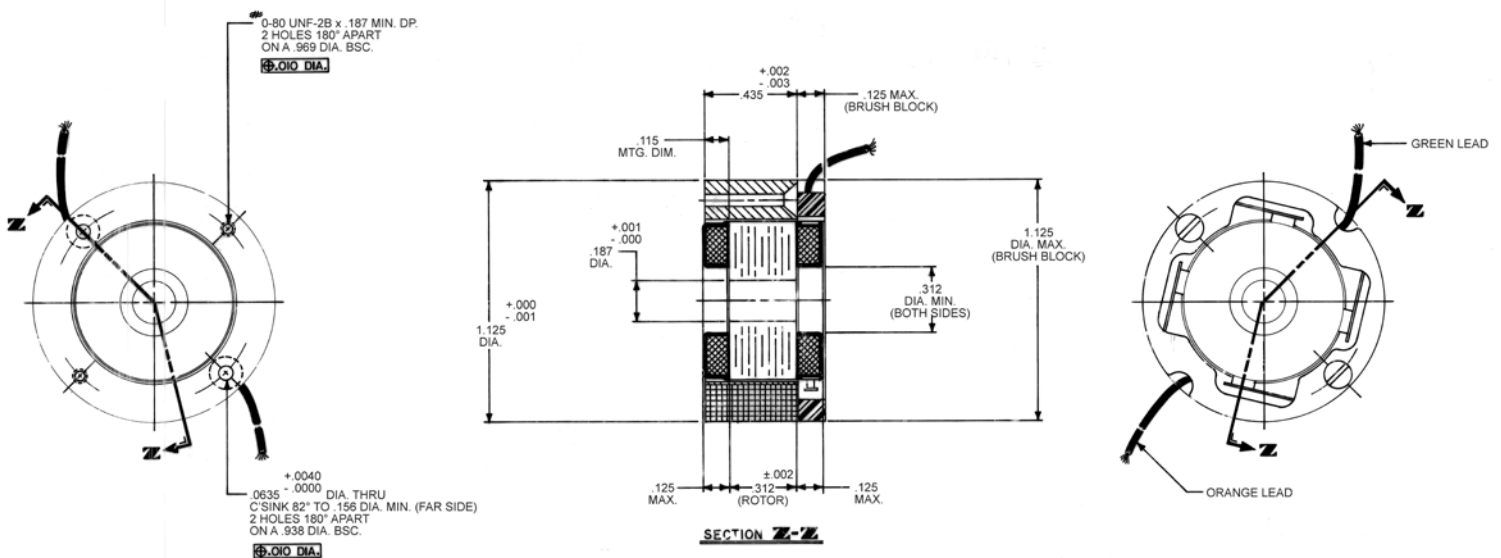
D-1125-P-7 / K044 Specifications

D-1125-P-7 / K044 SPECIFICATIONS @ 25°C

Size Constants	Value	Units
Peak Torque, T_P	6.6	oz-in
Motor Constant, K_M	0.851	oz-in/ \sqrt{W}
Number of Poles	4	
Weight	1.8	oz (nom)
Motor Inertia, J_M	1.50E-04	oz-in-s ²
Friction Torque, T_F	0.20	oz-in
Electrical Time Constant, τ_E	0.231	ms
Mechanical Time Constant, τ_M	29.26	ms
Temperature Rise, Housed TPR'	34	° C/W
Ripple Torque, T_R	7	max. avg. to peak (%)
Winding Constants	Value	Units
Torque Sensitivity, K_T	4.95	oz-in/amp
Back EMF, K_E	0.035	V per rad/s
Terminal Resistance, R_M	33.8	ohms (nom)
Terminal Inductance, L_M	7.8	mH (nom)
Voltage, Stalled at Peak Torque, V_P	45.0	volts
Amps at Peak Torque, I_P	1.33	amps

Brush Motors

D-1125-P-7 / K044 Typical Outline Drawing



Dimensions are in inches