

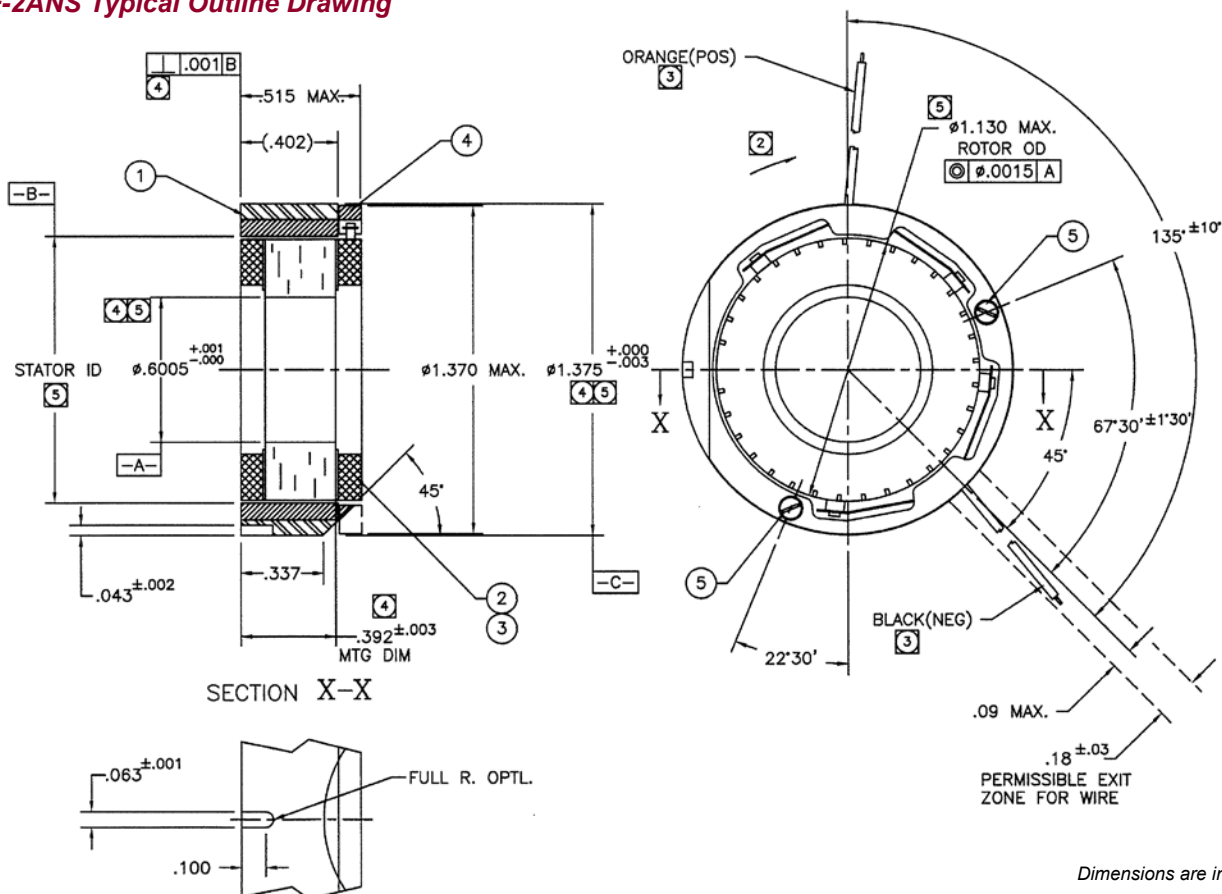
# D-1375-F-2ANS Specifications

## D-1375-F-2ANS SPECIFICATIONS @ 25°C

Size Constants	Value	Units
Peak Torque, $T_P$	43	oz-in
Motor Constant, $K_M$	2.70	oz-in/ $\sqrt{W}$
Number of Poles	8	
Weight	2.4	oz (nom)
Motor Inertia, $J_M$	5.35E-04	oz-in-s <sup>2</sup>
Friction Torque, $T_F$	0.88	oz-in
Electrical Time Constant, $\tau_E$	0.172	ms
Mechanical Time Constant, $\tau_M$	10.24	ms
Temperature Rise, Housed TPR'	17	° C/W
Ripple Torque, $T_R$	6	max. avg. to peak (%)
Winding Constants	Value	Units
Torque Sensitivity, $K_T$	5.05	oz-in/amp
Back EMF, $K_E$	0.036	V per rad/s
Terminal Resistance, $R_M$	3.48	ohms (nom)
Terminal Inductance, $L_M$	0.60	mH (nom)
Voltage, Stalled at Peak Torque, $V_P$	30.0	volts
Amps at Peak Torque, $I_P$	8.62	amps

Brush Motors

### D-1375-F-2ANS Typical Outline Drawing



Dimensions are in inches