

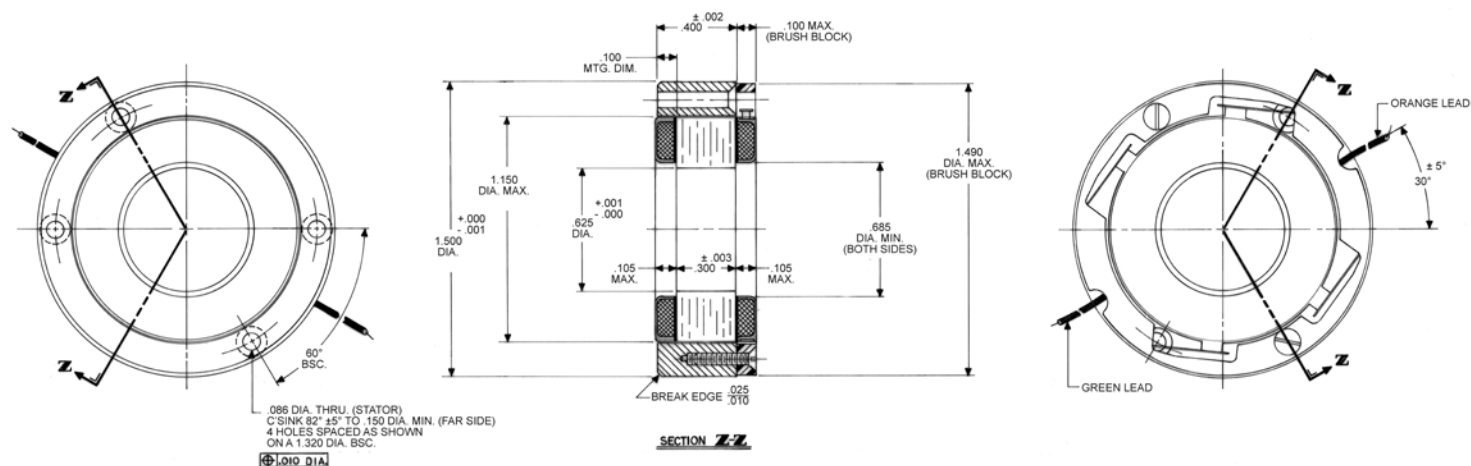
D-1500-C-3 Specifications

D-1500-C-3 SPECIFICATIONS @ 25°C

Size Constants	Value	Units
Peak Torque, T_p	15	oz-in
Motor Constant, K_M	1.78	oz-in/ \sqrt{W}
Number of Poles	6	
Weight	2.4	oz (nom)
Motor Inertia, J_M	5.50E-04	oz-in-s ²
Friction Torque, T_F	0.50	oz-in
Electrical Time Constant, τ_E	0.368	ms
Mechanical Time Constant, τ_M	24.36	ms
Temperature Rise, Housed TPR'	19	° C/W
Ripple Torque, T_R	7	max. avg. to peak (%)
Winding Constants	Value	Units
Torque Sensitivity, K_T	5.50	oz-in/amp
Back EMF, K_E	0.039	V per rad/s
Terminal Resistance, R_M	9.5	ohms (nom)
Terminal Inductance, L_M	3.5	mH (nom)
Voltage, Stalled at Peak Torque, V_p	25.9	volts
Amps at Peak Torque, I_p	2.73	amps

Brush Motors

D-1500-C-3 Typical Outline Drawing



Dimensions are in inches