

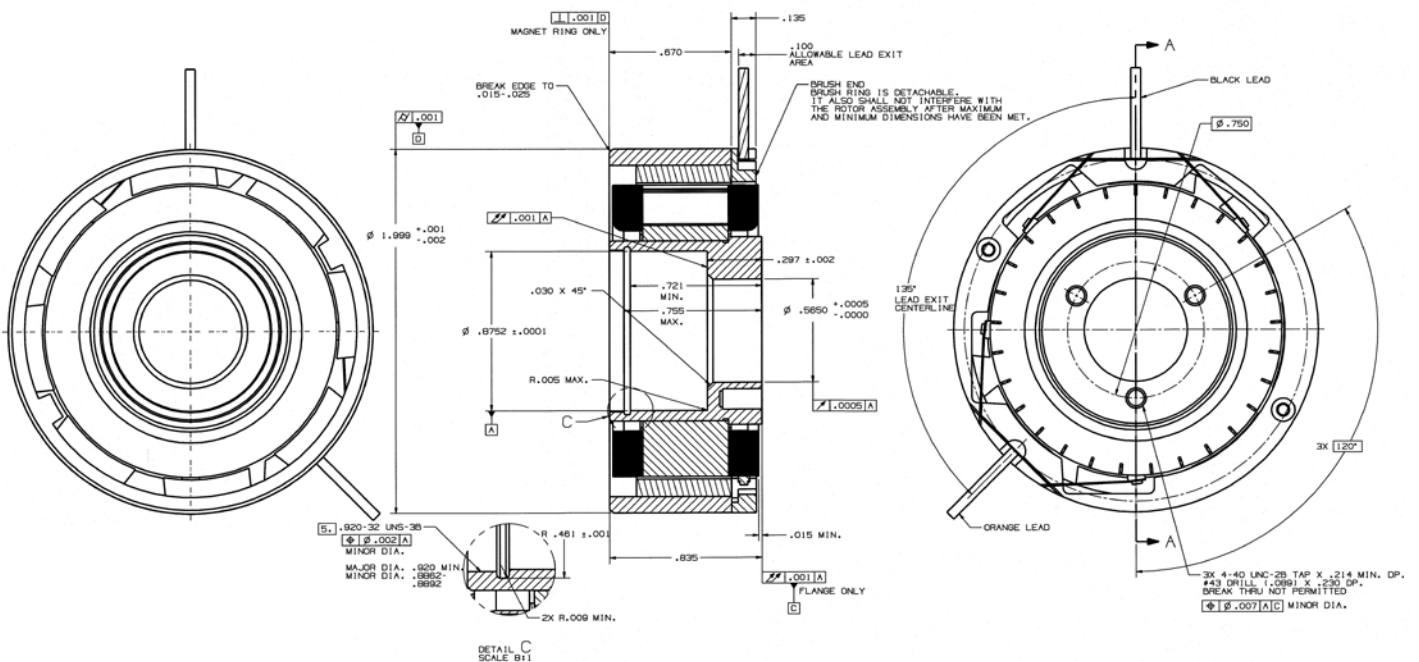
# D-2000-D-1NS Specifications

## D-2000-D-1NS SPECIFICATIONS @ 25°C

Size Constants	Value	Units
Peak Torque, $T_P$	108	oz-in
Motor Constant, $K_M$	8.06	oz-in/ $\sqrt{W}$
Number of Poles	8	
Weight	6.7	oz (nom)
Motor Inertia, $J_M$	3.25E-03	oz-in-s <sup>2</sup>
Friction Torque, $T_F$	6.0	oz-in
Electrical Time Constant, $\tau_E$	.032	ms
Mechanical Time Constant, $\tau_M$	7.08	ms
Temperature Rise, Housed TPR'	10	°C/W
Winding Constants	Value	Units
Torque Sensitivity, $K_T$	18.0	oz-in/amp
Back EMF, $K_E$	0.127	V per rad/s
Terminal Resistance, $R_M$	4.99	ohms (nom)
Terminal Inductance, $L_M$	1.6	mH (nom)
Voltage, Stalled at Peak Torque, $V_P$	29.9	volts
Amps at Peak Torque, $I_P$	6.00	amps

Brush Motors

### D-2000-D-1NS Typical Outline Drawing



Dimensions are in inches