

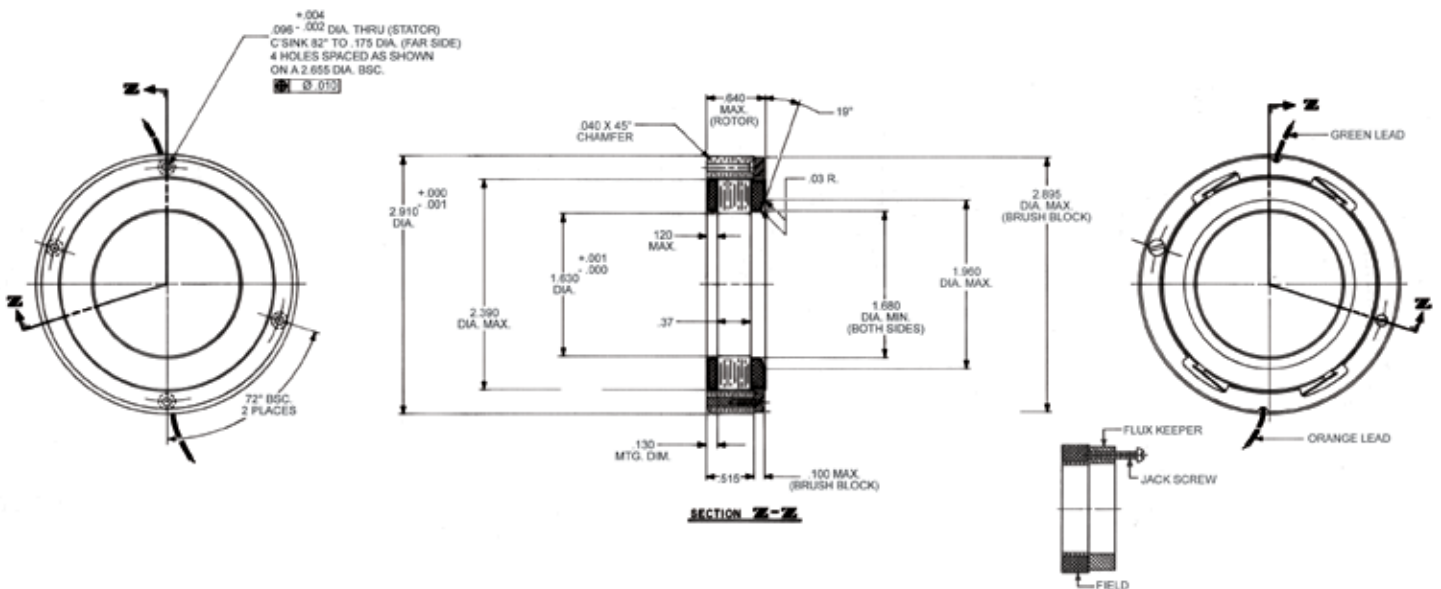
D-2910-B-1ENS Specifications

D-2910-B-1ENS SPECIFICATIONS @ 25°C

Size Constants	Value	Units
Peak Torque, T_P	165	oz-in
Motor Constant, K_M	10.2	oz-in/ \sqrt{W}
Number of Poles	10	
Weight	9.5	oz (nom)
Motor Inertia, J_M	1.25E-02	oz-in-s ²
Friction Torque, T_F	3	oz-in
Electrical Time Constant, τ_E	0.319	ms
Mechanical Time Constant, τ_M	16.84	ms
Temperature Rise, Housed TPR ¹	7.5	° C/W
Ripple Torque, T_R	7	max. avg. to peak (%)
Winding Constants	Value	Units
Torque Sensitivity, K_T	16.5	oz-in/amp
Back EMF, K_E	0.117	V per rad/s
Terminal Resistance, R_M	2.6	ohms (nom)
Terminal Inductance, L_M	0.83	mH (nom)
Voltage, Stalled at Peak Torque, V_P	26	volts
Amps at Peak Torque, I_P	10	amps

Brush Motors

D-2910-B-1ENS Typical Outline Drawing



Dimensions are in inches