

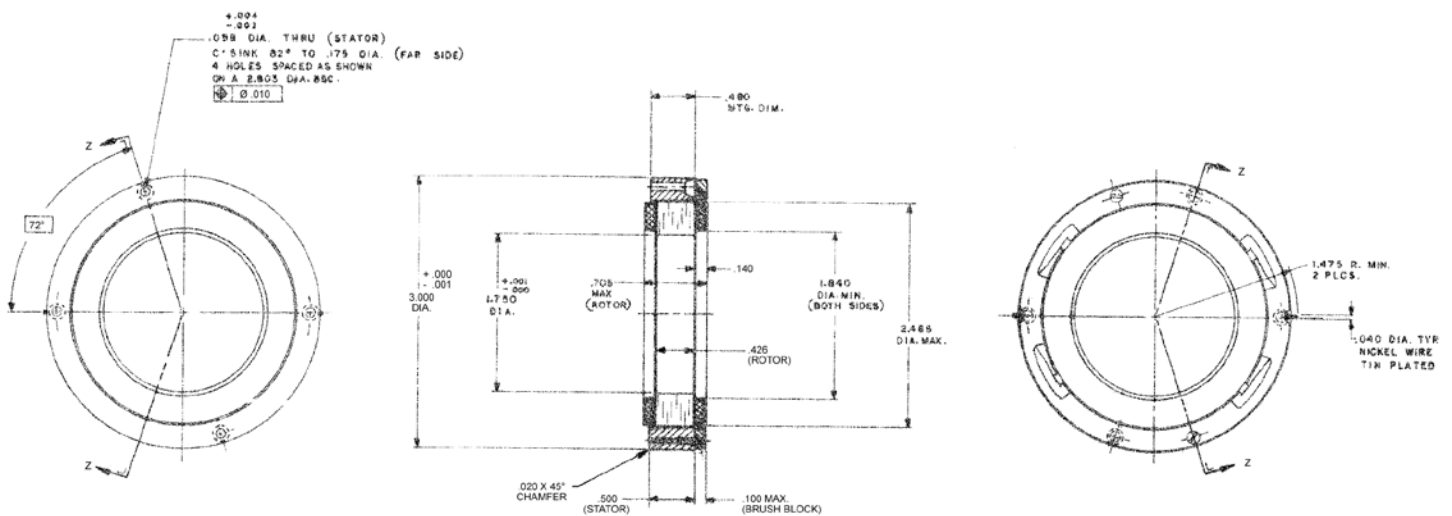
D-3000-F-1T Specifications

D-3000-F-1T SPECIFICATIONS @ 25°C

Size Constants	Value	Units
Peak Torque, T_P	93	oz-in
Motor Constant, K_M	12.2	oz-in/ \sqrt{W}
Number of Poles	10	
Weight	9.7	oz (nom)
Motor Inertia, J_M	1.60E-02	oz-in-s ²
Friction Torque, T_F	2.5	oz-in
Electrical Time Constant, τ_E	0.615	ms
Mechanical Time Constant, τ_M	15.32	ms
Temperature Rise, Housed TPR'	6.5	° C/W
Ripple Torque, T_R	5	max. avg. to peak (%)
Winding Constants	Value	Units
Torque Sensitivity, K_T	62	oz-in/amp
Back EMF, K_E	0.438	V per rad/s
Terminal Resistance, R_M	26	ohms (nom)
Terminal Inductance, L_M	16	mH (nom)
Voltage, Stalled at Peak Torque, V_P	39	volts
Amps at Peak Torque, I_P	1.5	amps

Brush Motors

D-3000-F-1T Typical Outline Drawing



Dimensions are in inches