

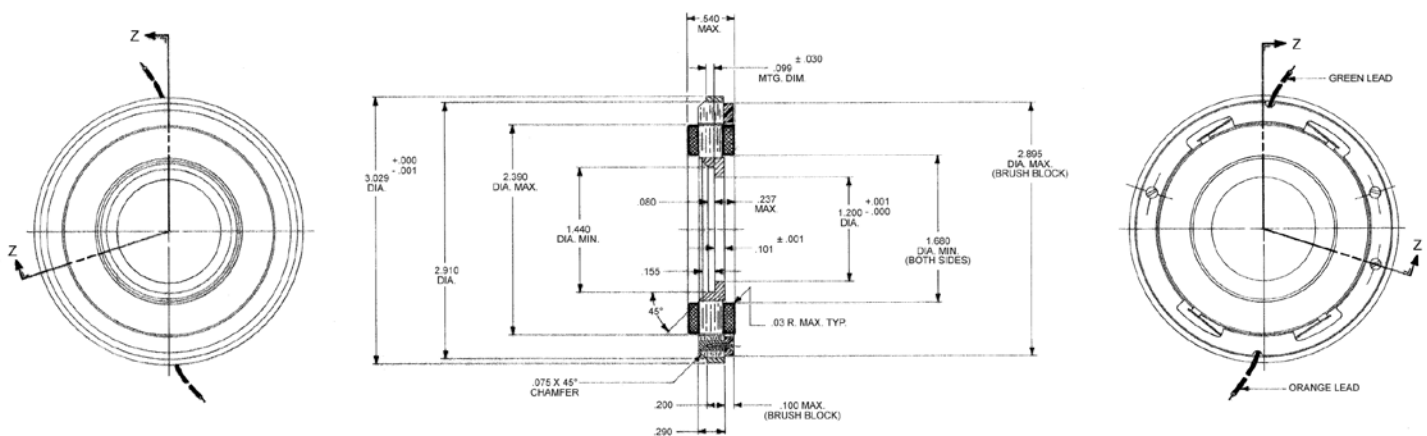
D-3029-A-2EN Specifications

D-3029-A-2EN SPECIFICATIONS @ 25°C

Size Constants	Value	Units
Peak Torque, T_P	37	oz-in
Motor Constant, K_M	7.85	oz-in/ \sqrt{W}
Number of Poles	10	
Weight	6.5	oz (nom)
Motor Inertia, J_M	1.24E-02	oz-in-s ²
Friction Torque, T_F	1	oz-in
Electrical Time Constant, τ_E	0.50	ms
Mechanical Time Constant, τ_M	28.46	ms
Temperature Rise, Housed TPR ¹	8.0	° C/W
Ripple Torque, T_R	5	max. avg. to peak (%)
Winding Constants	Value	Units
Torque Sensitivity, K_T	43	oz-in/amp
Back EMF, K_E	0.304	V per rad/s
Terminal Resistance, R_M	30	ohms (nom)
Terminal Inductance, L_M	15	mH (nom)
Voltage, Stalled at Peak Torque, V_P	26	volts
Amps at Peak Torque, I_P	0.87	amps

Brush Motors

D-3029-A-2EN Typical Outline Drawing



Dimensions are in inches