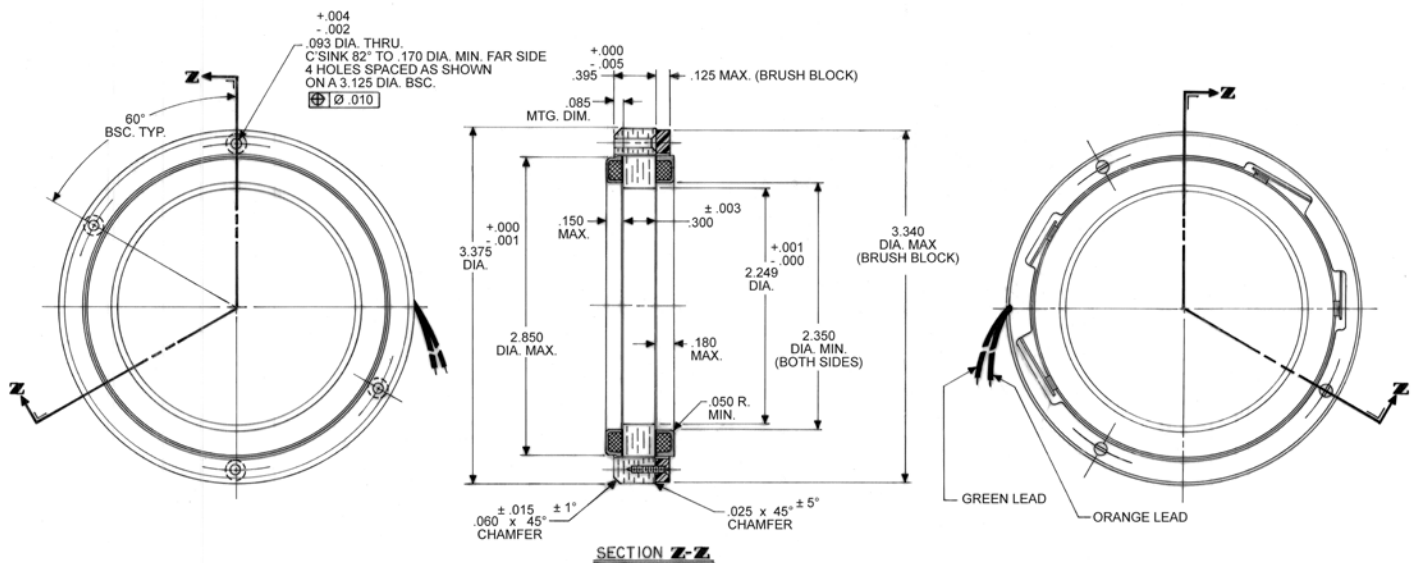


D-3375-A-2 SPECIFICATIONS @ 25°C

Size Constants	Value	Units
Peak Torque, T_P	58	oz-in
Motor Constant, K_M	10	oz-in/ \sqrt{W}
Number of Poles	12	
Weight	8.5	oz (nom)
Motor Inertia, J_M	1.63E-02	oz-in-s ²
Friction Torque, T_F	2	oz-in
Electrical Time Constant, τ_E	0.243	ms
Mechanical Time Constant, τ_M	22.46	ms
Temperature Rise, Housed TPR ¹	6.2	° C/W
Ripple Torque, T_R	7	max. avg. to peak (%)
Winding Constants	Value	Units
Torque Sensitivity, K_T	46	75oz-in/amp
Back EMF, K_E	0.325	V per rad/s
Terminal Resistance, R_M	20.6	ohms (nom)
Terminal Inductance, L_M	5	mH (nom)
Voltage, Stalled at Peak Torque, V_P	26	volts
Amps at Peak Torque, I_P	1.26	amps

D-3375-A-2 Typical Outline Drawing



Dimensions are in inches