

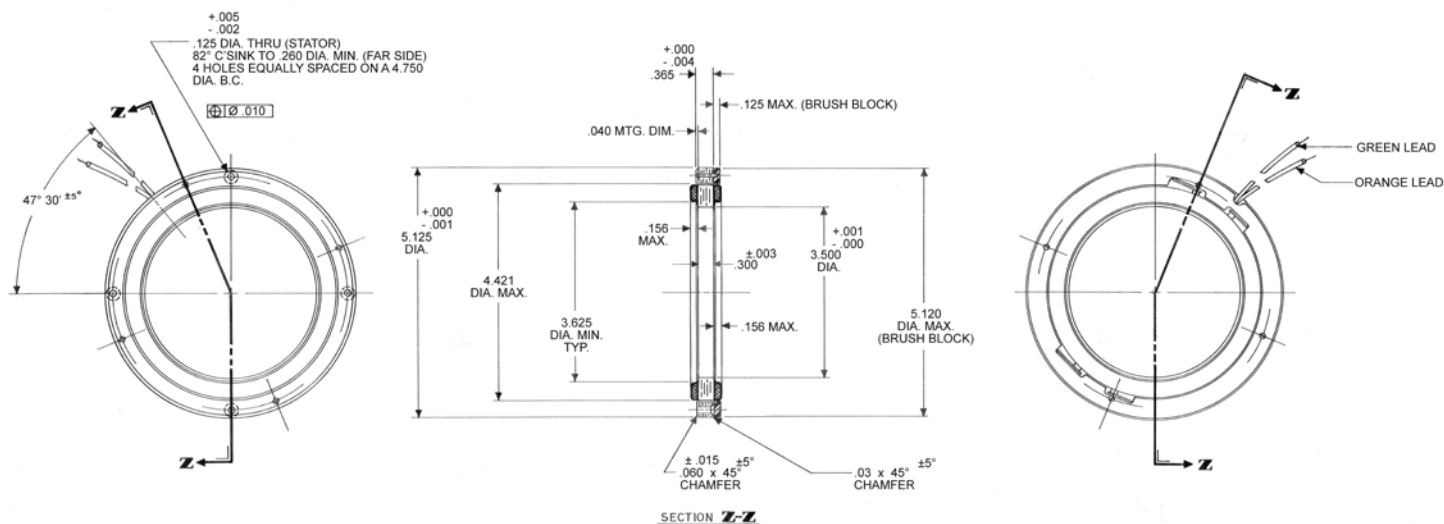
# D-5125-C-3 Specifications

## D-5125-C-3 SPECIFICATIONS @ 25°C

Size Constants	Value	Units
Peak Torque, $T_P$	160	oz-in
Motor Constant, $K_M$	22.1	oz-in/ $\sqrt{W}$
Number of Poles	16	
Weight	19	oz (nom)
Motor Inertia, $J_M$	9.80E-02	oz-in-s <sup>2</sup>
Friction Torque, $T_F$	5	oz-in
Electrical Time Constant, $\tau_E$	0.447	ms
Mechanical Time Constant, $\tau_M$	28.31	ms
Temperature Rise, Housed TPR <sup>1</sup>	4.5	° C/W
Ripple Torque, $T_R$	5	max. avg. to peak (%)
Winding Constants	Value	Units
Torque Sensitivity, $K_T$	48	oz-in/amp
Back EMF, $K_E$	0.339	V per rad/s
Terminal Resistance, $R_M$	4.70	ohms (nom)
Terminal Inductance, $L_M$	2.1	mH (nom)
Voltage, Stalled at Peak Torque, $V_P$	15.7	volts
Amps at Peak Torque, $I_P$	3.33	amps

Brush Motors

### D-5125-C-3 Typical Outline Drawing



Dimensions are in inches